



- RCP KEY**
- Ceilings**
- Perforated metal ceiling raft SAS600
  - Access Panel
  - Soffit/Ceiling level AFFL
  - Batt Infill
- Lighting Fixtures**
- L1 Suspended Linear Luminaire (integrated PIR) - refer to Service Engineer
  - Surface mounted/suspended Cylindrical Luminaire - refer to Services Engineer
  - Recessed Single Luminaire - refer to Services Engineer
  - Pendant Feature Luminaire - refer to Services Engineer
  - Pendant Feature Luminaire - refer to Services Engineer
  - Wall Mounted Luminaire
  - Wall Mounted Back of House Luminaire
  - WM LED Strip Light - Refer to 8260 series
  - New spotlights track mounted
- Mechanical Equipment**
- Fan Coil Unit - refer to Services Engineer
  - Circular Swirl Diffuser - refer to Services Engineer
  - Impulse Diffuser above Raft Ceiling - refer to Services Engineer
  - Intake ducts - refer to Services Engineer
  - Extract ducts - refer to Services Engineer
- Electrical & Fire Safety Equipment**
- Presense detector - refer to Services Engineer
  - Emergency light - refer to Services Engineer
  - Smoke Detector - refer to Services Engineer
  - Smoke Detector with Sounder and Beacon - refer to Services Engineer
- Note:**  
All exposed MEP services should be sprayed to RAL TBC.  
Refer to MEP specification.



rev.	date	amendment

0 0.5M 1M 2.5M 5M  
SCALE: 1:50 @A1

**able partners**  
hello@ablepartners.co.uk

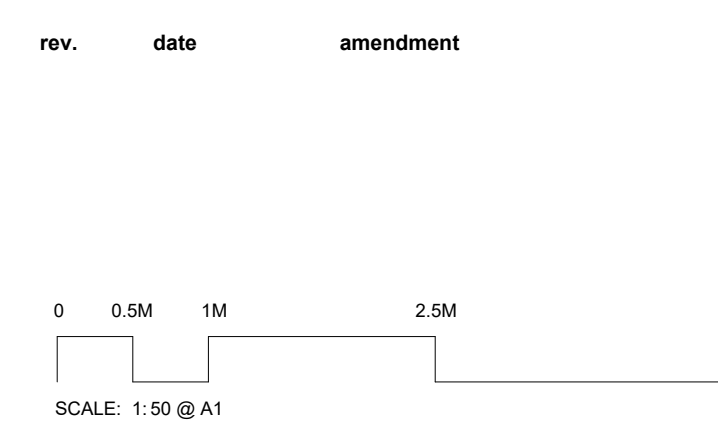
job title  
Tavistock House

drawing title  
L03 RCP A

scale	As Indicated	@A0
status	Project Status	job no. 1061
drawing no.	1061-0501	revision

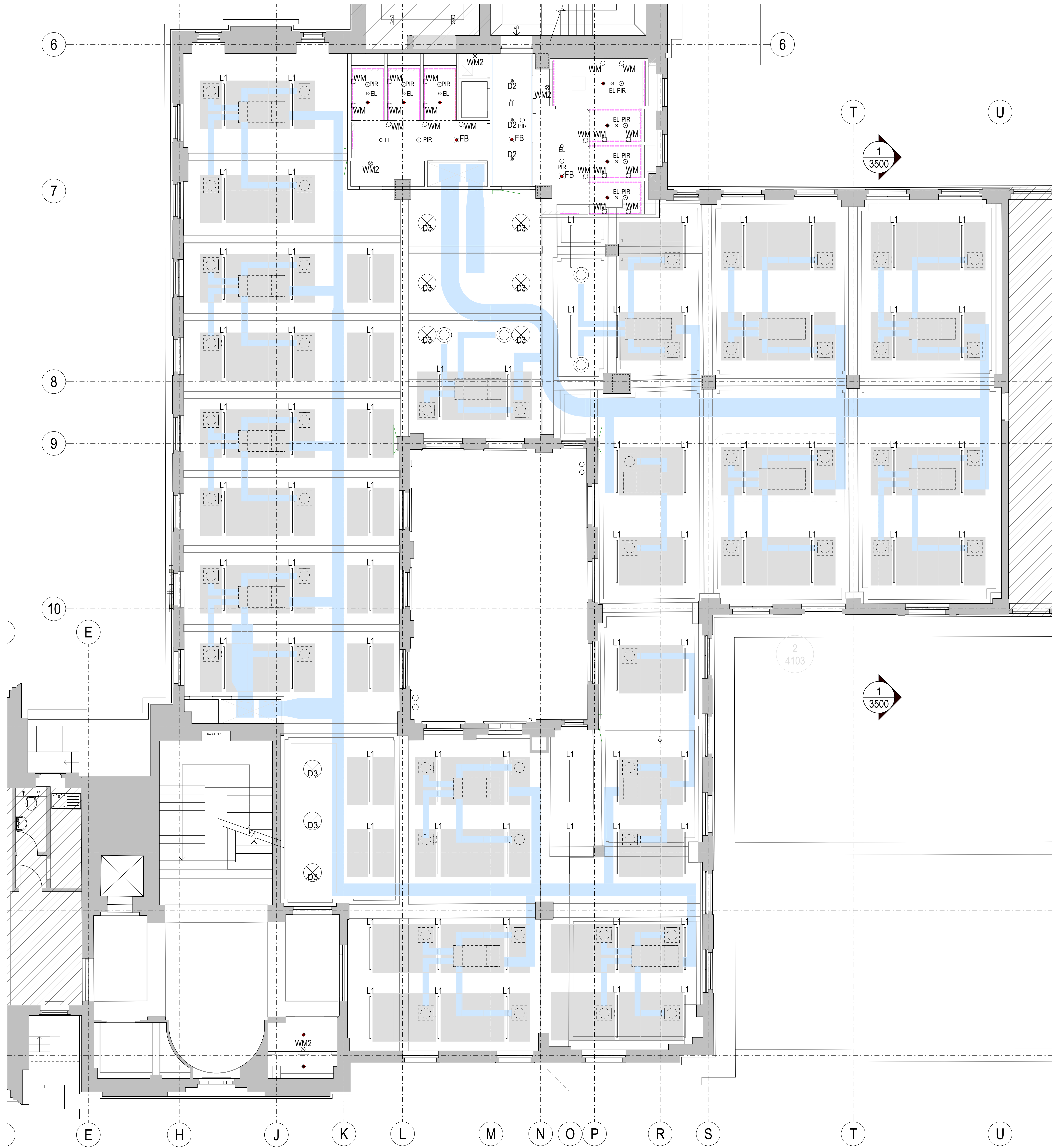


- RCP KEY**
- Ceilings**
- Perforated metal ceiling raft SAS600
  - Access Panel
  - Soffit/Ceiling level AFFL
  - Batt Infil
- Lighting Fixtures**
- Suspended Linear Luminaires (integrated PIR) - refer to Service Engineer
  - Surface mounted/suspended Cylindrical Luminaire - refer to Services Engineer
  - Recessed Single Luminaire - refer to Services Engineer
  - Pendant Feature Luminaire - refer to Services Engineer
  - Pendant Feature Luminaire - refer to Services Engineer
  - Wall Mounted Luminaire
  - Wall Mounted Back of House Luminaire
  - WM LED Strip Light - Refer to 8260 series
  - New spotlights track mounted
- Mechanical Equipment**
- Fan Coil Unit - refer to Services Engineer
  - Circular Swirl Diffuser - refer to Services Engineer
  - Impulse Diffuser above Raft Ceiling - refer to Services Engineer
  - Intake ducts - refer to Services Engineer
  - Extract ducts - refer to Services Engineer
- Electrical & Fire Safety Equipment**
- PIR Presense detector - refer to Services Engineer
  - EL Emergency light - refer to Services Engineer
  - Smoke Detector - refer to Services Engineer
  - Smoke Detector with Sounder and Beacon - refer to Services Engineer
- Note:**  
All exposed MEP services should be sprayed to RAL TBC.  
Refer to MEP specification.



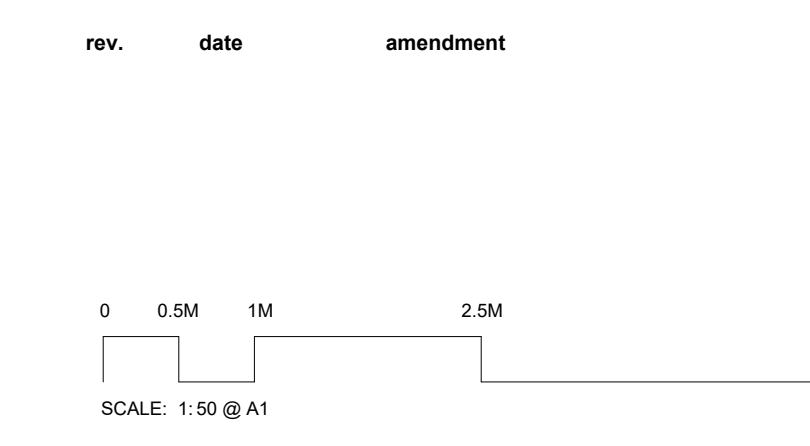
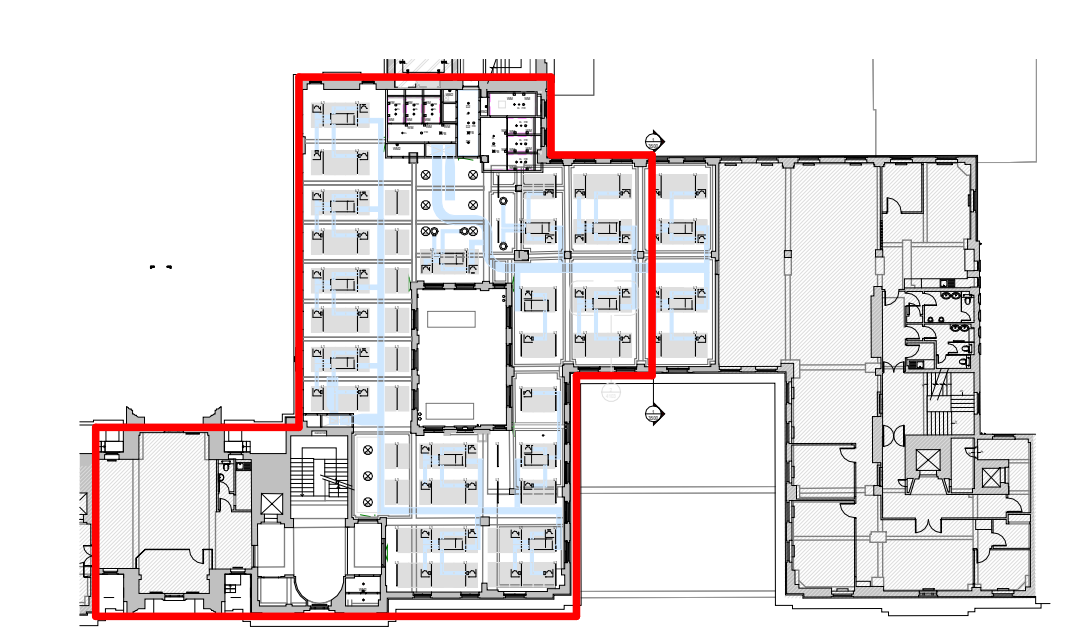
<b>able partners</b>	
hello@ablepartners.co.uk	
job title Tavistock House	
drawing title L03 RCP B	
scale As Indicated @A0	status Project Status
job no. 1061	revision
1061-0502	

1 L03 RCP B  
1:50



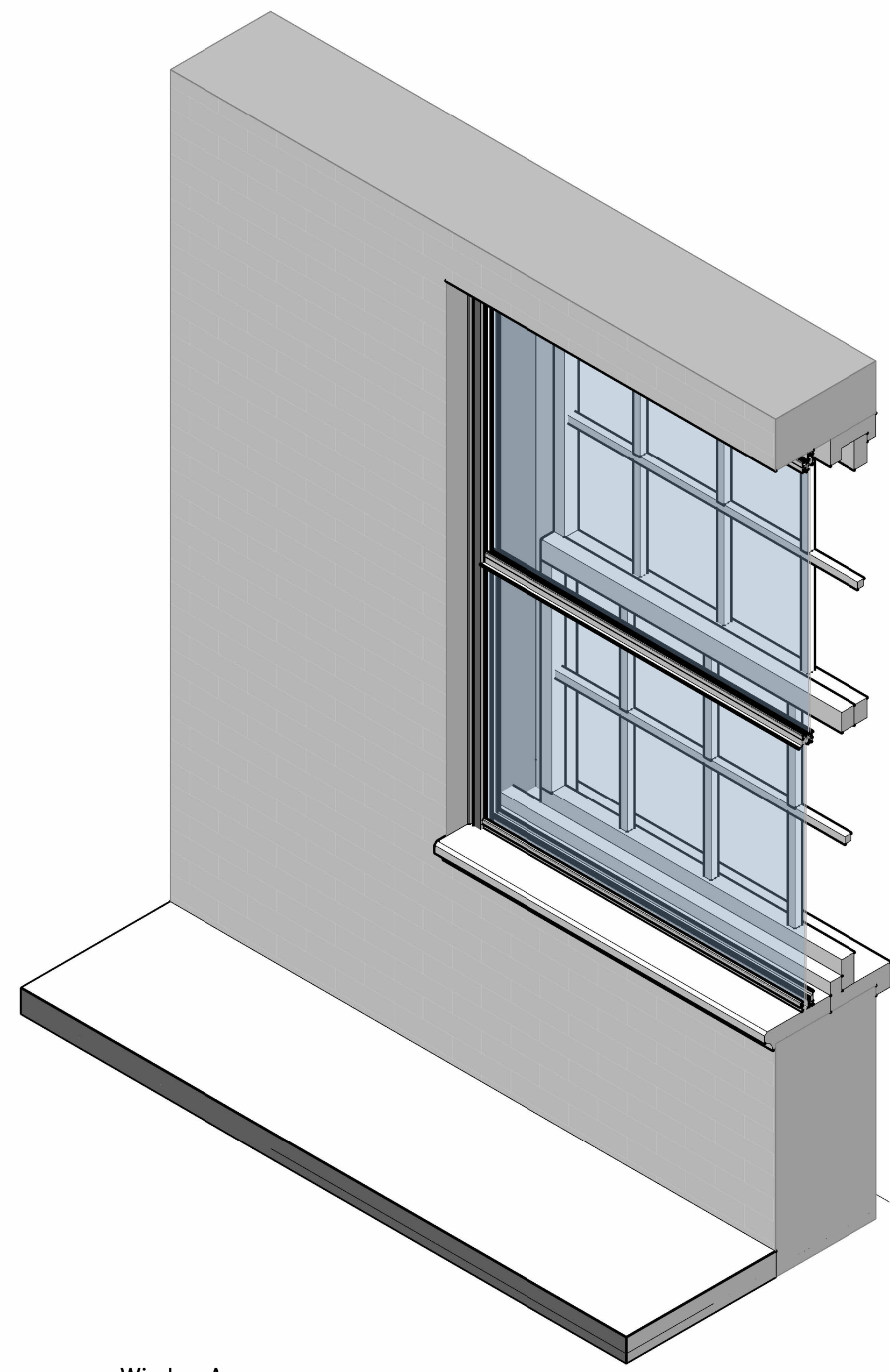
- RCP KEY**
- Ceilings**
- Perforated metal ceiling raft SAS600
  - Access Panel
  - Soffit/Ceiling level AFFL
  - Batt Infill
- Lighting Fixtures**
- Suspended Linear Luminaires (integrated PIR) - refer to Services Engineer
  - Surface mounted/suspended Cylindrical Luminaire - refer to Services Engineer
  - Recessed Single Luminaire - refer to Services Engineer
  - Pendant Feature Luminaire - refer to Services Engineer
  - Pendant Feature Luminaire - refer to Services Engineer
  - Wall Mounted Luminaire
  - Wall Mounted Back of House Luminaire
  - WM LED Strip Light - Refer to 8260 series
  - New spotlights track mounted
- Mechanical Equipment**
- Fan Coil Unit - refer to Services Engineer
  - Circular Swirl Diffuser - refer to Services Engineer
  - Impulse Diffuser above Raft Ceiling - refer to Services Engineer
  - Intake ducts - refer to Services Engineer
  - Extract ducts - refer to Services Engineer
- Electrical & Fire Safety Equipment**
- Presence detector - refer to Services Engineer
  - Emergency light - refer to Services Engineer
  - Smoke Detector - refer to Services Engineer
  - Smoke Detector with Sounder and Beacon - refer to Services Engineer
- Note:**  
All exposed MEP services should be sprayed to RAL TBC.  
Refer to MEP specification.

**RCP KEY**  
1:100

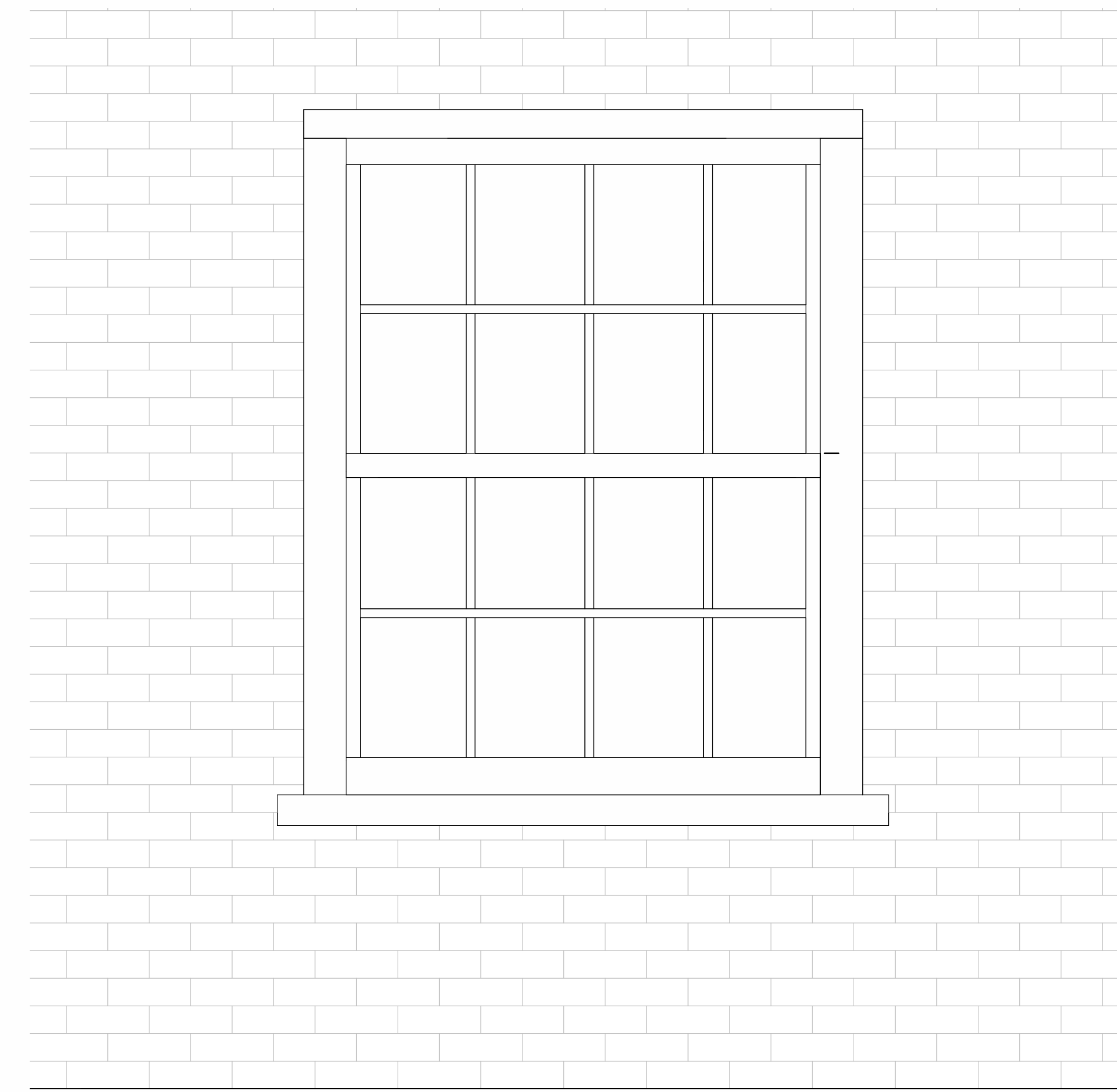


<b>able partners</b>	
hello@ablepartners.co.uk	
job title Tavistock House	
drawing title L04 RCP	
scale As Indicated @A0	status Project Status
drawing no. 1061-0503	revision

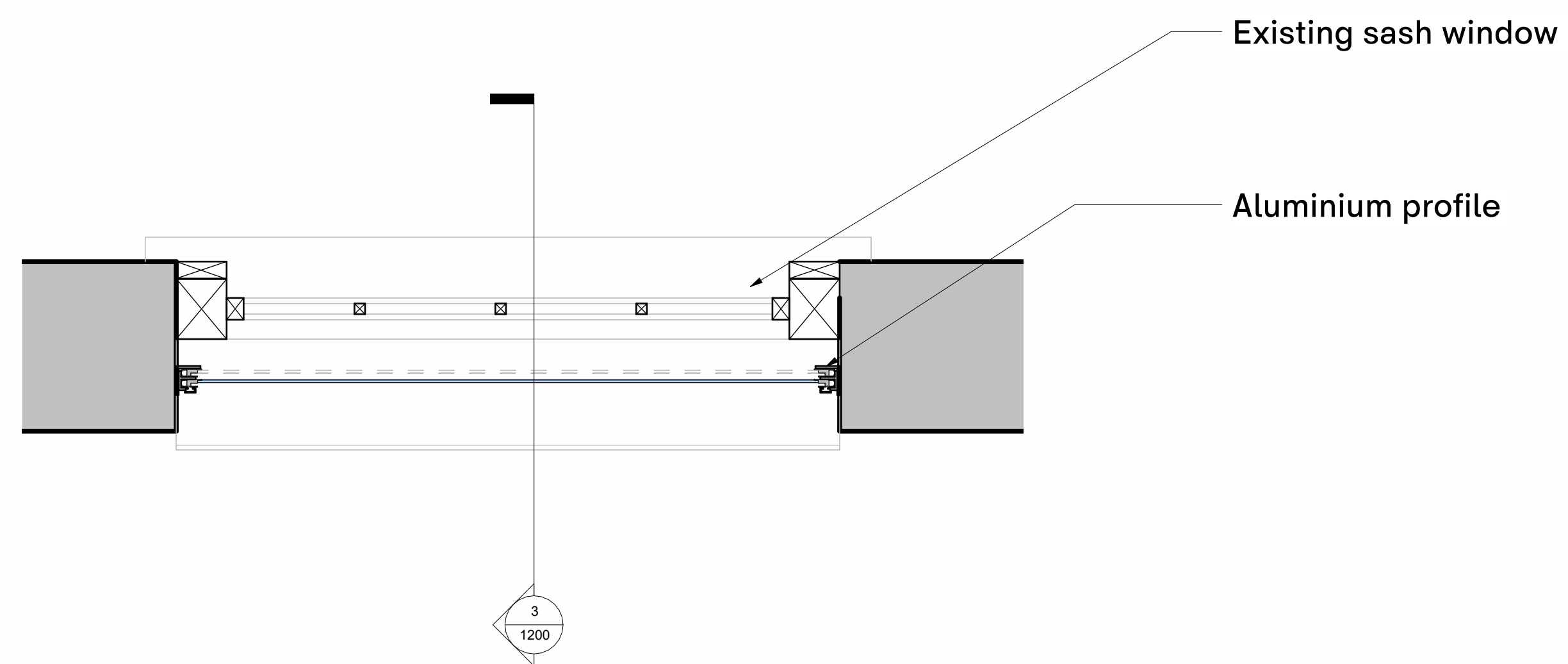
**L04 RCP A**  
1:50



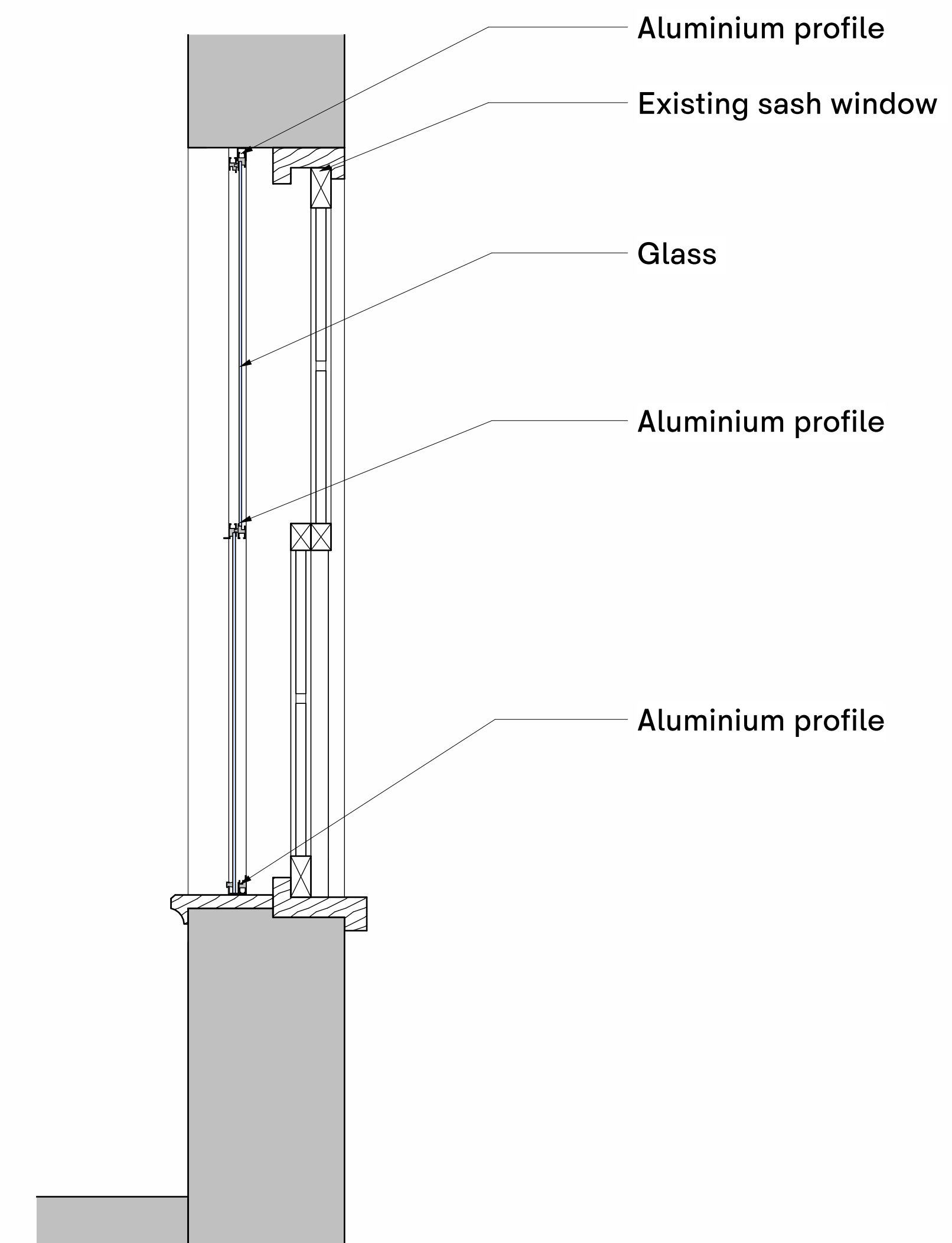
1 Window Axo



4 Window Elevation  
1:10

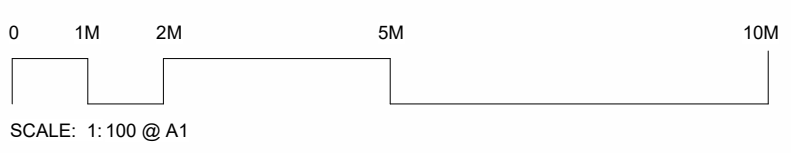


2 Window Plan  
1:10



3 Window Section  
1:10

rev. date amendment



**able partners**

hello@ablepartners.co.uk

job title  
Tavistock House

drawing title  
Secondary Window Details

scale	1:10	@A0
status	Project Status	job no. 1061
drawing no.		revision

1061-1200