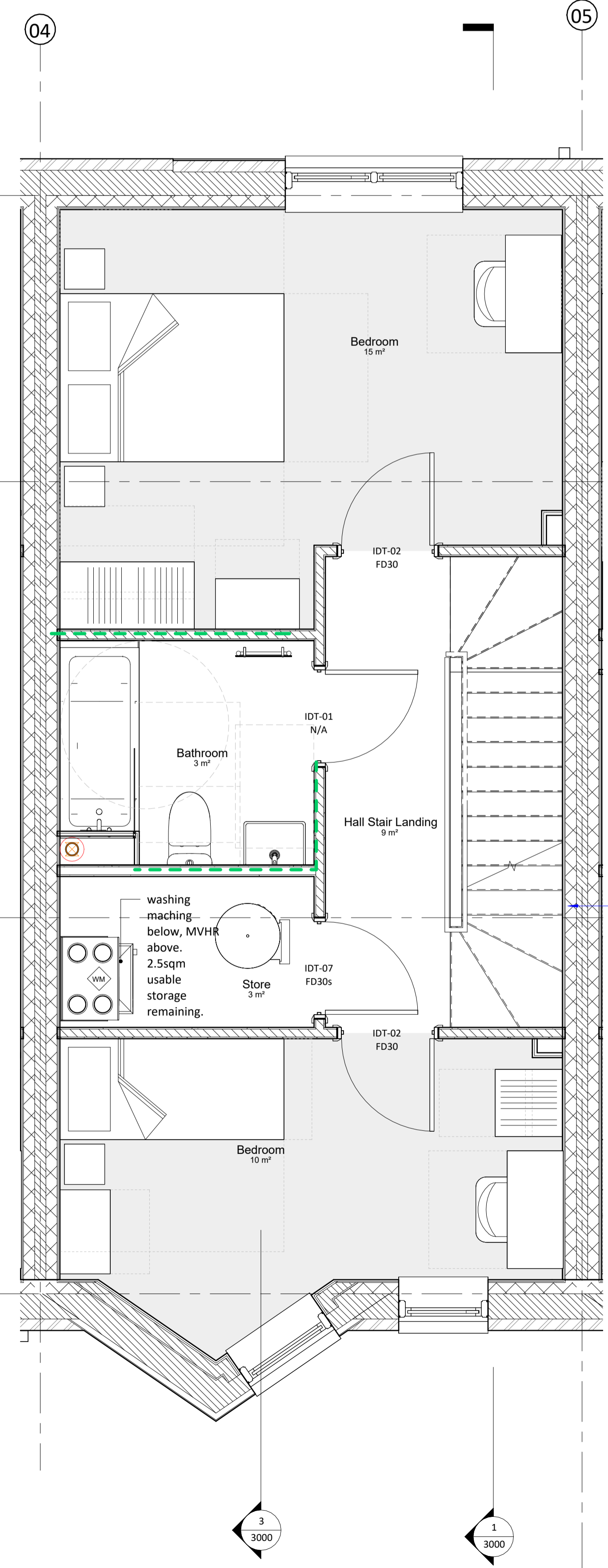
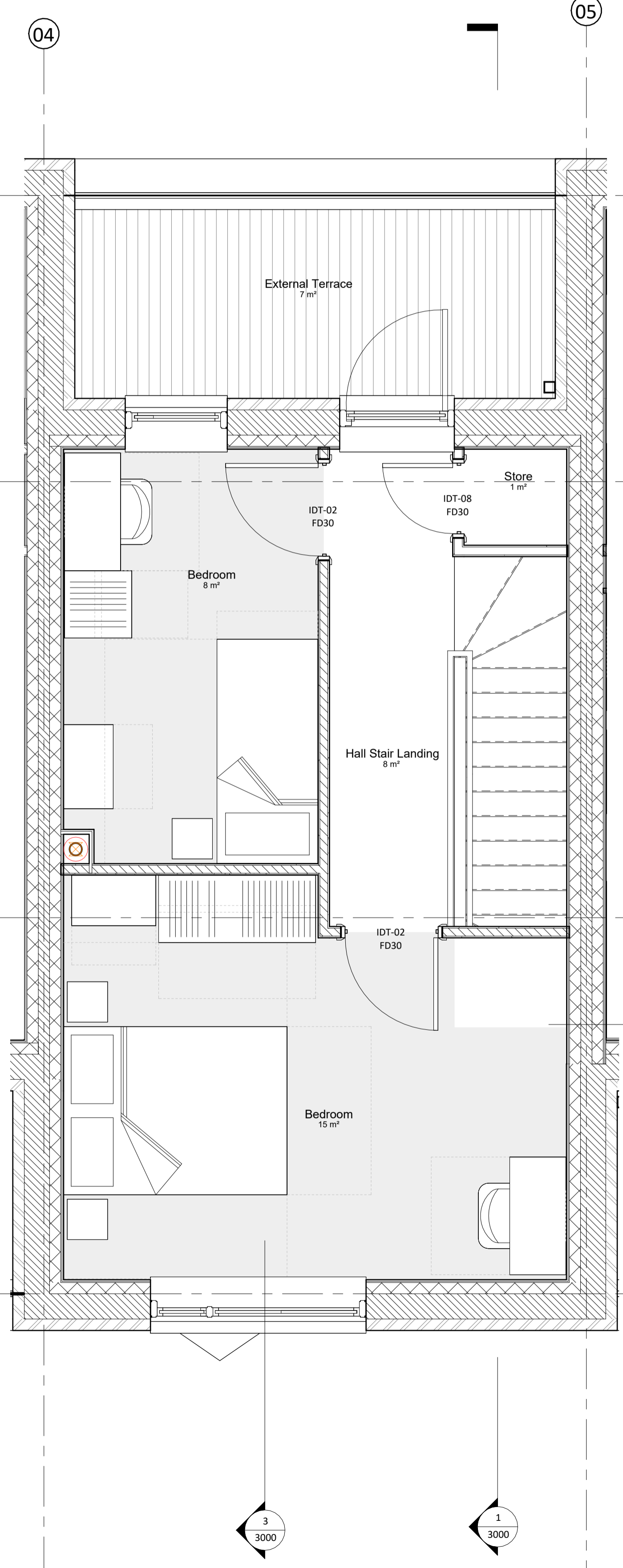


Provision made in the stair design and layout for future installation of stair lift to provide access to upper floors.



Provision made in the stair design and layout for future installation of stair lift to provide access to upper floors.



NOTES

- Localised ply patressing within a minimum height band of 300-1800mm AFFL in bathrooms and kitchens.

UNIT SHOWN: 2
APPLIES TO UNITS: 2,4,6,8,10
NOTE: Refer to GA Plans for window arrangement of Unit 10

Rev	Date	Description	By	CHK'd
P2.2	13/06/24	FOR COORDINATION	CSA	GC
P2.1	15/05/24	FOR COORDINATION	CSA	GC
P2	28/09/24	FOR INFORMATION	CSA	GC
P1	20/09/24	FOR INFORMATION	CSA	GC

Calypso Studios

tel: +44 (0) 7749974558
 email: info@calypso-studios.co.uk
 www.calypso-studios.co.uk

Client
Frencon Construction Limited

Project
GODWIN AND CROWDALE ESTATE
 Crowndale Road, London Borough of Camden

Title
UNIT TYPE LAYOUTS - UNIT 2
GENERAL ARRANGEMENTS

Date 28/03/2024 Scale 1:30@A1 Issuing Discipline ARCHITECTURE

Issue status

WORK IN PROGRESS

Project No 2965- CSA - ZZ - ZZ - DR - A - 4801 P2.2

Important note: