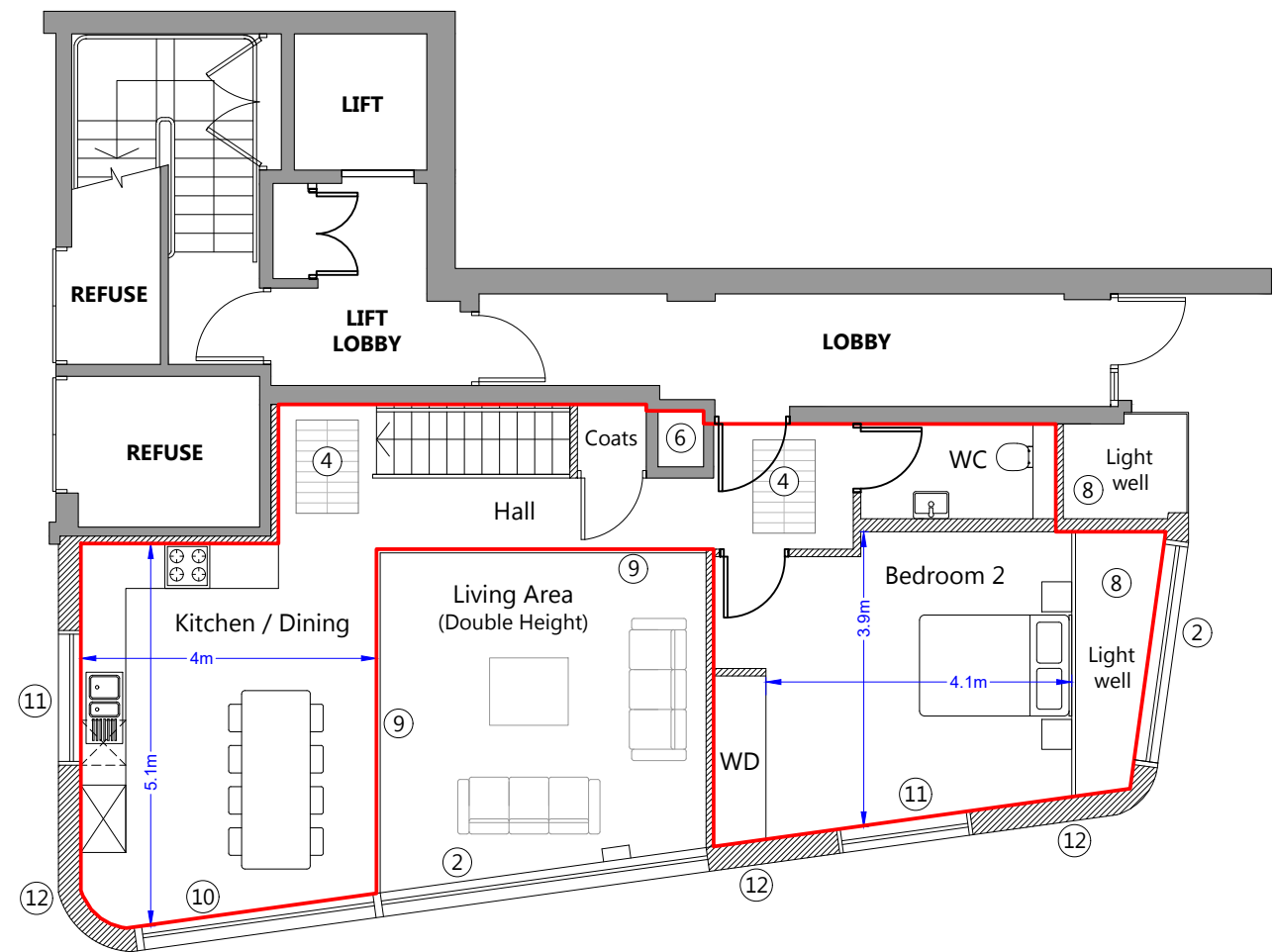


**PROPOSED LOWER GROUND FLOOR PLAN @ 1:100 SCALE**

Lower ground floor gross internal floor area = 123.4m<sup>2</sup>



**PROPOSED GROUND FLOOR PLAN @ 1:100 SCALE**

Ground floor gross internal floor area = 59.2m<sup>2</sup>

Revision B 24.06.24 R.A

-Internal modifications made due to daylight report.

Revision A 17.04.24 R.A

-Gross internal floor area shown.

Total floor gross internal floor area = 182.6m<sup>2</sup>

- ① LOW LEVEL CURTAIN WALL TYPE GLAZING TO BRING LIGHT INTO LOWER GROUND FLOOR LEVEL
- ② HIGH & LOW LEVEL CURTAIN WALL TYPE GLAZING TO BRING LIGHT INTO GROUND & LOWER GROUND FLOOR LEVEL
- ③ HIGH LEVEL GLAZING TO BRING BORROWED LIGHT INTO STUDY
- ④ NON SLIP GLAZED FLOOR PANELS TO BRING LIGHT INTO LOWER GROUND FLOOR LOBBY AREAS
- ⑤ ALTERNATIVE ESCAPE ROUTE
- ⑥ EXISTING EXTRACT DUCT
- ⑦ NEW STEEL BEAM REQUIRED WHERE WALL IS REMOVED
- ⑧ NEW LIGHT WELLS TO BRING LIGHT IN FROM GLAZING AT GROUND FLOOR LEVEL
- ⑨ NEW FRAMELESS GLASS BALUSTRADING
- ⑩ HIGH LEVEL CURTAIN WALL TYPE GLAZING TO BRING LIGHT INTO KITCHEN AT GROUND FLOOR LEVEL
- ⑪ NEW OPENABLE WINDOWS
- ⑫ NEW BRICKWORK CAVITY WALL

**GRAHAM ASH ARCHITECTS**  
 CHARTERED ARCHITECTS TOWN PLANNING CONSULTANTS  
 KINGFISHER STUDIO, 5 MALCOLM ROAD  
 CHANDLERS FORD, EASTLEIGH, HAMPSHIRE SO53 5BH  
 TELEPHONE 07768 453105  
 EMAIL: Info@grahamasharchitects.com  
 WEBSITE: www.grahamasharchitects.com

PROJECT:  
**59 MOUNT PLEASANT LONDON EC1R 0AE**

TITLE: **PROPOSED FLOOR PLANS (OPTION B)**

DESIGNED BY GA	DATE 22-10-21	DRWN / DTALD BY:
SCALE 1:100	PLOTTED 22-10-21	REV. B



PURPOSE OF ISSUE:  
 information  approval  tender  construction

DWG. NO.  
**21:011:04 Rev B**