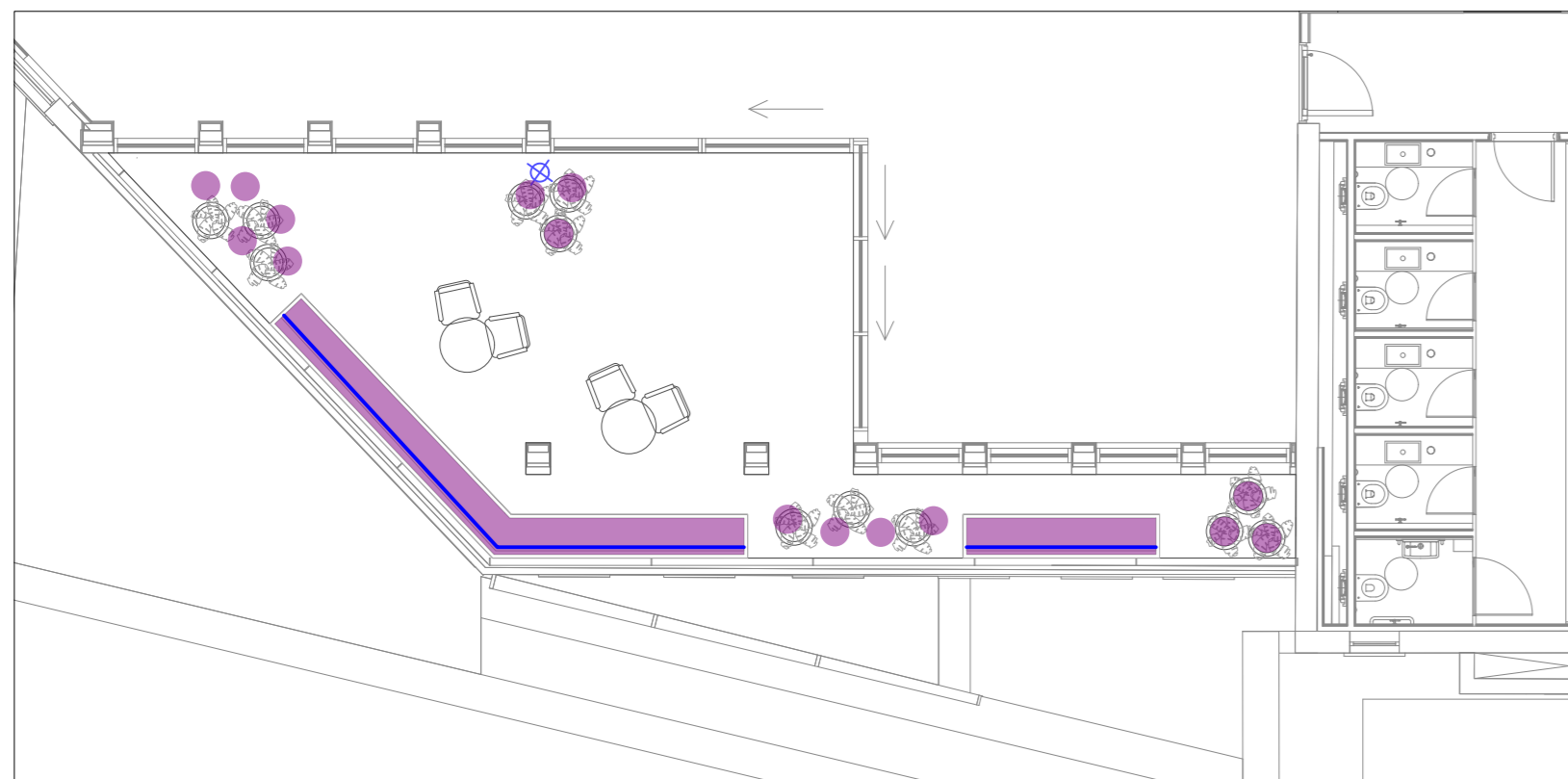
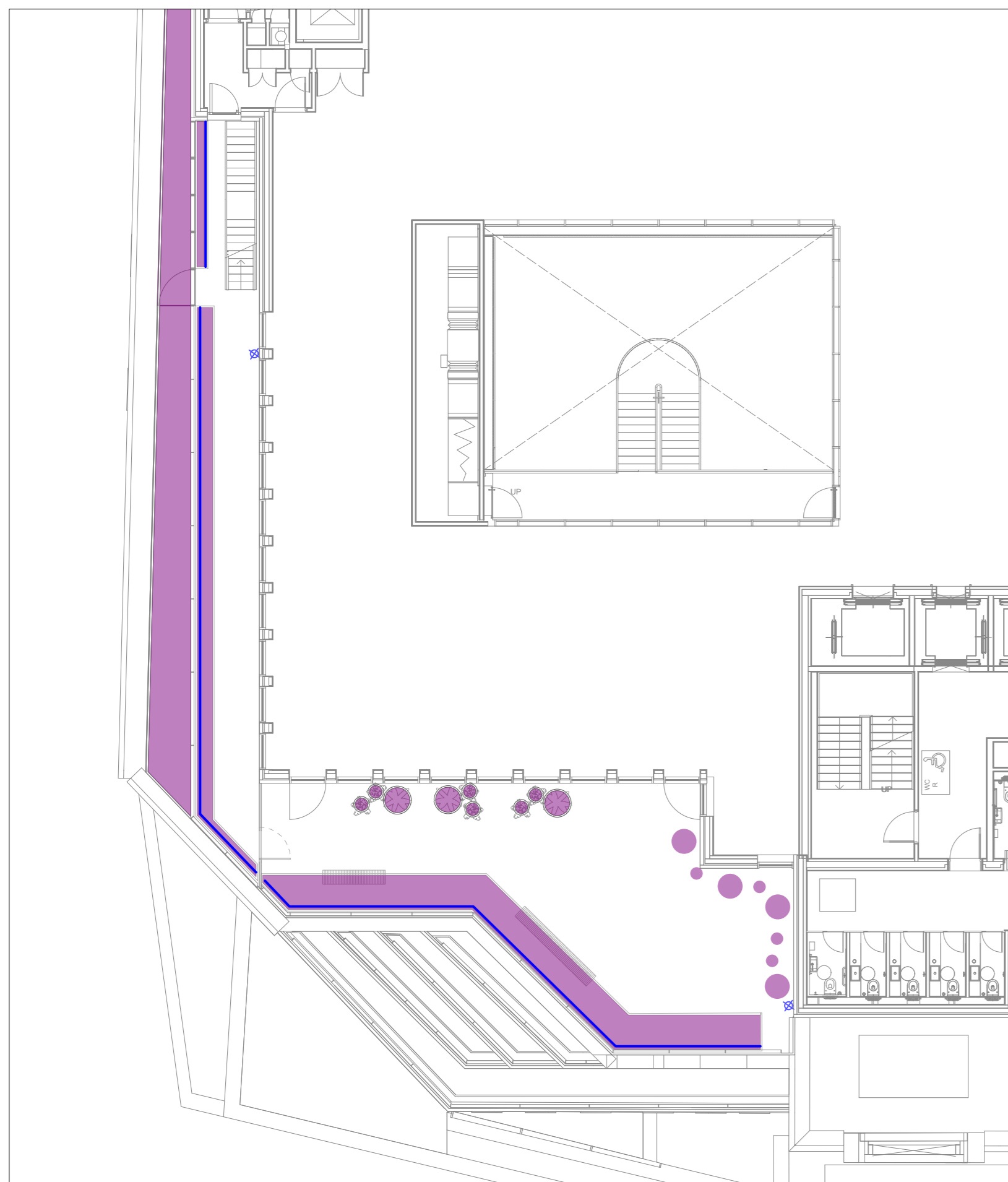


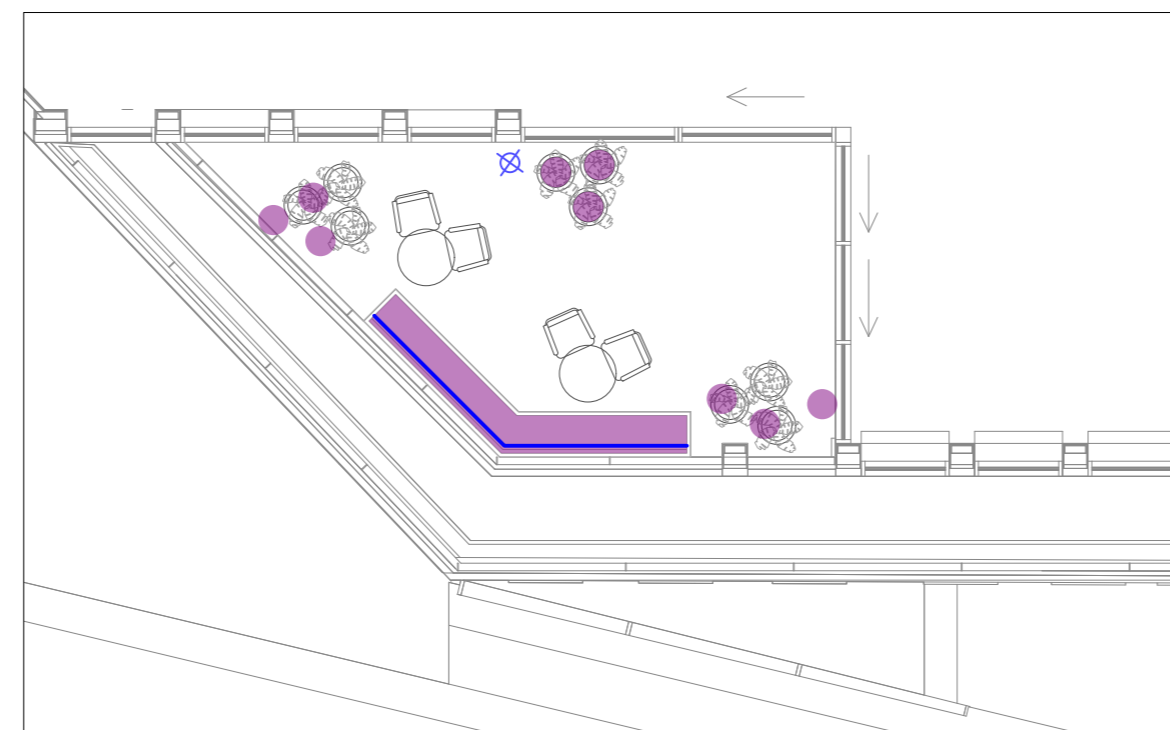
Level 00



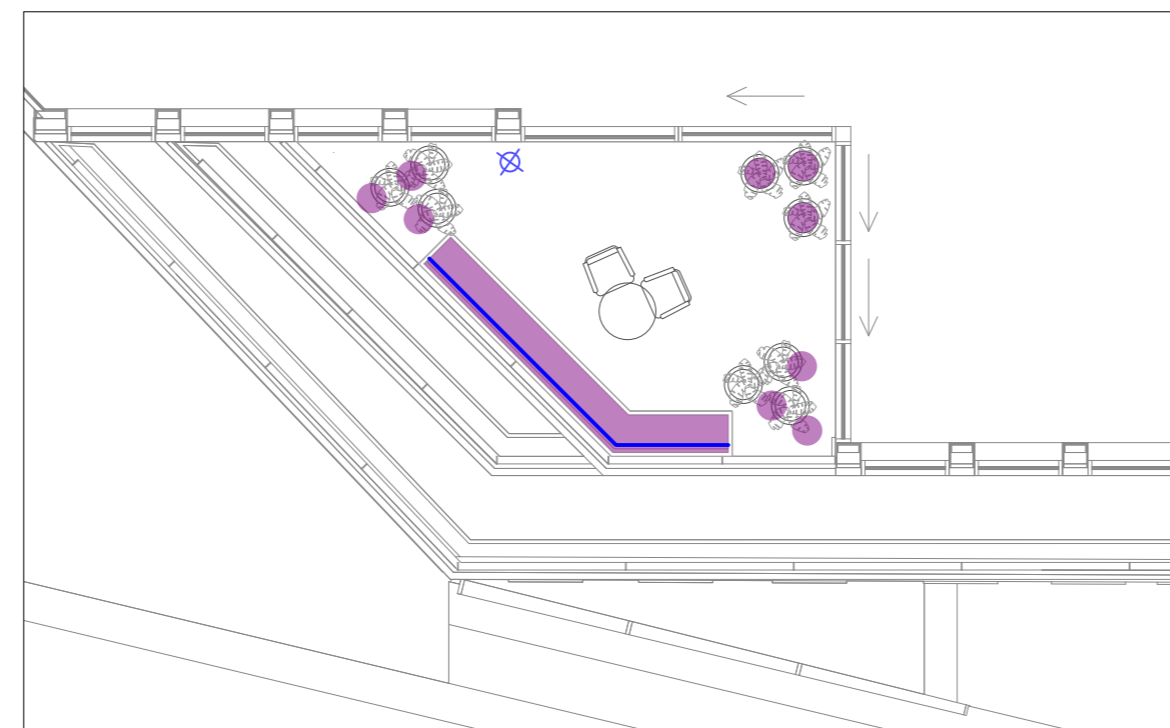
Level 02



Level 06



Level 03



Level 04

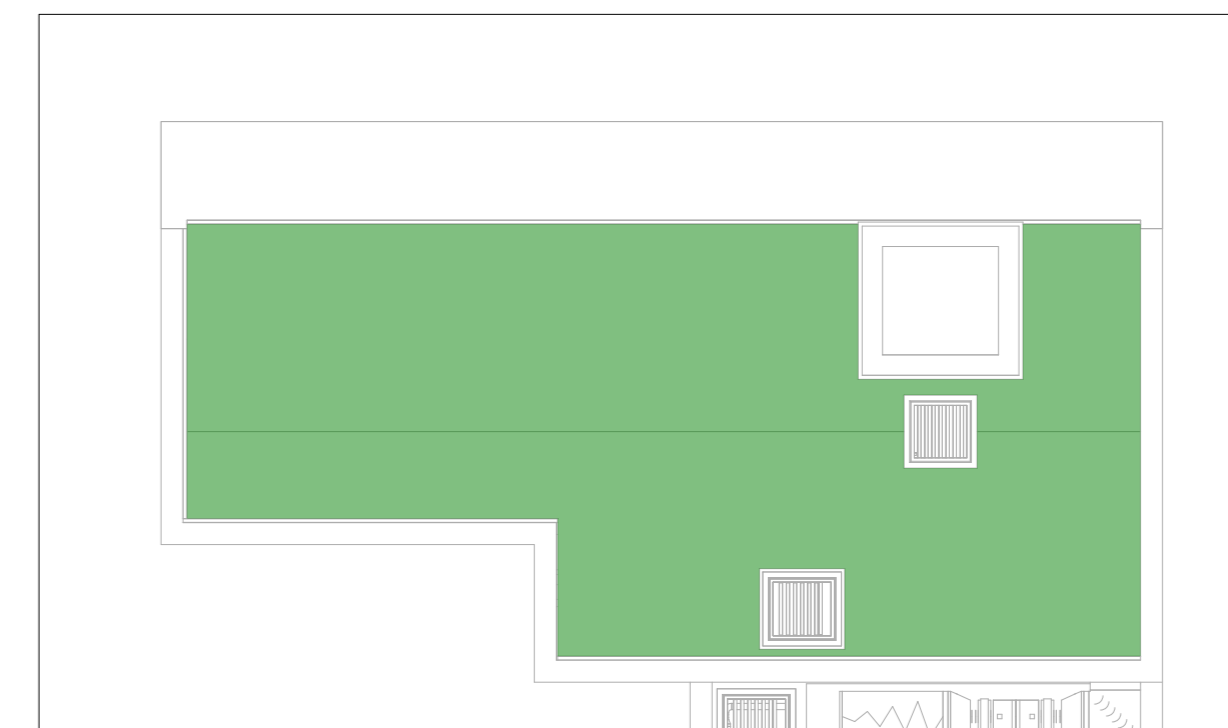


Level 07



Level 05

URBAN GREENING FACTOR CALCULATOR				
Surface Cover Type	Factor	Area (m ²)	Contribution	Notes
Semi-natural vegetation (e.g. trees, woodland, species-rich grassland) maintained or established on site.	1	0	0	
Wetland or open water (semi-natural; not chlorinated) maintained or established on site.	1	0	0	
Intensive green roof or vegetation over structure. Substrate minimum settled depth of 150mm.	0.8	404	323.2	Includes 5.6m ² free standing planters to LG floor
Standard trees planted in connected tree pits with a minimum soil volume equivalent to at least two thirds of the projected canopy area of the mature tree.	0.8	0	0	
Extensive green roof with substrate of minimum settled depth of 80mm (or 60mm beneath vegetation blanket) – meets the requirements of GRO Code 2014.	0.7	127	88.9	
Flower-rich perennial planting.	0.7	0	0	
Rain gardens and other vegetated sustainable drainage elements.	0.7	0	0	
Hedges (line of mature shrubs one or two shrubs wide).	0.6	0	0	
Standard trees planted in pits with soil volumes less than two thirds of the projected canopy area of the mature tree.	0.6	0	0	
Green wall – modular system or climbers rooted in soil.	0.6	75	45	
Groundcover planting.	0.5	0	0	
Amenity grassland (species-poor, regularly mown lawn).	0.4	0	0	
Extensive green roof of sedum mat or other lightweight systems that do not meet GRO Code 2014.	0.3	0	0	
Water features (chlorinated) or unplanted detention basins.	0.2	0	0	
Permeable paving.	0.1	0	0	
Sealed surfaces (e.g. concrete, asphalt, waterproofing, stone).	0	0	0	
Total Contribution			457.1	
Total Site Area (m²)				2215
Urban Greening Factor				0.206



Roof

- NOTES**
- All dimensions in millimetres unless otherwise shown.
 - All levels in metres above Ordnance Datum (mAOD) unless otherwise shown.
 - All dimensions to be checked on site and any discrepancies reported to Employer before pricing / work starts.
 - Any ambiguities or discrepancies within this drawing and any other information given elsewhere must be reported to Camlins and the Employer for clarification before pricing work proceeds.
 - All drawings to be read in conjunction with other Camlins drawings and specification information as appropriate.
 - Refer to relevant Engineer's and Architect's information as appropriate for confirmation of all engineering and architectural details.
 - All works to be carried out in accordance with the latest British Standards and appropriate codes of practice as a minimum.

Rev.	Date	Description	Checked by
A	2022-08-21	Green roof to 6th and 7th floor growing medium increased to 150mm depth	MSS
B	2022-08-09	Areas updated to new design	JS
C	2022-09-01	Winter garden planting extents reduced. Additional planters to floors 2, 3, 4, 5	MSS
D	2022-09-08	Level 06 green roof extents reduced.	MSS
E	2022-09-14	Level 06 - planter shortened to provide maintenance access to adjacent roof	MSS
F	2022-09-14	Level 07 planter updated	MSS

Revised by: Checked by:
 New Dolanog House, Severn Road,
 Welshpool, Powys, SY21 7AR
 01928 554886
 www.camlins.com

Camlins

21 Bloomsbury Street, London
 Capital 38

GA - Urban Greening Factor

Status: Stage 3
 Drawn by: JS
 Checked by: MSS

Drawing Number: SY696-000-1301
 Revision: E
 Scale: 1:100@A1
 Date: 17.05.2022