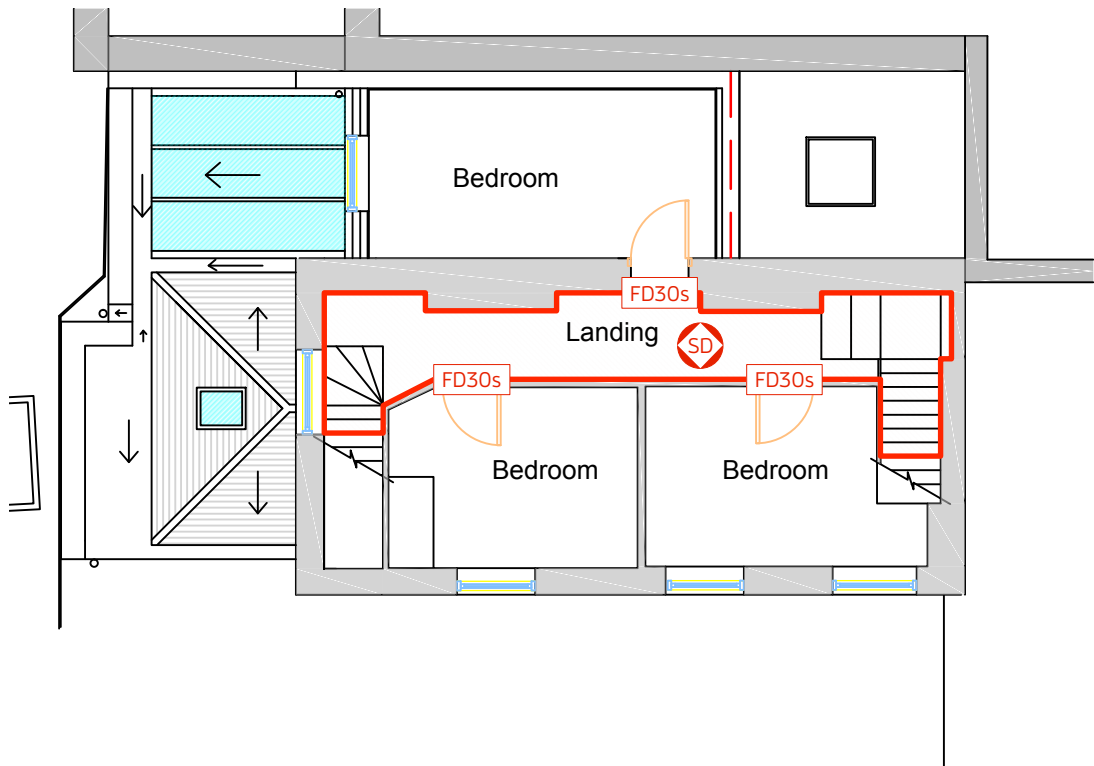
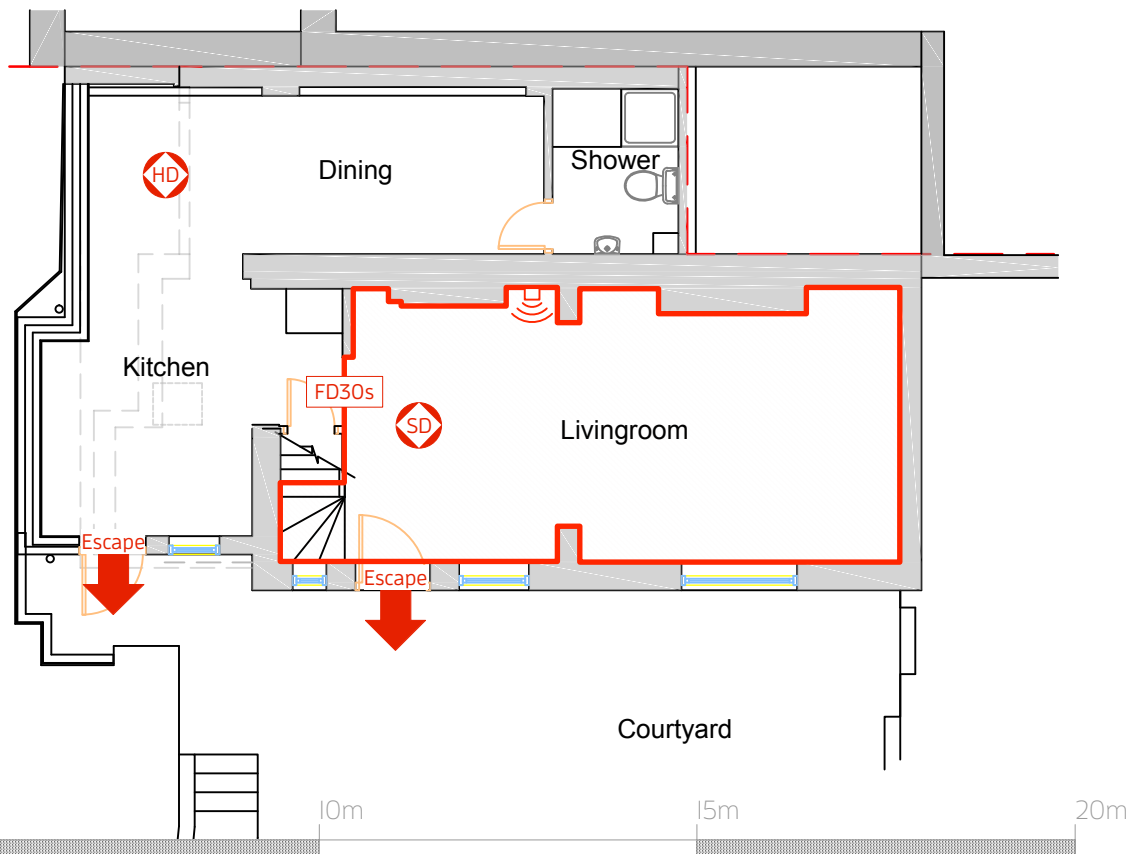


Fire Strategy - First Floor @ 1:100



Fire Strategy - Ground Floor @ 1:100



Fire Strategy Key

- FD30s Fire Door with Smoke seal. Number given is the minimum number of minutes of fire resistance that must be achieved.
- Minimum 30 minute fire resistant wall construction.
- Minimum 60 minute fire resistant wall construction.
- SD Smoke Detector linked to specialist fire detection system.
- HD Heat Detector linked to specialist fire detection system.
- (()) Alarm Sounder linked to specialist fire detection system.
- ➔ Escape door.

Protected means of escape.

Notes:

- 1) Provide 30 minutes fire resistance between floors and 60 minutes fire resistance between units;
- 2) Provide fire dampers / collars as required between all floors and compartment walls (denoted with red line on fire strategy drawings) to maintain the specified fire separation;
- 3) Emergency lighting to areas as indicated on M&E consultants information;
- 4) Fire alarm and detection system, to specialists design, to be linked with specialist building management system and specialist equipment (e.g. Lift);
- 5) Provide 30 minutes fire resistance to staircase structure.
- 6) Internal Fire Spread; Circulation spaces and garages to have wall and ceiling linings that meet Nation Class I, as defined by BS 476 "Fire tests on building materials and structures".
- 7) All steels are to be treated with intumescent steel paint to thermally insulate them in a fire for a period of 30 minutes.

RIBA Plan of Work Stage 3

Christopher Tredway Architects

3rd Floor, 175 - 176 Tottenham Court Road, London W1T 7NX.
E Mail: office@chrestredway.co.uk Phone: +44 (0)20 7101 9336

Wellmount Cottage, Well Road

Site: Wellmount Cottage, Well Road, Hampstead, London NW3 1LJ.
Title: Fire Strategy Plans
Date: 11/05/2024
Job No: PNJ / WMC
Drawing No: PNJ / WMC / 01
Revision: /
Scale: 1:100 @ 100% A3 L
© Christopher Tredway Architects Ltd. 2024