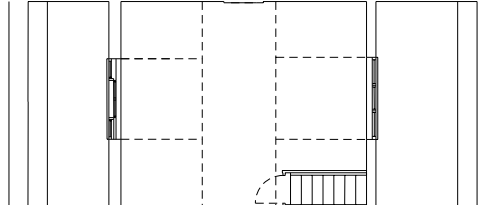
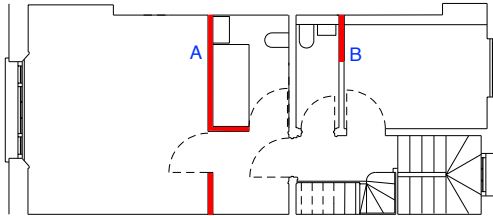


Third Floor



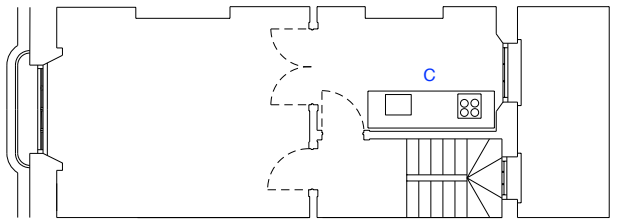
Second Floor



**A** Non-original gypsum plasterboard and stud walls removed - original scale of front room recovered.

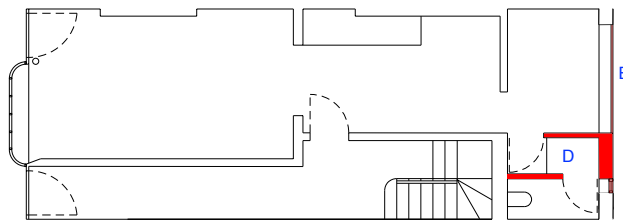
**B** WC closet shortened.

First Floor



**C** Kitchen unit removed from rear room (moved to Lower Ground Floor)

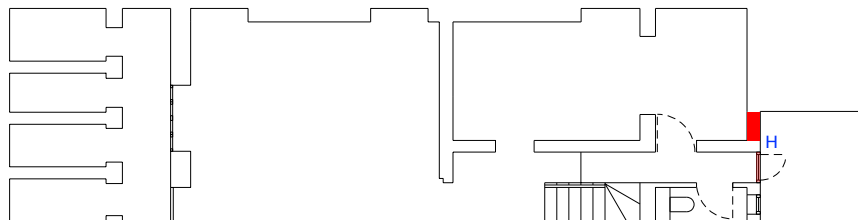
Ground Floor



**D** Existing kitchenette and WC removed

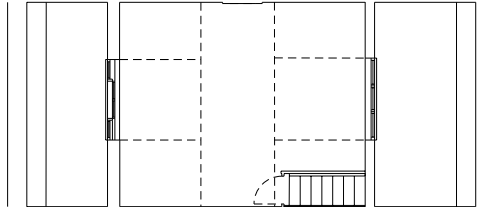
**E** Existing windows to rear facade removed and new windows installed (please see photos attached)

Lower Ground Floor

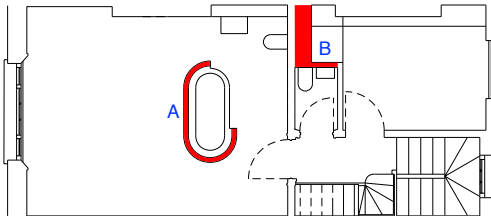


**H** Window added to back room and rear external door replaced

Third Floor

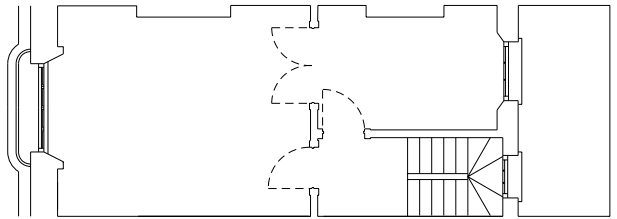


Second Floor

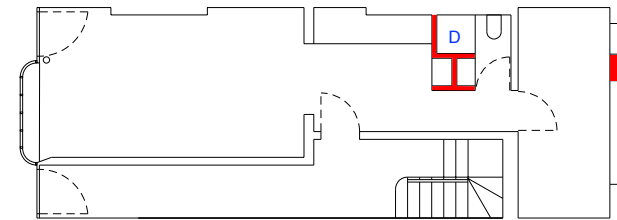


- A Freestanding bath and screen added.
- B WC closet shortened.

First Floor

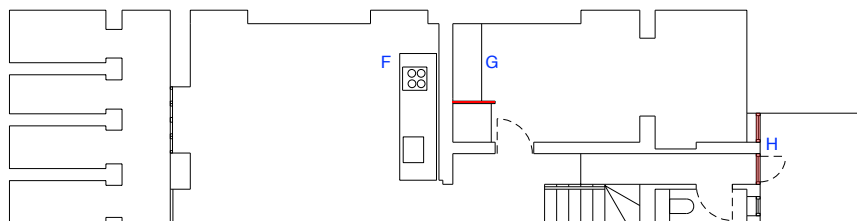


Ground Floor



- D New WC and shower and kitchenette added
- E Existing windows to rear facade removed and new windows installed (please see photos attached)

Lower Ground Floor



- F Kitchen unit added (moved from First Floor)
- G Shower and kitchenette added to back room
- H Window added to back room and rear external door replaced



View of rear facade through high level railings to south of St Pancras churchyard car park





View of rear facade through high level railings to south of St Pancras churchyard car park





View of rear facade through high level railings to south of St Pancras churchyard car park





View of rear facade close up to high level railings to south of St Pancras churchyard car park