

REVISIONS

Rev.	Date	By
.	.	.

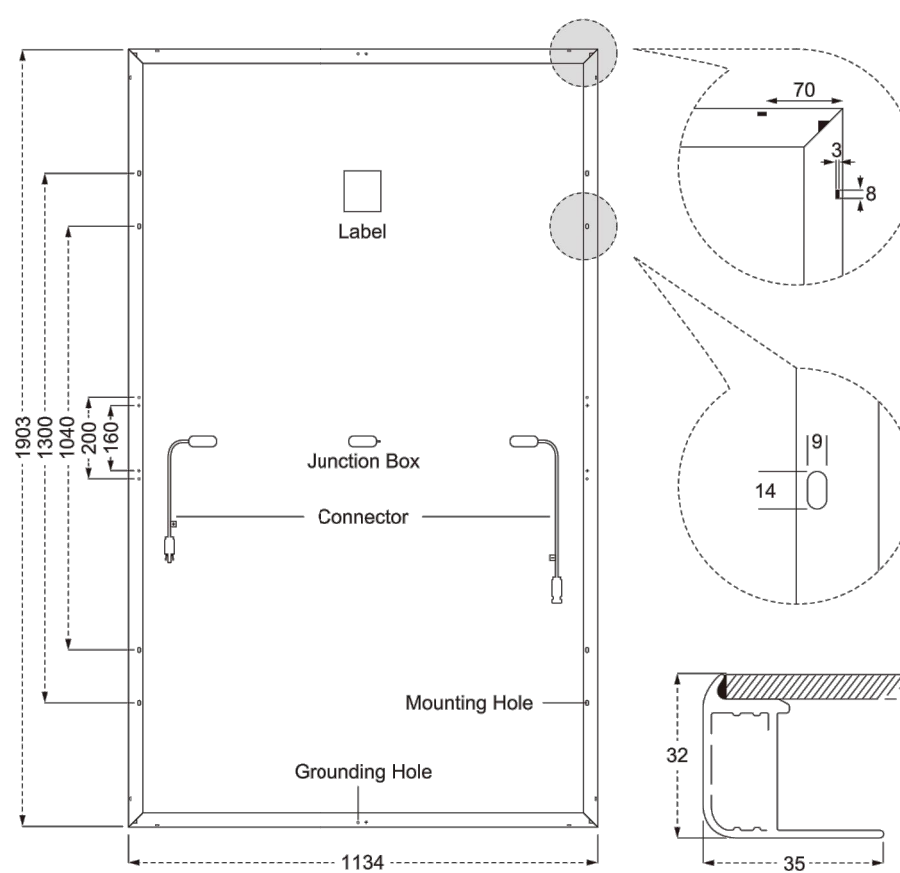
DHM-T60X10/FS(BW)

450~465W

Mechanical Specification

Cable	4.0mm ² , 300/400mm in length, (Including connector) length can be customized
No.of Cells	180 (6×30)
Glass	3.2mm High Transmission, Antireflection Coating
Junction box	IP68, 3 Bypass Diodes
Connector	MC4 Compatible
Weight	23.5kg
Cells Type	Mono 182×60.7mm
Dimension (L×W×T)	1903×1134×32mm
Packing	34pcs/pallet, 816pcs/40HQ

Design

GLOBAL
PATENTS

Operating Parameters

Maximum system voltage	1500V DC
Operating Temperature	-40 ~ +85°C
Maximum series fuse rating	20A
Snow load, frontside/Wind load, backside	5400Pa/2400Pa
Nominal operating cell temperature	45°C±2°C
Application level	Class A

STC——Electrical Characteristics

Module Type	DHM-T60X10/FS(BW)			
Maximum Power (Pmax/W)	450	455	460	465
Open-circuit Voltage (Voc/V)	62.0	62.2	62.4	62.6
Maximum Power Voltage (Vmp/V)	52.4	52.6	52.8	53.0
Short-circuit Current (Isc/A)	9.19	9.25	9.31	9.37
Maximum Power Current (Imp/A)	8.59	8.65	8.71	8.77
Module Efficiency (%)	20.85	21.08	21.32	21.55

Power Tolerance: 0~+5W, Temperature Coefficient of Isc: 0.05%/°C, Temperature Coefficient of Voc: -0.31%/°C, Temperature Coefficient of Pmax: -0.35%/°C

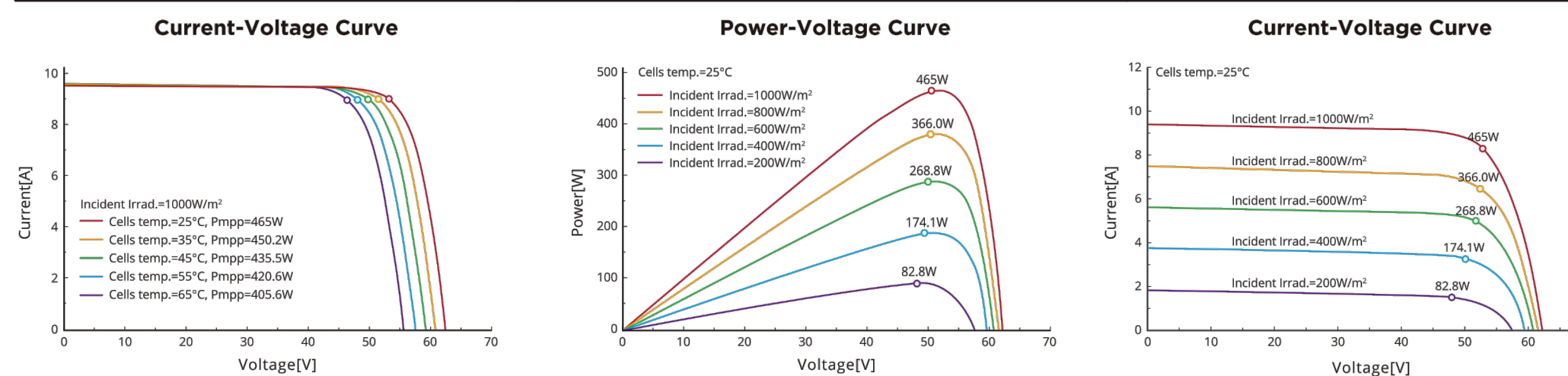
Standard Test Environment : Irradiance 1000W/m², Cell temperature 25°C, Spectrum AM1.5

NOCT——Electrical Characteristics

Maximum Power (Pmax/W)	339	342	346	350
Open-circuit Voltage (Voc/V)	58.7	58.9	59.1	59.3
Maximum Power Voltage (Vmp/V)	49.6	49.8	50.0	50.2
Short-circuit Current (Isc/A)	7.41	7.46	7.51	7.56
Maximum Power Current (Imp/A)	6.82	6.87	6.92	6.97

Standard Test Environment : Irradiance 800W/m², Ambient temperature 20°C, Spectrum AM1.5, Wind speed 1m/s

I-V Curve DHM-T60X10/FS(BW)-465W

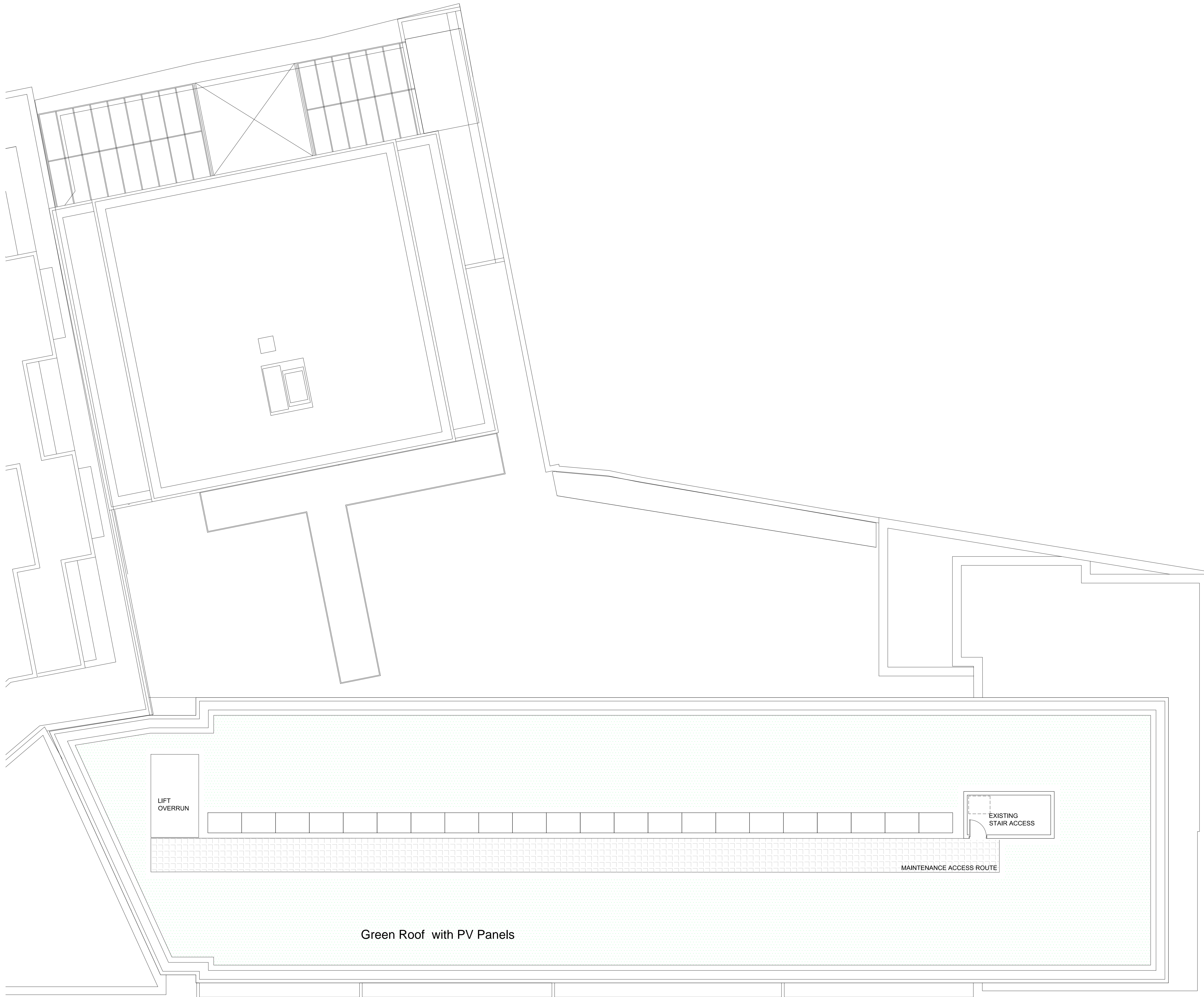
Add: No.1 Yaoyuan Road, Luyang District, Hefei City, Anhui, China · Facebook: [www.facebook.com/DAHsolar](#) · E-mail: [sales@dh-solar.cn](#)

1. DAH Solar 450-465W Datasheet
DHM-T60X10/FS(BW)

SOLAR PV - DAH Solar 450W
SIZE: 1903mm x 1134mm (APPROX)
GENERATION EFFICIENCY: 20%
ANGLE OF INCLINATION: 30
ORIENTATION: SE
22 no. 450W Panels = 9.9kWp
Target 9.45kWp

2. Proposed PV Load Generation

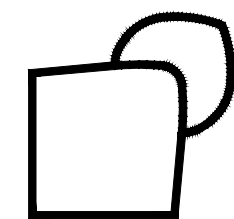
3. Proposed PV Roof Layout 1:100@ A0



PLANNING APPLICATION

ALL DIMENSIONS TO BE CHECKED ON SITE
WORK TO FIGURED DIMENSIONS ONLY
REPORT DISCREPANCIES TO THE ARCHITECT
AT ONCE BEFORE PROCEEDING

Contemporary Design Solutions



46 Great Marlborough Street
London
W1F 7JW
Telephone: 020 7494 9000 Fax: 020 7494 4944

Client

65 HOLMES ROAD LTD

Project Title

ADDITION OF 8 STUDENT STUDIO UNITS
OVER EXISTING CLASS & OFFICE SPACE
65 HOLMES ROAD
LONDON NW5 4NG

Drawing Title

Proposed PV Layout
Roof Plan

Scale	1: 100 @A0	Date	MAY 2024
Drawn	TT	Checked	CT
Drawing No.		Rev.	
220900-A(GA)P185		-	

PLOT DATE - 6/13/2024 12:17 PM