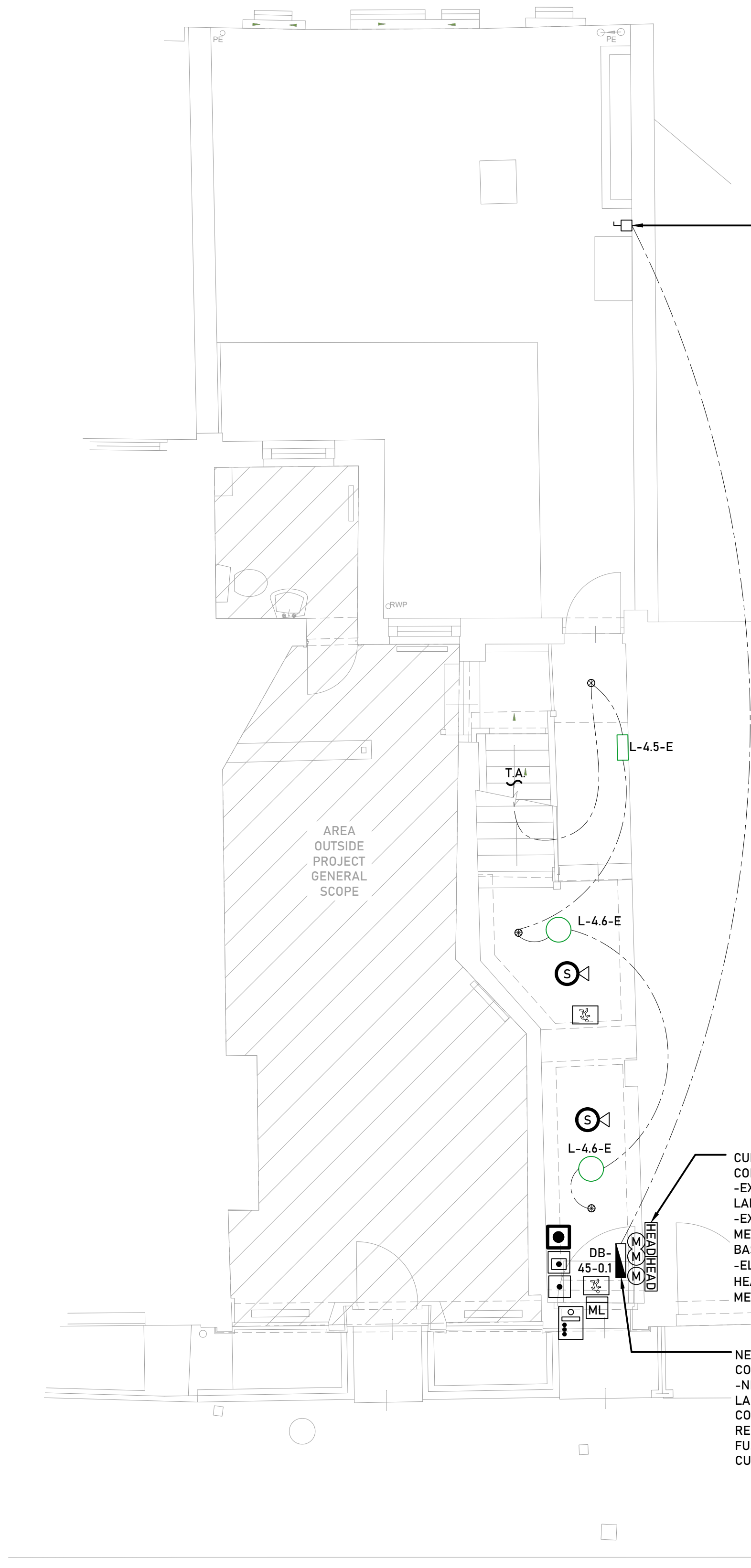
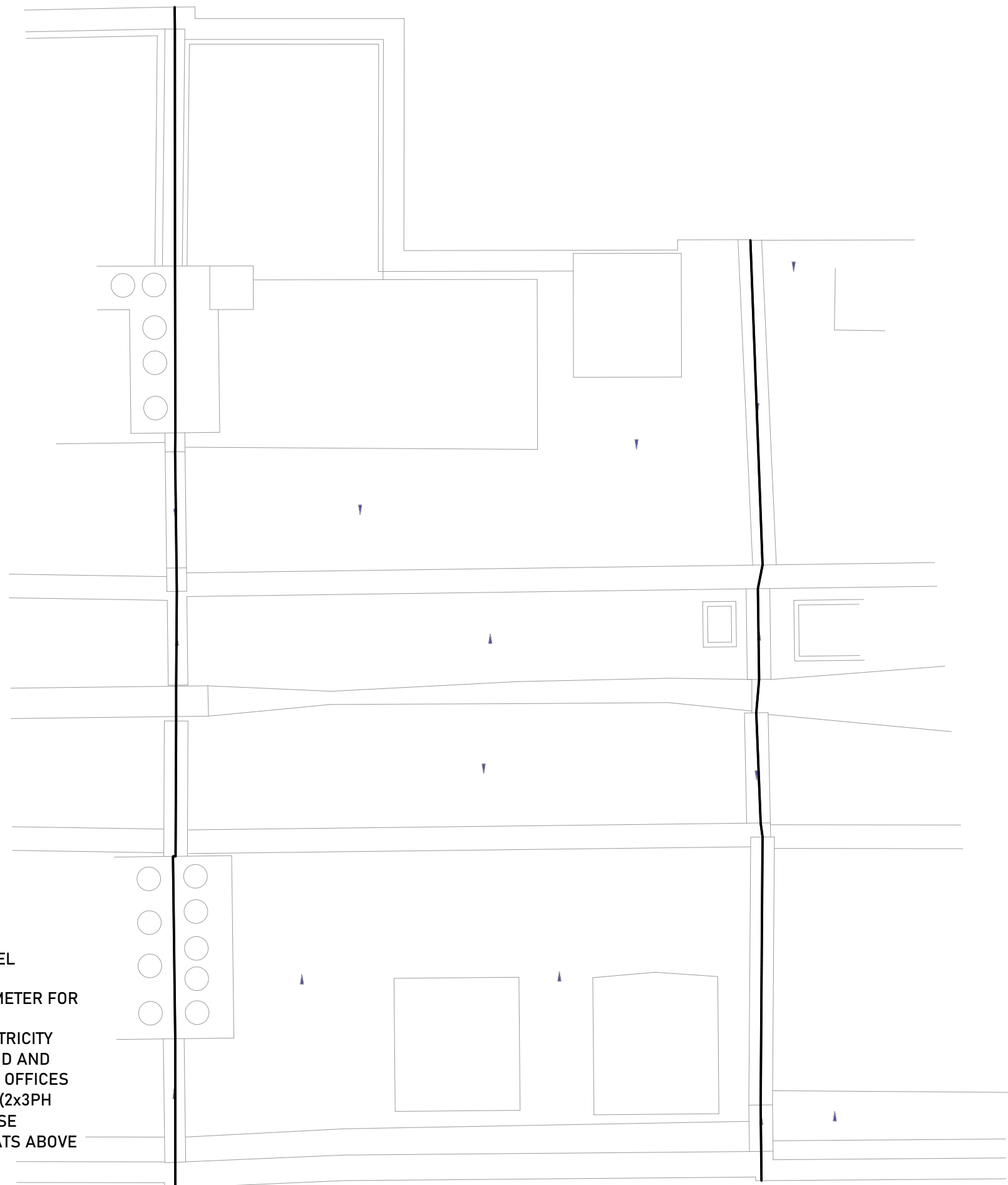


01
101
Proposed basement plan
1:100@A3; 1:50@A1



02
101
Proposed ground floor plan
1:100@A3; 1:50@A1



03
101
Proposed Roof Plan
1:100@A3; 1:50@A1

NOTES

- DO NOT SCALE
- TO BE READ IN CONJUNCTION WITH ALL OTHER LAURENCE OWEN LTD AND DESIGN TEAM PROJECT DOCUMENTS ISSUED
- FINAL SETTING OUT BY ARCHITECT
- IF IN DOUBT ASK
- DESIGN OF FIRE ALARM SYSTEM BY SPECIALIST INSTALLER - EQUIPMENT SHOWN INDICATIVE ONLY
- WHERE EMERGENCY LIGHTS OR EMERGENCY ESCAPE SIGNS ARE PRESENT, CIRCUITS MUST BE RUN WITH AN UNSWITCHED LIVE IN ADDITION TO THE SWITCHED LIVE, LIKEWISE PHASE-PULSE CONTROLLED LIGHTS

KEY - FIRE ALARM

- SMOKE DETECTOR (WITH SOUNDER)
- WIRELESS SMOKE DETECTOR (WITH SOUNDER)
- HEAT DETECTOR (WITH SOUNDER)
- WIRELESS HEAT DETECTOR (WITH SOUNDER)
- VISUAL ALARM DEVICE (VAD) & SOUNDER
- SMOKE DETECTOR WITH VAD & SOUNDER
- MANUAL CALL POINT
- WIRELESS MANUAL CALL POINT
- MAGNETIC DOOR HOLD OPEN

KEY - ACCESS CONTROL

- KEY CARD READER
- PUSH TO EXIT BUTTON
- PUSH TO EXIT BREAK GLASS
- MAGNETIC LOCK
- INTERCOM (EXTERNAL UNIT) - AUDIO WITH CAMERA
- INTERCOM (INTERNAL UNIT) - AUDIO-VISUAL

KEY - INTRUDER ALARM

- MOTION DETECTOR
- CONTACT SENSOR
- KEYPAD

ABBREVIATIONS

H.L., L.L. HIGH LEVEL, LOW LEVEL
F.A., F.B. FROM ABOVE, FROM BELOW
T.A., T.B. TO ABOVE, TO BELOW
F.A./T.B. FROM ABOVE TO BELOW
F.B./T.A. FROM BELOW TO ABOVE

| REV. | DATE | ISSUE |
|------|------------|---------------|
| P1 | 2024-06-10 | DRAFT STAGE 3 |

FOR INFORMATION

CLIENT
GREAT ORMOND STREET HOSPITAL
CHARITY

ARCHITECT
ROGER MEARS ARCHITECTS

PROJECT NAME
45 & 51 GREAT ORMOND STREET

DRAWING TITLE
ELECTRICAL SYSTEMS
NO. 45 - GROUND FLOOR

| PROJECT | DRAWING NAME | PAPER SIZE | SCALE |
|---------|--------------|------------|-------|
| P119-45 | V[90]100 | A1 | 1:50 |