

1. DO NOT SCALE
2. TO BE READ IN CONJUNCTION WITH ALL OTHER LAURENCE OWEN LTD AND DESIGN TEAM PROJECT DOCUMENTS ISSUED
3. FINAL SETTING OUT BY ARCHITECT
4. IF IN DOUBT ASK
5. DESIGN OF FIRE ALARM SYSTEM BY SPECIALIST INSTALLER - EQUIPMENT SHOWN INDICATIVE ONLY
6. WHERE EMERGENCY LIGHTS OR EMERGENCY ESCAPE SIGNS ARE PRESENT, CIRCUITS MUST BE RUN WITH AN UNSWITCHED LIVE IN ADDITION TO THE SWITCHED LIVE, LIKEWISE PHASE-PULSE CONTROLLED LIGHTS

LXX(-E)	LUMINAIRE REFERENCE NUMBER XX -E DENOTES INTEGRAL EMERGENCY
	LINEAR LUMINAIRE
	TRACK
	LED STRIP
	DOWNLIGHT
	WALL-MOUNTED UP/DOWNLIGHT
	DECORATIVE WALL FITTING
	BULKHEAD/DOME WALL FITTING
	BULKHEAD/DOME CEILING FITTING
	PENDANT
	TRACK FITTING
	ILLUMINATED EMERGENCY EXIT SIGN
	PRESENCE DETECTOR (PIR)
	PHOTOCELL
	COMBINED PIR & PHOTOCELL
	LIGHT SWITCH, X NO. OF GANGS
	2 WAY / INTERMEDIATE LIGHT SWITCH
	WIRELESS LIGHT SWITCH
	DIMMABLE LIGHT SWITCH
	LIGHTING CONTROL PANEL

H.L., L.L. HIGH LEVEL, LOW LEVEL
F.A., F.B. FROM ABOVE, FROM BELOW
T.A., T.B. TO ABOVE, TO BELOW
F.A./T.B. FROM ABOVE TO BELOW
F.B./T.A. FROM BELOW TO ABOVE

CLIENT
GREAT ORMOND STREET HOSPITAL
CHARITY

ARCHITECT
ROGER MEARS ARCHITECTS

PROJECT NAME
45 & 51 GREAT ORMOND STREET

DRAWING TITLE

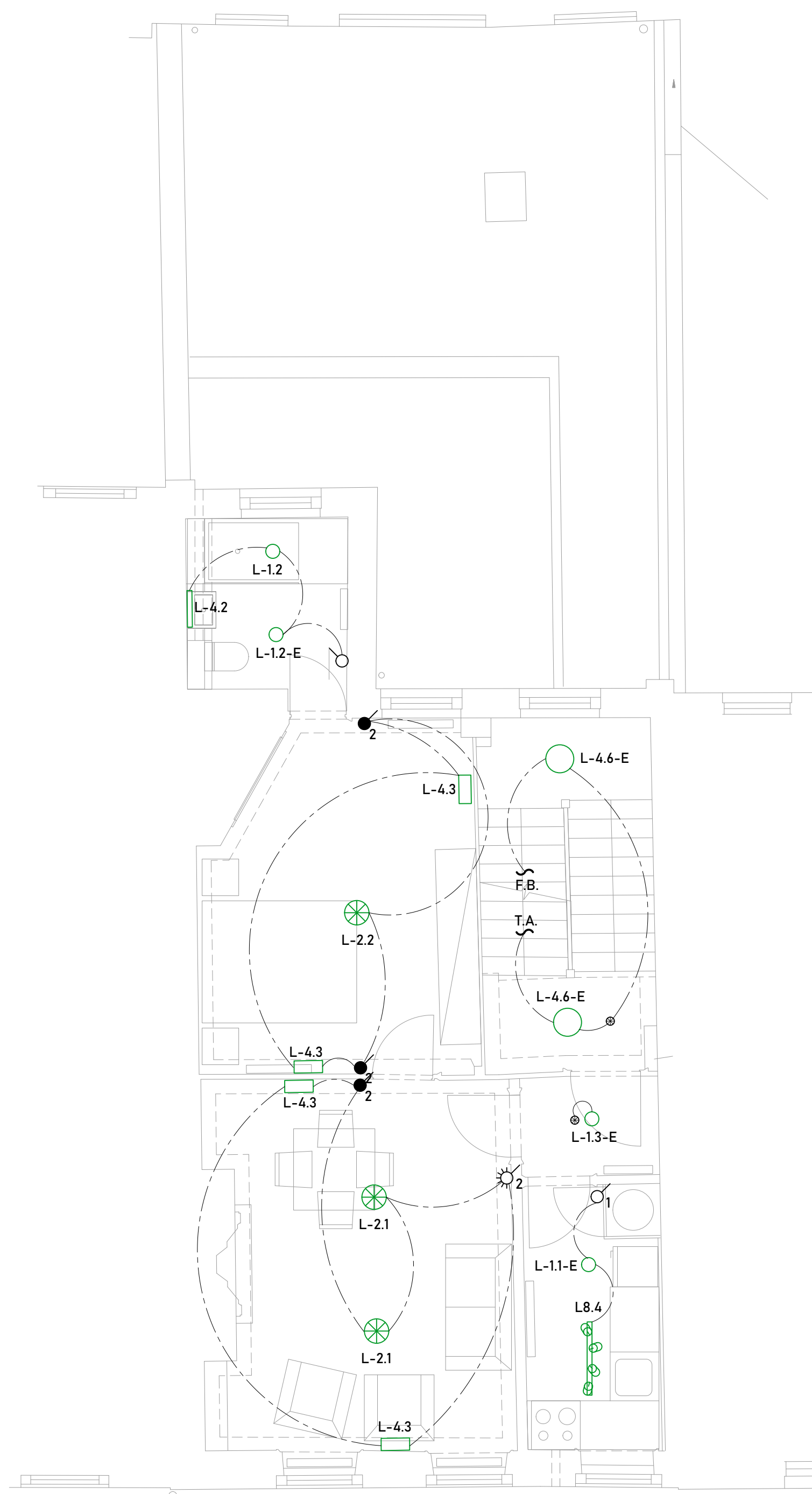
LIGHTING & EMERGENCY LIGHTING
NO. 45 - FIRST, SECOND & THIRD FLOORS

PROJECT	DRAWING NAME	PAPER SIZE	SCALE
P119-45	V[21]101	A1	1:50

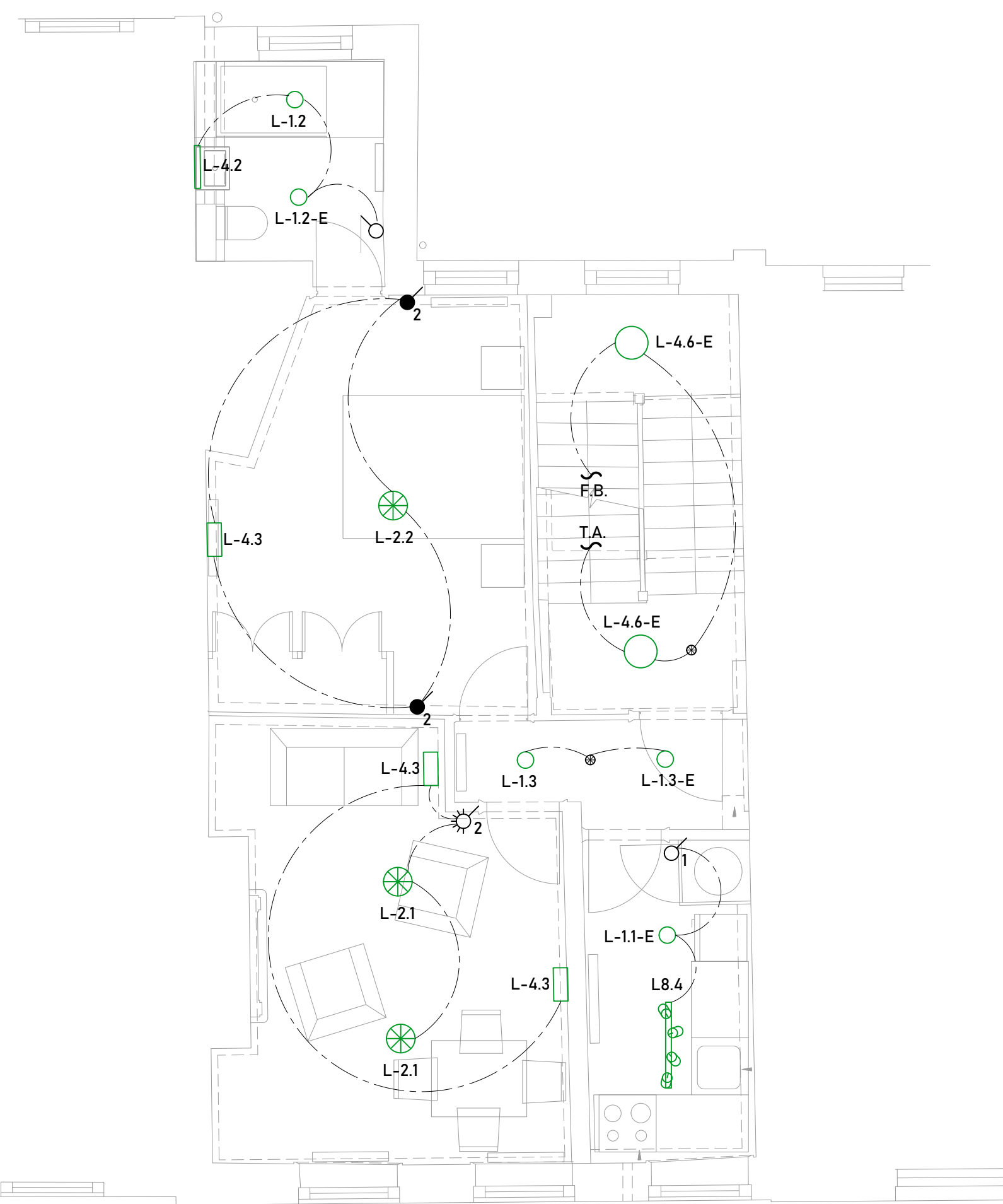
Building Services
Engineering &
Environmental Design

LAURENCE
OWEN

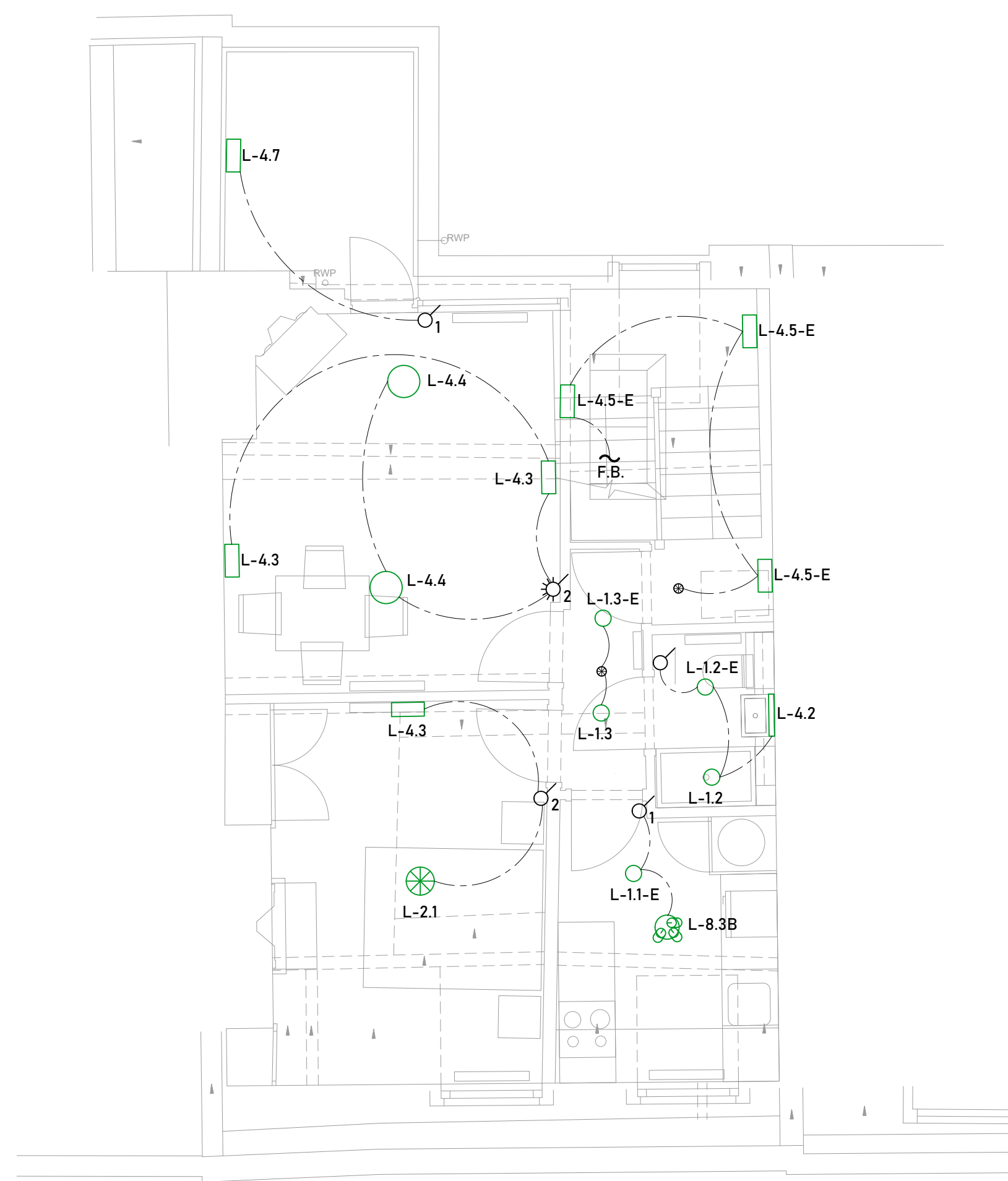
Laurence Owen Ltd is a private limited company registered in England and Wales, No. 11308905
Registered Office: 86-90 Paul Street, London, EC2A 4NE
© Copyright Laurence Owen Ltd
www.laurence-owen.co.uk



01	Proposed first floor plan
102	1:100@A3; 1:50@A1



02	Proposed second floor plan
102	1:100@A3; 1:50@A1



03	Proposed Third Floor Plan
102	1:100@A3; 1:50@A1