

Rev	Date	Revision	By	Chk
P1	230120	Draft Issue for Planning	OS	TK
P2	230217	Final Draft Issue	OS	TK
P3	230224	Issue for Planning	AB	OS

Notes

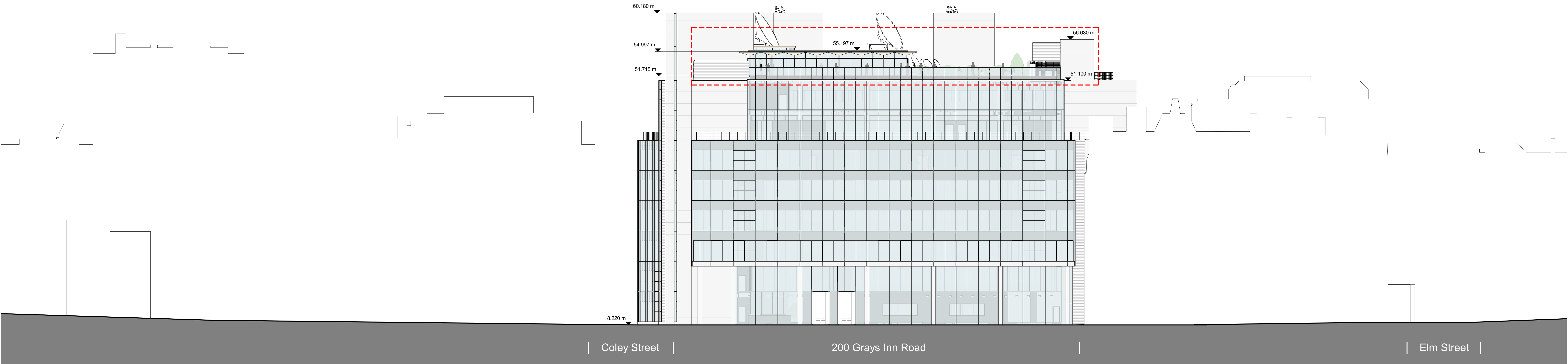
For Health & Safety related information please refer to the Rolling Designers Risk Register. Where relevant, elements identified on this register are highlighted within the model and on the drawings with the following sign.

- DO NOT SCALE: unless otherwise stated.
- Drawing to be printed in colour.
- All information contained in this drawing (including digital data) should be checked and verified prior to any fabrication or construction. Any inaccuracies or omissions should be reported to Bennetts Associates.
- Unless otherwise stated, all grids or co-ordinates are based on the Ordnance Survey National Grid (a GCS, OS datum).
- Unless otherwise stated, all spot heights and levels are expressed as AOD for "above ordnance datum" based on the Ordnance Survey ODN (Ordnance Datum Newlyn).

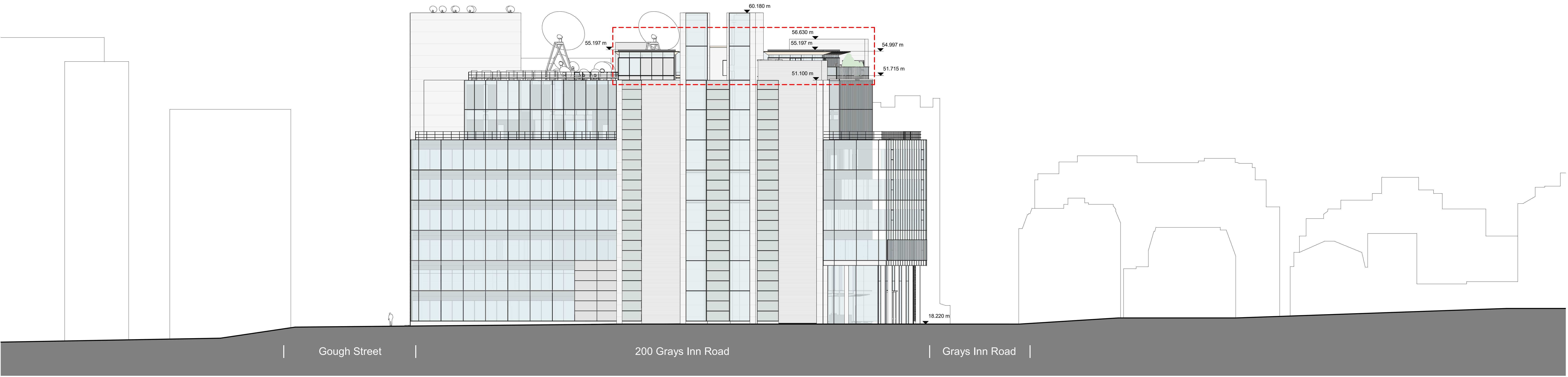
Bennetts Associates Architects make no warranties, express or implied, with respect to the scope of the data provided herewith, regardless of its format or the means of its transmission.

All existing survey data is based on, or reference from, 3rd Party information. Unless otherwise stated, all structural, mechanical, electrical information is based on, or reference from, 3rd Party data.

© Crown Copyright 2021. All Rights Reserved.  
Ordnance Survey License 122456



1 20-Grays Inn Rd



2 20-Coley St  
1 : 200

0 10m

## BENNETTS ASSOCIATES

1 Rawstorne Place, London EC1V 7NL  
T +44(0)207 5203300 •  
www.bennettsassociates.com  
For Bennetts Associates' electronic information please disclaimer -  
www.bennettsassociates.com/informationanddisclaimer/

Project  
200 Gray's Inn Road  
GPE

Project No. GIR

Drawing Title  
Proposed Elevation  
Streetscape Elevations

Drawing Number  
GIR-BA/20-E1-DP-A-0

Revision/Suitability  
P3 S4

Scale @ A2  
Scale @ A0  
1 : 200

Revision Date  
230224

YYMM DD