

Rev	Date	Revision	By	Chk
P01	230120	Draft Issue for Planning	OS	TK
P02	230217	Final Draft Issue	OS	TK
P03	230224	Issue for Planning	AB	OS
P04	240530	Issue for NMA	NR	OS

Notes

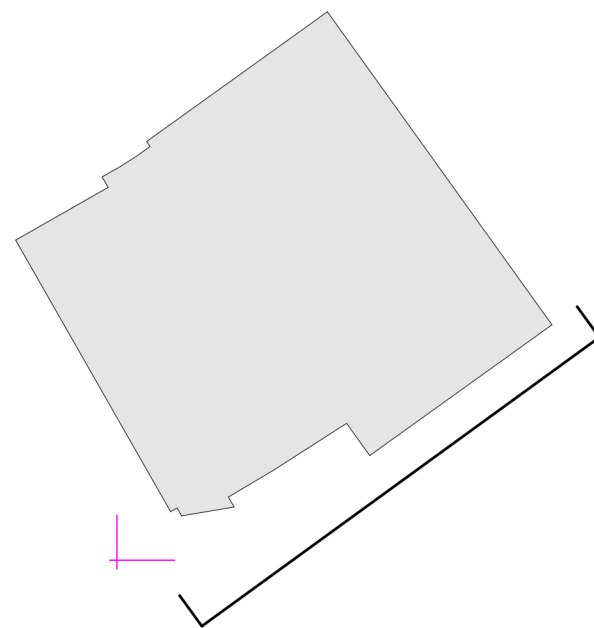
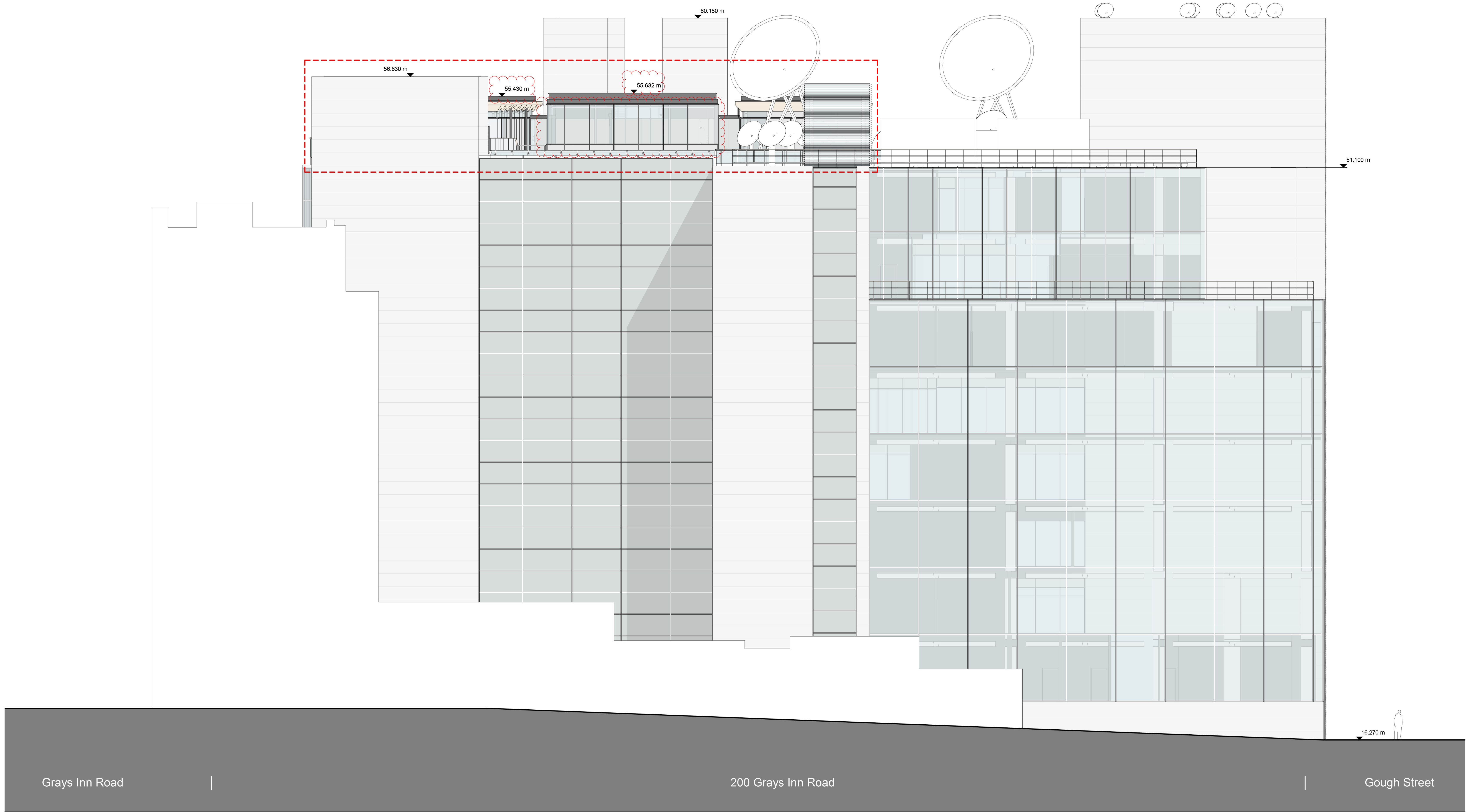
For Health & Safety related information please refer to the Risking Designers Risk Register. Where relevant, services identified on this register are highlighted within the model and on the drawings with the following logo.

- DO NOT SCALE FROM DRAWING:
- 1. Drawing to be printed in colour.
  - 2. All information contained in the drawing (including digital data) should be checked and verified prior to any fabrication or construction. Any inaccuracies or omissions should be reported to Bennetts Associates.
  - 3. Unless otherwise stated, all grids or co-ordinates are based on the Ordnance Survey National Grid (as GPS Coordinates).
  - 4. Unless otherwise stated, all spot heights and levels are represented as AOD (above ordnance datum) based on the Ordnance Survey ODN (Ordnance Datum Newlyn).

Bennetts Associates Architects make no warranties, express or implied, with respect to the use of the data provided hereafter, regardless of its format or the means of its transmission.

All existing survey data is based on, or reference from, 3rd Party information. Unless otherwise stated, all structural, mechanical, electrical information is based on, or reference from, 3rd Party data.

© Crown Copyright 2021. All Rights Reserved.  
Ordnance Survey Licence 123456



0 5m

## BENNETTS ASSOCIATES

1 Rawstorne Place, London EC1V 7NL  
T +44(0)207 5203300 • www.bennettsassociates.com  
E mail@bennettsassociates.com  
For Bennetts Associates, electronic information issue disclaimer -  
www.bennettsassociates.com/informationanddisclaimer/

Project 2117  
200 Gray's Inn Road  
GPE

Drawing Title  
Proposed Elevation  
Elm Street  
South

Drawing Number  
200GIR-BA-20-ES1-DP-A-0  
Revision/Suitability  
PD4 S4

Scale @ A2 Scale @ A0  
As indicated  
Revision Date  
240530  
YY MM DD