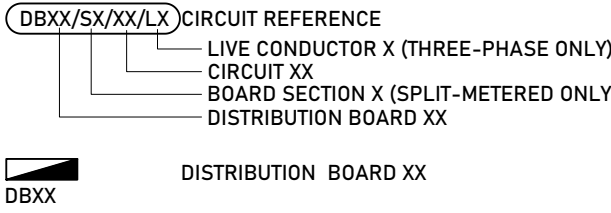
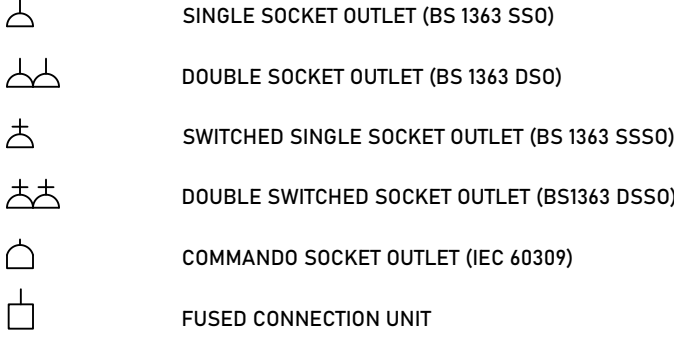


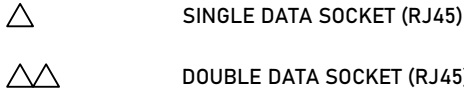
KEY - LV POWER DISTRIBUTION



KEY - SMALL POWER



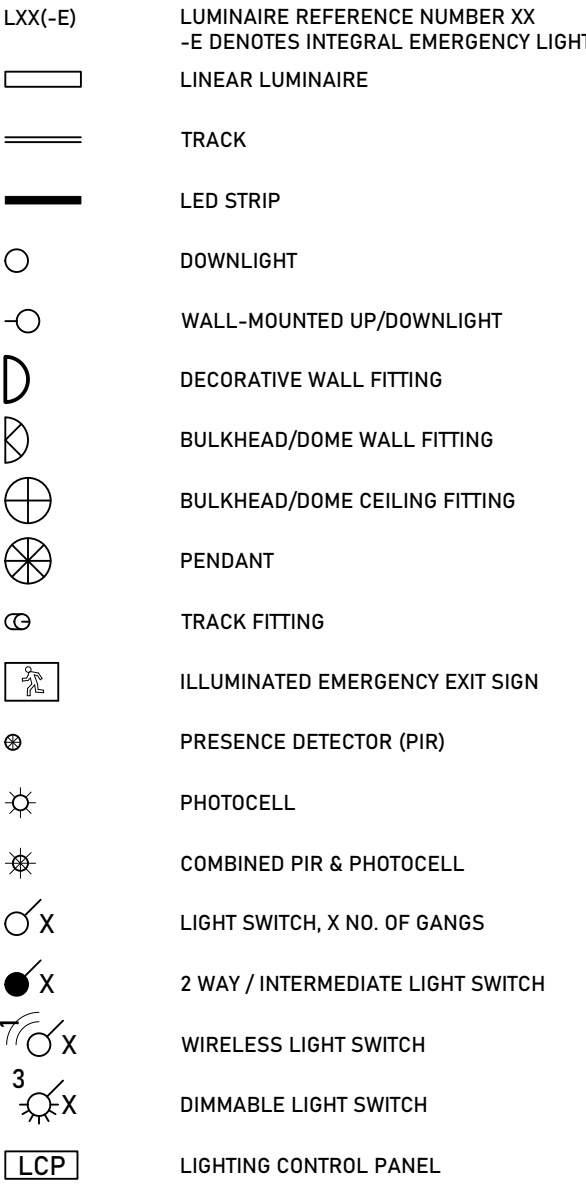
KEY - DATA



NOTES

- DO NOT SCALE
- TO BE READ IN CONJUNCTION WITH ALL OTHER LAURENCE OWEN LTD AND DESIGN TEAM PROJECT DOCUMENTS ISSUED
- FINAL SETTING OUT BY ARCHITECT
- IF IN DOUBT ASK
- DESIGN OF FIRE ALARM SYSTEM BY SPECIALIST INSTALLER - EQUIPMENT SHOWN INDICATIVE ONLY
- WHERE EMERGENCY LIGHTS OR EMERGENCY ESCAPE SIGNS ARE PRESENT, CIRCUITS MUST BE RUN WITH AN UNSWITCHED LIVE IN ADDITION TO THE SWITCHED LIVE, LIKEWISE PHASE-PULSE CONTROLLED LIGHTS

KEY - LIGHTING



ABBREVIATIONS

H.L., L.L. HIGH LEVEL, LOW LEVEL
F.A., F.B. FROM ABOVE, FROM BELOW
T.A., T.B. TO ABOVE, TO BELOW
F.A./T.B. FROM ABOVE TO BELOW
F.B./T.A. FROM BELOW TO ABOVE

REV.	DATE	ISSUE
P1	2024-06-10	DRAFT STAGE 3

FOR INFORMATION

CLIENT
GREAT ORMOND STREET HOSPITAL CHARITY

ARCHITECT
ROGER MEARS ARCHITECTS

PROJECT NAME
45 & 51 GREAT ORMOND STREET

DRAWING TITLE
LV DISTRIBUTION AND SMALL POWER
NO. 51 - FIRST, SECOND & THIRD FLOORS

PROJECT	DRAWING NAME	PAPER SIZE	SCALE
P119-51	V[2-]J01	A1	1:50

Building Services
Engineering &
Environmental Design

LAURENCE
OWEN

Laurence Owen Ltd is a private limited company registered in England and Wales, No. 11508905
Registered Office: 88-90 Paul Street, London, EC2A 4NE
© Copyright Laurence Owen Ltd
www.laurence-owen.co.uk

