

# Tuckey Design Studio

6 June 2024

Acland Burghley School  
Design and Access Statement  
Media Suite Condenser Unit

## Introduction



Site bird's-eye view

Acland Burghley School sits on the northern border of the Kentish Town neighbourhood, with the main entrance just off the cross roads at Tufnell Park Station. Bordering Dartmouth Park Hill to the east of the site lie three 5 storey towers connecting centrally to a 3 storey administration block. A longer block is situated on the north west of the site runs parallel to the train tracks which is covered by a sports pitch, gym and car park.

The additions of the condensers within this application are to support a series of internal alterations which have previously received Listed Building Consent - Ref. 2023/5151/L. This work is part funded by Camden Council and part funded by the T Level Capital Fund and is due to be complete for September 2024.

## Heritage Statement



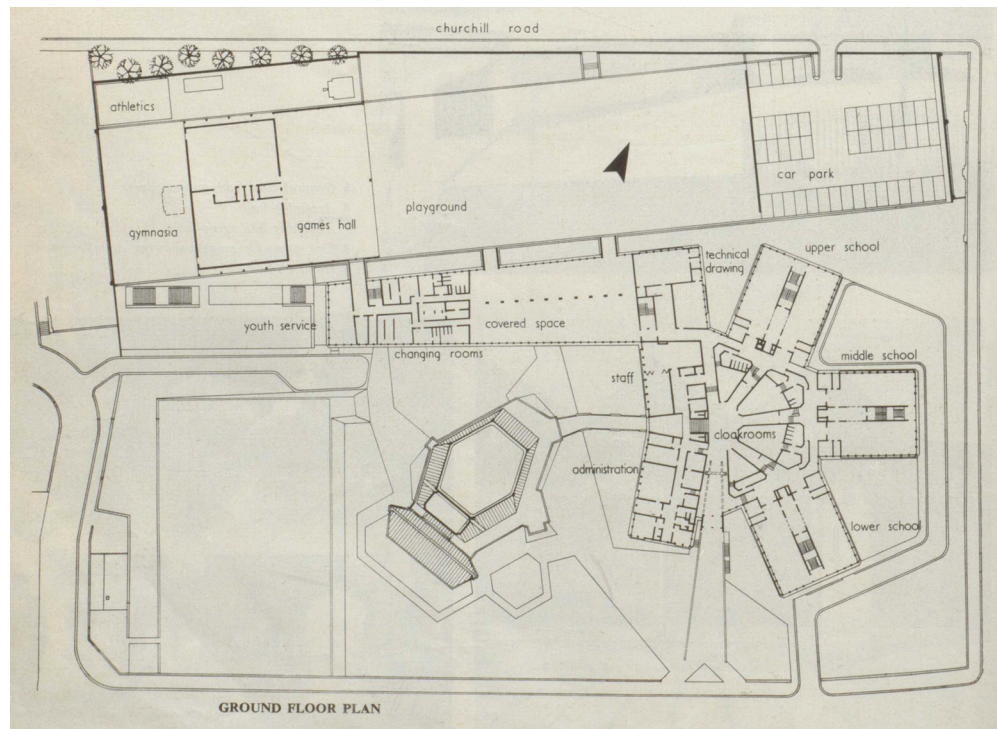
Historic images of the external concrete façades

With the school dating back to 1884, this mixed comprehensive has a rich historic lineage of providing education for children between the age of 11 and 19 within the borough of Camden.

Now housed in the recently Grade II listed building which was constructed in the latter half of the 1960s, the school continues to provide a well-rounded education across the broad curriculum to over 1000 students each year. The school is now also home to the Orchestra for the Age of Enlightenment who took up residence in September 2020. They have an office on the school grounds and use the Assembly Hall to rehearse, allowing them to live, work and play amongst the students.

The elevations of the building have bold pre-cast concrete elements and strong horizontal lines defined by long spans of glazing sandwiched between the textured concrete elements.

The placement of the condenser unit we are applying for sits within the gully around the north side of the site and below ground level and does not interfere with any of these important features.



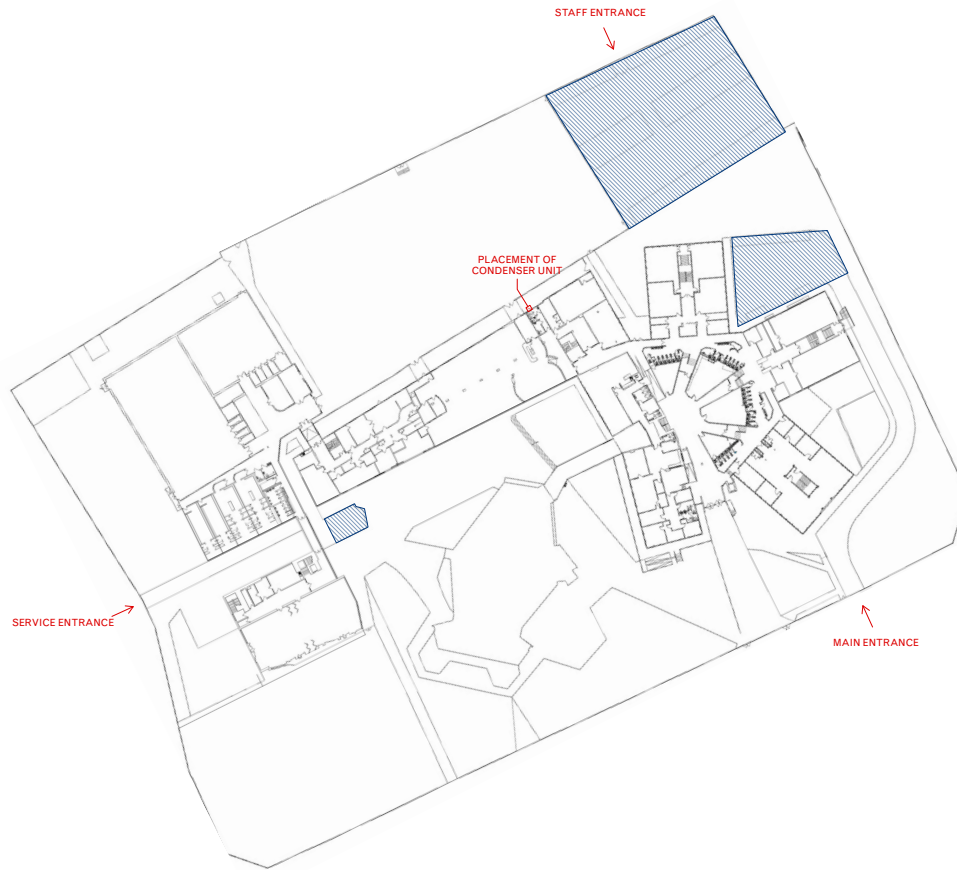
Original plan with the elevation in question facing Churchill Road



## Access

The proposed site for the condenser unit is next to the current west block and can be easily accessed from the staff car park. This work will also be undertaken as part of a large scheme so provisions for access and site security will already be in place.

The condenser will be placed next to the existing row of units and will be free standing to match.

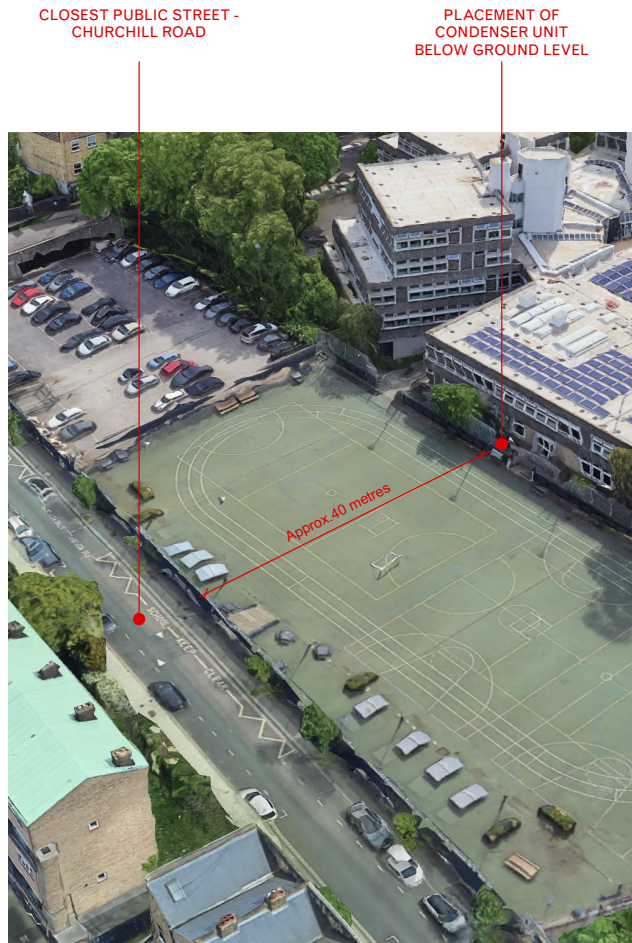


Site plan



Existing situation showing current condensers

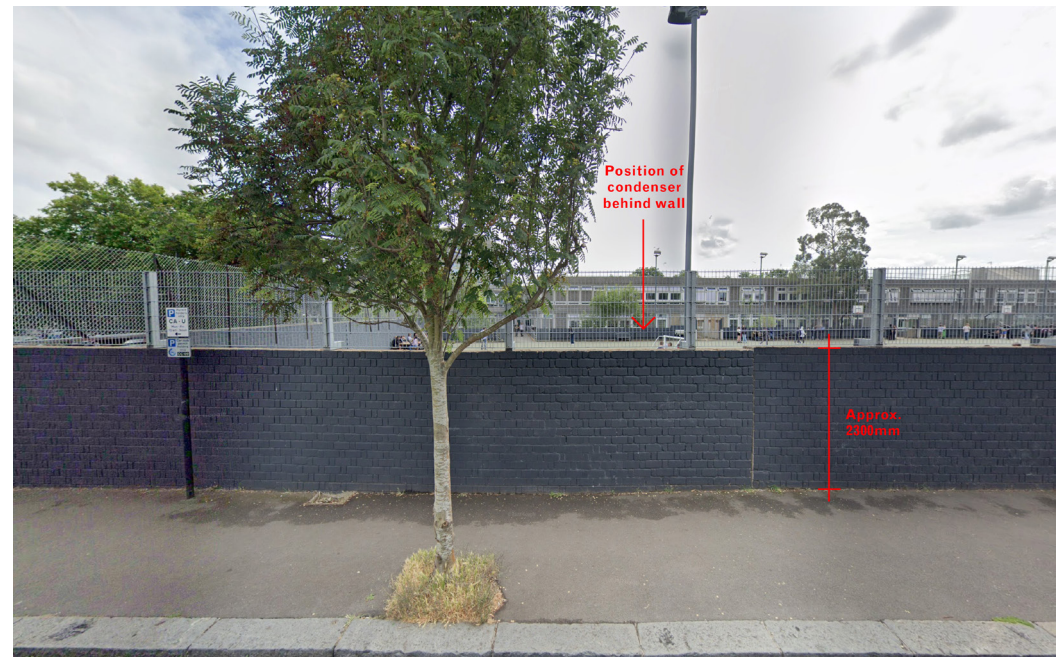
## Placement



Placement of condenser unit

Due to its proximity to the nearest street and the fact that it is positioned below ground level behind two brick walls, the condenser unit is unlikely to be seen or heard unless you are within the grounds of the school.

This condenser unit will be used to provide heating and cooling to several new media classrooms which border this elevation.



View from the nearest public street

# Tuckey Design Studio

Document Prepared by

**Joel Donoghue**

Document Reviewed by

**Emaad Damda**

Date

**5 July 2024**

General

**studio@tuckeydesign.com**

TDS\_ClientPresentationA4\_REV.001  
ISO 9001:2015

London

**+44 (0)20 8960 1909**  
**58 Milson Road**  
**London W14 0LB**  
**United Kingdom**

Switzerland

**+41 (0)41 8871406**  
**Gotthardstrasse 44**  
**6490 Andermatt**  
**Switzerland**

All rights reserved. Redistribution or reproduction of any part  
of the document is prohibited except under given permission.