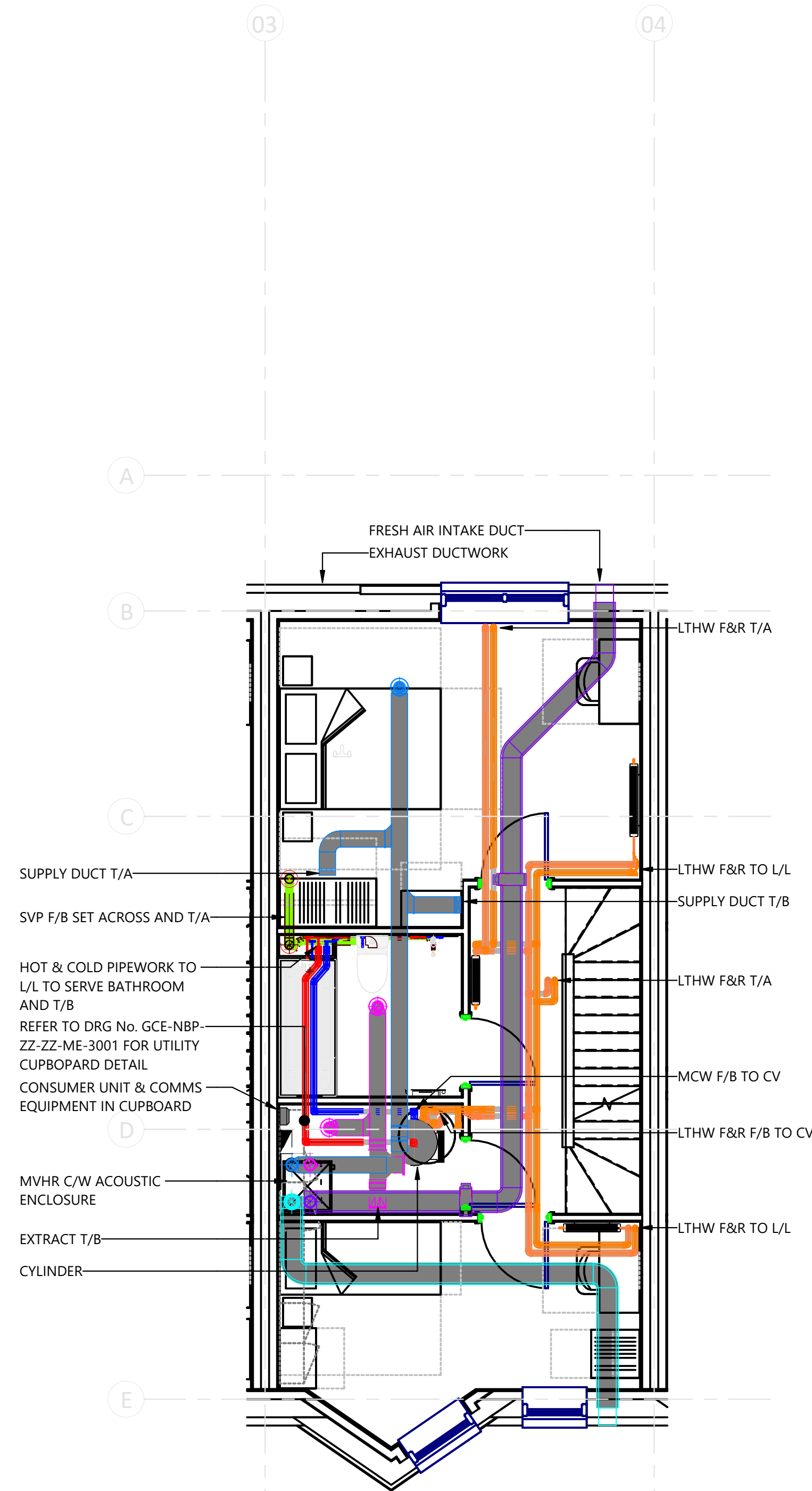
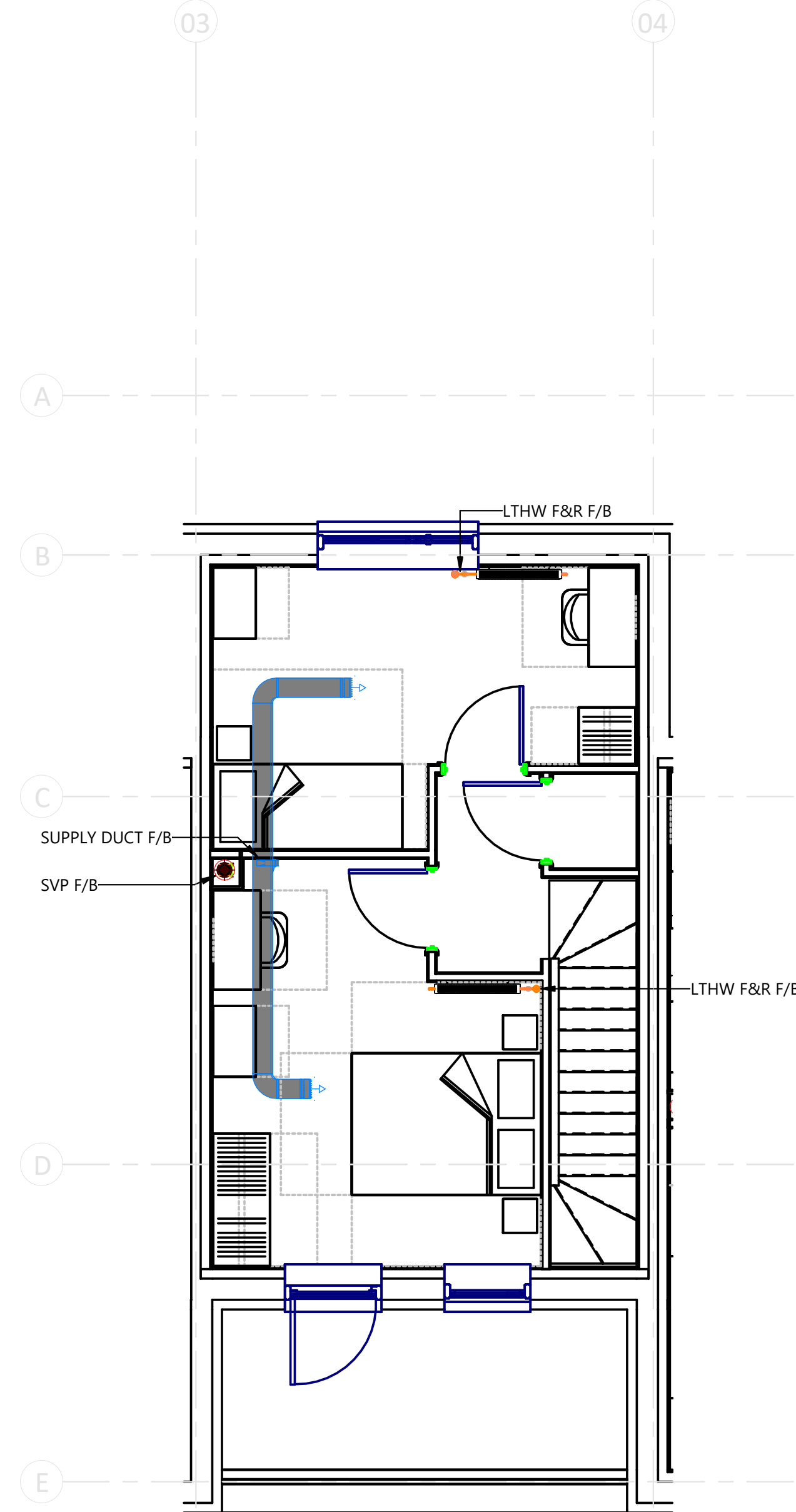


1 Unit Type 3 Level 0 Mechanical Services  
Layout  
1:50



2 Unit Type 3 Level 1 Mechanical Services  
Layout  
1:50



3 Unit Type 3 Level 2 Mechanical Services  
Layout  
1:50

- Notes:**
- THIS DRAWING SHALL BE READ IN CONJUNCTION WITH THE SPECIFICATION AND ALL OTHER ENGINEERING AND ARCHITECTURAL DRAWINGS.
  - EXACT POSITIONS AND MOUNTING HEIGHTS OF ALL EQUIPMENT TO BE AGREED WITH THE CLIENT AND ARCHITECT BEFORE THE INSTALLATION IS COMMENCED, AND INDICATED ACCURATELY ON THE CONTRACTOR'S DETAILED WORKING DRAWINGS.
  - ALLOWANCE SHALL BE MADE TO CO-ORDINATE THE MECHANICAL AND ELECTRICAL SERVICES TO THE FIXTURES AND FITTINGS SHOWN ON ARCHITECT'S DRAWING.
  - THIS DRAWING OUTLINES THE DESIGN INTENT FOR THE MECHANICAL AND ELECTRICAL SERVICES AND HAS BEEN PRODUCED TO ASSIST THE CONTRACTOR TENDER. THE DRAWING DOES NOT INDICATE ALL EQUIPMENT, ACCESSORIES, DEVICES ETC WHICH MAY BE REQUIRED FOR THE SATISFACTORY DESIGN, INSTALLATION AND COMPLETION OF THE PROJECT AND SHALL THEREFORE BE USED FOR GUIDANCE PURPOSES ONLY. THE CONTRACTOR SHALL BE RESPONSIBLE FOR INCLUDING EVERYTHING WITHIN HIS TENDER NECESSARY FOR SATISFACTORY COMPLETION.
  - REFER TO SCHEMATIC DRAWING GCE-NBP-ZZ-SC-M- FOR DETAILS OF EQUIPMENT AND SPECS.

- LEGEND**
- HTG - HEATING
  - HWS - HOT WATER SERVICE
  - MCWS - MAINS COLD WATER SERVICE
  - BHWS - BLENDED HOT WATER SERVICE
  - CWS - COLD WATER SERVICE
  - FD - FIRE DAMPER INSTALLED IN DUCT
  - VCD - VOLUME CONTROL DAMPER
  - SVP - SOIL VENT PIPE
  - WVP - WASTE VENT PIPE
  - WP - WASTE PIPE
  - SP - SOIL PIPE
  - RWP - RAIN WATER PIPE
  - WC - WATER CLOSET
  - WHB - WASH HAND BASIN
  - IV - ISOLATING VALVE
  - RV - REGULATING VALVE
  - NRV - NON RETURN VALVE
  - SC - STOP COCK
  - F - FLOW
  - R - RETURN
  - H/L - HIGH LEVEL
  - L/L - LOW LEVEL
  - F/A - FROM ABOVE
  - F/B - FROM BELOW
  - T/A - TO ABOVE
  - T/B - TO BELOW
  - CV - CEILING VOID
  - S - SUPPLY
  - E - EXTRACT
  - DE - DIRTY EXTRACT

Revision Number	Description	Date
P3	Preliminary Issue	04/06/24
P2	Comments Included	21/05/24
P1	Preliminary Issue	22/04/24

**Norman Bromley**  
Partnership LLP  
Consulting Engineers  
Ronnie's Wharf,  
Unit 2, 6 Lyons Crescent,  
Tonbridge,  
Kent,  
TN9 1EX  
Tel. No. 01732 773737  
Email. mail@normanbromley.co.uk

**Client**  
GLENMAN CONSTRUCTION LTD

**Project**  
GODWIN & CROWDALE  
ESTATE

**Title**  
UNIT TYPE 3  
MECHANICAL SERVICES  
LAYOUT

Drawn By LJ	Checked By NL	Date 04/22/24
Scale (@A1) 1:50	Project Number 2254	
Drawing Number GCE-NBP-ZZ-ZZ-DR-M-1002	Rev P3	