

Facia signage area above store window



Double sided street level sign

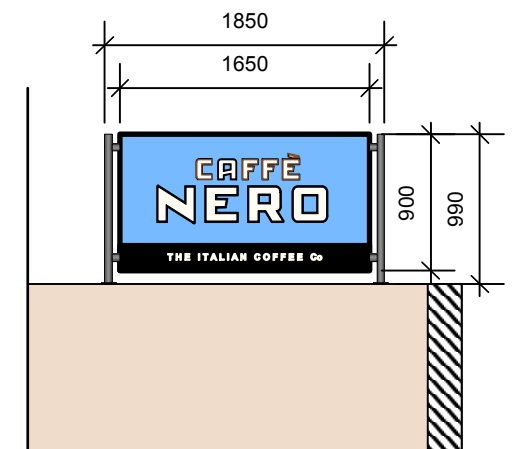
bedrock

The Hayloft
Blisworth Hill Business Park
Stoke Road, Blisworth
Northamptonshire NN7 3DB
T 01604 250002
info@bedrockdesign.co.uk

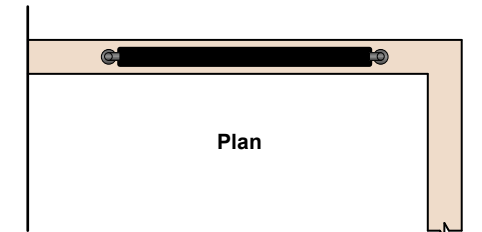
Client Caffe Nero	Scale NTS	Drawn by JB	Date 25/03/24	Rev N°	Description	Date Drawn by	Notes	CDM Regulations 2015 The principal designer as defined under CDM 2015 must be consulted before any action is taken as a result of the use of this drawing for any purpose, unless confirmed expressly in writing by Bedrock that we hold that duty.
Project Euston County Hotel	Drawing N° CN1055 - 601	Revision						
Description Proposed Shopfront	This drawing is the copyright of Bedrock Design Consultants Ltd. This drawing cannot be copied, reproduced, retained or disclosed to any unauthorised person without prior permission in writing from the designer.							



Illuminated Fascia Sign
Internally Illuminated via LED's Aluminium fabricated fascia panel. Fascia panel to be coated blue BS4800 20E51 with strapline in black. "CAFFÈ NERO" illuminated white letters with black keyline. "THE ITALIAN COFFEE...." To be 5mm 133 Ivory acrylic push-through. Folded backtray complete with white LED's, Refer to signage contractor drawings for details.



Elevation (stairwell)



Plan

Double sided street level sign (to replace existing sign)
New internally illuminated double sided sign mounted on bespoke powder coated metalwork (Col "Railings") Refer to Specialist contractors drawing for more details.

Window Manifestations
Frosted vinyl 'Caffe Nero Italian coffee company text applied to the inner face of glass. Clear film applied to the back to help prevent "picking" Refer to Stylo Graphics for details

Window Manifestation
Frosted vinyl "Coffee House"
Refer to Stylo Graphics for details

Existing entrance doors painted in F&B "Railings" No.31

bedrock

The Hayloft
Blisworth Hill Business Park
Stoke Road, Blisworth
Northamptonshire NN7 3DB
T 01604 250002
info@bedrockdesign.co.uk

Client Caffe Nero	Scale 1:50@A3	Drawn by JB	Date 25/03/24
Project Euston County Hotel	Drawing N° CN1055 - 602	Revision	
Description Proposed Shopfront	This drawing is the copyright of Bedrock Design Consultants Ltd. This drawing cannot be copied, reproduced, retained or disclosed to any unauthorised person without prior permission in writing from the designer.		

Rev N°	Description	Date	Drawn by

Notes
This drawing represents a performance guide upon which the contractor/subcontractor must base his/her working drawings & details. Include all necessary tolerances prior to manufacture and installation.

CDM Regulations 2015
The principal designer as defined under CDM 2015 must be consulted before any action is taken as a result of the use of this drawing for any purpose, unless confirmed expressly in writing by Bedrock that we hold that duty.