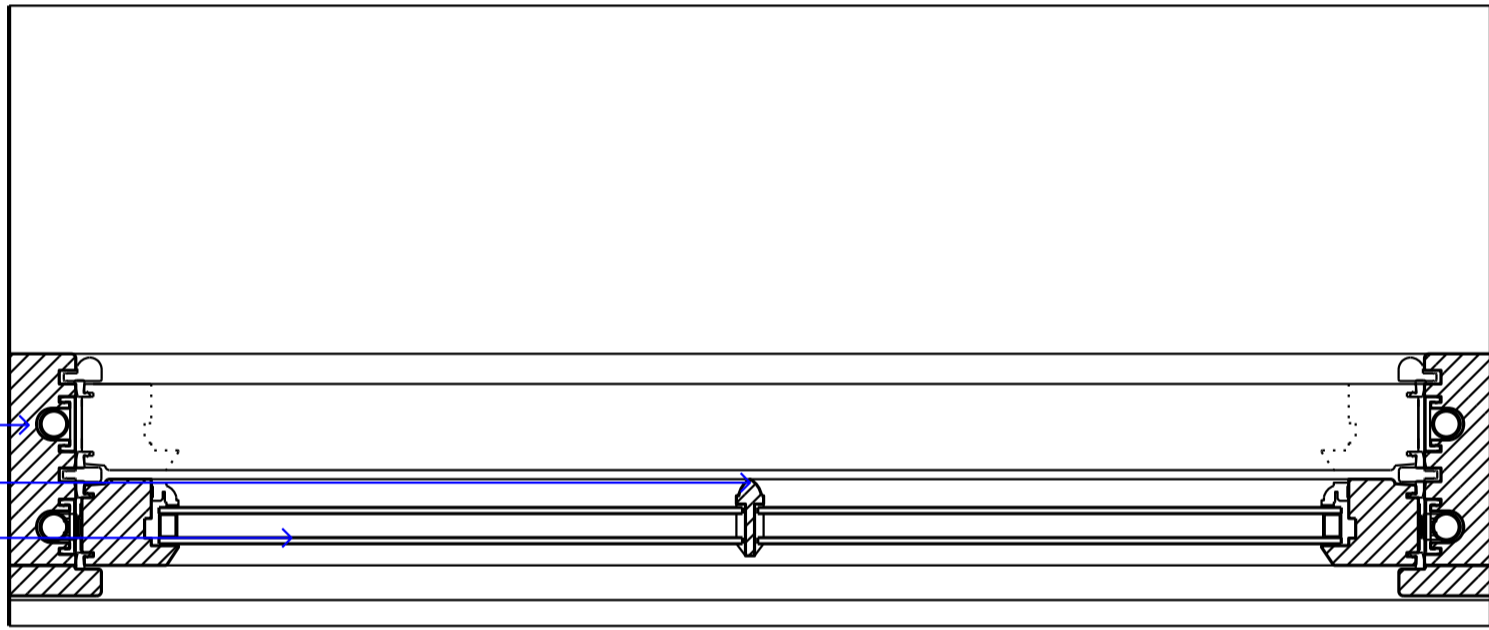
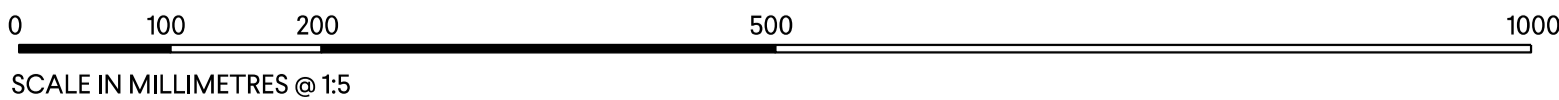


SASH STILE
VERTICAL THROUGH GLAZING BAR
SLIMLINE DOUBLE GLAZED WINDOW PANE



1
1:5
TYPICAL SASH WINDOW PLAN DETAIL



SOFFIT LINING
TOP RAIL

SASH FASTENER
MEETING RAIL

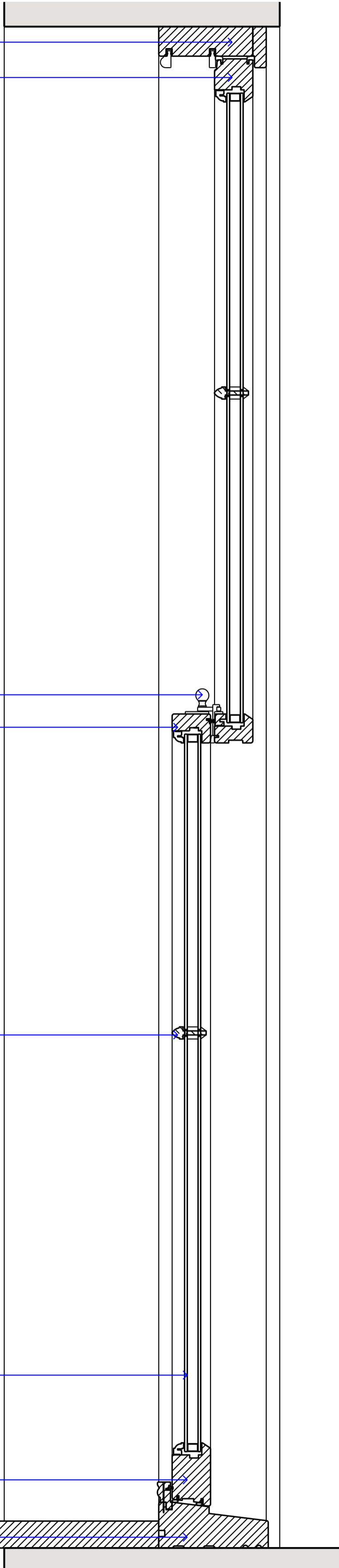
HORIZONTAL THROUGH GLAZING BAR

SLIMLINE DOUBLE GLAZED WINDOW PANE

BOTTOM RAIL

CILL

2
1:5
TYPICAL SASH WINDOW SECTION DETAIL



DO NOT SCALE OFF THIS DRAWING. DIMENSIONS, AREA AND LEVELS ARE ONLY APPROXIMATE AND SUBJECT TO SITE SURVEY. ALL DIMENSIONS TO BE CHECKED ON SITE. ANY DISCREPANCIES OR VARIATIONS TO BE REPORTED TO THE ARCHITECT BEFORE WORK COMMENCES.

THIS DRAWING TO BE READ IN CONJUNCTION WITH THE SPECIFICATION, WHERE PROVIDED, AND ALL RELEVANT CONSULTANTS DRAWINGS AND / OR SPECIALISTS DRAWINGS / DOCUMENTS AND ANY DISCREPANCIES OR VARIATIONS ARE TO BE REPORTED TO THE ARCHITECT BEFORE THE AFFECTED WORK COMMENCES.

THIS DRAWING IS PROTECTED BY COPYRIGHT, AND MUST NOT BE COPIED OR REPRODUCED WITHOUT THE WRITTEN CONSENT OF HOD ARCHITECTS LTD. NORTH POINTS SHOWN ARE INDICATIVE. ©

PLANNING

P1	04.06.24	PLANNING	OH
REV	DATE	NOTES	INIT.

PROJECT
16 WELL WALK NW3 1LD

DRAWING TITLE
TIMBER SASH WINDOW DETAILS

STATUS PLANNING			
SCALE @ A1 1:5	CREATED 17.05.2023	DRAWN OH	CHECKED GP
DRAWING NO. 0086-A-P-1401			ISSUE P1

0207 937 0007
INFO@HODARCHITECTS.CO.UK
13 PRINCE OF WALES TERRACE
KENSINGTON
LONDON W8 5PG

House of Design
Architects