

Site Boundary
Bay Study Location

30/05/24 Planning Revision B
28/05/24 Planning

PLANNING

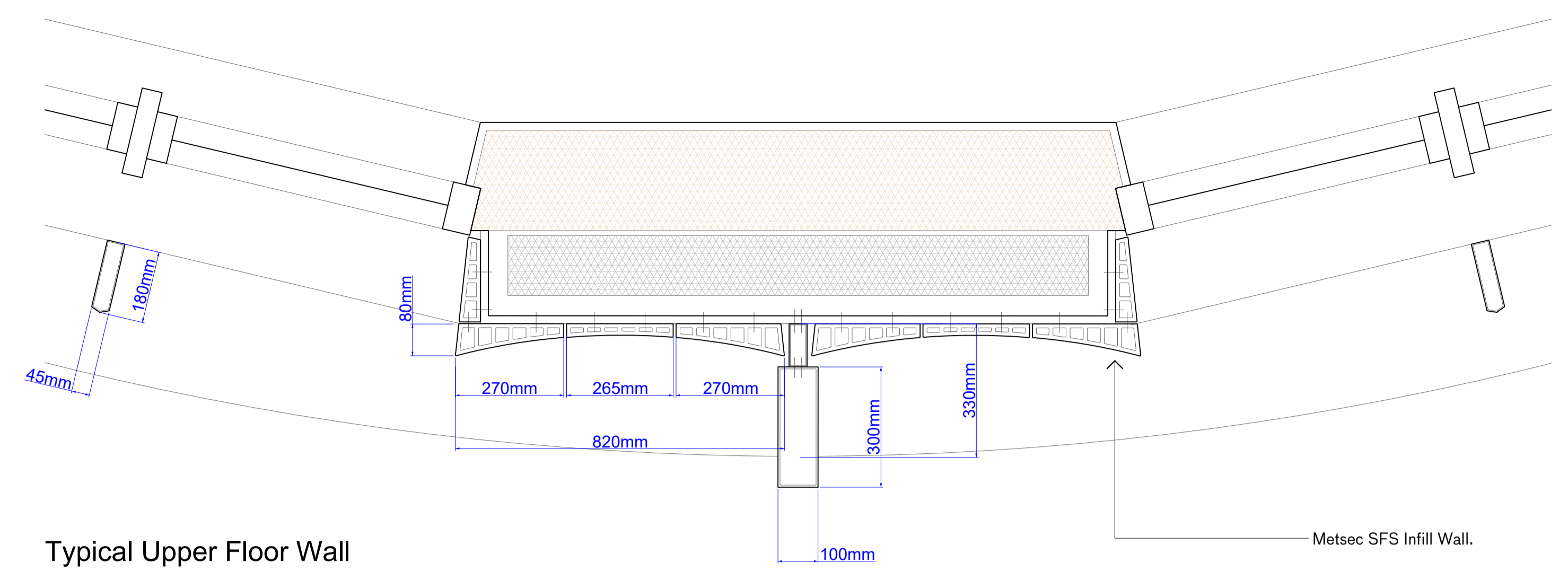
rev date check comments
DSDHA
357 Kennington Lane London SE11 5QY
T 020 7703 3555
F 020 7703 3890
E info@dshdha.co.uk
W www.dshdha.co.uk

project
100 Chalk Farm Road

drawing title
PBSA North Drum Bay Study Detail

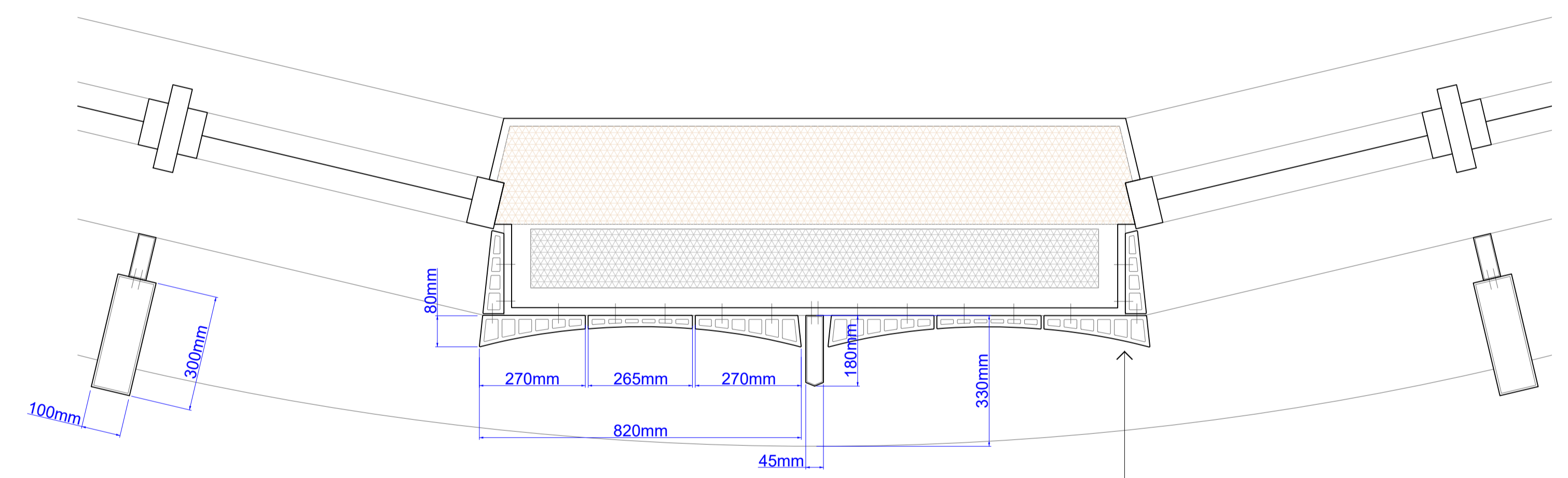
| drawn | size | date | scale |
|----------------|------|----------|----------|
| Fl | A1 | 28/05/24 | Varies |
| drawing number | | | revision |
| 356_P50.004 | | | B |

REPORT DISCREPANCIES DO NOT SCALE FROM THIS DRAWING CHECK DIMENSIONS ON SITE
USE LATEST REVISION CHECK DIMENSIONS ON SITE
COPYRIGHT DSDHA



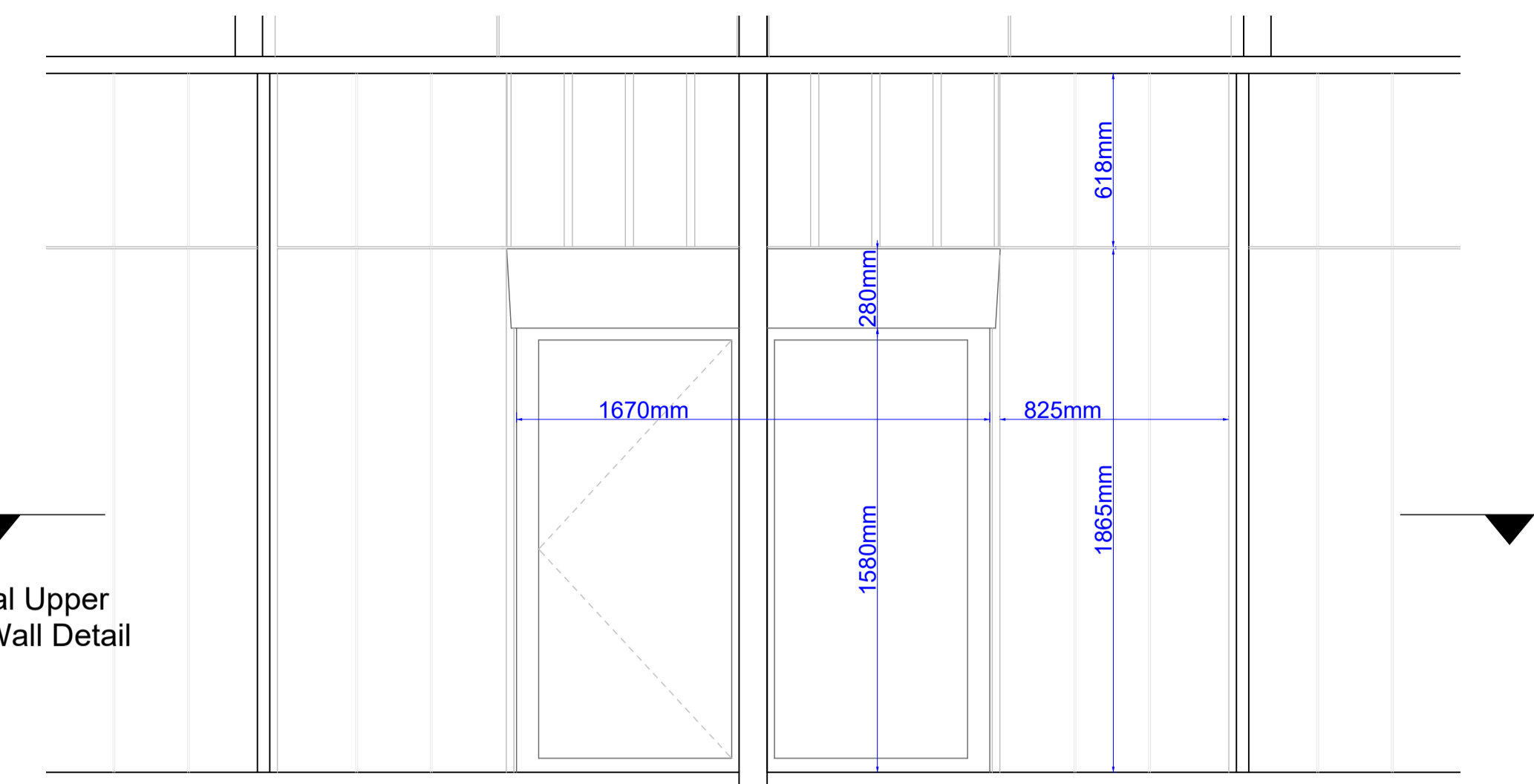
Typical Upper Floor Wall Design Intent Plan 1:10 at A1

- 3mm gypsum plaster skim
- 12.5mm plasterboard
- Vapour Barrier
- 200mm depth metsec steel framing
- 200mm Rockwool Flexi insulation
- 10mm cement-bonded particleboard
- 120mm Rockwool Rainscreen Duo insulation
- Breather membrane
- 50mm – galvanised steel framing
- 80mm – profiled terracotta panels

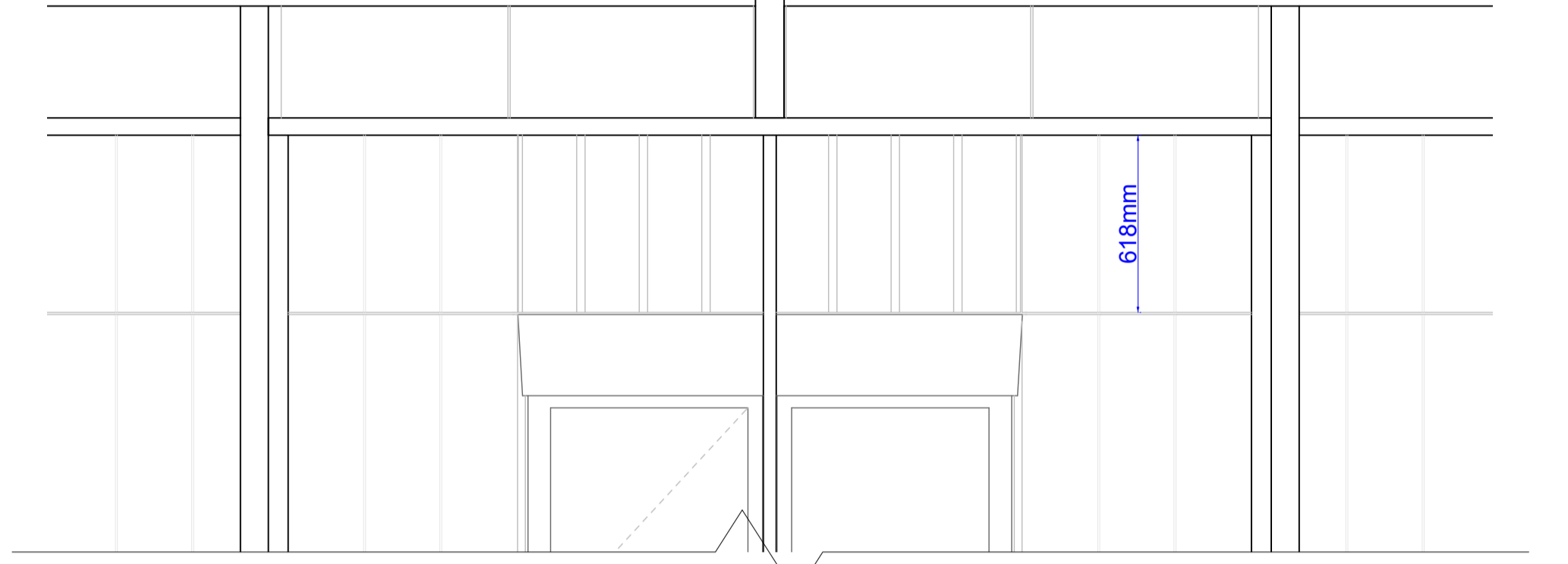


Typical Mid Floor Wall Design Intent Plan 1:10 at A1

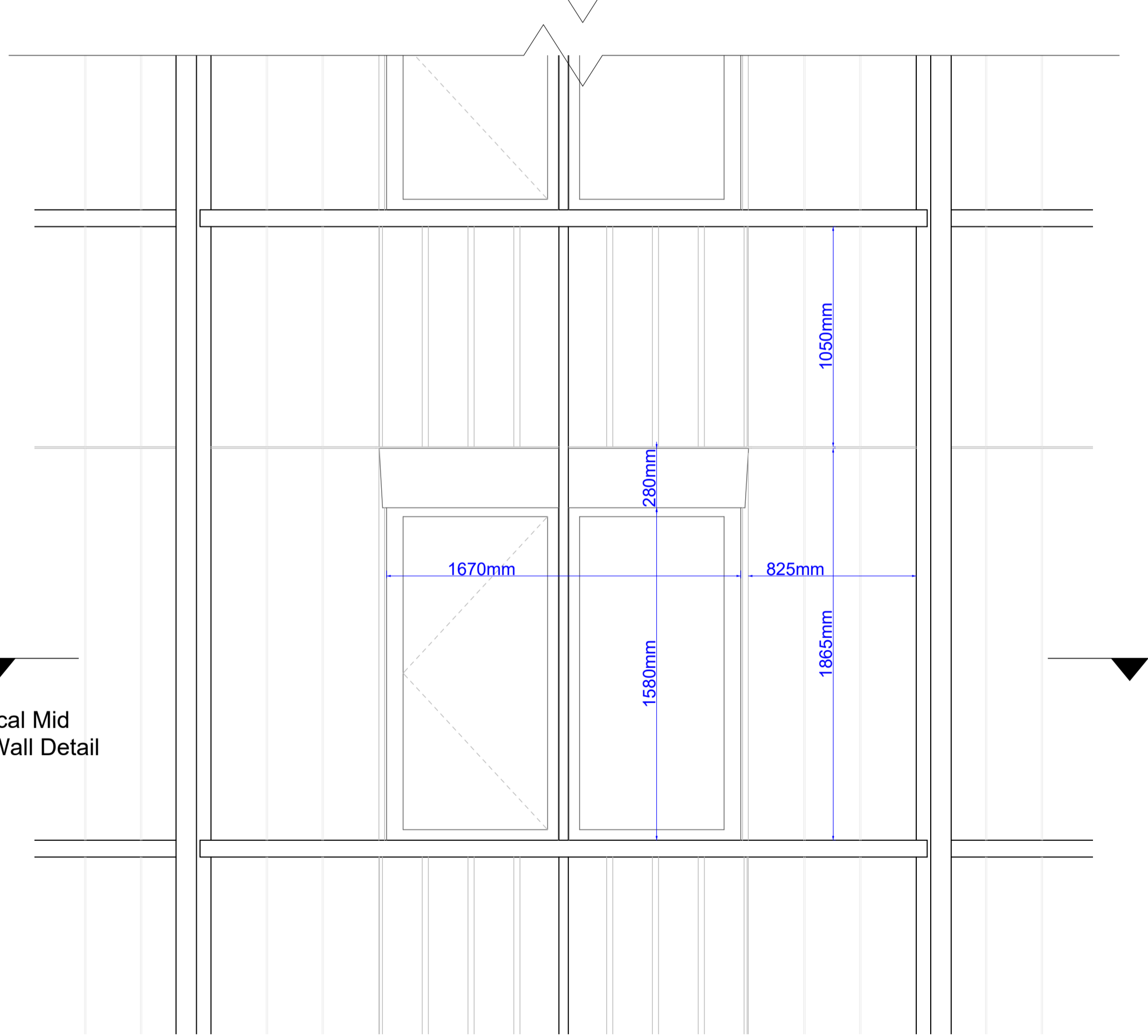
- 3mm gypsum plaster skim
- 12.5mm plasterboard
- Vapour Barrier
- 200mm depth metsec steel framing
- 200mm Rockwool Flexi insulation
- 10mm cement-bonded particleboard
- 120mm Rockwool Rainscreen Duo insulation
- Breather membrane
- 50mm – galvanised steel framing
- 80mm – profiled terracotta panels



Typical Upper Floor Wall Detail



Typical Mid Floor Wall Detail



Detail Elevation 1:20 at A1

PBSA North Drum Bay Study Detail