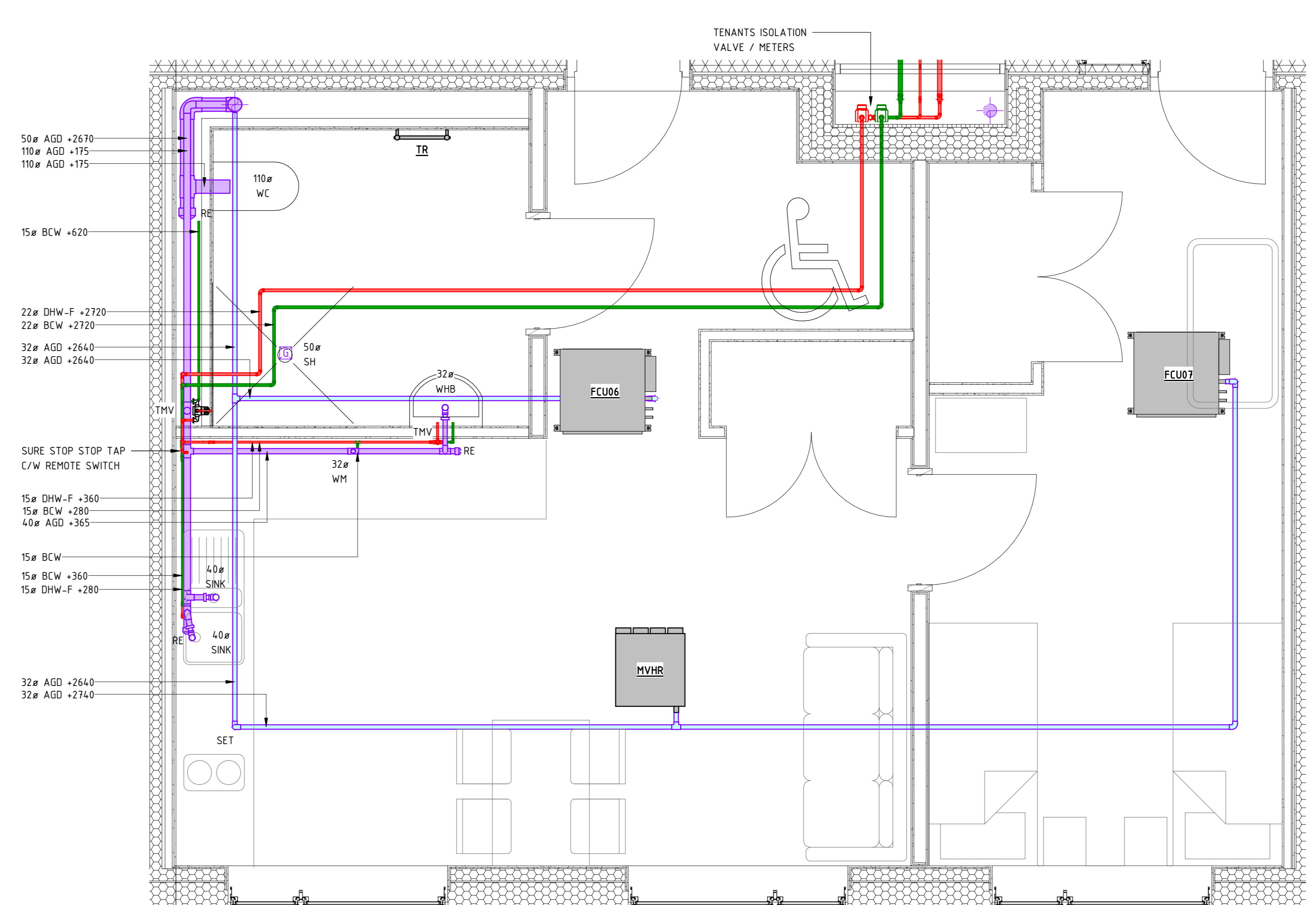
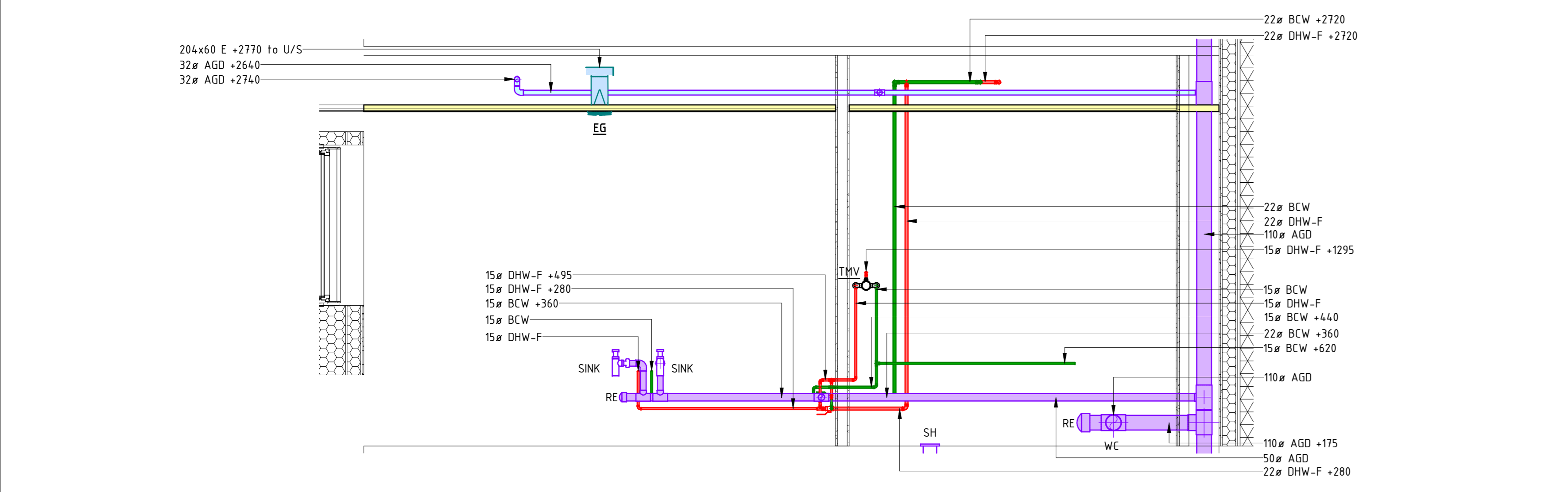


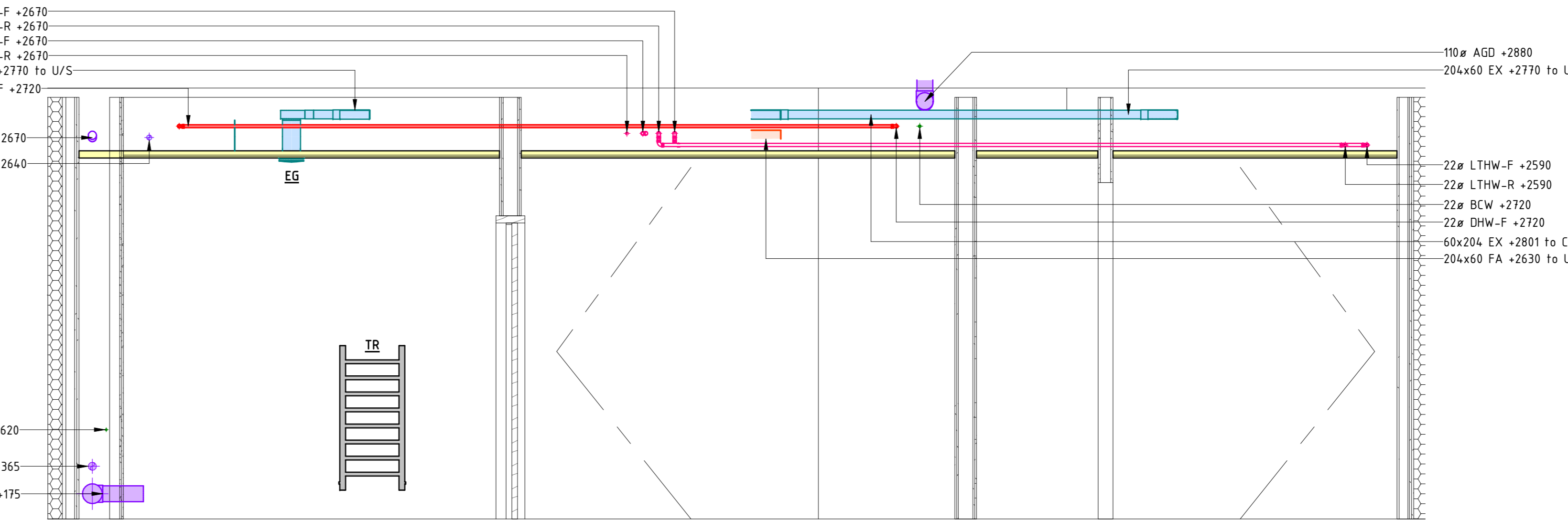
Floor Plan 00 - Typical Wheelchair Unit 1 - Ventilation & Heating  
SCALE 1: 25



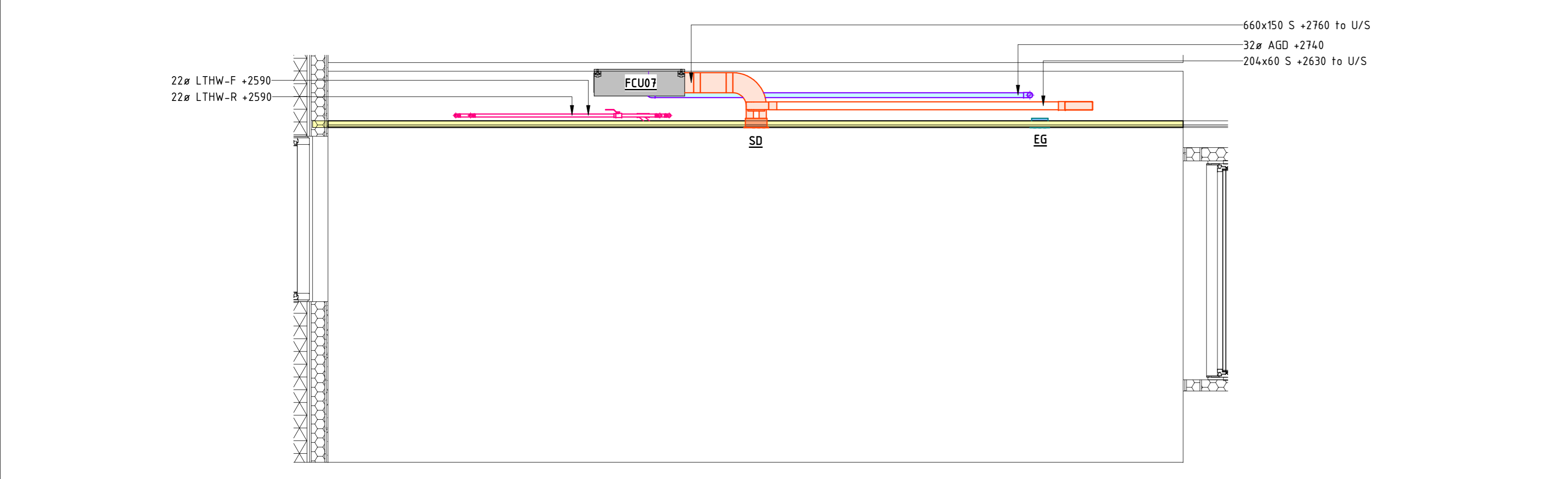
Floor Plan 00 - Typical Wheelchair Unit 1 - Domestics & Drainage  
SCALE 1: 25



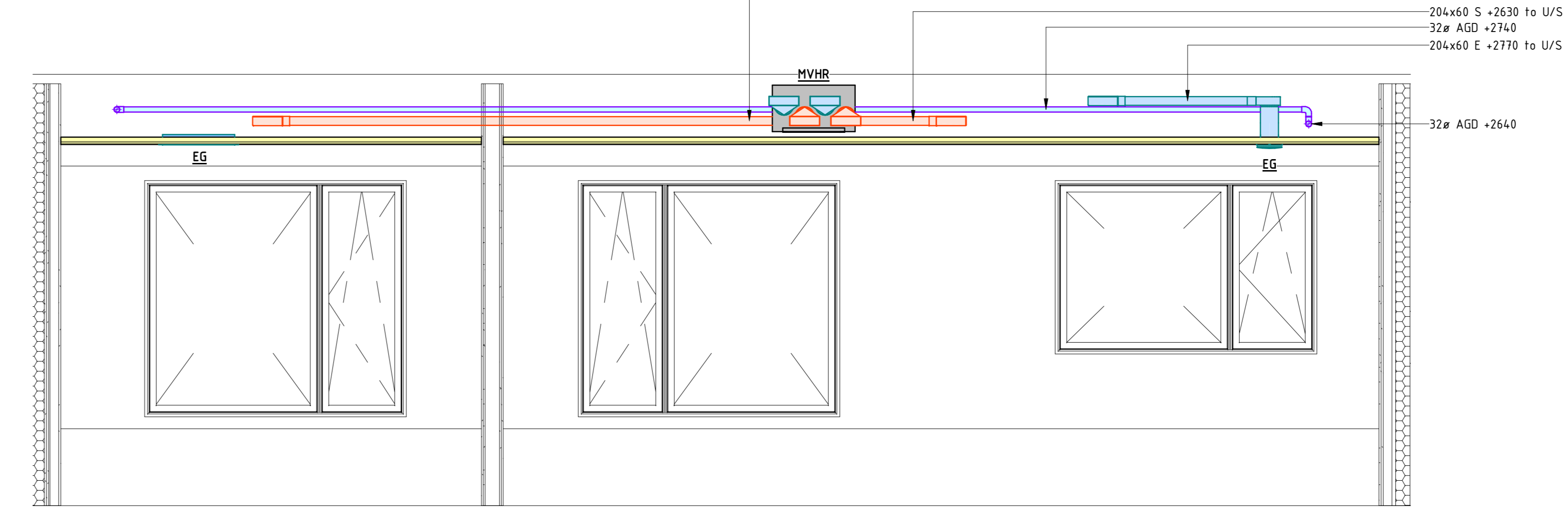
Typical Wheelchair Unit 1 Mechanical Services - Section - A-A  
SCALE 1: 25



Typical Wheelchair Unit 1 Mechanical Services - Section - B-B  
SCALE 1: 25



Typical Wheelchair Unit 1 Mechanical Services - Section - C-C  
SCALE 1: 25



Typical Wheelchair Unit 1 Mechanical Services - Section - D-D  
SCALE 1: 25

MECHANICAL APARTMENT LEGEND	
SYMBOL	DESCRIPTION
	SUPPLY DUCTWORK
	EXTRACT DUCTWORK
	TRANSFER GRILLE
	DOMESTIC HOT WATER PIPEWORK
	BOOSTED HOT WATER PIPEWORK
	LOW TEMPERATURE HOT WATER
	FOUL WATER PIPEWORK
	CONDENSATE PIPEWORK
	SHOWER FLOOR GULLY
	ELECTRIC HEATER
	WALL MOUNTED THERMOSTAT
	ELECTRIC UNDER FLOOR HEATING
	FIRE COLLAR

MECHANICAL APARTMENT ABBREVIATIONS	
AGD	ABOVE GROUND DRAINAGE
BCW	BOOSTED CALLED WATER
DHW	DOMESTIC HOT WATER
FC	FIRE COLLAR
FCU	FAN COIL UNIT
LTHW	LOW TEMPERATURE HOT WATER
MVHR	MECHANICAL VENTILATION HEAT RECOVERY
TR	TOWEL RAIL
UFH	UNDERFLOOR HEATING
WC	WATER CLOSET
WD	WASHER DRYER
WHB	WASH HAND BASIN

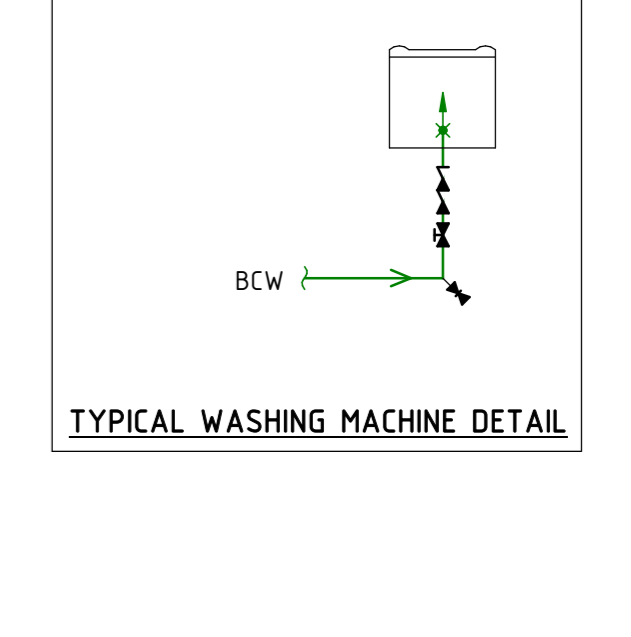
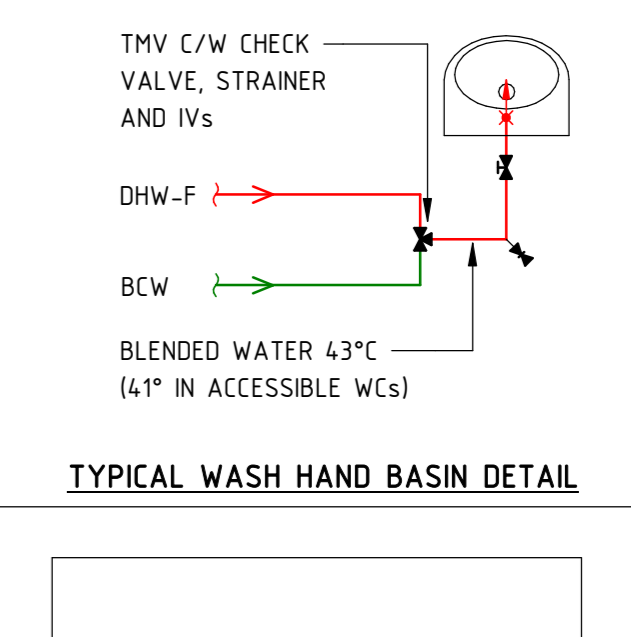
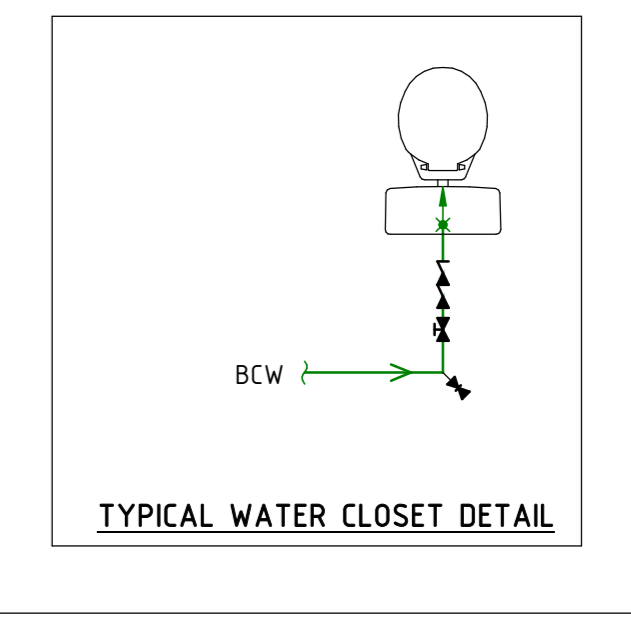
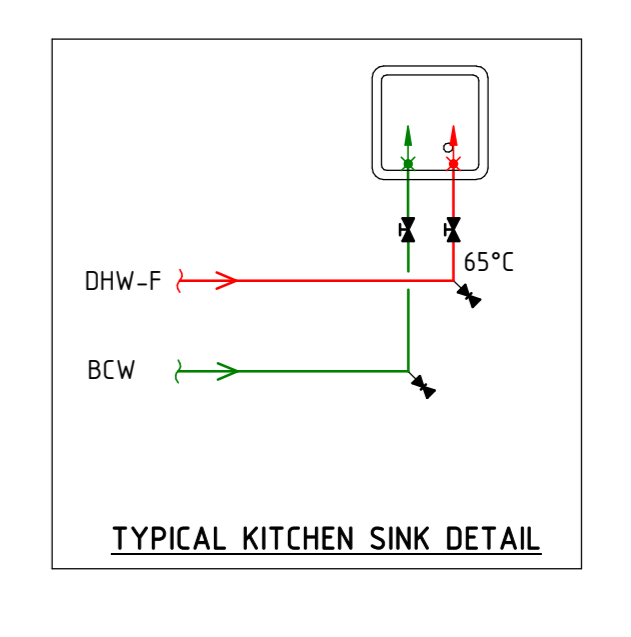
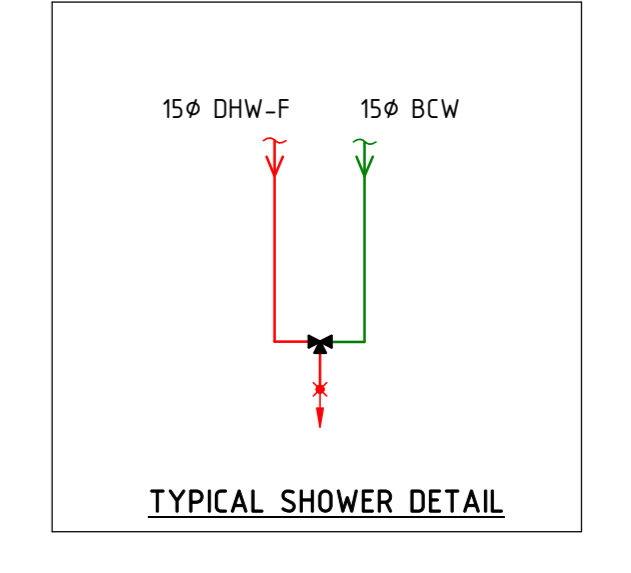
- GENERAL NOTES**
- FOR BUILDING SERVICES INFORMATION ONLY.
  - THIS DRAWING SHALL BE READ IN COLOUR.
  - THIS DRAWING SHALL BE READ IN CONJUNCTION WITH THE MECHANICAL SCHEDULES & ANY ASSOCIATED SPECIFICATION.
  - ALL BUILDING FABRIC PENETRATIONS SHALL BE SEALED IN ACCORDANCE TO THE BUILDING FABRIC MANUFACTURERS SPECIFICATION AND REQUIREMENTS TO ENSURE THE FIRE RESISTANCE AND/OR FIRE RETARDANT CHARACTERISTICS AND WEATHER RESISTANCE CHARACTERISTIC OF SUCH MATERIALS ARE NOT COMPROMISED. EXACT FIRE AND WEATHER SEALING DETAILS ARE A CONTRACTOR DESIGN ELEMENT.
  - FOR FINAL VALVE ARRANGEMENT REFER TO RELEVANT SERVICE SCHEMATIC.

- VENTILATION NOTES**
- ALL DUCTWORK SHALL CONFORM TO DW 144.
  - ACCESS DOORS SHALL BE PROVIDED IN ACCORDANCE WITH DW 144. POSITIONS TO BE DETERMINED & AGREED ON SITE.
  - ALL GRILLES & DIFFUSERS TO BE LOCATED CENTRALLY WITHIN CEILING TILES UNLESS OTHERWISE STATED.
  - A MAXIMUM OF 500mm OF FLEXIBLE DUCTWORK TO BE USED FOR FINAL CONNECTIONS INTO GRILLES.
  - ALL GRILLES & DIFFUSERS ARE TO HAVE SUITABLY SIZED PLENUM BOX TO SUIT SPIGOT DIMENSIONS.

- HEATING NOTES**
- THE CONTRACTOR SHALL MAKE ADEQUATE PROVISION FOR EXPANSION BELLOW & LOOPS WITH ALL ASSOCIATED BRACKETRY, GUIDES & ANCHORS. EXPANSION BELLOW TO BE CONFIRMED BY SPECIALIST.
  - ALL PIPEWORK PASSING THROUGH WALLS & FLOORS TO BE SLEAVED & FIRE STOPPED TO BS EN 1364-3. NON-NORMATIVE CONSTRUCTION TYPES SHOULD BE TO BS 476 AND SUBJECT TO BUILDING CONTROL APPROVAL. WHERE PASSING THROUGH FIRE WALLS/CAVITY BARRIERS/FLOORS SLEAVES TO BE FLUSH WITH SERVICES WHERE PIPEWORK IS EXPOSED.
  - ALTHOUGH NOT SHOWN, INCLUDE FOR AAVs AT ALL HIGH POINTS & DRAIN COCKS AT ALL LOW POINTS ON THE SYSTEM.
  - ALL PIPEWORK TO BE PRESSURE TESTED PRIOR TO THE APPLICATION OF INSULATION.

- DOMESTICS NOTES**
- ALL DEADLEGS ARE TO BE KEPT TO AN ABSOLUTE MINIMUM.
  - ALTHOUGH NOT SHOWN, INCLUDE FOR AUTOMATIC AIR VENTS AT ALL HIGH POINTS AND DRAIN COCKS AT ALL LOW POINTS ON THE SYSTEM.
  - THE INSTALLATION SHALL COMPLY WITH THE WATER SUPPLY (WATER FITTINGS) REGULATIONS 1999 IN EVERY RESPECT.
  - ALL DHW FLOW & RETURN PIPEWORK SHALL BE EQUIPPED WITH ALL VALVES REQUIRED TO BALANCE THE SYSTEM.
  - CHROME PLATED SCREW DRIVER OPERATED SERVICE VALVES TO BE INSTALLED TO ALL SANITARY APPLIANCES. NO VALVES TO BE INSTALLED IN BOXING.

- DRAINAGE NOTES**
- ALL ABOVE GROUND DRAINAGE TO BE INSTALLED IN ACCORDANCE WITH BUILDING REGULATIONS APPROVED DOCUMENT H & BS EN 12056-PARTS 1-5 2000.
  - ACCESS PANEL TO BE INSTALLED IN ACCORDANCE WITH THE REQUIREMENTS OF BS EN 12056-PARTS 1-5 2000.
  - ALL DRAIN POINT CONNECTIONS INCLUDING SERVICE VALVES ARE TO BE LEFT BY THE UNDERGROUND DRAINAGE INSTALLER.
  - ALL SOIL FLOATS ARE TO BE INSTALLED USING A PROPRIETARY WC MANIFOLD SYSTEM & LAID TO A FALL OF 1 DEGREE (17mm DROP PER METRE RUN).
  - ALL SEALED TRAPS TO BE A MINIMUM OF 75mm DEEP.
  - CONDENSATE FROM AC UNITS & HRU DRAINS TO BE RUN TO NEAREST SUITABLE FOUL DRAIN LOCATION TO BE C/W SELF SEALING TRAP.
  - EXPANSION COLLARS ARE TO BE INSTALLED AS REQUIRED BY PIPEWORK MANUFACTURER.



PO1	STAGE 4 - ISSUED FOR COMMENT	20.11.2023
Rev	Description	Date
1		
2		
3		
4		
5		
6		
7		
8		
9		
10		
11		
12		
13		
14		
15		
16		
17		
18		
19		
20		
21		
22		
23		
24		
25		
26		
27		
28		
29		
30		
31		
32		
33		
34		
35		
36		
37		
38		
39		
40		
41		
42		
43		
44		
45		
46		
47		
48		
49		
50		
51		
52		
53		
54		
55		
56		
57		
58		
59		
60		
61		
62		
63		
64		
65		
66		
67		
68		
69		
70		
71		
72		
73		
74		
75		
76		
77		
78		
79		
80		
81		
82		
83		
84		
85		
86		
87		
88		
89		
90		
91		
92		
93		
94		
95		
96		
97		
98		
99		
100		

Client: **MORGAN SINDALL**

Project: **STAGE 4**

Location: **CAMDEN HOSTELS CHESTER ROAD**

Title: **TYPICAL WHEELCHAIR UNIT 1 MECHANICAL SERVICES**

DRG:	DRG No:	DRG Date:
E.Thornton	A.Moss	
REV:	REV No:	REV Date:
A.Hirst	M.Burkinshaw	
UNCLASSIFIED	20.11.2023	AO 1:25
123007-AGL-CH-ZZ-DR-M-4104	53	PO1