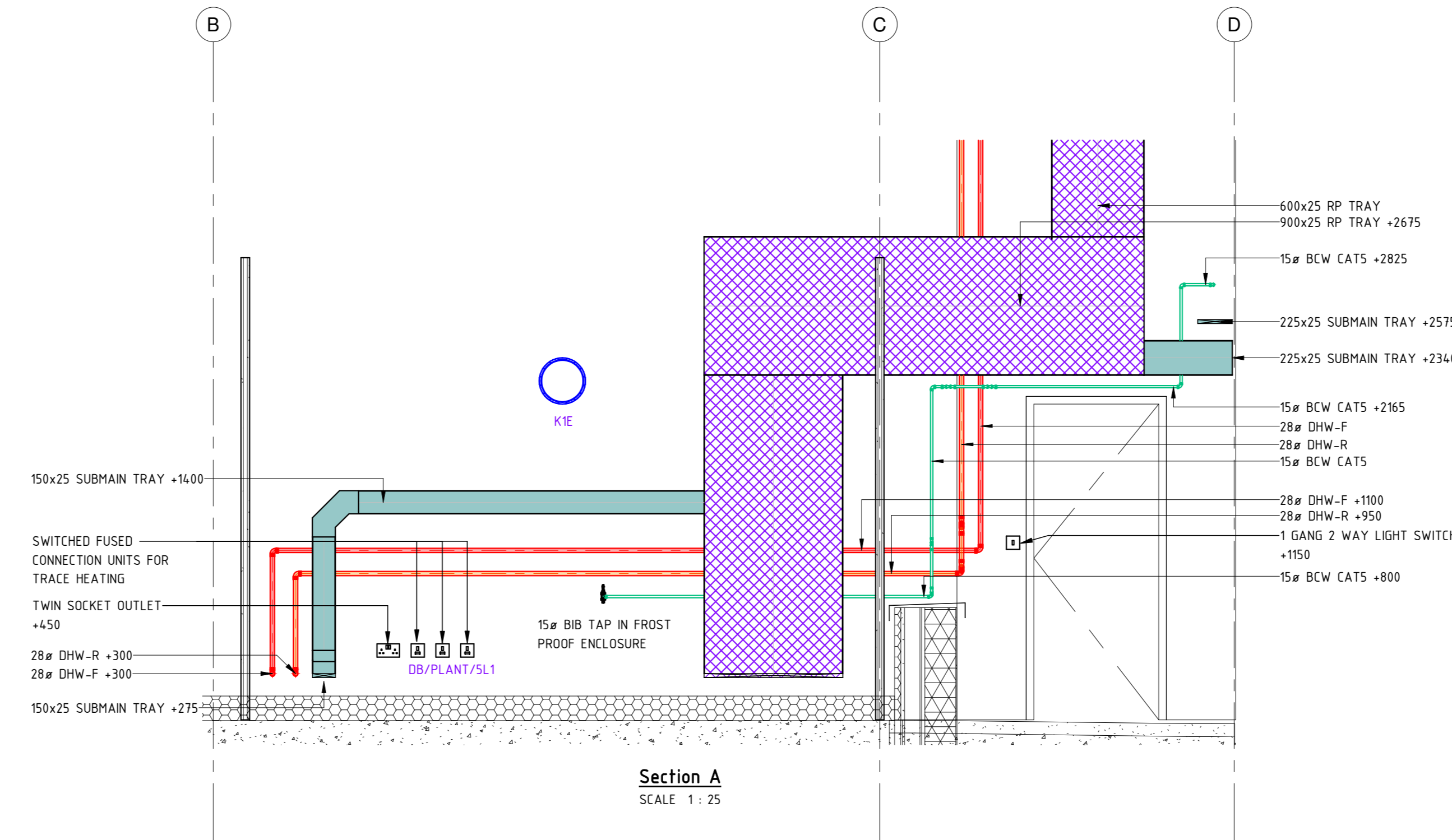
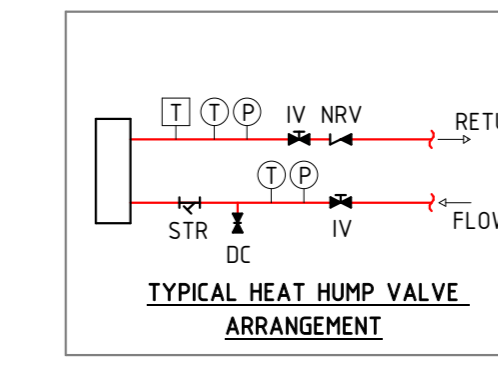


4th Floor Plantroom



Section A
SCALE 1:25

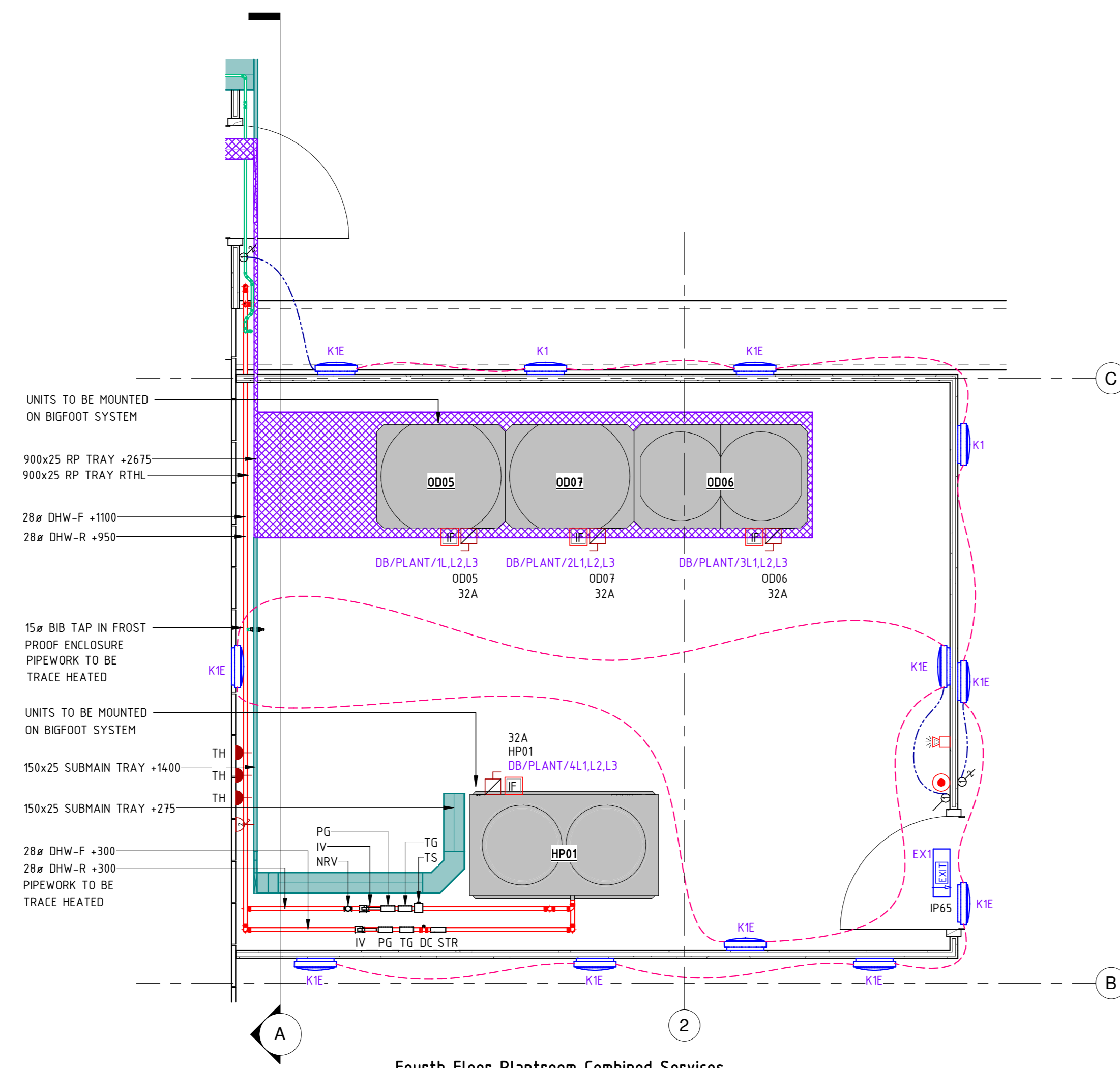


SYMBOL	DESCRIPTION
[Red line]	DOMESTIC HOT WATER PIPEWORK
[Blue line]	BOOSTED COLD WATER PIPEWORK
[Green line]	BOOSTED COLD WATER CAT 5 PIPEWORK
[Purple line]	FOUL WATER PIPEWORK
[Hatched box]	REFRIGERANT PIPEWORK TRAY
[Pink box]	PV CABLE TRAY
[Orange box]	FIRS/FIBRE BASKET
[Twin socket symbol]	TWIN SOCKET OUTLET
[Wall mounted symbol]	WALL MOUNTED SOLINDER/REACTION
[Call point symbol]	MANUAL CALL POINT
[Fire alarm symbol]	FIRE ALARM INTERFACE
[Isolator symbol]	THREE PHASE & NEUTRAL ISOLATOR

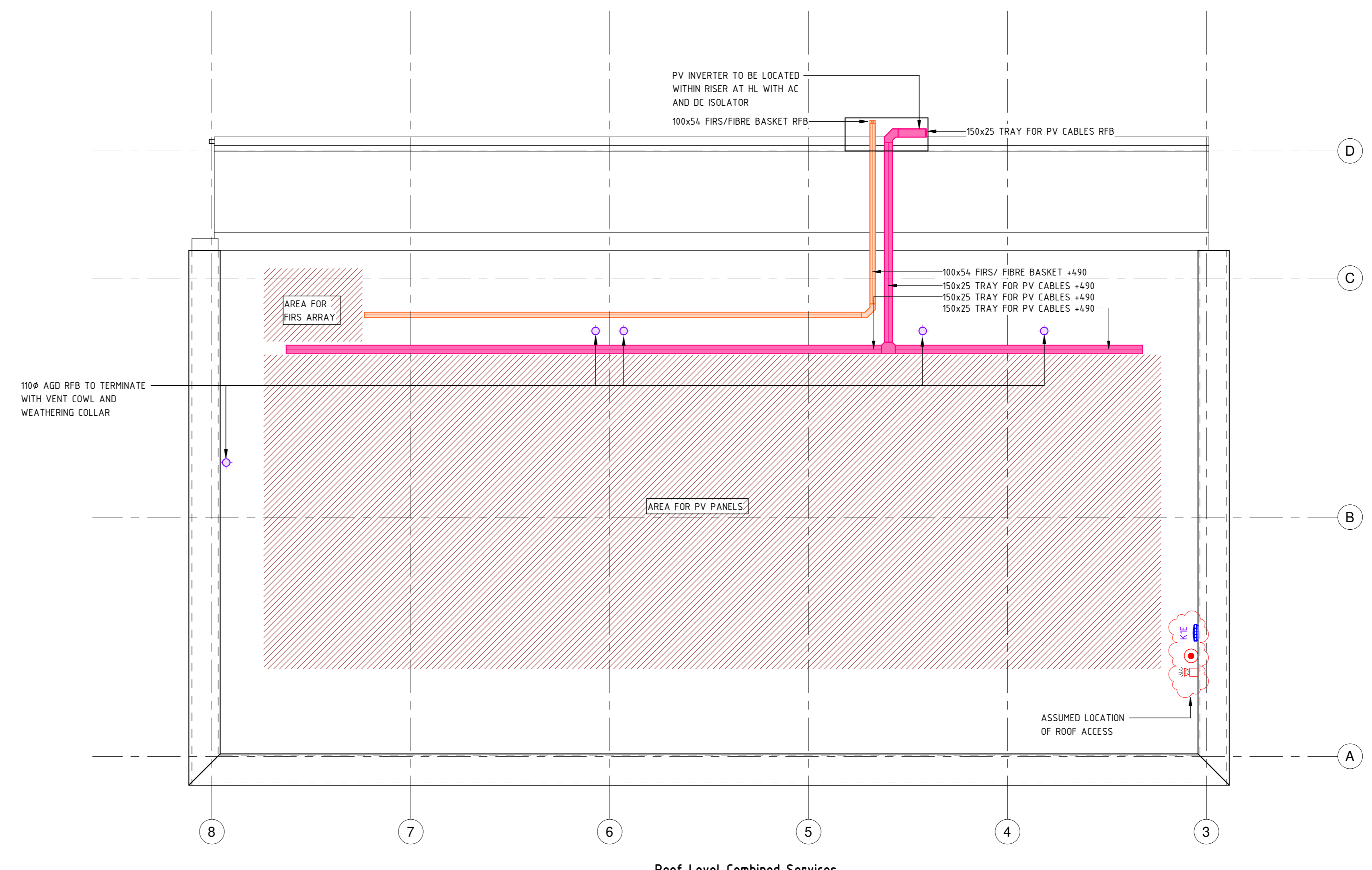
ABBREVIATIONS	
15#	PIPE SIZE
AAV	AUTOMATIC AIR VENT
AGD	ABOVE GROUND DRAINAGE
DC	DRAIN COCK
DPA	DROPS FROM ABOVE
DTB	DROPS TO BELOW
DTLL	DROPS TO LOW LEVEL
F&R	FLOW & RETURN
IV	ISOLATION VALVE
NRV	NON RETURN VALVE
OD	AIR CONDITIONING OUTDOOR UNIT
PG	PRESSURE GAUGE
RFB	RISES FROM BELOW
RTA	RISES TO ABOVE
STR	STRAINER
TG	TEMPERATURE GAUGE
TH	TRACE HEATING
TS	TEMPERATURE SENSOR

REFERENCES	
HP01	HEAT PUMP
OD01	OUTDOOR UNIT

- NOTES**
- FOR BUILDING SERVICES INFORMATION ONLY.
 - THIS DRAWING SHALL BE READ IN COLOUR.
 - THIS DRAWING SHALL BE READ IN CONJUNCTION WITH THE MECHANICAL SCHEDULES, ELECTRICAL SCHEDULES & ANY ASSOCIATED SPECIFICATION.
 - ALL BUILDING FABRIC PENETRATIONS SHALL BE SEALED IN ACCORDANCE TO THE BUILDING FABRIC MANUFACTURERS SPECIFICATION AND REQUIREMENTS TO ENSURE THE FIRE RESISTANCE AND/OR FIRE-RETARDANT CHARACTERISTICS AND WEATHER RESISTANCE CHARACTERISTIC OF SUCH MATERIALS ARE NOT COMPROMISED. EXACT FIRE AND WEATHER SEALING DETAILS ARE A CONTRACTOR DESIGN ELEMENT.
 - FOR FINAL VALVE ARRANGEMENT REFER TO RELEVANT SERVICE SCHEMATIC.
 - ALL EXTERNAL ACCESSORIES TO BE IP65 RATED.
 - AERIAL ARRAY LOCATION TO BE CONFIRMED BY FIRS SPECIALIST.
 - ALL SERVICES PENETRATING ROOF SLAB TO BE APPROPRIATELY WEATHERPROOFED.
 - THE CONTRACTOR WILL MAKE ADEQUATE PROVISION FOR EXPANSION BELLOWS & LOOPS WITH ALL ASSOCIATED BRACKETRY, GUIDES & ANCHORS. EXPANSION BELLOWS TO BE CONFIRMED BY SPECIALIST.
 - ALL DEADLEGS ARE TO BE KEPT TO AN ABSOLUTE MINIMUM.
 - ALTHOUGH NOT SHOWN, INCLUDE FOR AUTOMATIC AIR VENTS AT ALL HIGH POINTS AND DRAIN COCKS AT ALL LOW POINTS ON THE SYSTEM.
 - THE INSTALLATION SHALL COMPLY WITH THE WATER SUPPLY (WATER FITTINGS) REGULATIONS 1999 IN EVERY RESPECT.
 - ALL MAIN PLANT SHALL BE INSTALLED WITH ISOLATING VALVES & UNIONS.
 - ALL DHW FLOW & RETURN PIPEWORK SHALL BE EQUIPPED WITH ALL VALVES REQUIRED TO BALANCE THE SYSTEM.
 - ALL PIPEWORK PASSING THROUGH WALLS & FLOORS TO BE SLEEVED & FIRE STOPPED TO BS EN 1366-3, NON-NORMATIVE CONSTRUCTION TYPES SHOULD BE TO BS 476 AND SUBJECT TO BUILDING CONTROL APPROVAL WHERE PASSING THROUGH FIRE WALLS/CAVITY BARRIERS/FLOORS. SLEEVES TO BE FLUSH WITH SERVICES WHERE PIPEWORK IS EXPOSED.
 - ALL PIPEWORK TO BE FLUSHED & STERILIZED TO BS EN 806 & BS 6558.
 - ALL PIPEWORK TO BE PRESSURE TESTED PRIOR TO THE APPLICATION OF INSULATION.
 - FOR FINAL VALVE ARRANGEMENT REFER TO RELEVANT SERVICE SCHEMATIC.
 - ALL BUILDING FABRIC PENETRATIONS SHALL BE SEALED IN ACCORDANCE TO THE BUILDING FABRIC MANUFACTURERS SPECIFICATION AND REQUIREMENTS TO ENSURE THE FIRE RESISTANCE AND/OR FIRE-RETARDANT CHARACTERISTICS AND WEATHER RESISTANCE CHARACTERISTIC OF SUCH MATERIALS ARE NOT COMPROMISED. EXACT FIRE AND WEATHER SEALING DETAILS ARE A CONTRACTOR DESIGN ELEMENT.



Fourth Floor Plantroom Combined Services
SCALE 1:25



Roof Level Combined Services
SCALE 1:50

<p>Anderson Green www.andersongreen.co.uk</p>	<p>Nottingham 0115 973 4141 Sheffield 0114 243 3913 London 0203 831 4941 Leeds 0113 243 2872</p>
<p>MORGAN SINDALL</p>	
<p>STAGE 4</p>	
<p>CAMDEN HOSTELS CAMDEN ROAD</p>	
<p>ROOF LEVEL CO-ORDINATED SERVICES</p>	
<p>Prep: C.Brook Rev: A.Hirst</p>	<p>Of the: V.Grimley Rev: M.Burkinshaw</p>
<p>Security Classification: UNCLASSIFIED Project No: 123007-AGL-CA-RL-DR-N-4101</p>	<p>Drawn: M.Burkinshaw Date: 04.12.2023 Rev: A0 Scale: 1:50</p>
<p>123007-AGL-CA-RL-DR-N-4101 S3 P01</p>	