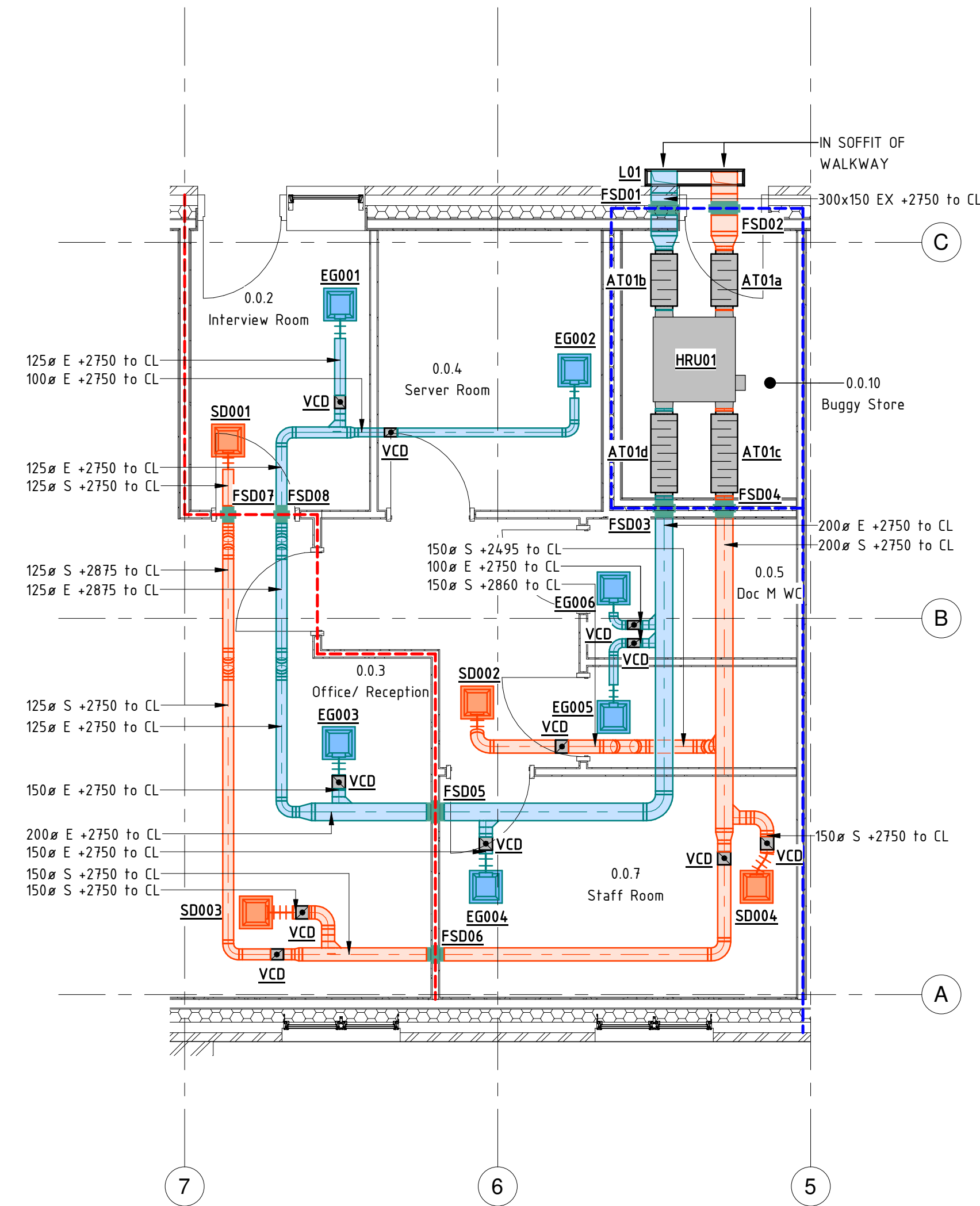


THIS DRAWING IS BASED ON:

123007-WGI-ZZ-M3-003 - Architects Model



**LEGEND**

SYMBOL	DESCRIPTION
	SUPPLY DUCTWORK
	EXTRACT DUCTWORK
	ATTENUATOR
	DUCT RISES/DROPS
	VOLUME CONTROL DAMPER
	FIRE DAMPER (ACCESS PANEL TO BE INSTALLED ADJACENT DAMPER)
	COMBINED FIRE & SMOKE DAMPER (ACCESS PANEL TO BE INSTALLED ADJACENT DAMPER)
	GRILLE/DIFFUSER
	30 MINUTE RATED FIREWALL
	60 MINUTE RATED FIREWALL

**REFERENCES**

AT001	ATTENUATOR
EG001	EXTRACT GRILLE
FSD001	SMOKE-ACTIVATED FIRE DAMPER
HRU01	HEAT RECOVERY UNIT
L001	LOUVRE
SD001	SUPPLY DIFFUSER
SF001	SUPPLY FAN
TRG001	TRANSFER GRILLE

**ABBREVIATIONS**

+3000 CL	DENOTES HEIGHT TO CENTRE OF DUCT
+3000 U/S	DENOTES HEIGHT TO THE BOTTOM OF
200# E	EXTRACT AIR DUCTWORK
200# S	SUPPLY AIR DUCTWORK
BOD	BOTTOM OF DUCT
CL	CENTRE LINE
CM	CEILING MOUNTED
CV	CEILING VOID
DFA	DROPS FROM ABOVE
DTB	DROPS TO BELOW
DTLL	DROPS TO LOW LEVEL
FLL	FINISHED FLOOR LEVEL
HL	HIGH LEVEL
LL	LOW LEVEL
RFB	RISES FROM BELOW
RFL	RISES FROM LOW LEVEL
RTA	RISES TO ABOVE
RV	ROOF VOID
SET	DENOTES CHANGE IN LEVEL FROM FFL TO U/S
VCD	VOLUME CONTROL DAMPER

**NOTES**

- FOR BUILDING SERVICES INFORMATION ONLY.
- THIS DRAWING SHALL BE READ IN COLOUR.
- THIS DRAWING SHALL BE READ IN CONJUNCTION WITH THE MECHANICAL SCHEDULES & ANY ASSOCIATED SPECIFICATION.
- ALL DUCTWORK SHALL CONFORM TO DW 144.
- ACCESS DOORS SHALL BE PROVIDED IN ACCORDANCE WITH DW 144. POSITIONS TO BE DETERMINED & AGREED ON SITE.
- ALL GRILLES & DIFFUSERS TO BE LOCATED CENTRALLY WITHIN CEILING TILES UNLESS OTHERWISE STATED.
- SMOKE/FIRE DAMPERS & ACCESS PANELS TO BE INSTALLED WHERE DUCTWORK PASSES THROUGH FIRE WALLS/DOORS. ENSURE ACOUSTIC PERFORMANCE IS NOT AFFECTED.
- FIRE/SMOKE DAMPERS SHALL BE CONNECTED TO DUCTWORK VIA FLEXIBLE OR BREAK-AWAY JOINTS INCORPORATING MATERIALS, FIXINGS, CLAMPS ETC. THAT ARE MANUFACTURED FROM A NON-FIRE-RESISTANT MATERIAL WITH A LOW MELTING POINT SUCH AS ALUMINIUM, PLASTIC ETC. TO ALLOW THE COLLAPSE OF THE DUCTWORK IN A FIRE CONDITION WITHOUT DISTURBING THE INTEGRITY OF THE DAMPER(S) IN ACCORDANCE WITH BESA DW/145
- A MAXIMUM OF 900mm OF FLEXIBLE DUCTWORK TO BE USED FOR FINAL CONNECTIONS INTO GRILLES.
- ALL GRILLES & DIFFUSERS ARE TO HAVE SUITABLY SIZED PLENUM BOX TO SUIT SPIGOT DIMENSIONS.
- ALL (EXCEPT KITCHEN EXTRACT SYSTEM) SQUARE 90° BENDS ARE TO INCORPORATE TURNING VANES.
- ALL BUILDING FABRIC PENETRATIONS SHALL BE SEALED IN ACCORDANCE TO THE BUILDING FABRIC MANUFACTURERS SPECIFICATION AND REQUIREMENTS TO ENSURE THE FIRE RESISTANCE AND/OR FIRE-RETARDANT CHARACTERISTIC OF SUCH MATERIALS ARE NOT COMPROMISED. EXACT FIRE AND WEATHER SEALING DETAILS ARE A CONTRACTOR DESIGN ELEMENT.


P01	STAGE 4 - ISSUED FOR COMMENT	04.12.2023
Rev.	Description	Date

**Anderson Green**  
 building services consultants  
 www.andersongreen.co.uk

Nottingham 0115 975 4141  
 Sheffield 0114 243 5913  
 London 0207 831 6941  
 Leeds 0113 243 2672

Client:

**MORGAN SINDALL**

Stage: **STAGE 4**

Project: **CAMDEN HOSTELS  
CAMDEN ROAD**

Title: **GROUND FLOOR  
LANDLORDS  
HEATING & COOLING**

Eng:	E.Thornton	QA Eng:	A.Moss
BM Tech:	A.Hirst	CA BM:	M.Burkinshaw
Security Classification:	UNCLASSIFIED	Drawing Start Date:	04.12.2023
Project No. - Originator - Function - Level - Room - Discipline - Drawing No.:	123007-AGL-CA-GF-DR-M-1101	Scale:	A1 1:50
Status:	S3	Revision:	P01