



## **Eco Green Group**

**Unit 3 Rays Barn Farm Ingatestone, Essex**

**CM4 9EH**

**Project Name: Charlotte Street**

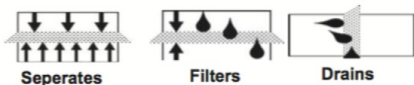
### **Technical Submission**

#### **EGR Sedum Blanket System**

- EGR 20mm Drainage Board
- EGR Filter Fleece
- EGR Growing Medium
- EGR Sedum Blanket
- EGR 20-40mm Cobbles

**Installers and Manufacturers: Eco Green Group**

Prepared by	: Kim Wilkinson
Date	: 20/05/24
Rev	: 00



## Product Data Sheet



# Drainage Board with Filter Fleece

**Product code:** EGR DBR20 **Reference Standard:** EN 13252, CE

## Description

A rigid and durable 20mm drainage board multi-functionally designed to act as both a drainage layer and for water-retention. EGR DBR20 allows for excess water to drain away therefore preventing the water logging of the substrate. The reservoir properties allow the water storage cells to retain additional water that can be diffused to the plants during prolonged dry periods (more than six weeks without rain). EGR DBR20 performs in line with requirement set forth by German FLL Guidelines and The GRO Green Roof Code.

## Composition

High Density Poly Ethylene (HDPE) bonded to a geotextile filter.

## Application

Suitable for sedum, wildflower, biodiverse roofs, and podium and roof garden applications as part of an EGR system. The product is resistant to root penetration.

## Fire Compliance

Product has been tested as part of a system to BS EN 13501-5:2016 and compliant to Broof(t4) classification.

## Packaging

Boards are stacked on a pallet with a quantity of up to 200.

## Dimensions

2000 x 1000 x 20mm (L x W x H).

## Testing

Tested to UKAS accredited ISO 17025 laboratory to all mechanical properties.



Technical Data	Test	Unit	Mean Values		
Mechanical Properties - Geocomposite					
Compressive strength	EN ISO 25619-2	kPa	115		
Tensile strength (MD/CMD)	EN ISO 10319	kN/m	17		
Static puncture (CBR)	EN ISO 12236	kN	2.6		
Hydraulic Properties – Geotextile					
Water permeability V <sub>H50</sub>	EN ISO 11058	l/(m²•s)	100		
Apparent opening size	EN ISO 12956	µm	80		
Hydraulic Properties - Geocomposite					
Water flow capacity in the plant	EN ISO 12958	l/(m²•s)	(i=1)	(i=0.5)	(i=0.1)
@20kPa			10.0	8.0	5.0
@100kPa			9.0	6.0	3.5
@200kPa			5.0	2.0	1.0
Water storage capacity		l/m²	4		
Physical Properties					
Thickness @ 2kPa	EN ISO 9863-1	mm	21		
Standard colour – Cusgate			Black		
Polymer - Cusgate			HDPE		
Polymer - Textile			PP		

The above information is issued in good faith and without warranty and is intended as a guide only. The information comprises typical data and does not constitute a specification.

## ECO GREEN GROUP

3 Rays Farm Barn, Ingatestone, Essex CM4 9EH

T: 01277 355705 E: [info@ecogreengroup.co.uk](mailto:info@ecogreengroup.co.uk)

W: [www.ecogreengroup.co.uk](http://www.ecogreengroup.co.uk)

EGR\_DBR20\_PDS\_290321-1



# Extensive Growing Medium

**Product code:** EGR EXTSUB **Reference Standard:** Peat-free product and test results are compliant to BS 8616:2019

## Description

A blend of water retaining aggregates, crushed brick and organic material mixed to provide an extensive substrate to meet customer specification. EGR EXTSUB performs in line with requirement set forth by German FLL Guidelines The GRO Green Roof Code.

## Composition

Substrate is composted material from sustainable sources, the crushed brick element is a by-product or a second from the brick manufacturing industry and therefore contains no demolition waste.

## Application

Extensive substrates are a versatile lightweight and free draining green roof growing medium ideal for sedum mat systems, substrate-based plug plant systems and seeds supporting hardier lower maintenance plants such as sedum, wild flowers and grasses.

## Fire Compliance

Product has been tested as part of a system to BS EN 13501-5:2016 and compliant to Broof(t4) classification.

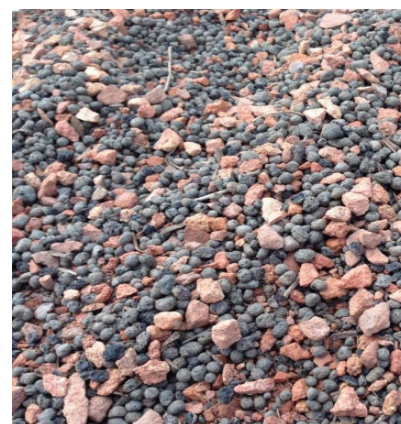
## Packaging

Available in bulk bags and 25Ltr sacks



**grō**

Technical Data	Value	Unit
Depth suitability	60 - 250	mm
Loose bulk density	850 – 900	Kg/m <sup>3</sup>
Loose bulk density saturated	1060 – 1125	Kg/m <sup>3</sup>
Coarse Fragments > 2mm	70 (approx.)	%
Water Holding Capacity	> 45	%
pH value	6.5 – 8	
Organic matter	Less than 20%	



Extensive Growing Medium

The above information is issued in good faith and without warranty and is intended as a guide only. The information comprises typical data and does not constitute a specification.

## ECO GREEN GROUP

3 Rays Farm Barn, Ingatestone, Essex CM4 9EH

T: 01277 355705 E: [info@ecogreengroup.co.uk](mailto:info@ecogreengroup.co.uk)

W: [www.ecogreengroup.co.uk](http://www.ecogreengroup.co.uk)

EGR\_EXTSUB\_PDS\_290321-1





## Sedum Blanket

**Product code:** EGR SB

### Description

Up to 9 carefully selected sedum species as part of a pre-cultivated vegetation blanket. EGR SB performs in line with requirement set forth by German FLL Guidelines and The GRO Green Roof Code.

### Composition

The base is a geotextile fabric carrier membrane with 25mm substrate base on top in which the vegetation is embedded.

### Application

Pre-grown for use on extensive green roofs, podiums and roof gardens. The mixed species incorporated within the blanket are drought tolerant. To be used in conjunction with other components to create a low maintenance sedum green roof system.

### Fire Compliance

Product has been tested as part of a system to BS EN 13501-5:2016 and compliant to Broof(t4) classification.

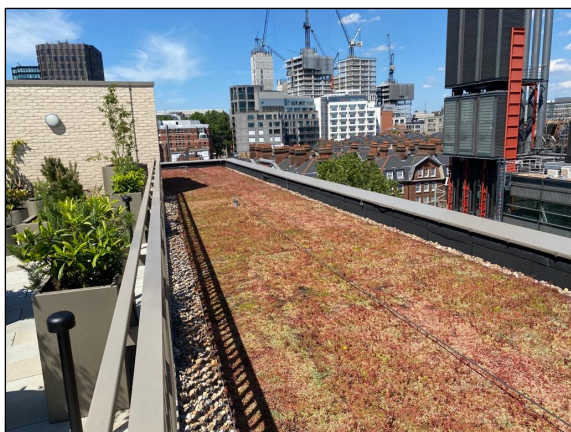
### Packaging

Supplied in rolls on pallets



**gro**

Technical Data	Value	Unit
Total height	20-50 plant height	mm
Weight (dry)	18	kg/m <sup>2</sup>
Weight (saturated)	25	kg/m <sup>2</sup>
Consignment size	40 per pallet	m <sup>2</sup> (typical)
Size	2.1 x 1	m <sup>2</sup>
Colour	Variation due to mixed species	



Sedum blanket installation

### ECO GREEN GROUP

3 Rays Farm Barn, Ingatestone, Essex CM4 9EH

T: 01277 355705 E: [info@ecogreengroup.co.uk](mailto:info@ecogreengroup.co.uk)

W: [www.ecogreengroup.co.uk](http://www.ecogreengroup.co.uk)

EGR\_SB\_PDS\_290321-1

## Sedum Species



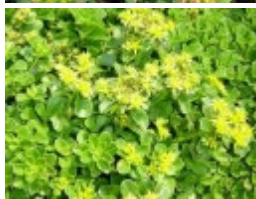
Sedum Album



Sedum Hybridum



Sedum Floriferum



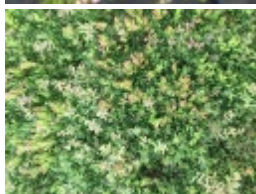
Sedum Ellacombianum



Sedum Selskianum True



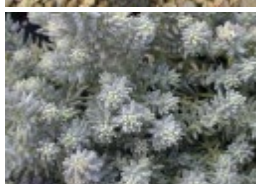
Sedum Pulchellum



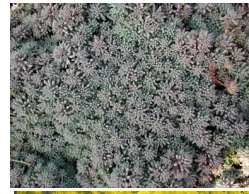
Sedum Reflexum



Sedum Middendorffianum



Sedum Montanum



Sedum Montanum  
Orientale



Sedum Sexangulare



Sedum Acre



Sedum Spureum  
'Coccineum'

The above information is issued in good faith and without warranty and is intended as a guide only. The information comprises typical data and does not constitute a specification.

## ECO GREEN GROUP

3 Rays Farm Barn, Ingatestone, Essex CM4 9EH

T: 01277 355705 E: [info@ecogreengroup.co.uk](mailto:info@ecogreengroup.co.uk)

W: [www.ecogreengroup.co.uk](http://www.ecogreengroup.co.uk)

EGR\_SB\_PDS\_290321-1





## River-Washed Cobbles 20-40mm

**Product code:** EGR COB

### Description

River-washed naturally rounded cobbles. EGR COB performs in line with requirement set forth by German FLL Guidelines and The GRO Green Roof Code.

### Composition

20-40mm rounded stones

### Application

Rounded cobbles are installed, as part of a green and biodiverse roof system, to prevent the spread of fire.

Cobbles to be installed around all penetrations and perimeters, this includes, but not exclusive to, rainwater outlets, soil pipes and rooflights. A fire break of 300mm-500mm width is the requirement, on roofs that are over 40m in length the fire break width to be 1m

### Fire Compliance

Product has been tested as part of a system to BS EN 13501-5:2016 and compliant to Broof(t4) classification.

### Packaging

Available in bulk bags and 25Ltr sacks



**gro**

The above information is issued in good faith and without warranty and is intended as a guide only. The information comprises typical data and does not constitute a specification.

### ECO GREEN GROUP

3 Rays Farm Barn, Ingatestone, Essex CM4 9EH

T: 01277 355705 E: [info@ecogreengroup.co.uk](mailto:info@ecogreengroup.co.uk)

W: [www.ecogreengroup.co.uk](http://www.ecogreengroup.co.uk)

EGR\_COB\_PDS\_290321-1