

1, 4 & 7 Triton Square Isolations

Date: 1st March 2018

1. The two High Voltage (HV) JP Morgan supplies were disconnected and the cables cut from within the UKPN sub-station and in the switch rooms.



JP Morgan HV cables cut from within the UKPN switch room.



JP Morgan HV cables cut from within the two switch rooms.

2. The Landlords HV supplies were racked out and the EPO pushed to isolate power back to the UKPN substation.



TRANSFORMER 2.2

THIS IS
V.C.B. TR
FOR BU

TRIP



BREAKER



CLOSE



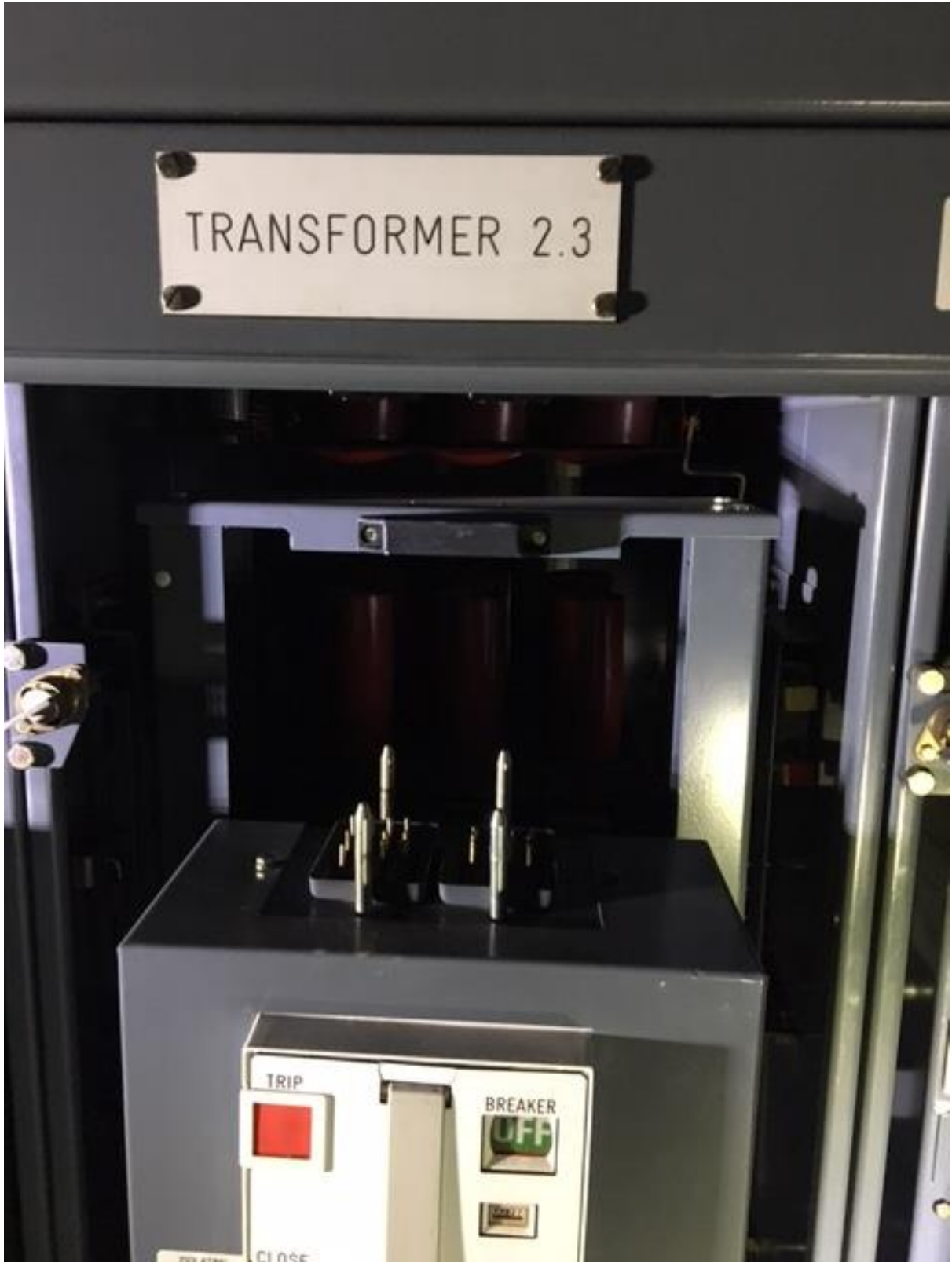
SPRINGS



ISOLATING MECHANISM



TRANSFORMER 2.3



TRANSFORMER 2.4

THIS UNIT INCORPORATES
V.C.B. TRANSFER
FOR BUDDING AND



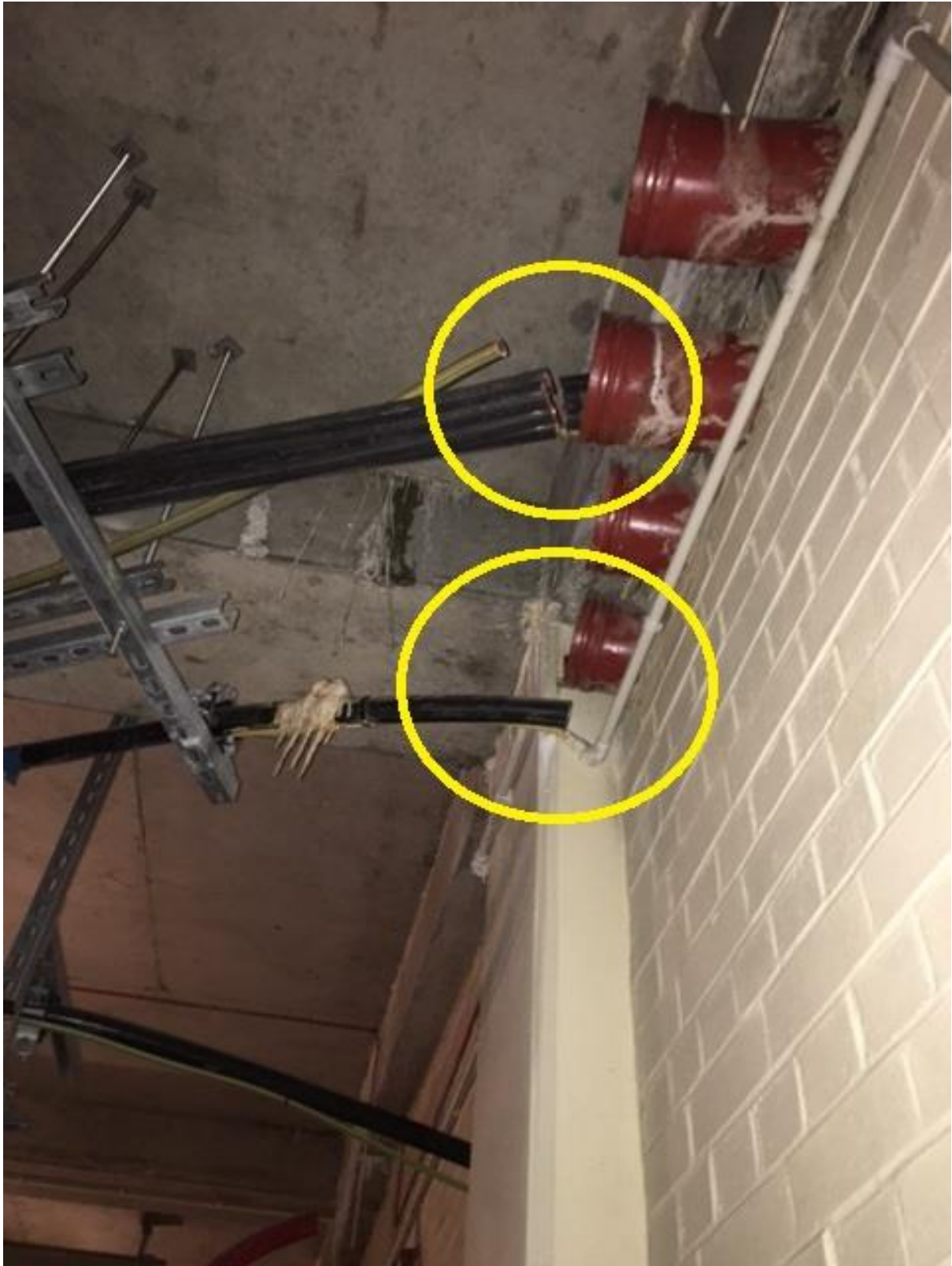


- The three Low Voltage supplies to the Gym, Nursery and Service (unknown supply) were disconnected and the cables cut from within the UKPN substation and within the retail unit.





The Gym (Homes Place), Nursery (Kids Unlimited) and Service (Unknown) supplies cut within the UKPN sub-station.



Gym (Homes Place) and Nursery (Kids Unlimited) supply cut with in UKPN sub-station.



Service (unknown) supply cut within UKPN sub-station.



LV Supply cut from within the gym (Homes Place).



LV supply cut from within the Nursery (Kids Unlimited)

4. The gas supplies to the Landlords Boilers and Gym were shut off and a gas tightness test was carried out to prove the valves hold.



Landlords gas supply isolated

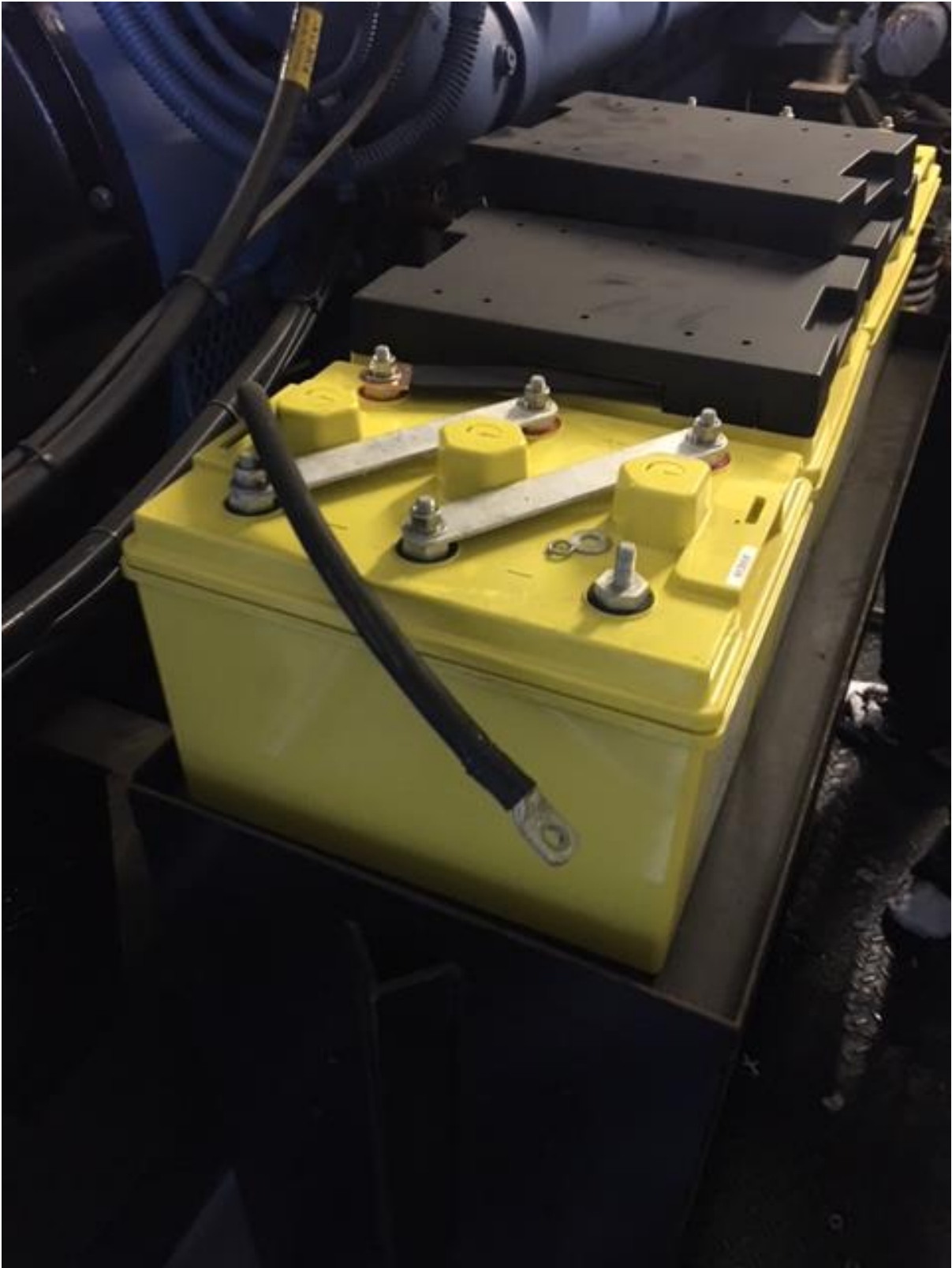


Gym Gas supply isolated

5. All Generator starting batteries were disconnected.

JP Morgan







BROADCROWN

☎ +44 (0) 1889 270200 📠 +44 (0) 1889 272220 📧 sales@broadcrown.co.uk



EAR PROTECTION MUST BE WORN WHEN OPERATING THIS GENERATOR



HEAD PROTECTION TO BE WORN WHEN WORKING IN THIS AREA



PROTECTIVE FOOTWEAR MUST BE WORN WHEN WORKING IN THIS AREA



EYE PROTECTION TO BE WORN DURING GRINDING/ DRILLING OPERATIONS



GLOVES TO BE WORN WHEN HANDLING OIL AND CHEMICALS



ENSURE THAT GUARDS ARE FITTED AFTER SERVICE PROCEDURES COMPLETED



CAUTION HIGH VOLTAGE RISK OF ELECTRIC SHOCK



NO SMOKING NO NAKED LIGHTS

GENERATOR
No. 2

JPM
GENERATOR 2
TSR/FGE/NO22





+44 (0) 1889 272200 +44 (0) 1889 272220 sales@broadcrown.co.uk



EAR PROTECTION MUST BE WORN WHEN OPERATING THIS GENERATOR



HEAD PROTECTION TO BE WORN WHEN WORKING IN THIS AREA



PROTECTIVE FOOTWEAR MUST BE WORN WHEN WORKING IN THIS AREA



EYE PROTECTION TO BE WORN DURING GRINDING/ DRILLING OPERATIONS



GLOVES TO BE WORN WHEN HANDLING OIL AND CHEMICALS



ENSURE THAT GUARDS ARE FITTED AFTER SERVICE PROCEDURES COMPLETED



CAUTION HIGH VOLTAGE RISK OF ELECTRIC SHOCK



NO SMOKING NO NAKED LIGHTS

GENERATOR
No. 3

JPM
GENERATOR 3

TS/RF/GEN/003





Landlords Generators







