


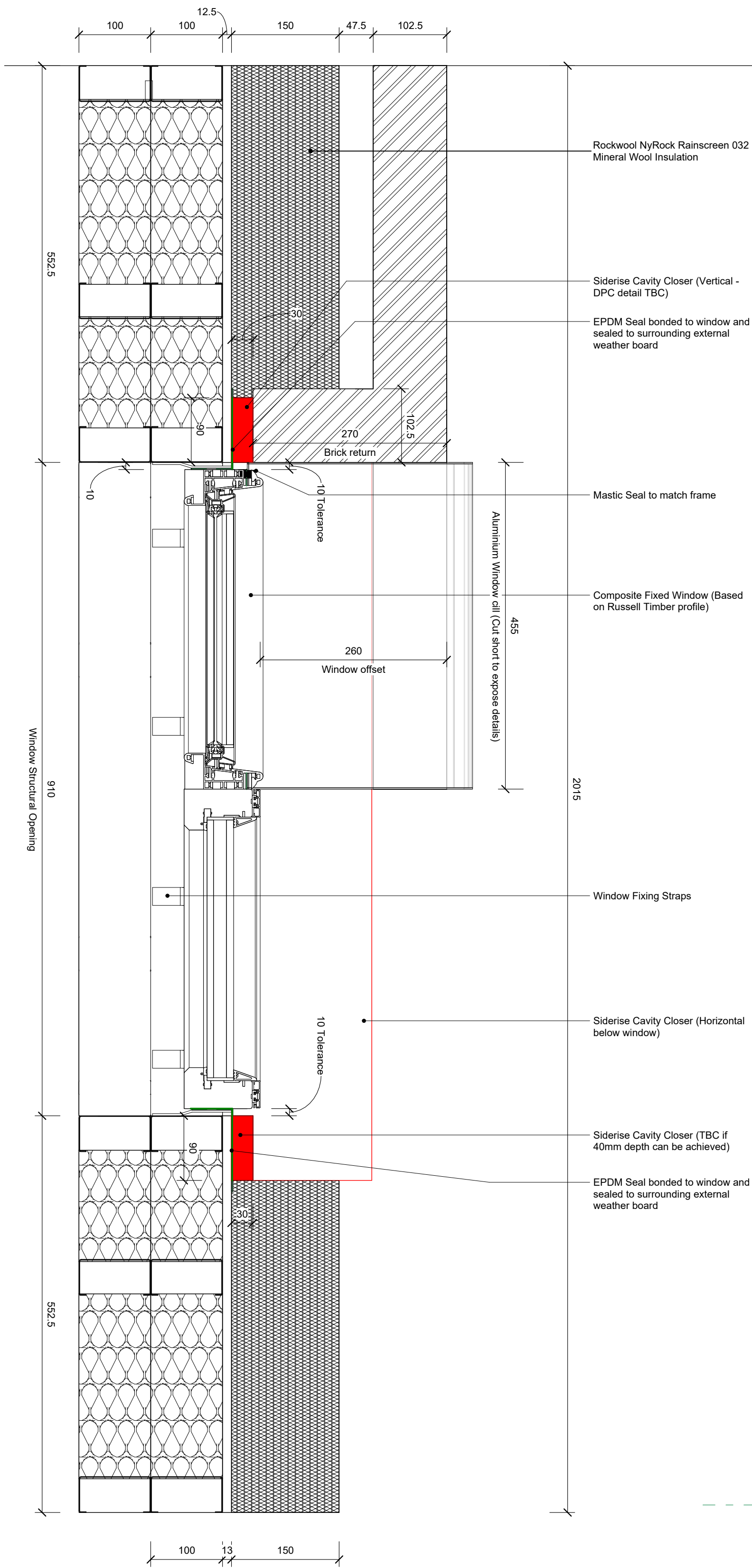
BRICK: Zinnia
MORTARS: Y76 DARK, Y181 MEDIUM & WHITE
BUCKET HANDLE

Declaration of performance - DoP (CE)			
DoP-Nr.		GHDN025A0B L1-23020	
Unique identification code of the product type / CE + Size		L1	LD-08
Type, batch or serial number or any other element allowing identification of the construction product as required pursuant to Article 11(4)		Zinnia	GHDN025A0B L1-23020
Intended use or uses of the construction product, in accordance with the applicable harmonised technical specification, as foreseen by the manufacturer		U (unprotected) Products for use in unprotected (protected) masonry walls, columns and partitions .	
Name, registered trade name or registered trade mark and contact address of the manufacturer as required pursuant to Article 11(5)		Vandersanden NV Riemsterweg 300 B-3740 Bilzen (Spouwen)	Nijverheidslaan 11 3650 Lanklaar Belgium
Where applicable, name and contact address of the authorised representative whose mandate covers the tasks specified in Article 12(2)		Not applicable	
System or systems of assessment and verification of constancy of performance of the construction product		2+	
Performed the following tasks under the above AVCP system: the factory production control, performed the continuous surveillance, assessment and evaluation of the factory production control and issued the certificate of conformity of the factory production control N°		EN 771-1 - 0620-CPR-97884	
Harmonized standard		EN 771-1:2011+A1:2015	
Declared performance	Dimensions	214 X 101 X 65 mm	EN771-1:2011+A1-2015 - 5.3.1
	Dimensional tolerances	T2	EN771-1:2011+A1-2015 - 5.3.1
	Range	R1	EN771-1:2011+A1-2015 - 5.3.1
	Configuration. group of the unit	NPD	EN771-1:2011+A1-2015 - 5.3.2
	Active Soluble Salts	S2	EN771-1:2011+A1-2015 - 5.3.9
	Mean Compressive strength	>= 20 N/mm ²	EN771-1:2011+A1-2015 - 5.3.4
	Normalized Compressive strength	>= 20 N/mm ²	EN771-1:2011+A1-2015 - 5.3.4
	Dimensional stability	NPD	EN771-1:2011+A1-2015 - 5.3.10
	Bond Strength general	0,15 N/mm ²	EN771-1:2011+A1-2015 - 5.3.13
	Bond Strength thin layer	0,30 N/mm ²	EN771-1:2011+A1-2015 - 5.3.13
	Reaction to fire	A1	EN771-1:2011+A1-2015 - 5.3.11
	Water absorption	<= 14% m/md	EN771-1:2011+A1-2015 - 5.3.7
	Water vapour permeability	5/10	EN771-1:2011+A1-2015 - 5.3.12
	Net dry density	1740 kg/m ³ (D1)	EN771-1:2011+A1-2015 - 5.3.3
	Gross dry density	1630 kg/m ³ (D1)	EN771-1:2011+A1-2015 - 5.3.3
	Thermal conductivity Lambda 50/50	0,60 W/m.K	EN771-1:2011+A1-2015 - 5.3.5
	Durability against freeze thaw	F2	EN771-1:2011+A1-2015 - 5.3.6
	Dangerous substances	NL-BSB	EN771-1:2011+A1-2015 - 5.3.14
This declaration of performance is issued under the sole responsibility of the manufacturer		Signed for and on behalf of the manufacturer by:  R. Peeters, CEO Vandersanden NV 01-10-2021	

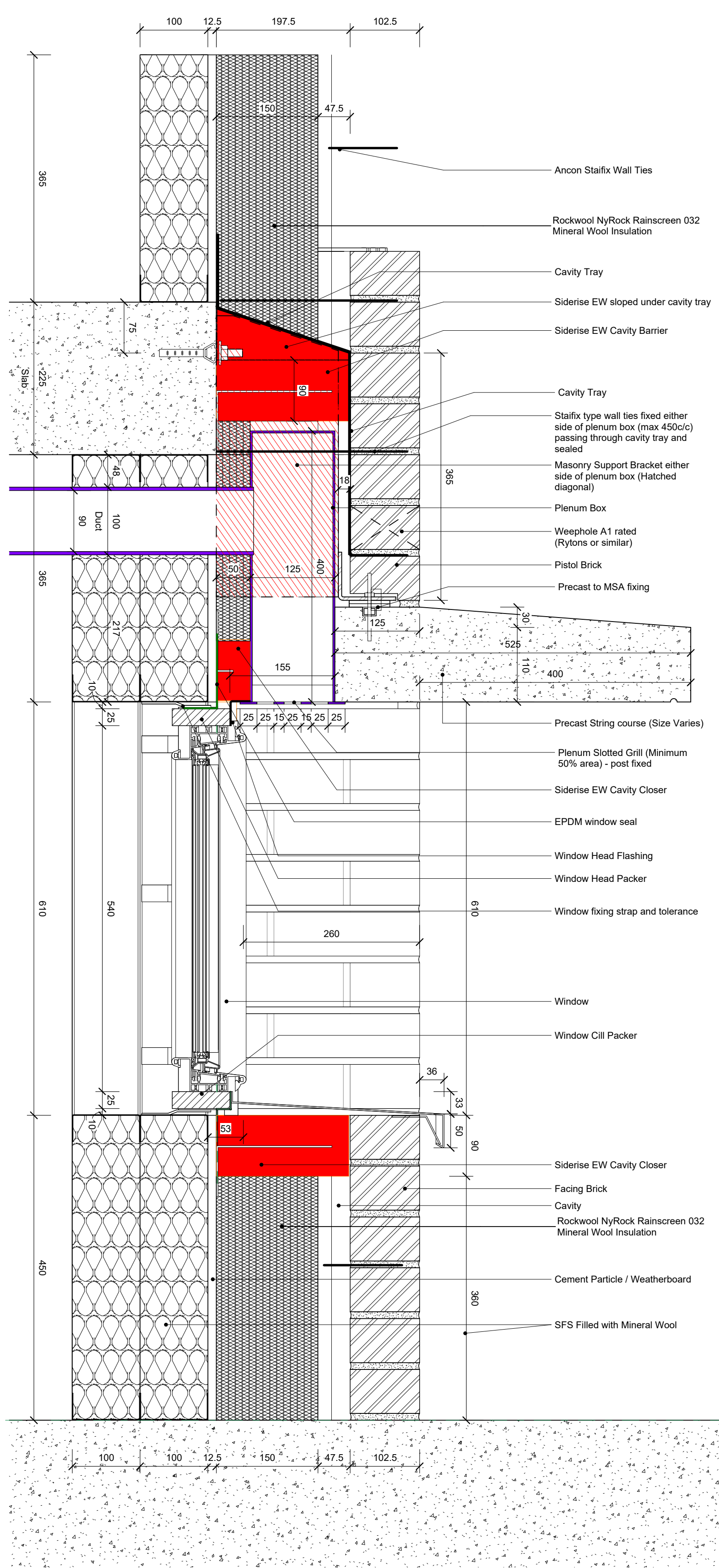




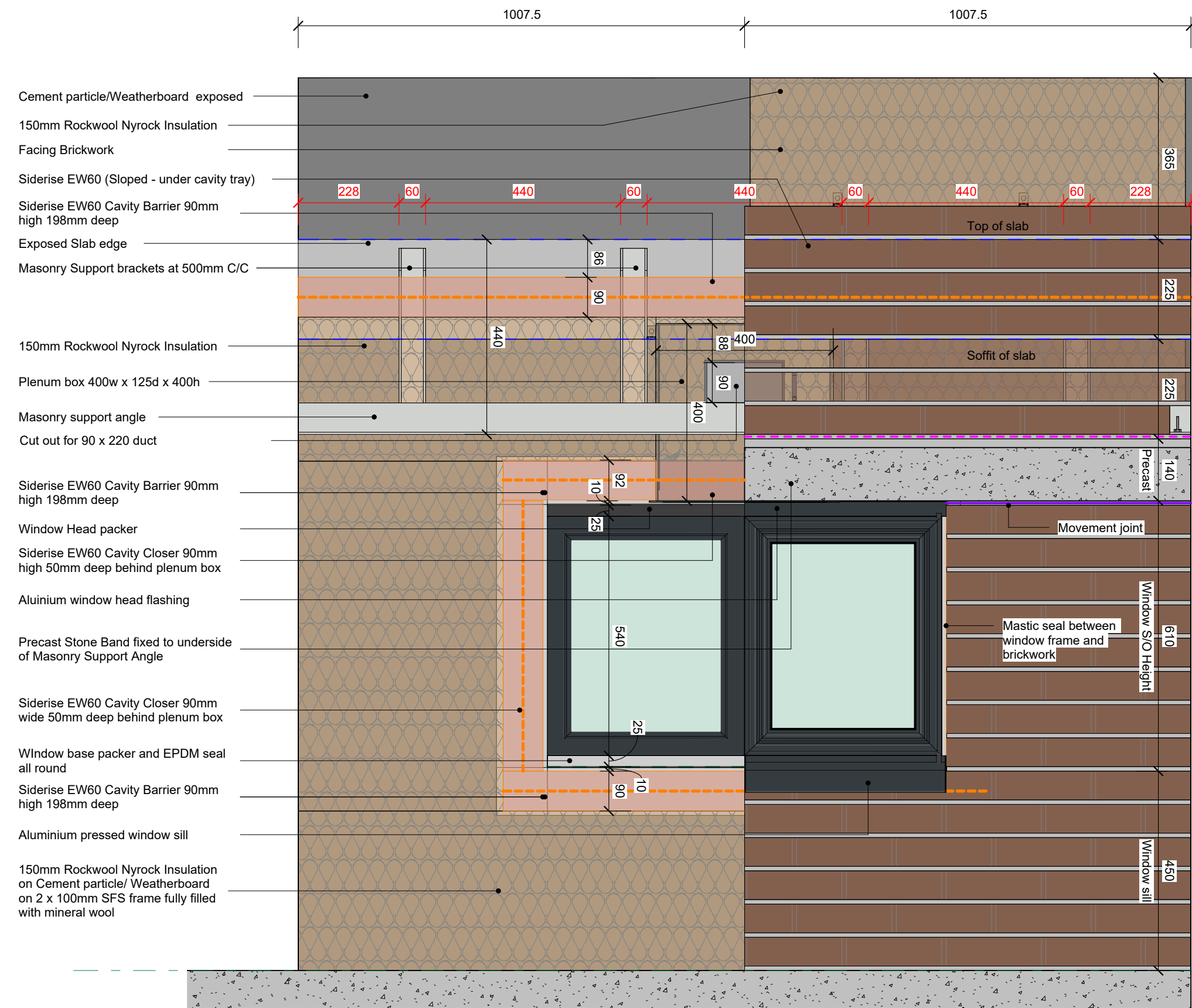
SPANISH DOLOMITE



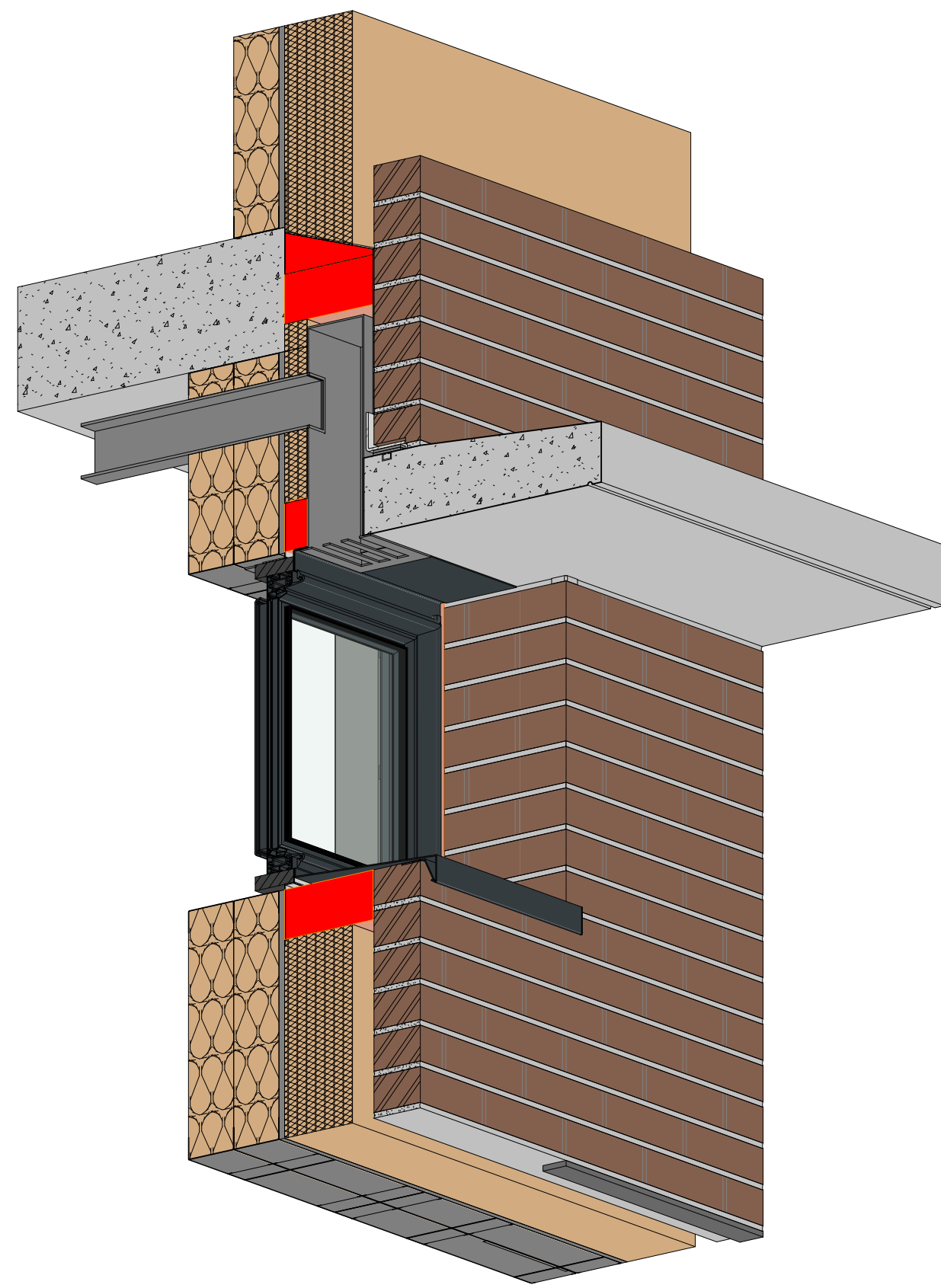
① Sample Panel Plan
1 : 5



③ Sample Panel Section
1 : 5



② Sample Panel Elevation - with Brickwork
1 : 10



Do not scale from this drawing

© Brookes Architects Limited (BAL), all rights reserved.

This drawing has been prepared for the use of BAL's client specifically for the site titled below. It may not be used, modified, reproduced or relied upon by third parties.

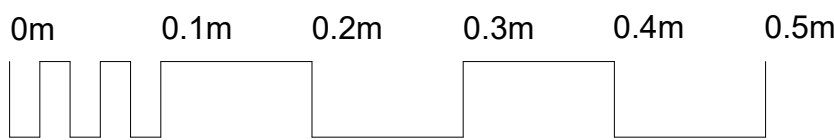
Do not scale from this drawing. All areas are approximate. All dimensions are to be verified on site prior to construction. Responsibility for the reproduction of this drawing lies with the recipient to check that all information has been replicated in full when compared with the original.

This drawing must be read in conjunction with all other relevant consultants' information.

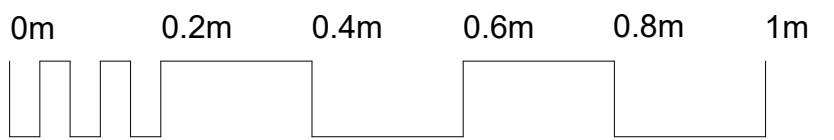
Any discrepancies and/or ambiguities within this drawing, or between it and information given elsewhere, must be reported immediately to BAL for clarification before proceeding.

All works are to be carried out in accordance with current British Standards, Building Regulations and relevant Codes of Practice.

Refer to the Construction (Design and Management) documentation where applicable. It is assumed that all works will be carried out by a competent contractor working, where necessary, to an approved method statement.



Visual Scale 1:5



Visual Scale 1:10

PLANNING

Rev	Status	Description	Issued	Drawn/Chk
P2	PI	Planning Issue	29.05.24	KT/AW
P1	Pr	Sample Panel 1st Issue	24.01.24	AM

Client

Project No.

5361

Project

Acorn House
Gray's Inn Road
London, WC1X 8DP

Drawing

Sample Panel - Sheet 1

Scale	Date	Drawn	Checked
As indicated@A1	Jan' 24	AM	AM

Brookes Architects

Unit 1 - 56 Glenham Road
London SW13 9JJ

T 020 8487 1223

www.brookesarchitects.co.uk

5361-BAL-XX-ZZ-DR-A-21-0400	Revision P2 PI Status
-----------------------------	--------------------------------