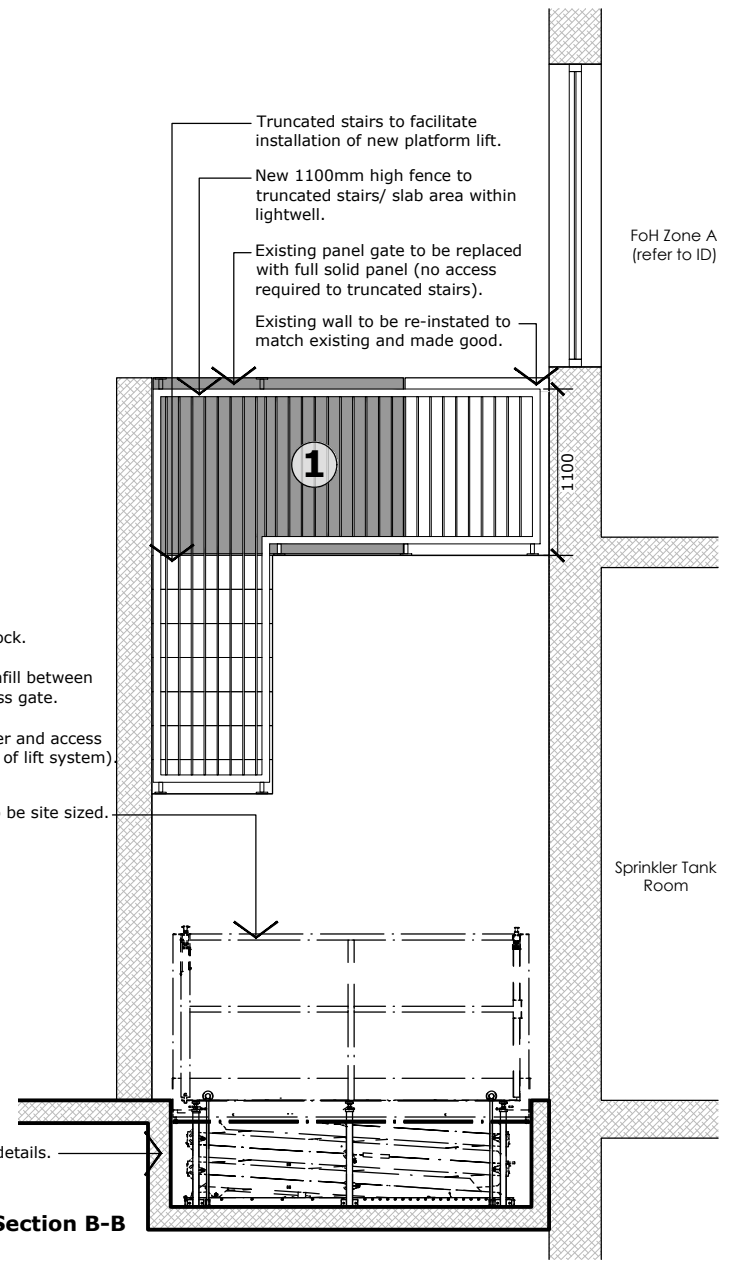
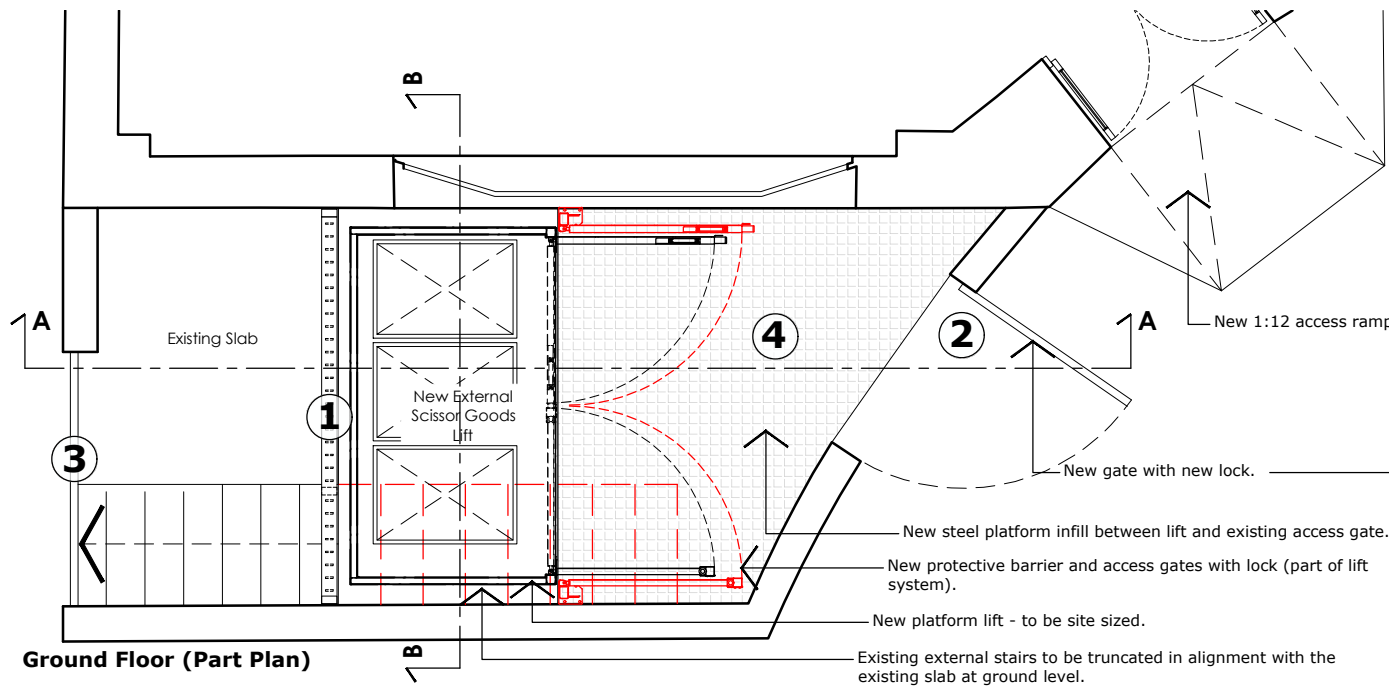


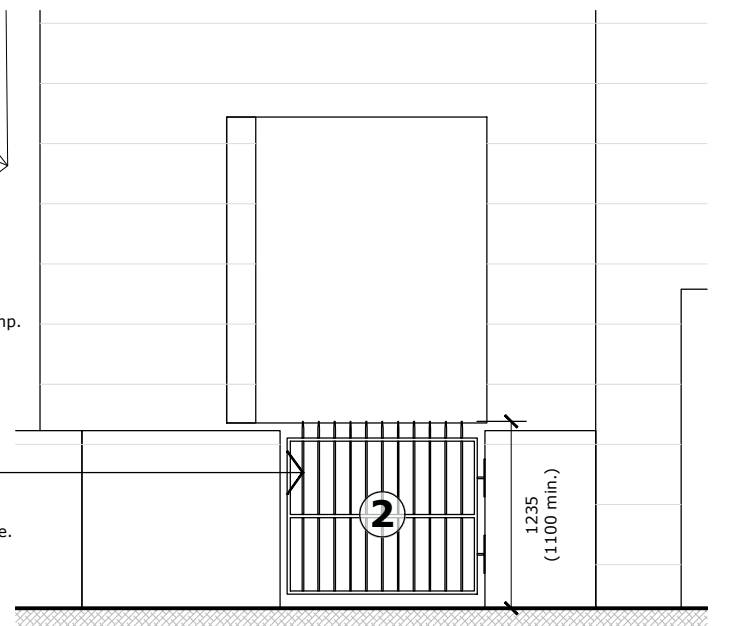
Section A-A



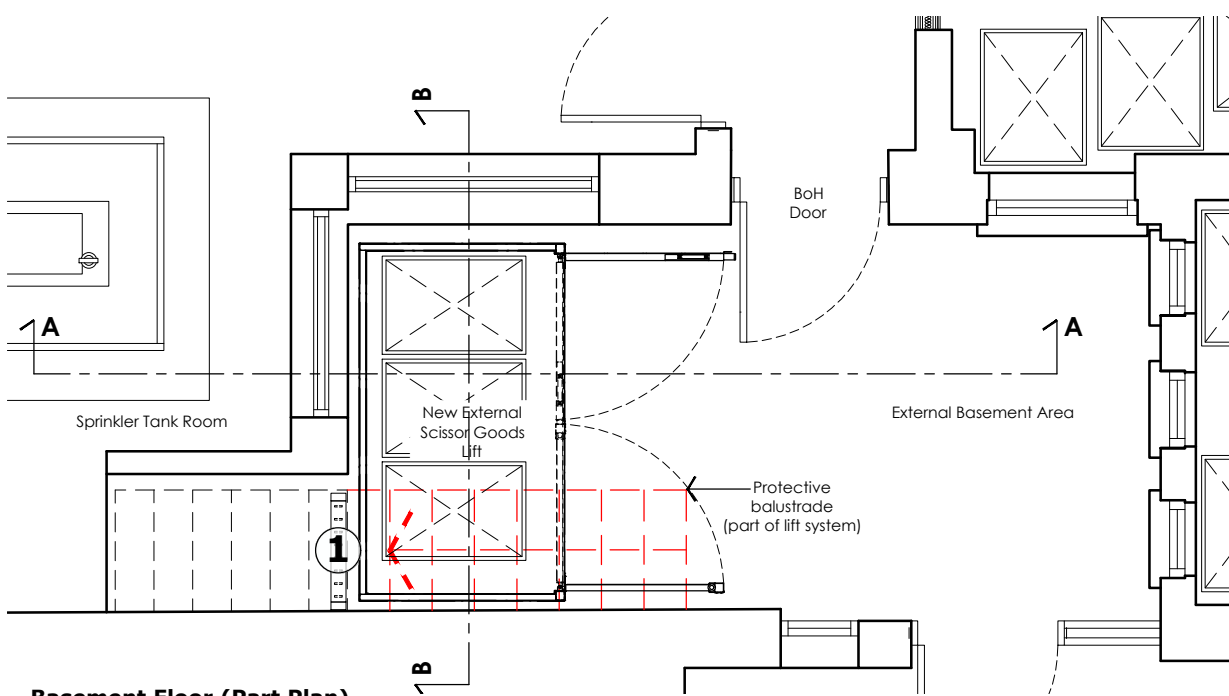
Section B-B



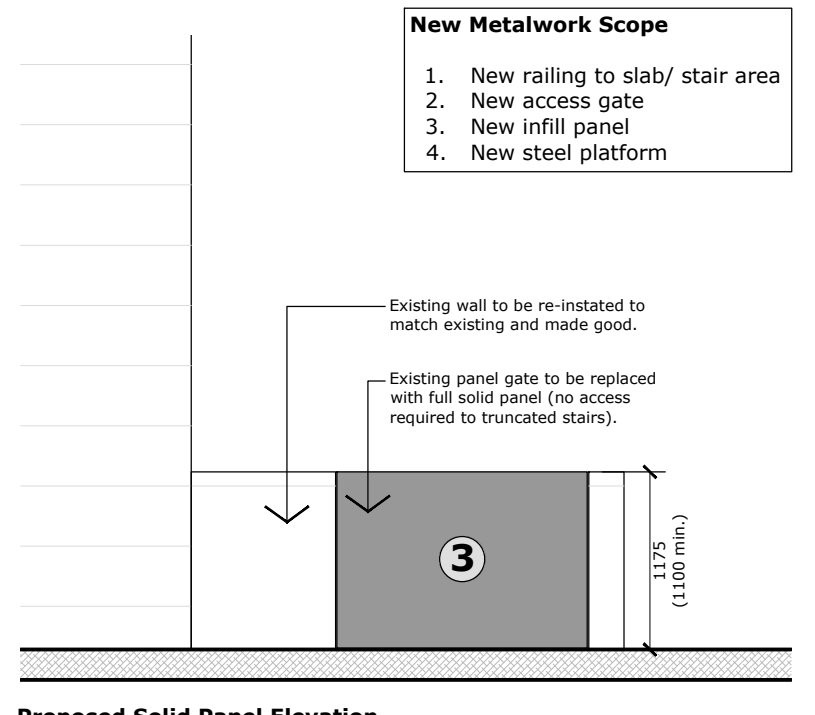
Ground Floor (Part Plan)



Proposed New Gate Elevation



Basement Floor (Part Plan)



Proposed Solid Panel Elevation

New Metalwork Scope

1. New railing to slab/ stair area
2. New access gate
3. New infill panel
4. New steel platform

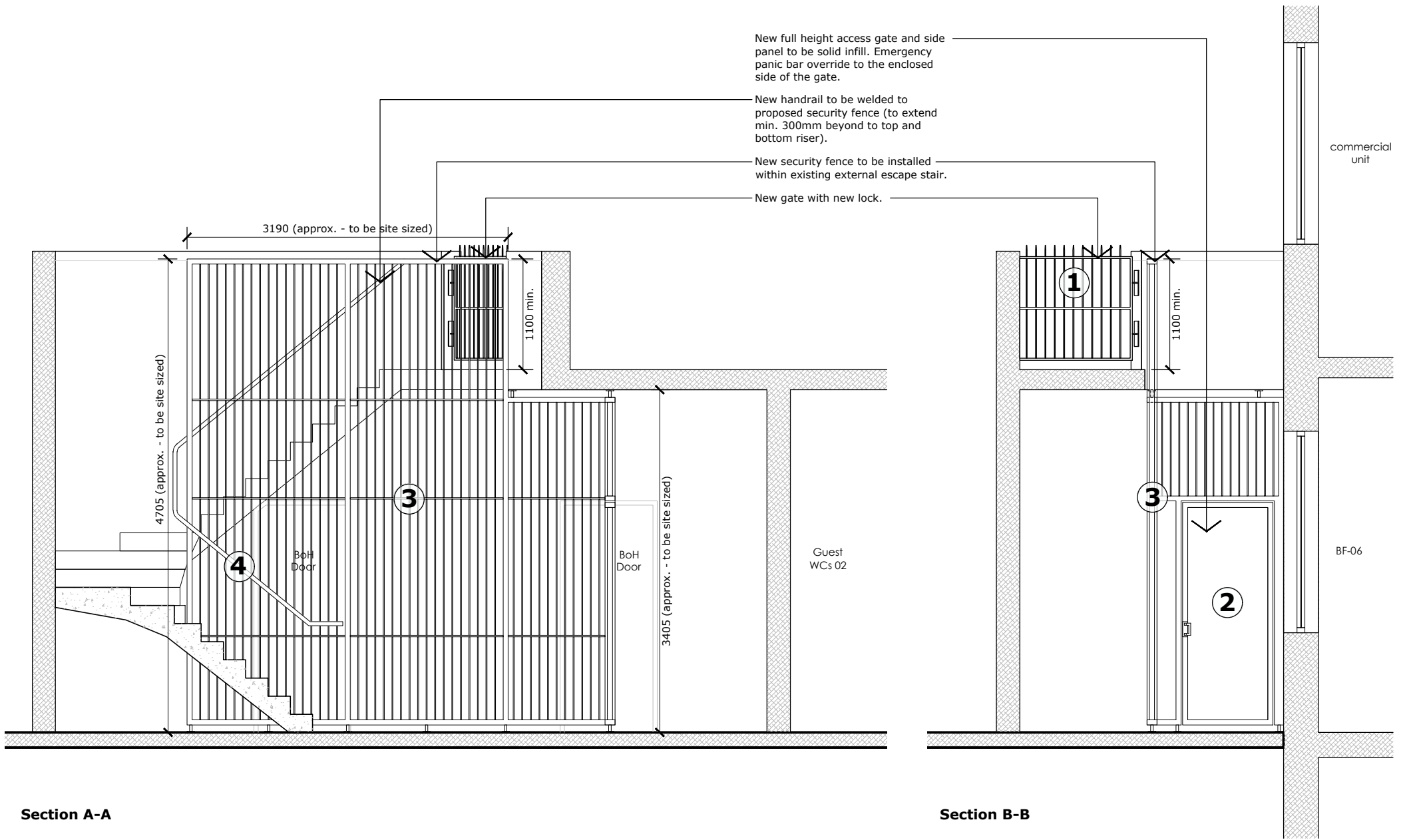
Do not scale from this drawing. If in doubt, ask.
This drawing is the property of maith design limited and must not be copied, reproduced or disclosed without written permission.

previous revisions
 revision: -- First issue
 A Update to new lift orientation
 by: RR MO
 date: 18.10.2023 08.05.2024

suite 320-323
 baltic chambers
 50 wellington street
 glasgow g2 6hj
 0141 348 7700
 office@maithdesign.com
 www.maithdesign.com

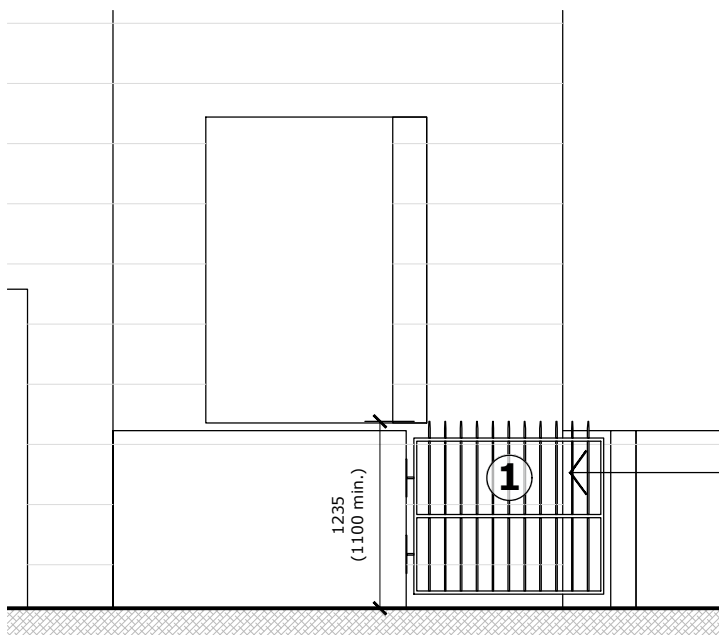
MAITH
 DESIGN LTD

project 0100 County Hotel Euston
 client Splendid Hospitality Group
 drawing External Platform Lift - Sheet 01
 scale @ A3 1:50
 dwg number AL(90)500
 revision A
 date 08.05.2024
 status Construction

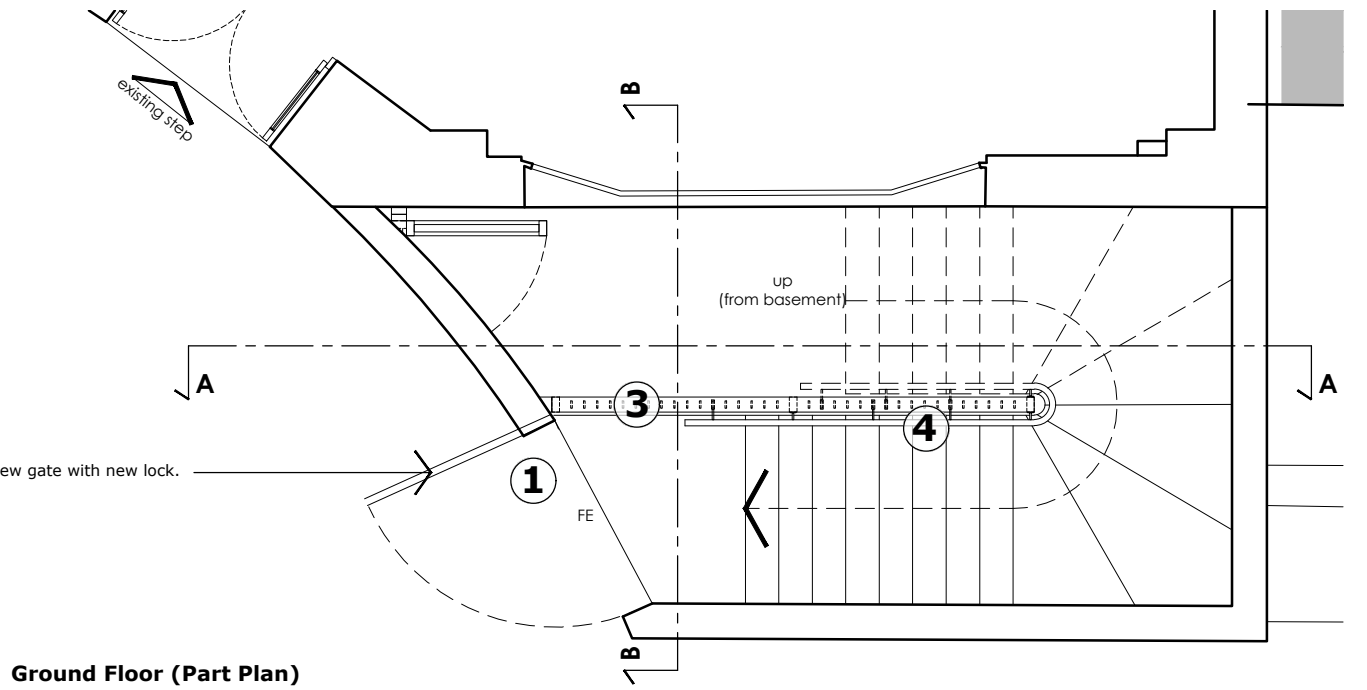


Section A-A

Section B-B

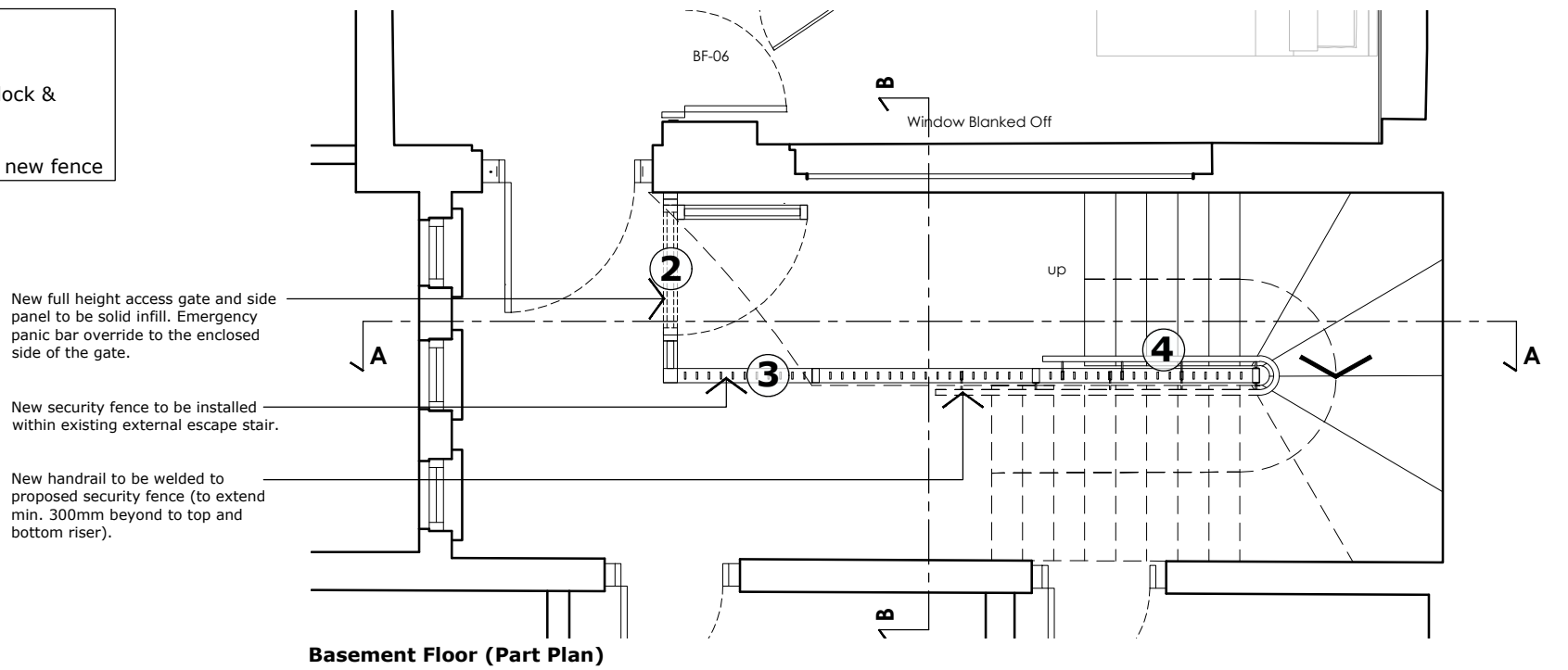


Proposed New Gate Elevation



Ground Floor (Part Plan)

- New Metalwork Scope**
1. New access gate
 2. New solid metal panel gate latch lock & emergency push bar release
 3. New security fence
 4. New handrails to be welded on to new fence



Basement Floor (Part Plan)

Do not scale from this drawing. If in doubt, ask. This drawing is the property of maith design limited and must not be copied, reproduced or disclosed without written permission.	previous revisions	by:	date:	suite 320-323 baltic chambers 50 wellington street glasgow g2 6hj 0141 348 7700 office@maithdesign.com www.maithdesign.com		project	0100 County Hotel Euston
	revision: -- First issue	MO	10.05.2024			client	Splendid Hospitality Group
						drawing	External Escape stair - Security gate and fence
						scale @ A3	1:50
						dwg number	AL(90)501
						revision	-
						date	10.05.2024
						status	Construction