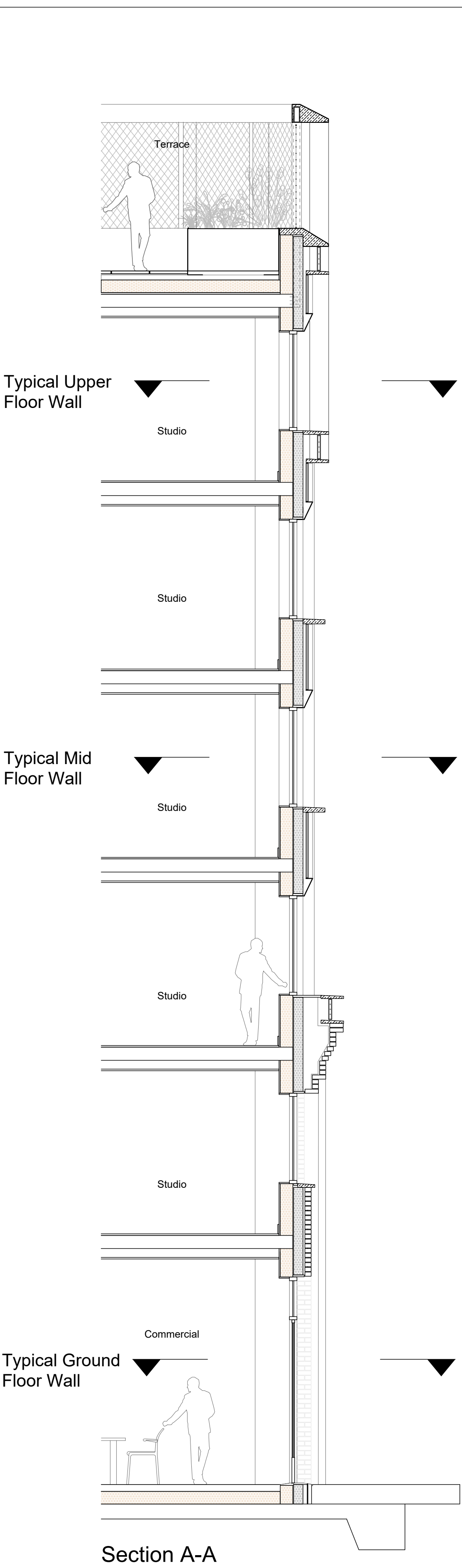
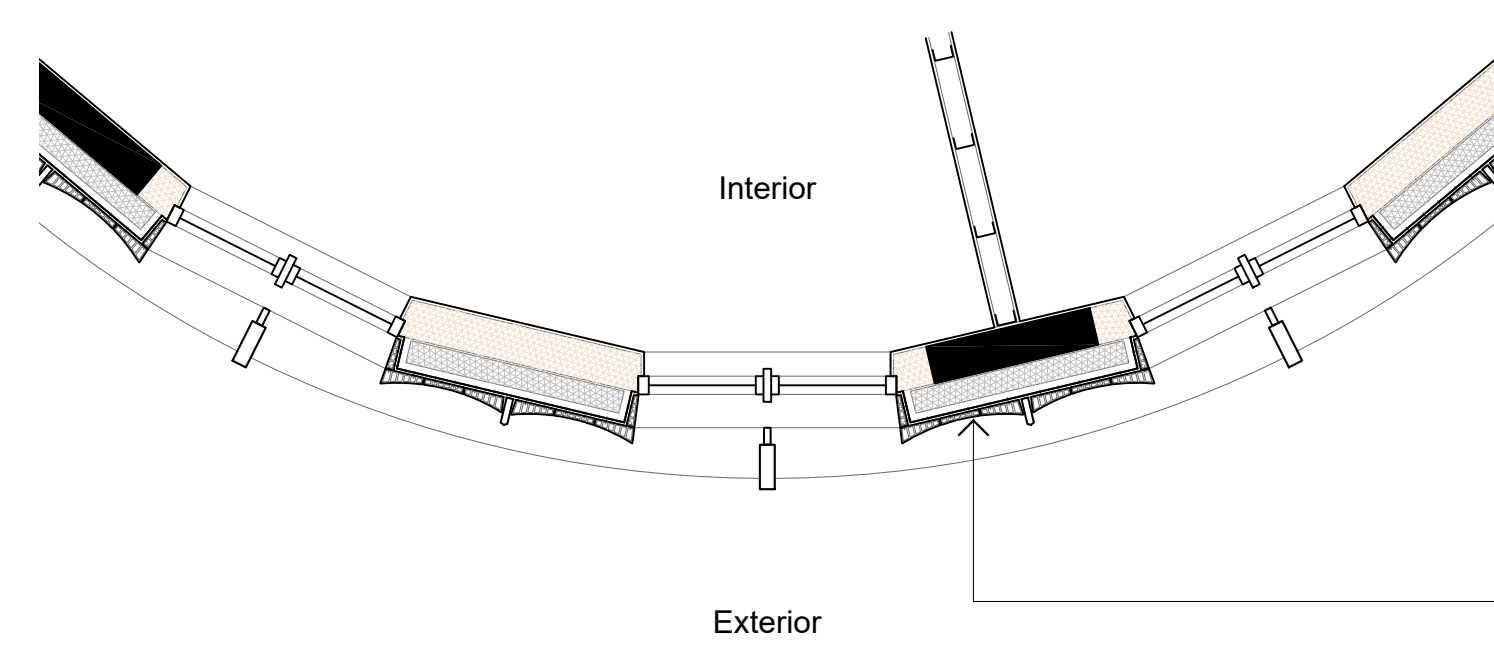


Elevation

A

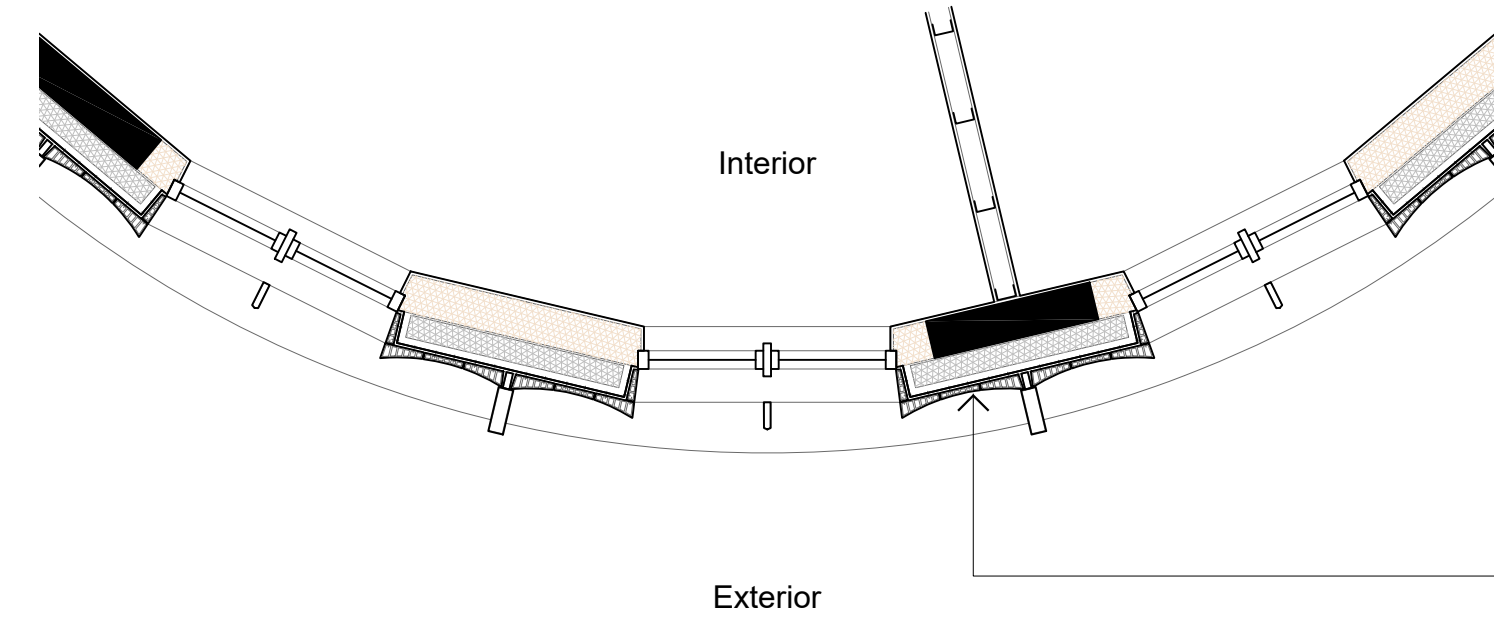


Section A-A



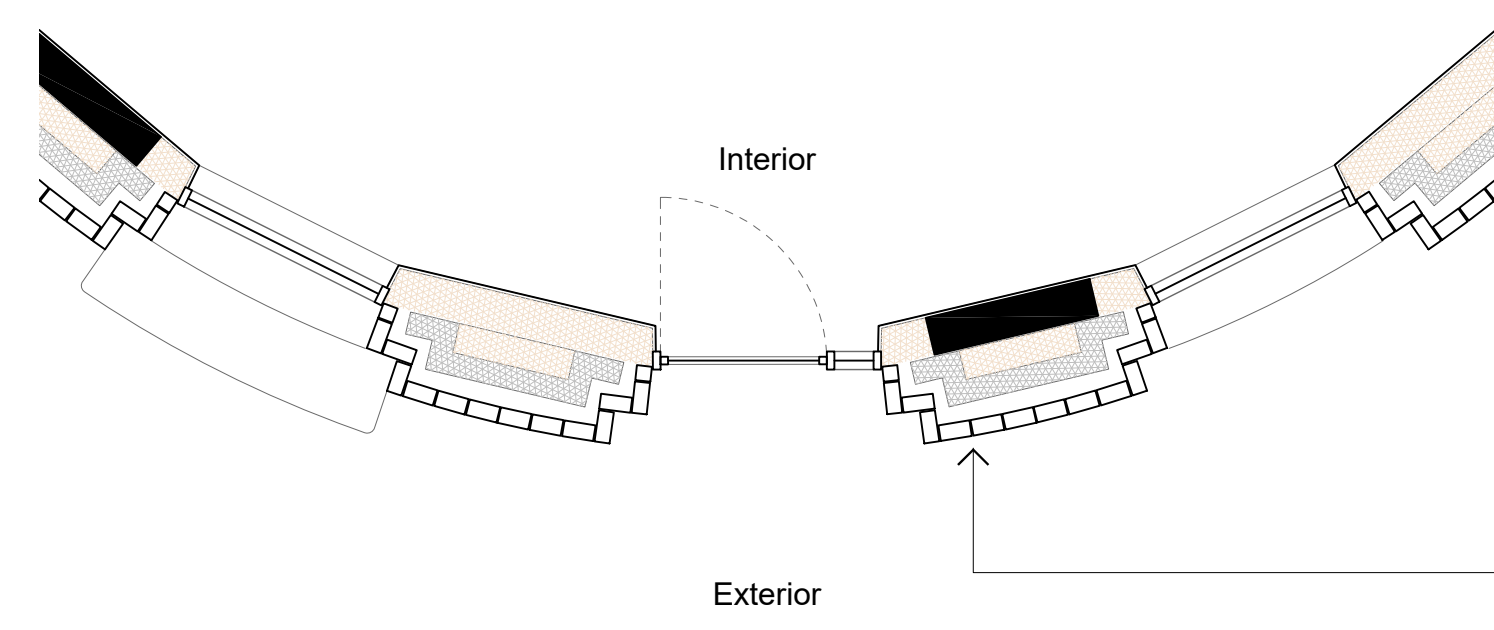
Typical Upper Floor Wall Design Intent Plan

- Metsec SFS Infill Wall.
- 3mm gypsum plaster skim
 - 12.5mm plasterboard
 - Vapour Barrier
 - 200mm depth metsec steel framing
 - 200mm Rockwool Flexi insulation
 - 10mm cement-bonded particleboard
 - 120mm Rockwool Rainscreen Duo insulation
 - Breather membrane
 - 50mm – galvanised steel framing
 - 80mm – profiled terracotta panels



Typical Mid Floor Wall Design Intent Plan

- Metsec SFS Infill Wall.
- 3mm gypsum plaster skim
 - 12.5mm plasterboard
 - Vapour Barrier
 - 200mm depth metsec steel framing
 - 200mm Rockwool Flexi insulation
 - 10mm cement-bonded particleboard
 - 120mm Rockwool Rainscreen Duo insulation
 - Breather membrane
 - 50mm – galvanised steel framing
 - 80mm – profiled terracotta panels



Typical Ground Floor Wall Design Intent Plan

- Loadbearing Brickwork Wall.
- 3mm gypsum plaster skim
 - 12.5mm plasterboard
 - Vapour Barrier
 - 200mm depth metsec steel framing
 - 200mm Rockwool Flexi insulation
 - 10mm cement-bonded particleboard
 - 120mm Rockwool Rainscreen Duo insulation
 - Breather membrane
 - Galvanised steel brick ties at 225mm vertical centres
 - 50mm – cavity
 - 105mm – facing brick

PBSA North Drum Bay Study

1m 2m 5m

NOTES

Site Boundary

Bay Study Location

30/05/24 Planning Revision B

28/05/24 Planning

PLANNING

rev	date	check	comments
DSDHA 357 Kennington Lane London SE11 5QY T 020 7703 3555 F 020 7703 3890 E info@dsdha.co.uk W www.dsdha.co.uk			
project			
100 Chalk Farm Road			
drawing title			
PBSA North Drum Bay Study			
drawn	size	date	scale
F1	A1	28/05/24	1 : 50
drawing number			revision
356_P50.001			B
REPORT DISCREPANCIES DO NOT SCALE FROM THIS DRAWING COPYRIGHT DSDHA		USE LATEST REVISION CHECK DIMENSIONS ON SITE	