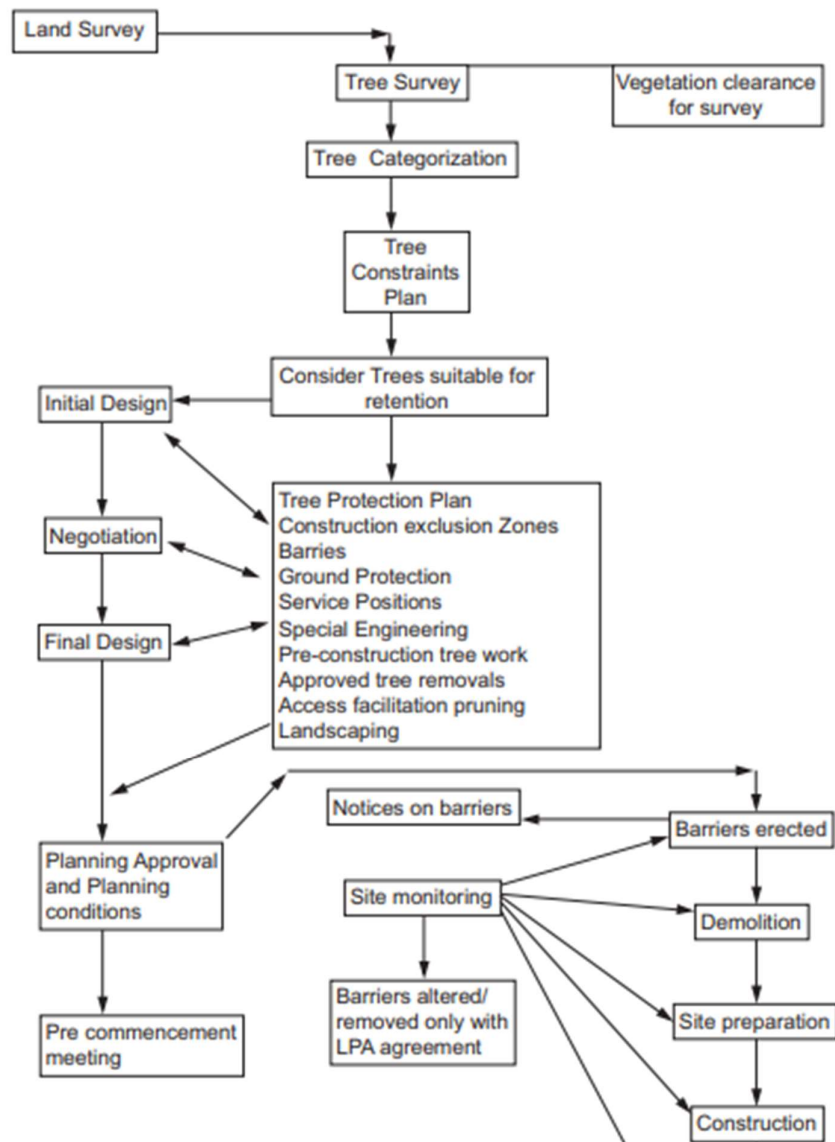


## Coleman Tree Protection

The below flow chart denotes the plan of which this document arrives at and the tree protection and examples of tree protections which will be adopted during the demolition phase of works at Hadley St Car Park.

The British Standard "Trees in Relation to Design, Demolition and Construction to Construction - Recommendations" (BS 5837) (2012), details the steps that should be taken to ensure that trees are appropriately and successfully retained when a development takes place.



## Example of fencing protection to the trees.



Works at Hadley Street will be done in a structured way with the southern trees protected prior to demolition in this area commencing. This will be done by erecting heras fencing as per the above photo of previous tree protection. The heras fencing will be erected to temporary works standard and be to the canopy of the tree and not just the trunk area, this is to ensure all the tree roots are protected. Appropriate signage will also be installed to the fencing warning workers of the exclusion zone.

## Exclusion Zones

As the trees canopy encroaches into the site area a 3m digging exclusion zone is in place for the project. The slab and foundations will not be disturbed in this area. See extract below showing the exclusion zone

