



Producer: **Mitsubishi Heavy Industries**

Line: **SRC ZSP-W**

Model: **SRC25ZSP-W**

Cooling capacity [kW]: **2.50**

Heating capacity [kW]: **2.80**

Power supply: **230V/1Ph/50Hz**

Data

Technical data

Cooling capacity	[kW]	2.50
Minimum cooling capacity	[kW]	0.90
Maximum cooling capacity	[kW]	3.10
Heating capacity	[kW]	2.80
Minimum heating capacity	[kW]	1.00
Maximum heating capacity	[kW]	4.10
Air flow in cooling mode	[m³/min]	23.7
Air flow in heating mode	[m³/min]	19.7
EER		3.52
COP		4.05

Electrical data and ranges

Maximum operating current	[A]	9.0
Power consumption - cooling	[kW]	0.71
Power consumption - heating	[kW]	0.69
Power supply		230V/1Ph/50Hz
Outdoor operating temperature range - cooling	[°C]	-15~46
Outdoor operating temperature range - heating	[°C]	-15~24

Acoustic data

Sound pressure - cooling	[dB(A)]	47.0
Sound pressure - heating	[dB(A)]	45.0
Sound power - cooling	[dB(A)]	57.0
Sound power - heating	[dB(A)]	56.0

Installation restrictions

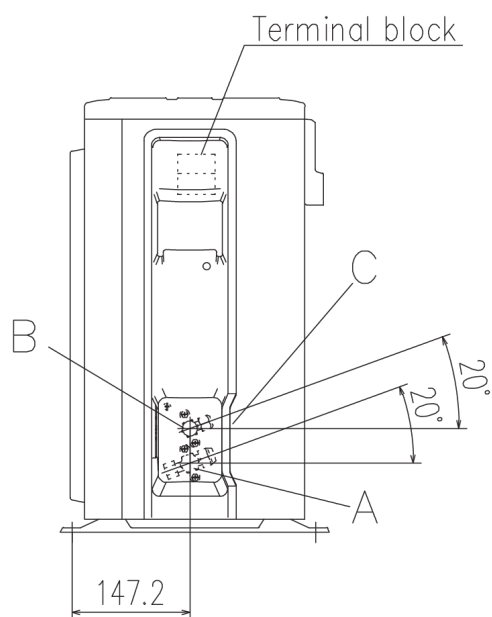
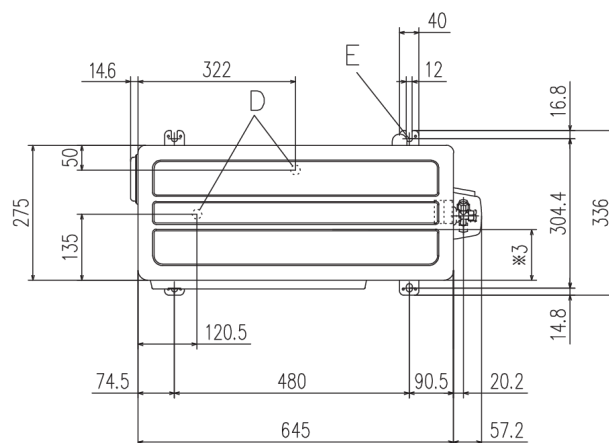
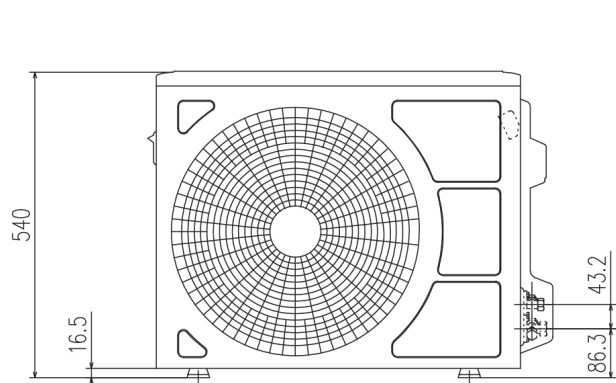
Maximum refrigerant line length	[m]	15
Refrigerant line chargeless length	[m]	10
Vertical height differences (outdoor is lower)	[m]	10
Vertical height differences (outdoor is higher)	[m]	10
Additional refrigerant charge	[g/m]	20

Dimensions

Height	[mm]	540
Length	[mm]	702
Width	[mm]	275
Net weight	[kg]	26.5

Refrigerant

Refrigerant		R32
GWP		675
Refrigerant charge	[kg]	0.55
CO2 equivalent	[t]	0.371



A. Connection Gas	[mm]	9.52
A. Connection Gas	[inch]	3/8
B. Connection Liquid	[mm]	6.35
B. Connection Liquid	[inch]	1/4

C. Pipe/cable draw-out hole	
D. Drain discharge hole	ø20
E. Anchor bolt hole	M10-12
