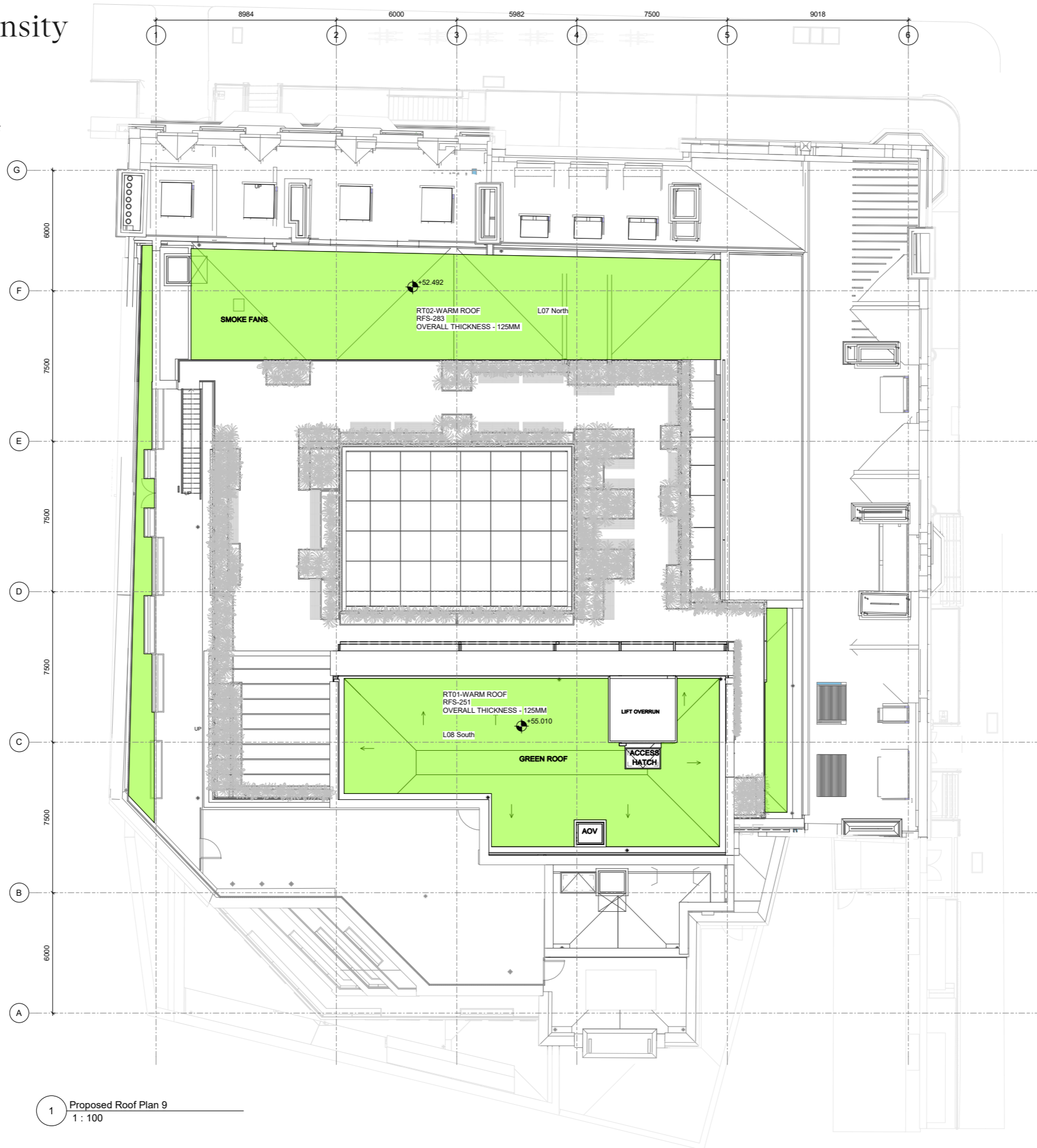


Condition 10









iii. Planting Species + Density

Overall GA to show Locations + Density of Green Roof

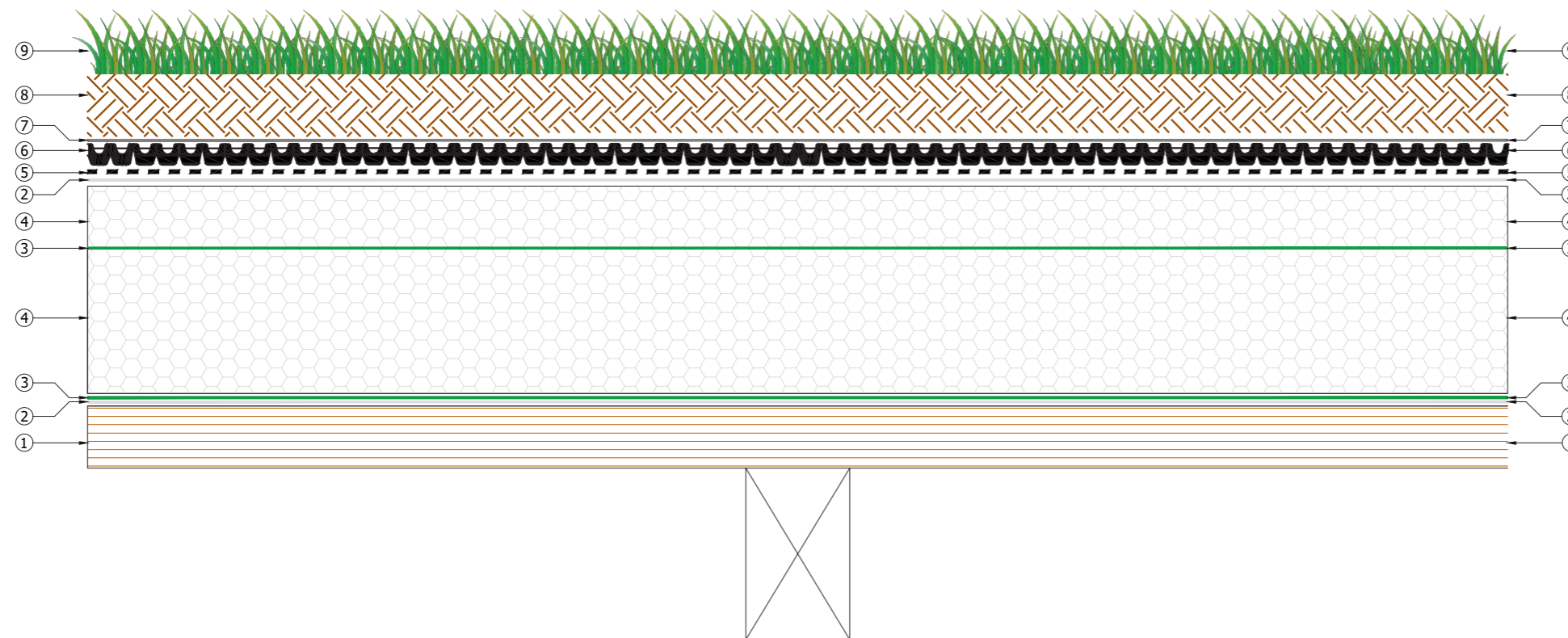


Condition 10

iii. Planting Species + Density

- ① Substrate prepared in strict accordance with Proteus Project Specification
- ②  Proteus Pro-Vapour Control/ Carrier Membrane SA applied with Pro-Prime SA
- ③  Proteus Pro-Bond Foaming Adhesive
- ④  Proteus Pro-Therm PIR (Thickness Varies)
- ⑤  Proteus Cold-Melt® System
- ⑥  Proteus Pro-Living® DR10 Drainage Board
- ⑦  Proteus Pro-Living® VLF-150
- ⑧  Proteus Pro-Living® Growing Medium
- ⑨  Proteus Pro-Living® Sedum

Minimum settled depth of 80mm - ref roof types - sheet 1 (p.14)



PRELIMINARY

Construction Notes:

- 1. This drawing relates specifically to the detailing of the waterproofing.
- 2. Building details shown are an indication of typical construction only, and may vary to actual site conditions.

NB : Refer to Proteus Specification for full product details.

Proteus Waterproofing Ltd.

21a Sirdar Road,
Brook Road Industrial Estate,
Rayleigh, Essex, SS6 7XF

Tel: +44 (0)1268 777871

W: www.proteuswaterproofing.co.uk

E: office@proteuswaterproofing.co.uk

Notes :

This drawing is solely intended to illustrate the correct application of Proteus Waterproofing Ltd's products and systems. All other elements bearing reference to structural and/or thermal design within the detail are shown indicatively and should not be used in whole or part for any aspect of project design without consulting the relevant authorities.

For refurbishment projects, all aspects of the existing roof are deemed to be fully compliant with BS6229 : 2018 (Code of practice for flat roofs with continuously supported coverings) or improved upon for instances where these standards are not met.

Site specific details not covered by our range of Standard Details can be obtained by providing relevant information to the email address shown.

© This Drawing is the copyright of Proteus Waterproofing Ltd.

| | |
|--------------|-----------|
| Drawing No.: | Revision: |
| 1 | A |

Description:
**Bloomsbury Street,
RT-01 L07 Amenity Roof.**

| | | |
|--------|--------|------------|
| Scale: | Drawn: | Date: |
| NTS | D.Q. | 19/01/2024 |



S + T

T: +44 (0)20 8960 5550
E: mail@stiffandtrevillion.com
16 Woodfield Road, London W9 2BE