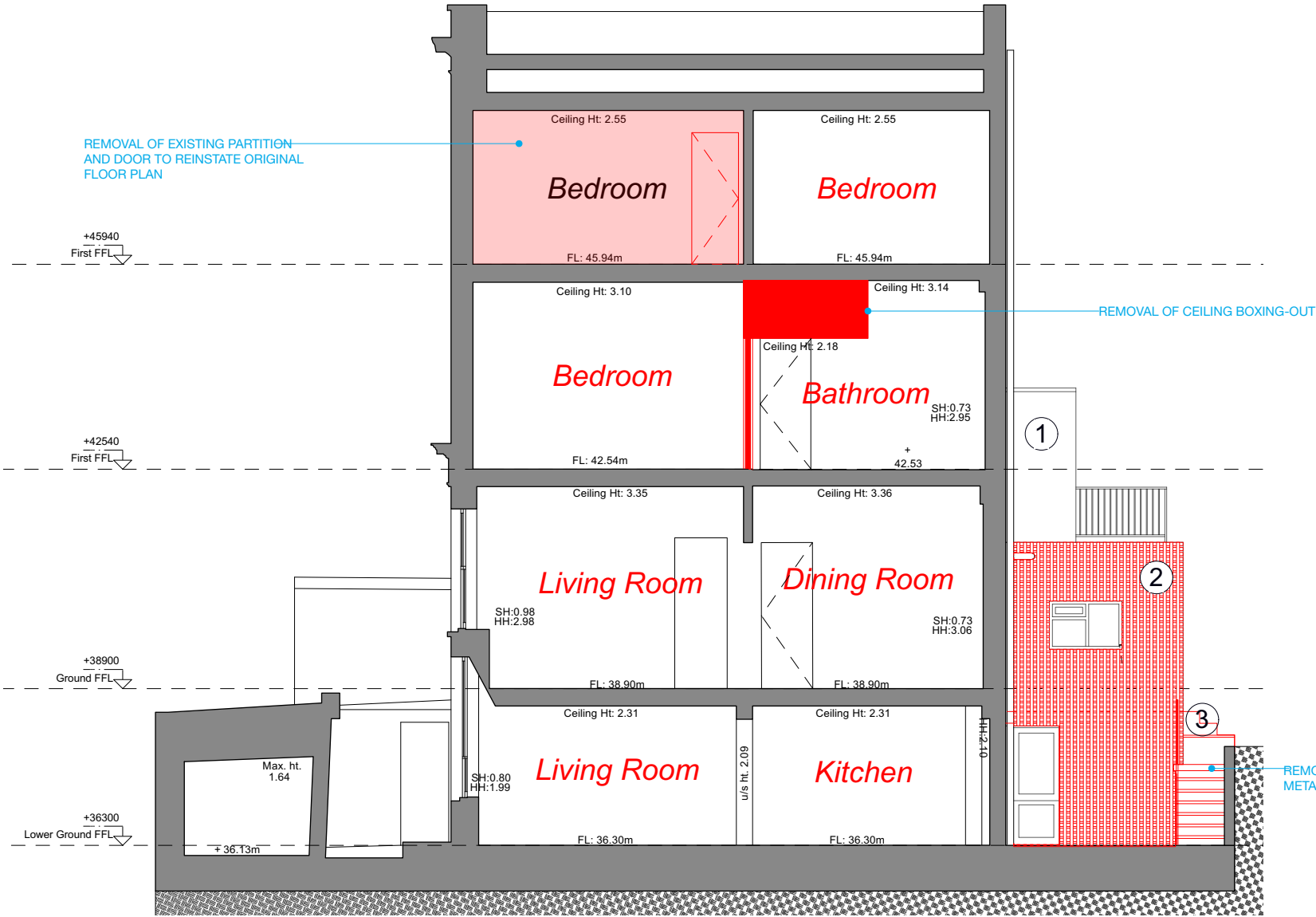


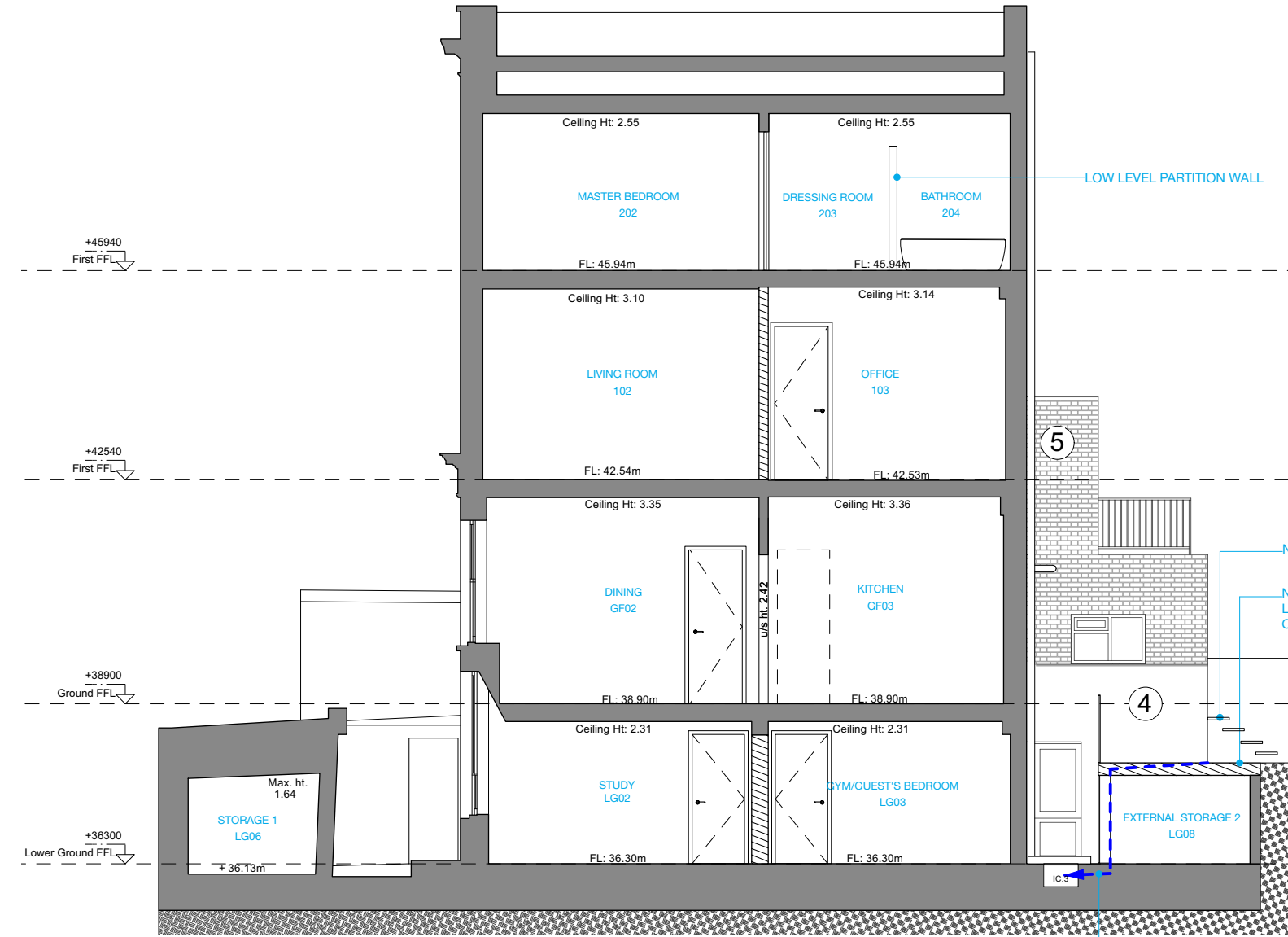
© This drawing is the property of Miltiadou Cook Mitzman architects. No disclosure or copy of it may be made without the written permission of Miltiadou Cook Mitzman architects.

For construction purposes:
- Do not scale this drawing.
- All dimensions and levels to be checked on site.
- Discrepancies to be reported to Miltiadou Cook Mitzman architects before proceeding.
- If in any doubt about information on this drawing contact Miltiadou Cook Mitzman architects.

REVISION NUMBER	DATE	BY	NOTES
P1	02/02/2024	OS	Issued for planning
P2	15/05/2024	OS	Issued revisions for planning



1 Section AA-Existing&Demolition
1:100

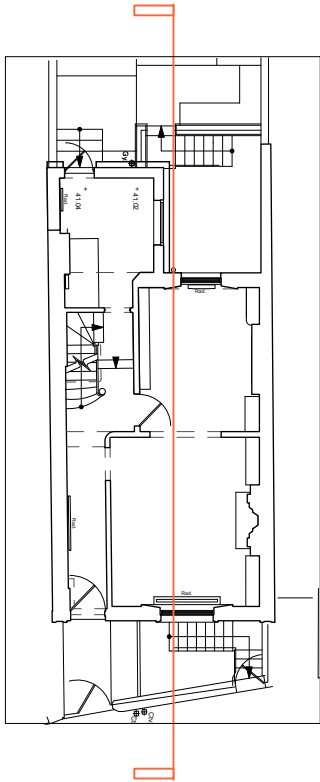


2 Section AA-Proposed
1:100

MATERIALS:

1. WHITE PAINTED BRICKWORK (REMOVE PAINT)
2. EXTERNAL TIMBER TRELLIS (DEMO)
3. MANSONRY STAIRS (DEMO)
4. WHITE PAINTED RENDER WALL-REPAINTED (RETAINED)
5. YELLOW STOCK BRICKWORK (EXPOSED AND RETAINED)

	PROPOSED BUILD UP
	EXISTING BUILD UP
	DEMOLITION
	WASTE PIPE DIRECTION



0 0.5 1.0 M

MILTIADOU COOK MITZMAN architects llp

020 7722 8525 10-12 Emerald Mews
office@mcma.design London
www.mcma.design WC1N 3QA

CLIENT
Ian & Susan Ferguson

PROJECT
7 Sharpleshall Street, NW1 8YL

SHEET TITLE
Section AA-Existing, Demolition and Proposed

SCALE
AS NOTED@A3

DATE CREATED **FILE REFERENCE**

DRAWING NUMBER	REVISION
408-DWG-006	P2