

© This drawing is the property of Miltiadou Cook Mitzman architects. No disclosure or copy of it may be made without the written permission of Miltiadou Cook Mitzman architects.

**For construction purposes:**

- Do not scale this drawing.
- All dimensions and levels to be checked on site.
- Discrepancies to be reported to Miltiadou Cook Mitzman architects before proceeding.
- If in any doubt about information on this drawing contact Miltiadou Cook Mitzman architects.

REVISION	NUMBER	DATE	BY	NOTES
	P1	02/02/2024	OS	Issued for planning
	P2	15/05/2024	OS	Issued revisions for planning

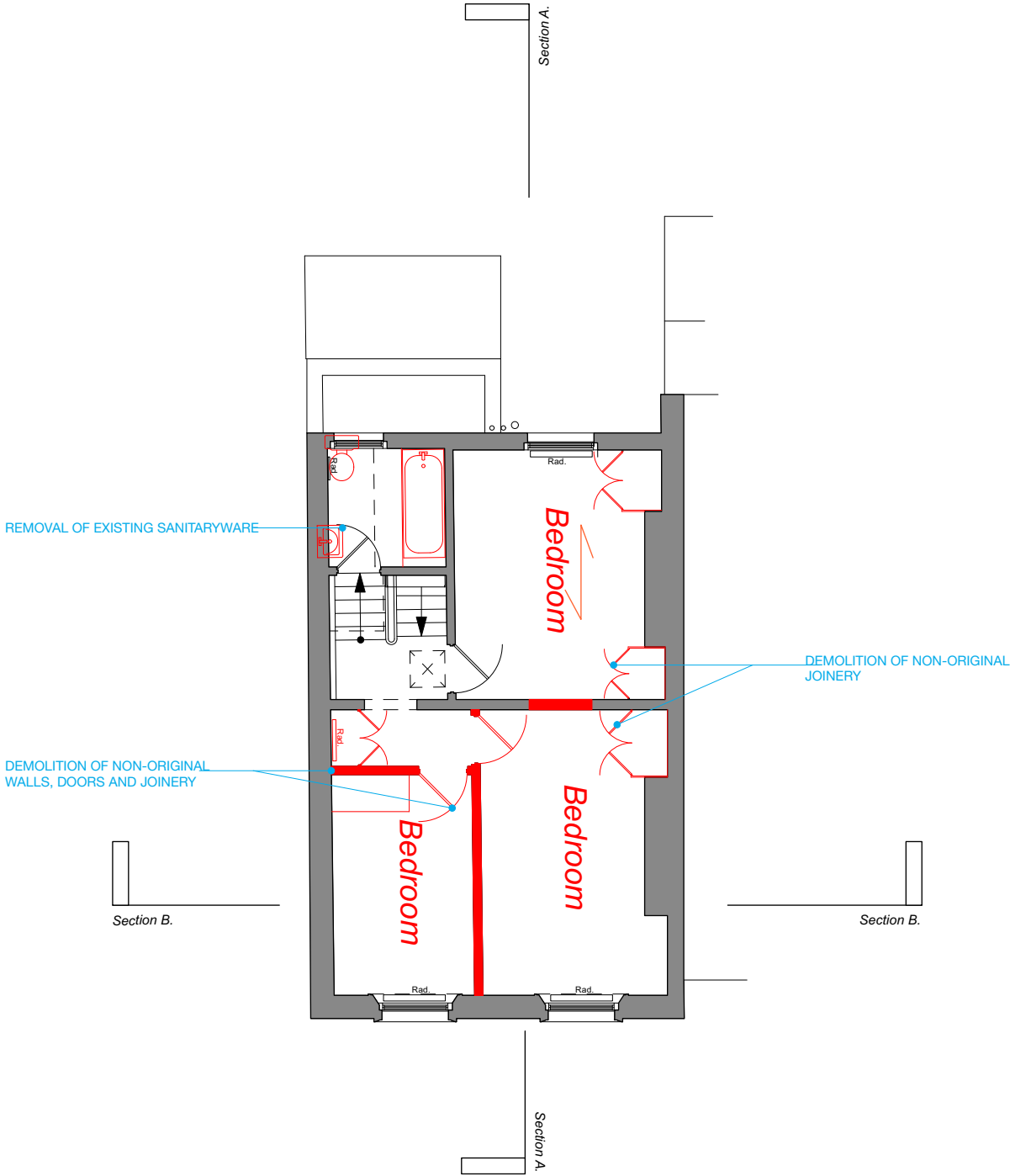
PROPOSED BUILD UP

EXISTING BUILD UP

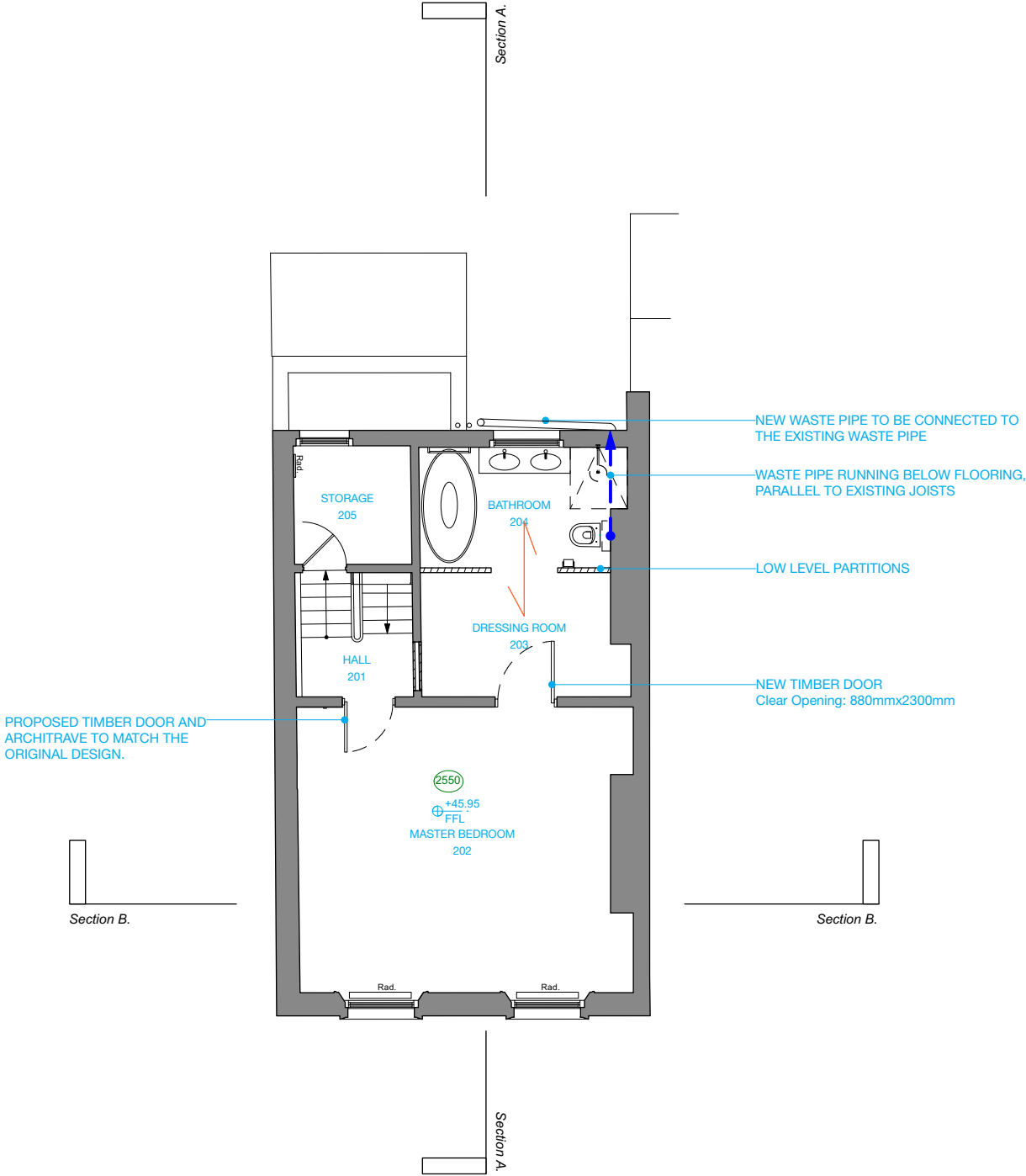
DEMOLITION

WASTE PIPE DIRECTION

JOISTS DIRECTION



1 Second Floor Plan-Existing & Demolition  
1:100



2 Second Floor Plan-Proposed  
1:100



MCMa

MILTIADOU  
COOK  
MITZMAN architects llp

020 7722 8525  
office@mcma.design  
www.mcma.design

10-12 Emerald Mews  
London  
WC1N 3QA

CLIENT  
Ian & Susan Ferguson

**PROJECT**  
7 Sharpleshall Street, NW1 8YL

**SHEET TITLE**  
Second Floor Plan-Existing, Demolition and Proposed

**SCALE**  
AS NOTED@A3

**DATE CREATED** **FILE REFERENCE**

DRAWING NUMBER	REVISION
408-DWG-004	P2