

© This drawing is the property of Miltiadou Cook Mitzman architects. No disclosure or copy of it may be made without the written permission of Miltiadou Cook Mitzman architects.

For construction purposes:

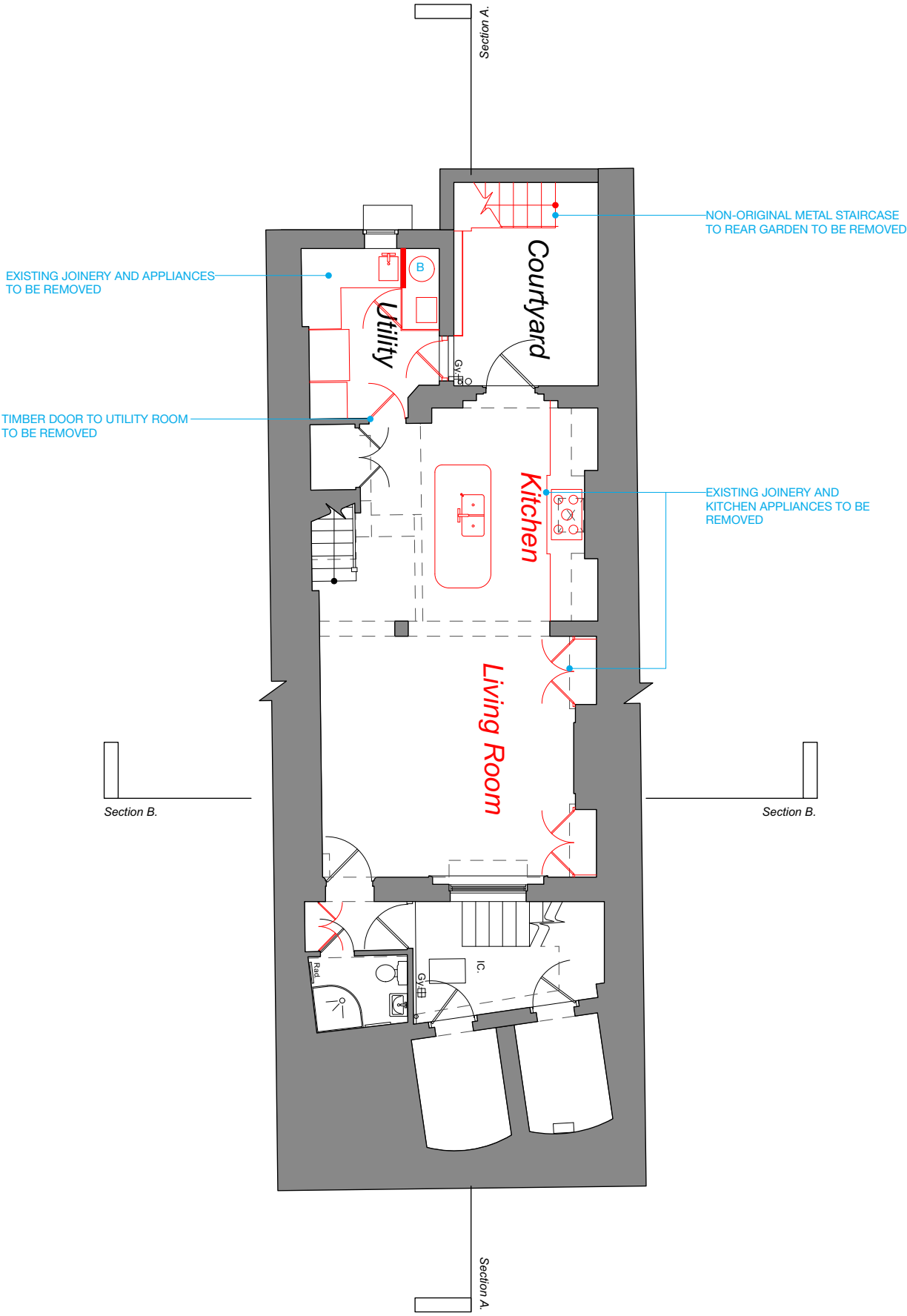
- Do not scale this drawing.
- All dimensions and levels to be checked on site.
- Discrepancies to be reported to Miltiadou Cook Mitzman architects before proceeding.
- If in any doubt about information on this drawing contact Miltiadou Cook Mitzman architects.

| REVISION | NUMBER | DATE | BY | NOTES |
|----------|------------|------|-------------------------------|-------|
| P1 | 02/02/2024 | OS | Issued for planning | |
| P2 | 15/05/2024 | OS | Issued revisions for planning | |

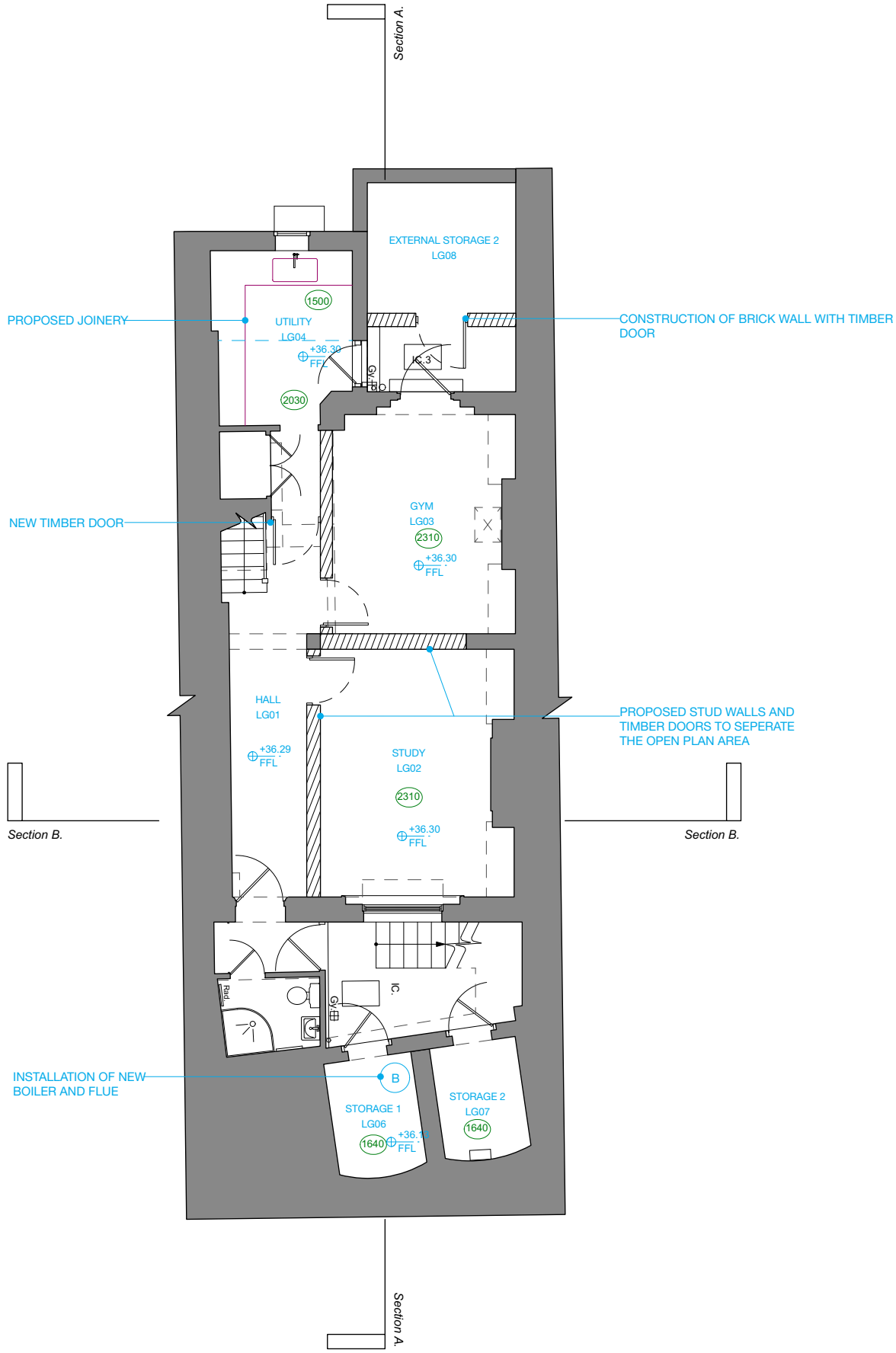
PROPOSED BUILD UP

EXISTING BUILD UP

DEMOLITION



1 Lower Ground Floor Plan-Existing & Demolition
1:100



2 Lower Ground Floor Plan-Proposed
1:100



MCMa

MILTIADOU
COOK
MITZMAN architects llp

020 7722 8525
office@mcma.design
www.mcma.design

10-12 Emerald Mews
London
WC1N 3QA

CLIENT
Ian & Susan Ferguson

PROJECT
7 Sharpleshall Street, NW1 8YL

SHEET TITLE
Lower Ground Floor Plan-Existing,
Demolition and Proposed

SCALE
AS NOTED@A3

DATE CREATED **FILE REFERENCE**

| DRAWING NUMBER | REVISION |
|----------------|----------|
| 408-DWG-001 | P2 |