

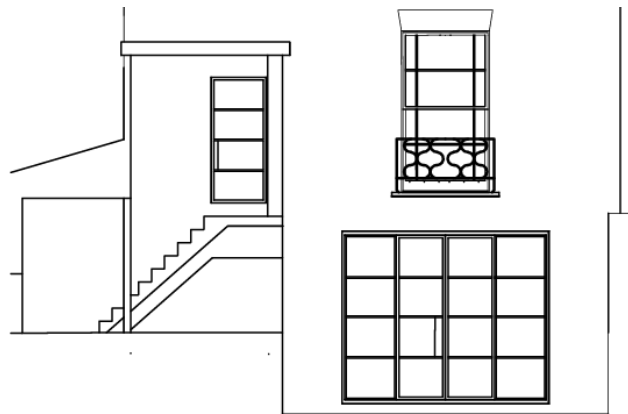
## 2024/0959/P

Rochester Conservation Area statement (2003) seeks to retain the character and quality of the Regency gardens, acting against loss of traditional materials and original features.

The application proposes to replace the lower ground floor rear sash window with a 'four-panel glazed arrangement with central opening doors, this would be a metal framed style design with narrow section framing in steel and powder coated.'



Existing (from 2009/0669/P)



Proposed 2024/0959/P

The lower ground floor sash window and gauged brick arch would be a significant loss to the Regency design of the rear elevation.

The proposal picture shows a rectangle of 16 panes and considers it will have little visibility – although there are 3-storey houses behind Bartholomew Road. More information on the design, to match the Regency above, would be welcome.

The balcony on the first floor is represented with three-panel sash window, welcomingly more interesting and found elsewhere around Rochester Terrace Gardens, yet the 'existing' (as of 2009 photo) shows paned double doors. What is proposed?