

Proposed and Existing Photo Sheet – The Lockhouse

Existing – Zinc Cladding (typically found to penthouses to the top 1-3 storeys of various elevations as well as a vertical section of zinc cladding stretching from ground level to the 8th floor of the east elevation of the standalone tower)

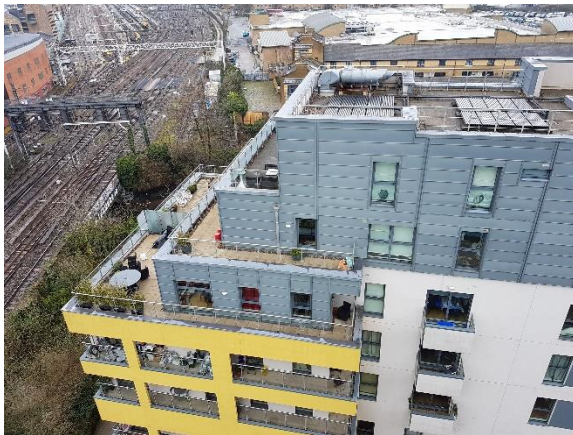
Zinc cladding including all associated combustible timber plywood sheeting board substrates, support systems, trims, cappings and flashings, waterproofing etc.

Proposed – New non-combustible cladding panels in place of the existing zinc cladding, including all trims, capping's, flashings etc, all associated substrates, support systems, waterproofing etc.

Urban Seam® standing seam façade system consists of an A1 rated pre-finished steel fixed to a Trisobuild® D32s carrier sheet and therefore meet the requirement of the latest Building Regulations.

<https://www.tatasteeleurope.com/ts/construction/products/wall/facades/urban-seam>

Existing:



Tata Steel Urban Seam cladding sheet:



Existing – Aluminium Spandrel Panels
(typically found to the north/ canal
elevation at ground and 1st floor level and
also spanning from ground to 4th floor level
in three locations)

Combustible aluminium spandrel panels.

Proposed – New non-combustible spandrel
panels in place of the existing combustible
aluminium spandrel panels, including all trims,
capping's, flashings etc, all associated
substrates, support systems, waterproofing etc.

Non-combustible Newbrel Spandrel Panels
including non-combustible mineral fibre
insulation.

<http://www.newbrel.com/index.shtml>

Existing:



Newbrel Spandrel Panels including mineral fibre
insulation:

Replacement non-combustible spandrel panels
to match the existing style and colour.

