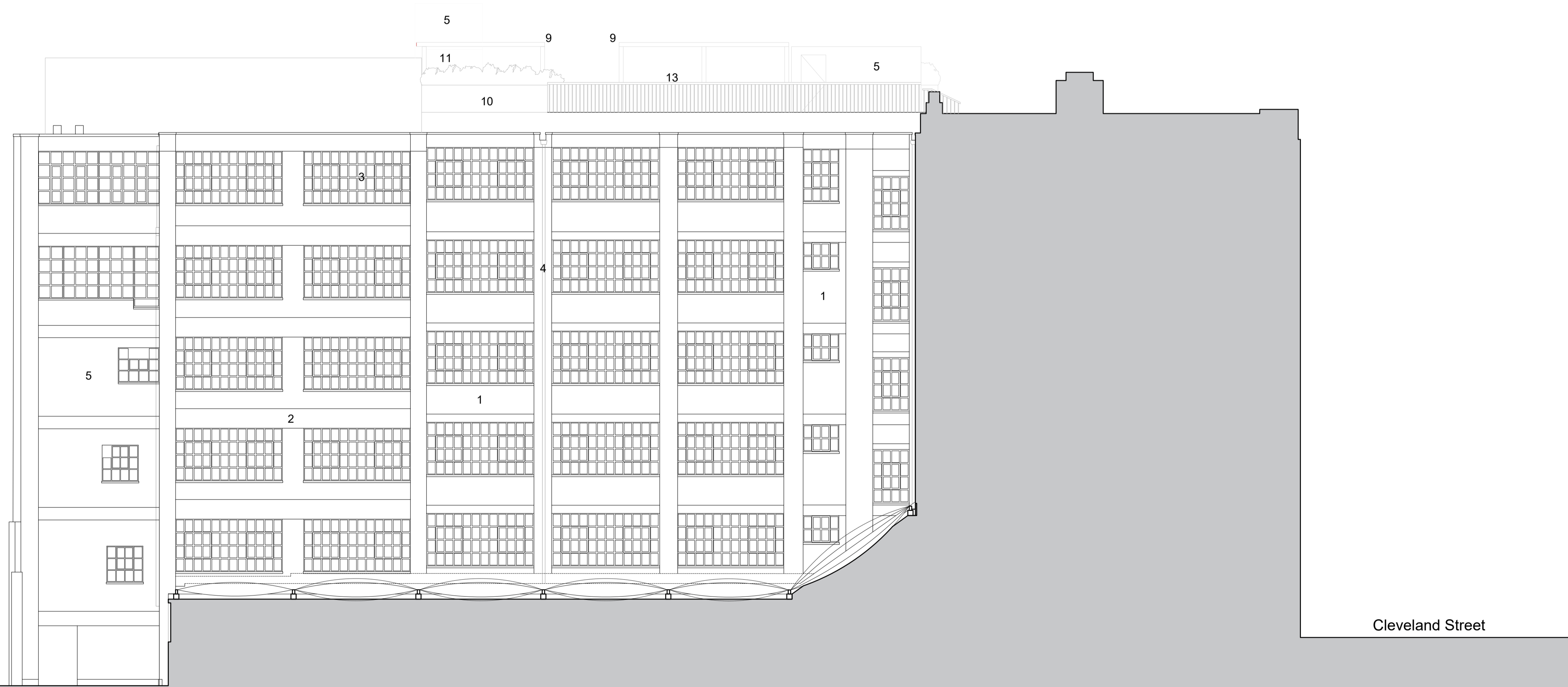


NOTES  
 Fletcher Priest Architects is a Limited Liability Partnership registered in England and Wales (OC336568) at the below address. = this drawing is to be read in conjunction with the design risk assessment prepared by fpa. = this drawing is to be read in conjunction with other drawings and specification produced by fpa and other members of the design team. = all dimensions are in millimeters unless otherwise stated. = do not scale this drawing. = any discrepancies in dimensions are to be reported to the architect. = all information subject to detail site survey.

Key

1. Brickwork
2. White render
3. Dark-metal framed windows (refer to separate application)
4. Pipework
5. White painted brickwork
6. Dark Grey louvres to match existing
7. Dark Grey painted steel, clear glazing
8. Internal film to glazing
9. Powder coated steel structure painted red
10. Powder coated aluminium planters painted in dark grey
11. Galvanised metal painted in red
12. Glass blocks
13. Metal balustrade painted in white



REV	DESCRIPTION	BY	CHK	DATE
P00	Planning Issue	EC	CR	25.04.2024

PLANNING

DERWENT  
MIDDLESEX HOUSE

16 PLANNING

PROPOSED  
NORTH ELEVATION

DRAWING NUMBER / REVISION  
1795-FPA-XX-ZZ-DR-A-16203

SCALE  
1:100@A1

DATE / DRAWN BY / CHECKED BY  
27.03.2024 EC / CR

**fletcher priest architects**  
london + köln + riga

middlesex house  
34/42 cleveland st  
london W1T 4JE  
t +44 (0)20 7034 2200  
f +44 (0)20 7637 5347  
www.fletcherpriest.com