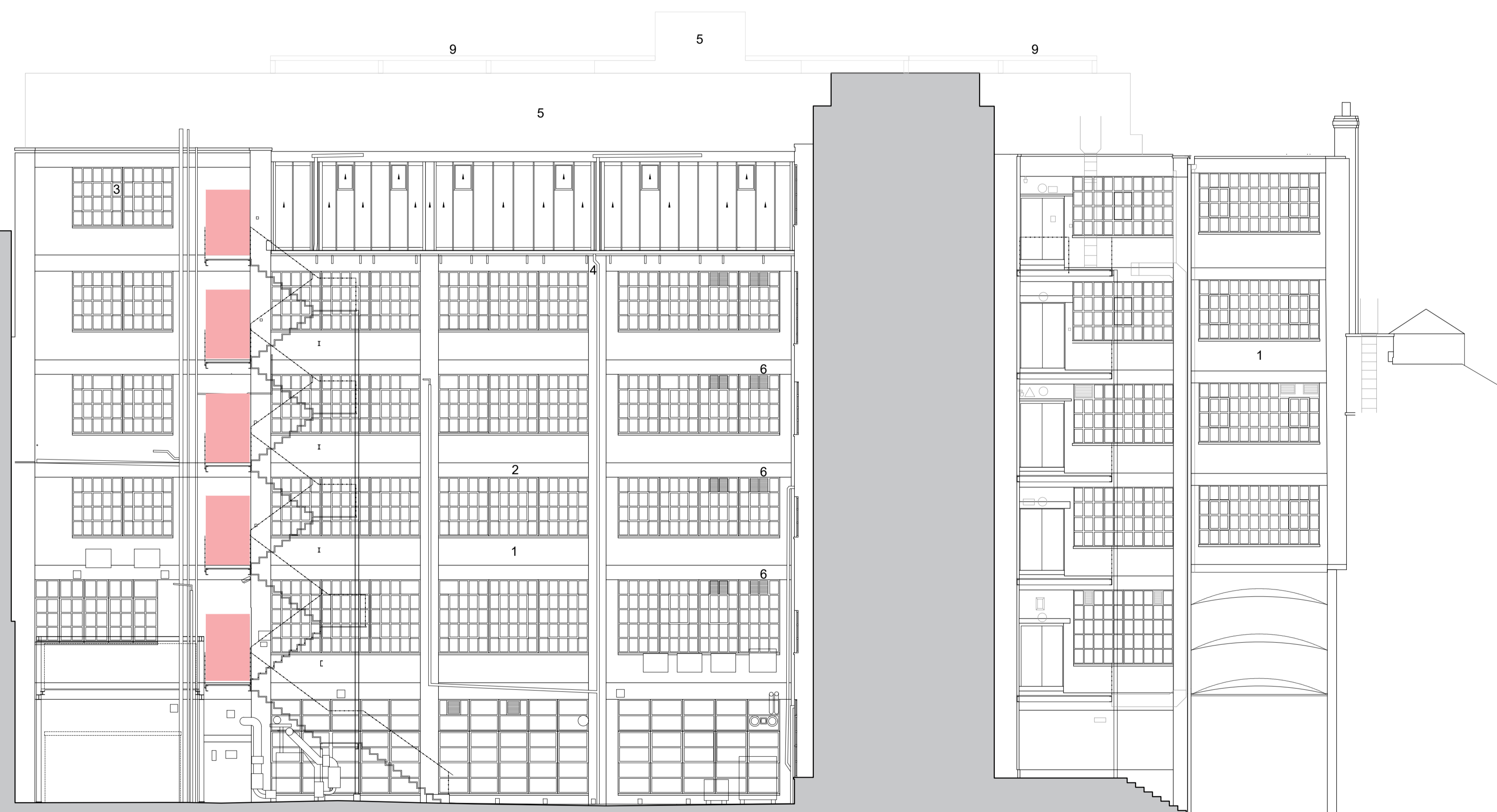


NOTES
 Fletcher Priest Architects is a Limited Liability Partnership registered in England and Wales (OC336568) at the below address. = this drawing is to be read in conjunction with the design risk assessment prepared by fpa. = this drawing is to be read in conjunction with other drawings and specification produced by fpa and other members of the design team. = all dimensions are in millimeters unless otherwise stated. = do not scale this drawing. = any discrepancies in dimensions are to be reported to the architect. = all information subject to detail site survey.

Key

- Existing redundant fire escape doors removed and infilled with brickwork to match existing

- 1. Brickwork
- 2. White render
- 3. Dark-metal framed windows (refer to separate application)
- 4. Pipework
- 5. White painted brickwork
- 6. Dark Grey louvres to match existing
- 7. Dark Grey painted steel, clear glazing
- 8. Internal film to glazing
- 9. Powder coated steel structure painted red
- 10. Powder coated aluminium planters painted in dark grey
- 11. Galvanised metal painted in red
- 12. Glass blocks
- 13. Metal balustrade painted in white



P01	Planning Issue Updated	EC	PV	23.05.2024
P00	Planning Issue	EC	CR	25.04.2024
REV	DESCRIPTION	BY	CHK	DATE

PLANNING

**DERWENT
MIDDLESEX HOUSE**

16 PLANNING

**PROPOSED
EAST ELEVATION**

DRAWING NUMBER / REVISION
1759-FPA-XX-ZZ-DR-A-16200

SCALE
1:100@A1

DATE / DRAWN BY / CHECKED BY
23.05.2024 EC / PV

fletcher priest architects
london + köln + riga
 middlesex house
 34/42 cleveland st
 london W1T 4JE
 t +44 (0)20 7034 2200
 f +44 (0)20 7637 5347
 www.fletcherpriest.com