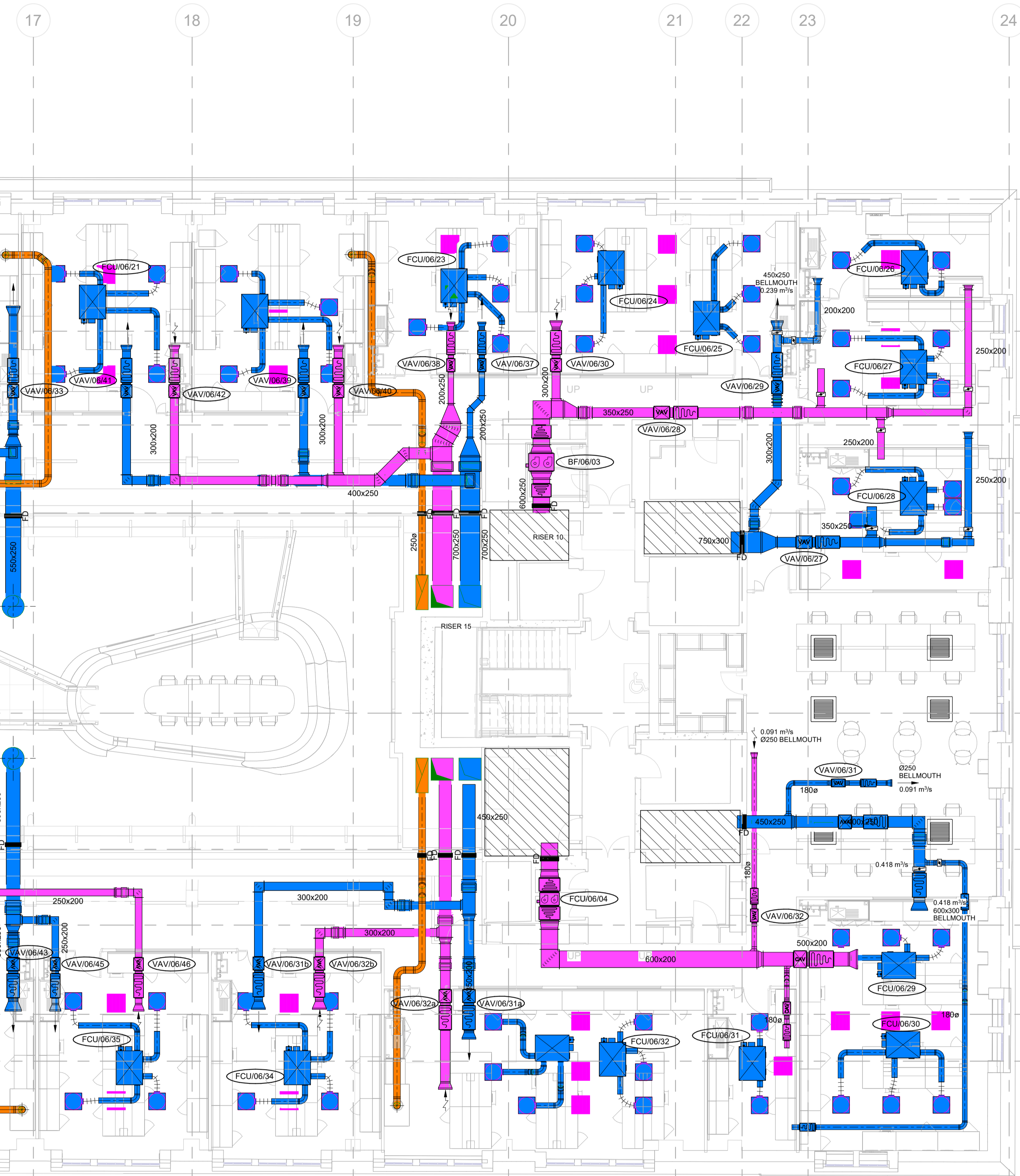


NOTES:

- DO NOT SCALE FROM THIS DRAWING.
1. THIS DRAWING SHALL BE READ IN CONJUNCTION WITH THE MECHANICAL SPECIFICATION, THE ARCHITECTS DIMENSIONED LAYOUTS AND ALL OTHER RELEVANT CONTRACT DOCUMENTATION.
 2. ALL MECHANICAL VENTILATION DUCTWORK SHALL BE GALVANISED SHEET METAL DUCTWORK SUPPLIED AND INSTALLED IN ACCORDANCE WITH HVCA DW/144
 3. ANY DUCTWORK PENETRATING A FIRE RATED BARRIER OR STRUCTURE SHALL INCORPORATE A SUITABLY RATED FIRE DAMPER
 4. ALL FIRE DAMPERS TO BE FULLY ACCESSIBLE. THIS ACCESS WILL REQUIRE DUCT ACCESS DOORS AND WHERE REQUIRED REMOVABLE CEILING SECTIONS
 5. THE CONTRACTOR SHALL ALLOW FOR TESTING, COMMISSIONING AND SETTING TO WORK ALL VENTILATION SYSTEMS IN ACCORDANCE WITH THE CIBSE COMMISSIONING CODE 'A' AND THE RELEVANT BSRIA APPLICATION GUIDES
 6. THE MECHANICAL CONTRACTOR SHALL BE RESPONSIBLE FOR THE CO-ORDINATION OF THEIR WORKS WITH ALL OTHER TRADES

LEGEND:

- FRESH AIR DUCTWORK
- EXHAUST AIR DUCTWORK
- SUPPLY AIR DUCTWORK
- EXTRACT AIR DUCTWORK
- FUME EXHAUST AIR DUCTWORK
- TENANT FIT-OUT DUCTWORK
- X DUCT ACCESS DOOR
- VAV VAV BOX
- CAV CAV BOX
- FD FIRE DAMPER
- SD SMOKE DAMPER
- ~ DUCT ATTENUATOR
- ~ CROSSTALK ATTENUATOR
- V VOLUME CONTROL DAMPER
- F BOOSTER FAN
- RETURN AIR GRILLE
- FUME CUPBOARD/BSC



SUIT-REV	DATE	DESCRIPTION	TE	AG
S4-P01	26/01/2024	STAGE 3 CAT-B ISSUE	TE	AG

STAGE 3

THIS DRAWING IS COPYRIGHT. DO NOT SCALE FROM DRAWING. THE CONTRACTOR AND THEIR SUB-CONTRACTORS ARE TO VERIFY ALL DIMENSIONS ON SITE BEFORE MAKING SHOP DRAWINGS OR COMMENCING MANUFACTURE.

KJ TAIT
ENGINEERS

1 Fitzroy Square
London W1T 5HF
T +44 (0) 207 388 0952
E kington@kjtait.com
W www.kjtait.com

PROJECT INFORMATION			
CLIENT	OXFORD VICTORIA HOUSE DEVELOPMENT LTD		
PROJECT	LONDON, WC1B 4DA		
DRAWING INFORMATION			
DRAWING TITLE	MECHANICAL SERVICES 6TH FLOOR VENTILATION LAYOUT SHEET 2 of 2		
DESIGNED BY	TE	DATE	JAN 2024
DRAWN BY	MZ	KJT JOB No.	L3221
SCALE	1 : 100 @ A1		L3221
JOB CODE	ORIGIN-VOL-LEVEL-TYPE-ROLE-CLASS NUMBER	SUIT-REV	
L3221	KJT-02-06-DR-M-5710	S4 - P01	