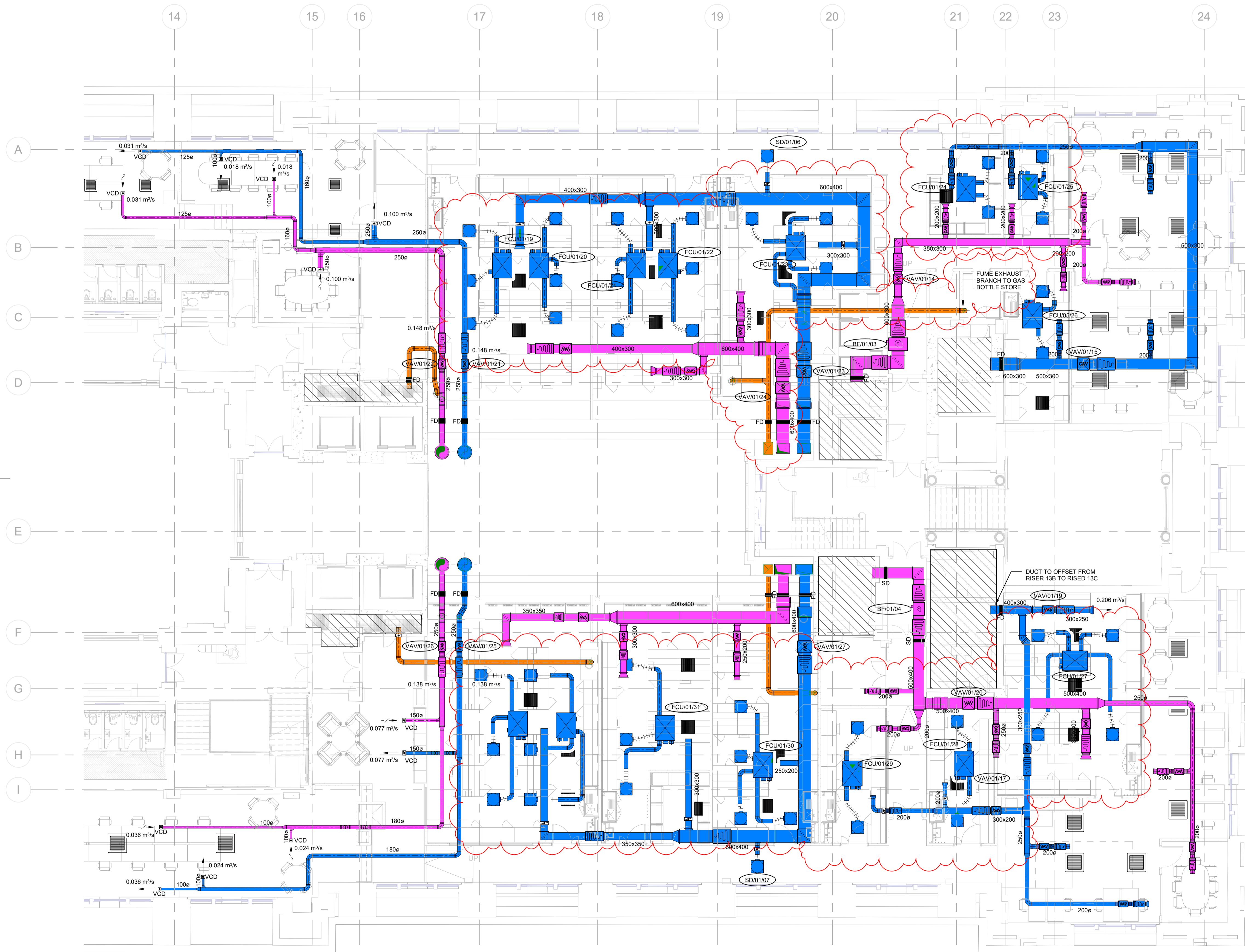


- NOTES:**
DO NOT SCALE FROM THIS DRAWING.
- THIS DRAWING SHALL BE READ IN CONJUNCTION WITH THE MECHANICAL SPECIFICATION, THE ARCHITECTS DIMENSIONED LAYOUTS AND ALL OTHER RELEVANT CONTRACT DOCUMENTATION.
 - ALL MECHANICAL VENTILATION DUCTWORK SHALL BE GALVANISED SHEET METAL DUCTWORK SUPPLIED AND INSTALLED IN ACCORDANCE WITH HVCA DW/144.
 - ANY DUCTWORK PENETRATING A FIRE RATED BARRIER OR STRUCTURE SHALL INCORPORATE A SUITABLY RATED FIRE DAMPER.
 - ALL FIRE DAMPERS TO BE FULLY ACCESSIBLE. THIS ACCESS WILL REQUIRE DUCT ACCESS DOORS AND WHERE REQUIRED REMOVABLE CEILING SECTIONS.
 - THE CONTRACTOR SHALL ALLOW FOR TESTING, COMMISSIONING AND SETTING TO WORK ALL VENTILATION SYSTEMS IN ACCORDANCE WITH THE CIBSE COMMISSIONING CODE 'A' AND THE RELEVANT BSRIA APPLICATION GUIDES.
 - THE MECHANICAL CONTRACTOR SHALL BE RESPONSIBLE FOR THE CO-ORDINATION OF THEIR WORKS WITH ALL OTHER TRADES.

- LEGEND:**
- FRESH AIR DUCTWORK
 - EXHAUST AIR DUCTWORK
 - SUPPLY AIR DUCTWORK
 - EXTRACT AIR DUCTWORK
 - FUME EXHAUST AIR DUCTWORK
 - TENANT FIT-OUT DUCTWORK
 - DUCT ACCESS DOOR
 - VAV BOX
 - CAV BOX
 - FIRE DAMPER
 - SMOKE DAMPER
 - DUCT ATTENUATOR
 - CROSSTALK ATTENUATOR
 - VOLUME CONTROL DAMPER
 - BOOSTER FAN
 - RETURN AIR GRILLE



S4-P02	10/04/2024	STAGE 3 CAT-B ISSUE	AG	MT
S4-P01	26/01/2024	STAGE 3 CAT-B ISSUE	TE	AG
SUIT-REV	DATE	DESCRIPTION	DRN	CHK
STATUS				

STAGE 3

THIS DRAWING IS COPYRIGHT. DO NOT SCALE FROM DRAWING. THE CONTRACTOR AND THEIR SUB-CONTRACTORS ARE TO VERIFY ALL DIMENSIONS ON SITE BEFORE MAKING SHOP DRAWINGS OR COMMENCING MANUFACTURE.

KJ TAIT
ENGINEERS
1 Fitzroy Square
London W1T 5HF
T +44 (0) 207 388 0952
E london@kjtait.com
W www.kjtait.com

PROJECT INFORMATION			
CLIENT	OXFORD VICTORIA HOUSE DEVELOPMENT LTD LONDON, WC1B 4DA		
DRAWING INFORMATION			
DRAWING TITLE	MECHANICAL SERVICES 1ST FLOOR VENTILATION LAYOUT SHEET 2 of 2		
DESIGNED BY	TE	DATE	JAN 2024
DRAWN BY	MZ	KJT JOB No.	
SCALE	1 : 100 @ A1	L3221	
JOB CODE	ORIGIN-VOL-LEVEL-TYPE-ROLE-CLASS NUMBER	SUIT-REV	
L3221	KJT-02-01-DR-M-5710	S4 - P02	