

**NOTES:**

DO NOT SCALE FROM THIS DRAWING.

1. THE DETAIL ON THIS DRAWING IS SPECIFIC TO INTERNAL ABOVE GROUND DRAINAGE AND EXCLUDES BELOW GROUND DRAINAGE, SURFACE WATER DRAINAGE AND RAINWATER DRAINAGE.
2. THE COMPLETED SYSTEM SHALL BE A GRAVITY DRAINED SYSTEM UTILISING WHITE/GREY UPVC PIPEWORK AND FITTINGS TO DISTRIBUTE WASTE FROM ALL APPLIANCES LOCATED WITHIN THE BUILDING TO APPROPRIATE POP-UP CONNECTIONS FROM THE BELOW GROUND DRAINAGE SYSTEM DETAILED BY OTHERS.
3. ALL NEW FINAL APPLIANCE CONNECTIONS WILL BE WHITE MUPVC INCORPORATING MUPVC TRAPS FOR SINK, BASIN AND URINAL CONNECTIONS AND PROPRIETARY UPVC PAN CONNECTORS FOR WC CONNECTIONS.
4. ALL TRAPS TO BE OF THE ANTI-SYPHON TYPE TO PROTECT TRAP CONNECTIONS FROM LOSS OF WATER SEAL.
5. ALL MAIN SOIL/WASTE VENT PIPES SHALL RISE TO ROOF LEVEL AND TERMINATE WITH A VENT COWL, BEFORE DISCHARGING TO ATMOSPHERE (NOTE THAT SOME VENT PIPES WILL BE COLLECTED TOGETHER WITHIN THE UPPER FLOOR CEILING BEFORE RISING TO ROOF LEVEL TO REDUCE NUMBER OF ROOF PENETRATIONS).
6. WHERE INDICATED ON THE DRAWINGS APPLIANCES TO BE VENTED USING SUITABLY SIZED AIR ADMITTANCE VALVES.
7. FALLS ON SOIL WASTE PIPES AND VENT PIPES SHALL NOT FALL BELOW THE MINIMUM STATED IN BS EN 12056:2000.
8. SUITABLE ACCESS SHALL BE PROVIDED AND ALL CHANGES OF DIRECTION, AT EACH FLOOR LEVEL ABOVE BRANCH CONNECTIONS AND AT THE ALL POP-UP CONNECTIONS TO THE BELOW GROUND DRAINAGE.
9. WHERE PLASTIC PIPEWORK PASSES THROUGH ANY FIRE RATED WALLS, FLOORS, PARTITIONS OR CEILING A SUITABLY RATED INTUMESCENT FIRE SLEEVE/COLLAR SHALL BE INSTALLED IN ACCORDANCE WITH BS276 TO PROTECT THE PENETRATION.

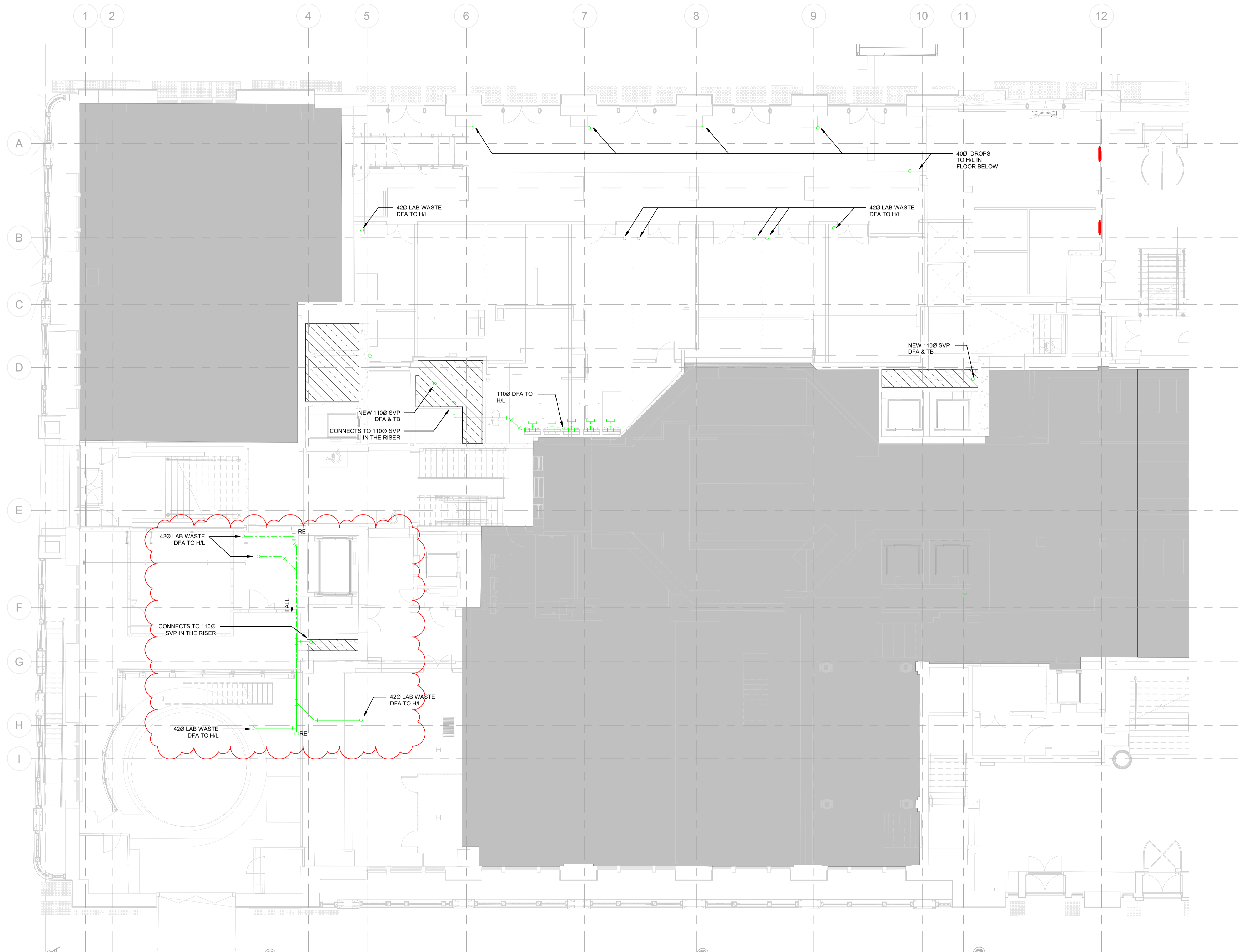
**ABBREVIATIONS:**

- |   |   |
|---|---|
| ① | 32x75mm DEEP SEAL MUPVC BOTTLE TRAP TO EACH WHB         |
| ② | 42x75mm DEEP SEAL MUPVC TUBULAR TRAP TO EACH SINK       |
| ③ | 42x75mm DEEP SEAL MUPVC BOTTLE TRAP SERVING URINAL BOWL |
| ④ | 110Ø MULTIKWIC CONNECTOR TO WC PAN                      |
| ⑤ | 32Ø MUPVC WP  |
| ⑥ | 42Ø MUPVC WP  |
| ⑦ | 50Ø MPVC WP   |
| ⑧ | 82Ø UPVC WP   |
| ⑨ | 110Ø UPVC SP  |
| ⑩ | CLAY TRAP WITH 50Ø MUPVC INLET & OUTLET                 |
| ⑪ | 50Ø INTUMESCENT FIRE COLLAR/SLEEVE                      |
| ⑫ | 82Ø INTUMESCENT FIRE COLLAR/SLEEVE                      |
| ⑬ | 110Ø INTUMESCENT FIRE COLLAR/SLEEVE                     |
| ⑭ | 40Ø UPVC TRAP CONNECTION TO DISHWASHER                  |
| ⑮ | 32Ø UPVC TRAP CONNECTION TO COFFEE MACHINE              |

**LEGEND:**

- PIPEWORK AT HIGH LEVEL
- PIPEWORK AT LOW LEVEL
- DRAINAGE PIPE
- CONDENSATE PIPE

- SVP - SOIL VENT PIPE
- WVP - WASTE WENT PIPE
- VP - VENT PIPE
- SP - SOIL PIPE
- S/S - STUB STACK
- WP - WASTE PIPE
- AAV - AIR ADMITTANCE VALVE
- FFL - FINISHED FLOOR LEVEL
- RE - RODDING EYE
- FA - FROM ABOVE
- FB - FROM BELOW
- TA - TO ABOVE
- TB - TO BELOW
- H/L - HIGH LEVEL
- L/L - LOW LEVEL



S4-P02	06/03/2024	DRAINAGE AND CONDENSATE AMENDED	AG	MT
S4-P01	26/01/2024	STAGE 3 CAT-B ISSUE	TE	AG
SUIT-REV	DATE	DESCRIPTION	DRN	CHK

**STATUS**

**STAGE 3**

THIS DRAWING IS COPYRIGHT. DO NOT SCALE FROM DRAWING. THE CONTRACTOR AND THEIR SUB-CONTRACTORS ARE TO VERIFY ALL DIMENSIONS ON SITE BEFORE MAKING SHOP DRAWINGS OR COMMENCING MANUFACTURE.

**KJ TAIT**  
ENGINEERS

1 Fitzroy Square  
London W1T 5HF  
T +44 (0) 207 388 0952  
E london@kjtait.com  
W www.kjtait.com

<b>PROJECT INFORMATION</b>			
CLIENT	OXFORD VICTORIA HOUSE DEVELOPMENT LTD LONDON, WC1B 4DA		
PROJECT	LONDON, WC1B 4DA		
<b>DRAWING INFORMATION</b>			
DRAWING TITLE	MECHANICAL SERVICES LOWER GROUND DRAINAGE LAYOUT		
DESIGNED BY	TE	DATE	JAN 2024
DRAWN BY	MZ	KJT JOB No.	L3221
SCALE	1 : 100 @ A1		L3221
JOB CODE	ORIGIN-VOL-LEVEL-TYPE-ROLE-CLASS NUMBER	SUIT-REV	
L3221	KJT-01-LG-DR-M-5210	S4 - P02	