

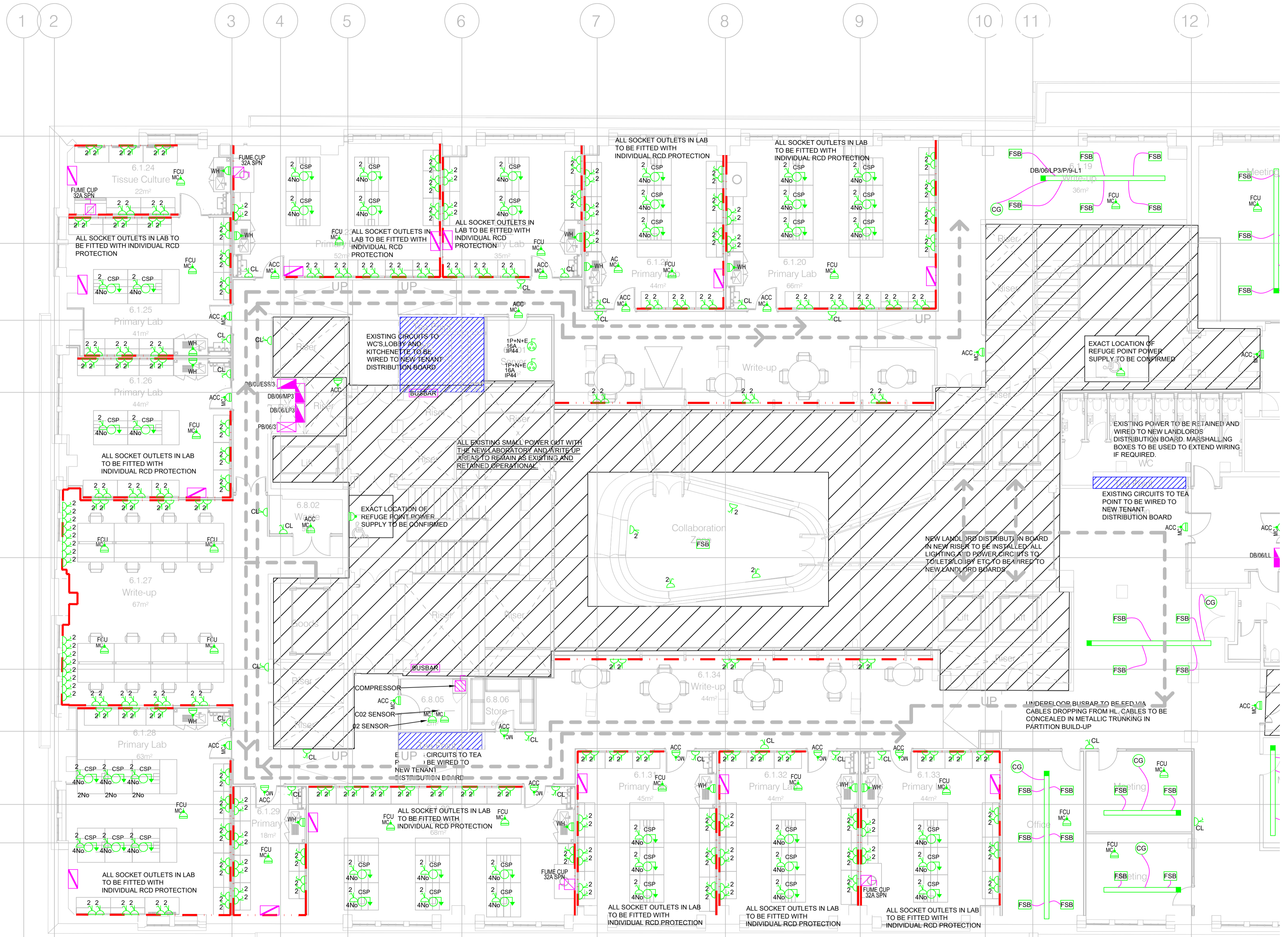
1 2 3 4 5 6 7 8 9 10 11 12

LEGEND:

- SWITCH FUSED CONNECTION UNIT WITH NEON
- 13A SINGLE UNSWITCHED SOCKET
- 13A SINGLE SWITCHED SOCKET OUTLET
- 13A TWIN SWITCHED SOCKET OUTLET
- 13A SWITCHED CLEANERS SOCKET OUTLET
- 13A TWIN SWITCHED SOCKET OUTLET WITH USB PORT
- CONNECTION OUTLET
- DOUBLE POLE ISOLATOR SWITCH WITH NEON
- WEATHERPROOF 13A TWIN SWITCHED SOCKET OUTLET WITH INTEGRAL RCD
- FAN ISOLATOR
- IEC SWITCHED SOCKET AS MK COMMANDO RATING 3P+N+E/2P+N+E/1P/44/7/5 AS PER DESCRIPTION
- 32A UNDERFLOOR BUSBAR SYSTEM COMPLETE WITH END FEED UNIT AND CAP. CLEAN EARTH SYSTEM TO BE USED
- FLOOR-TO-CEILING DOUBLE-SIDED WHITE ALUMINIUM & UPVC POWER POLE
- SINGLE PHASE & NEUTRAL ISOLATOR
- DOUBLE POLE & NEUTRAL ISOLATOR
- TRIPLE POLE & NEUTRAL ISOLATOR
- THREE PHASE & NEUTRAL FUSED SWITCH
- TP&N DISTRIBUTION BOARD
- SP&N DISTRIBUTION BOARD
- TP&N PANEL BOARD BOARD
- 3 COMPARTMENT CAT6 COMPLIANT DADO TRUNKING OR BENCH MOUNTED TRUNKING ON ISLANDS
- RISING BUSBAR SYSTEM REFER TO 61 SERIES DRAWINGS FOR DETAILS
- ACC DENOTES ACCESS CONTROL SYSTEM CONTROLLER
- ER DENOTES ELECTRIC RAD
- FCU DENOTES FAN COIL UNIT AT HIGH LEVEL
- HD DENOTES HAND DRIER
- ST DENOTES SENSOR TAP
- WH DENOTES POINT OF USE WATER HEATER

NOTES:

1. DO NOT SCALE FROM THIS DRAWING.
2. THIS DRAWING TO BE READ IN CONJUNCTION WITH KJ TAIT ELECTRICAL SPECIFICATION, MECHANICAL SERVICES DRAWINGS, ARCHITECTS AND STRUCTURAL ENGINEERS DRAWINGS.
3. ELECTRICAL INSTALLATION SHALL COMPLY FULLY WITH BS 7671: 2018 + AMENDMENTS AND KJ TAIT ENGINEERS' SPECIFICATION AND THE EMPLOYERS REQUIREMENTS
4. ALL ACCESSORY BACK BOXES TO BE STEEL FIXED TO DWANGS USING DOME HEADED SCREWS. BACK BOXES TO HAVE MINIMUM 40mm DEPTH FOR CAT6 DATA CABLING TERMINATIONS.
5. CLEANERS SOCKETS TO BE ENGRAVED AS SUCH.
6. ALL ACCESSORIES TO BE FLUSH IN ALL AREAS
7. ACCESSORIES SHALL BE AS FOLLOWS:
 - GENERALLY, THROUGHOUT - STANDARD WHITE PLASTIC AS MK LOGIC PLUS
 - PLANTROOMS AND VOIDS ETC. - MK METALCLAD RANGE
 - ALL ACCESSORIES TO BE FLUSH IN ALL AREAS WITH THE EXCEPTION OF PLANT AREAS, SWITCHROOMS AND CEILING VOIDS WHERE THEY WILL BE SURFACE FIXED.
8. ONLY HDG STEEL CONTAINMENT TO BE USED FOR MECHANICAL PROTECTION.
9. FINAL CONNECTIONS FROM ISOLATOR SWITCHES TO EQUIPMENT ETC TO BE BY ELECTRICAL CONTRACTOR. ALL ISOLATORS TO HAVE LABEL IDENTIFYING EQUIPMENT SERVED.
10. ALL RING CIRCUITS TO COMPLY WITH HIGH INTEGRITY EARTHING REQUIREMENTS OF PART 54 OF BS7671: 18TH EDITION WIRING REGULATIONS. ALL SOCKET OUTLETS TO HAVE DUAL EARTH TERMINALS AND ICT CIRCUIT RINGS CPC TO BE INDIVIDUALLY TERMINATED AT SOCKET AND DISTRIBUTION BOARD IN DIFFERENT TERMINALS.
11. ALL SOCKET OUTLETS, SFUCS AND ISOLATOR SWITCHES ETC TO BE PROVIDED WITH LABELS INDICATING DISTRIBUTION BOARD CIRCUIT REFERENCE. ISOLATORS TO ALSO HAVE LABEL IDENTIFYING EQUIPMENT SERVED.
12. SOCKET CIRCUITS SHALL GENERALLY BE PROVIDED WITH RCD PROTECTION AT DISTRIBUTION BOARD OR INTEGRAL TO SOCKETS.
13. THE UNDERFLOOR BUSBAR SYSTEM SHALL BE FIXED DIRECTLY TO THE FLOOR AND BE COMPLETE WITH ALL TAP-OFF UNITS, FIXING BRACKETS, LIVE ENDS, FLEXIBLE CORNERS etc. CONNECTIONS FOR TAP-OFFS SHALL BE EVERY 300mm.
14. SUPPLIES TO UNDERFLOOR BUSBAR TO BE WIRED IN 3-CORE XLPE/SW/LSOH WITH 3rd CORE USED AS CPC. CPC CORE TO HAVE HEAT SHRINK GREEN/YELLOW OVER SHEATH CORE INDICATOR AT BOTH ENDS OF CABLE.
15. ALL XLPE/SW/LSOH CABLING SUPPLYING BUSBAR SYSTEM SHALL BE FIXED DIRECTLY TO THE FLOOR SLAB AT 300mm INTERVALS BY MEANS OF BLACK ALL ROUND BAND AND BLACK DOME HEAD SCREWS.
16. UNDERFLOOR BUSBAR SYSTEM SHALL BE RATED AT 32A SP&N COMPLETE WITH FULL SIZED NEUTRAL AND EARTH BAR PLUS THE FACILITY FOR CASEMENT EARTH AT EACH TAP-OFF. TAP-OFF POINTS SHALL BE AT 300mm INTERVALS ALONG ITS LENGTH.
17. FLEXIBLE CONNECTIONS FROM THE BUS-BAR TO THE SLAB/FLOOR BOX SHALL BE PROVIDED IN METALIC KOPEX FLEXIBLE CONDUIT 3000/5000mm LENGTHS FROM UNFUSED TAP-OFF UNIT
18. FLEXIBLE CONNECTIONS FROM DESKS TO MAIN SC5 CABLE ROUTES SHALL BE BY 25mmØ LSF SHEATHED KOPEX FLEXIBLE CONDUIT WITH FIXING AT MATTING USING A PROPRIETARY FLEXIBLE CONDUIT 'TAKE OFF' PLATE.
19. FLOOR SERVICE BOXES, FLOOR GROMMETS AND CLEANERS SERVICE BOXES BE CUT INTO CORNER OF FLOOR TILE TO ALLOW TILE TO BE ROTATED AND PROVIDE 4No. POSSIBLE FLOOR BOX POSITIONS.
20. FINAL LOCATION OF ALL UNDERFLOOR BUS-BARS AND THEIR BOXES TO SUIT EXISTING FLOOR TILE LAYOUT AND EXISTING SERVICES WITHIN FLOOR VOID.
21. ELECTRICAL CONTRACTOR TO SUPPLY AND INSTALL BACK BOXES AND CONTAINMENT FOR ALL DATA, AV AND TV OUTLETS. REFER TO KJT 6401 SERIES DRAWINGS FOR LOCATIONS AND QUANTITIES.
22. ALL CONTAINMENT & CABLING TO BE APPROPRIATELY FIRE STOPPED WHERE PASSING THROUGH FLOORS, FIRE RATED PARTITIONS AND CAVITY BARRIERS. REFER TO KJ TAIT SPECIFICATION/DETAIL DRAWINGS FOR DETAILS AND TO ARCHITECTS DRAWINGS FOR LOCATIONS.
23. ALL WALL RECESSED OUTLETS WITHIN PARTITIONS TO BE PROVIDED WITH ACOUSTIC PUTTY PADS TO MAINTAIN ROOM SOUND RATING. ALL CABLE/CONTAINMENT PASSING THROUGH ACOUSTIC PARTITIONS TO BE APPROPRIATELY SEALED TO MAINTAIN ROOM INTEGRITY.
24. FINAL DETAILS OF SUPPLIES TO MECHANICAL PLANT TO BE CONFIRMED WITH MECHANICAL CONTRACTOR AND DESIGNED BY ELECTRICAL CONTRACTOR TO SUIT. THE SUPPLIES SHOWN ARE INDICATIVE.
25. GENERALLY THE INSTALLATION SHALL UTILISE LSOH TWIN & EARTH CABLING RUN CONCEALED WITHIN PARTITIONS. HDG STEEL CONTAINMENT TO BE USED FOR MECHANICAL PROTECTION WHERE REQUIRED FOR COMPLIANCE.
26. POWER SUPPLIES TO HAND DRYERS SHALL COMPRISE FLUSH FUSED CONNECTION UNIT AT HIGH LEVEL. CONCEALED 25mmØ CONDUIT DROP IN WALL TO 1200mm AFFL. FLUSH OUTLET BOX AFFL. MK LOGIC PLUS BLANKING PLATE. OUTLET BOX IN DISABLED TOILETS TO BE AT 900mm AFFL.



S4 - P01	26/01/24	STAGE 3 CAT-B ISSUE	SH	MT
SUIT-REV	DATE	DESCRIPTION	DRN	CHK

STAGE 3

THIS DRAWING IS COPYRIGHT. DO NOT SCALE FROM DRAWING. THE CONTRACTOR AND THEIR SUB-CONTRACTORS ARE TO VERIFY ALL DIMENSIONS ON SITE BEFORE MAKING SHOP DRAWINGS OR COMMENCING MANUFACTURE.

KJ TAIT ENGINEERS
 1 Fitzroy Square
 London W1T 5HF
 T +44 (0) 207 388 0952
 E london@kjtaic.com
 W www.kjtaic.com

PROJECT INFORMATION			
CLIENT	OXFORD VICTORIA HOUSE		
PROJECT	DEVELOPMENT LTD		
	LONDON, WC1B 4DA		
DRAWING INFORMATION			
DRAWING TITLE: ELECTRICAL SERVICES			
DRAWING NUMBER: 6TH FLOOR SMALL POWER LAYOUT			
SHEET 1 of 2			
DESIGNED BY	SH	DATE	Dec 2023
DRAWN BY	MZ	KJT JOB No.	L3221
SCALE	1:100 @ A1		
JOB CODE	L3221	ORIGIN-VOL-LEVEL-TYPE-ROLE-CLASS NUMBER	SUIT-REV
	KJT-01-06-DR-E-6210		S4-P01