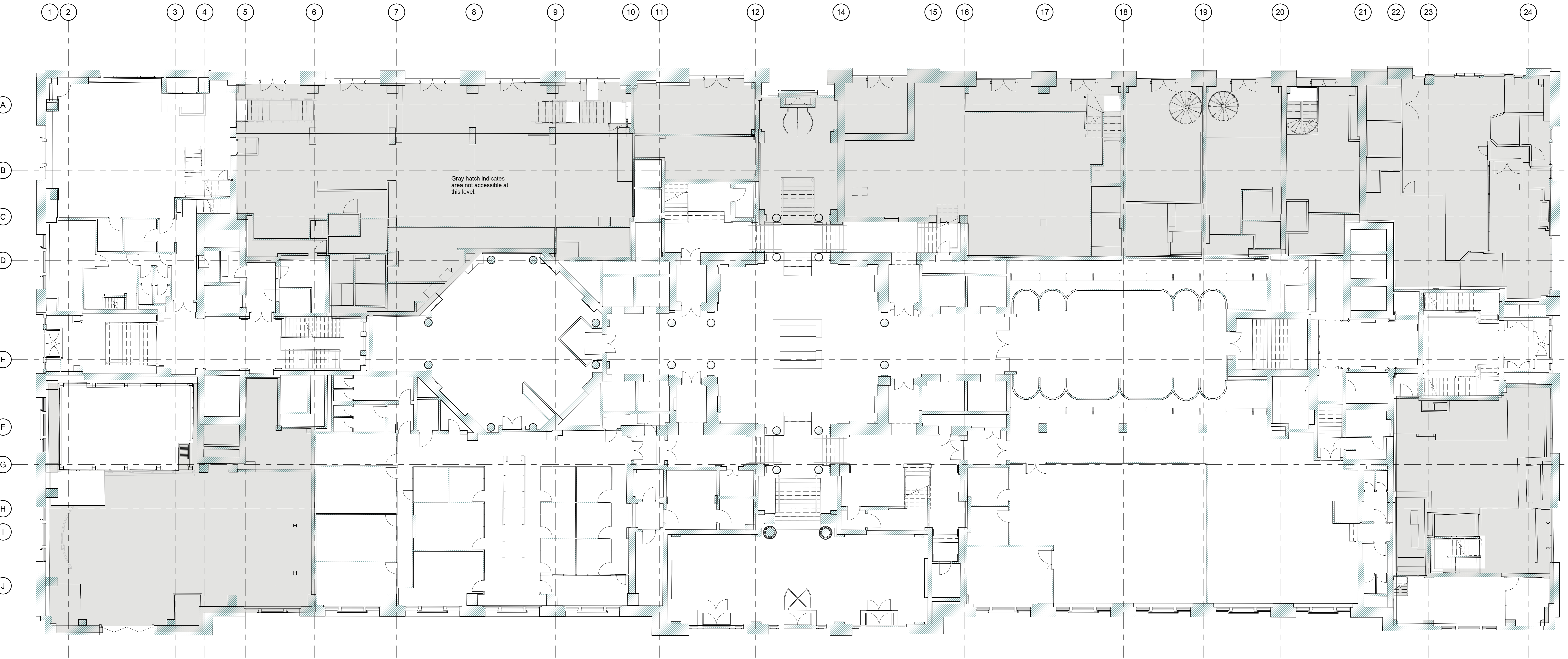


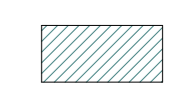
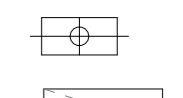


**EXISTING NOTES**

1. ALL SERVICES SHOWN ON THIS DRAWING ARE INCLUDED FOR SCALE, SPATIAL CONTEXT & COORDINATION ONLY. PLEASE REFER TO INDIVIDUAL CONSULTANTS INFORMATION FOR DETAILS.
2. THE PURPOSE OF THIS DRAWING AND ITS RELEVANT PACKAGE IS FOR STAGE 4 INFORMATION ONLY.
3. DO NOT SCALE DRAWING, USE FIGURED DIMENSIONS ONLY.
4. ALL DIMENSIONS ARE IN MILLIMETERS.
5. EXISTING DRAWINGS ARE BASED ON A DIGITAL SURVEY, ANY DISCREPANCIES IDENTIFIED ON SITE TO BE REPORTED TO THE ARCHITECT.

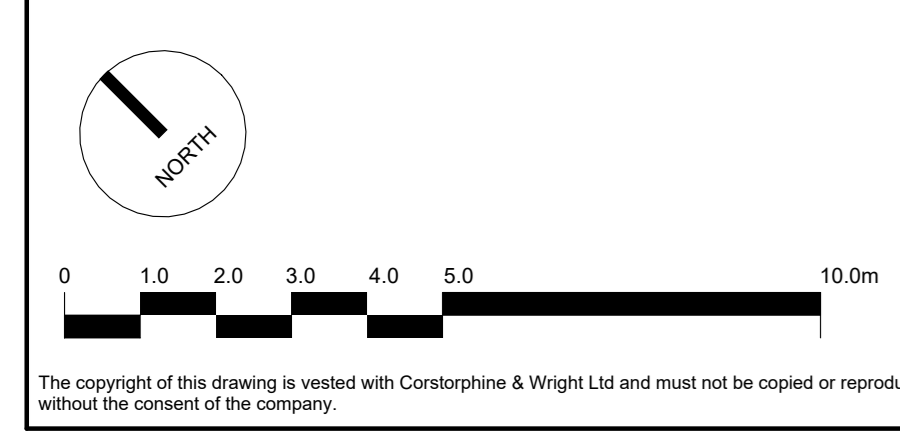


1 Existing Plan - Upper Ground Floor  
1:100

**SYMBOLS & HATCHES LEGEND**

-  Existing Building
-  Drainage Positions
-  Ramps
-  New disabled refuse wireless call points

**NOTE:**  
Please refer to Proposed Soft Strip drawings. 21593-1001 to 1009 for levels Basement B2 to Level 3 and level 5 for all items to be removed under a separate soft strip contract by others. Which do not form part of this contract unless otherwise instructed.



Rev.	Description	Date	Drawn	Checked
T-02	Stage 4a Information Issue	16.08.2023	DL	ML
T-01	UPDATE SCALEBAR	21.12.2022	DL	ML
T-00	TENDER ISSUE	21.10.2022	EM	RW

**DRAWING PACKAGE REFERENCES**

- 0200 Series - Existing Plans, Sections & Elevations
- 1100 Series - Demolition
- 2000 Series - Proposed Plans, Sections & Elevations
- 2200 Series - Fire Strategy
- 2400 Series - Wall Types
- 2500 Series - Floor Finishes
- 2600 Series - Ceiling Finishes
- 2700 Series - Setting Out
- 3000 Series - External Details
- 4000 Series - Internal Details
- 5000 Series - Schedules

Client: Oxford Victoria House Ltd.

Project: 21593 - Victoria House

Drawing Title: Plan - GA Existing - Upper Ground Floor

Drawing Status: INFORMATION

**Corstorphine & Wright**

London Studio  
21-27 Lark's Court Street, Holborn, London, WC1N 3JL  
020 7463 0520  
corstorphinewright.com

Drawing No: 21593-CWA-VH-UG-DR-A-0225

Revision: T-02

Drawn: DL, ML, A0, As indicated. Date: 21/12/2022