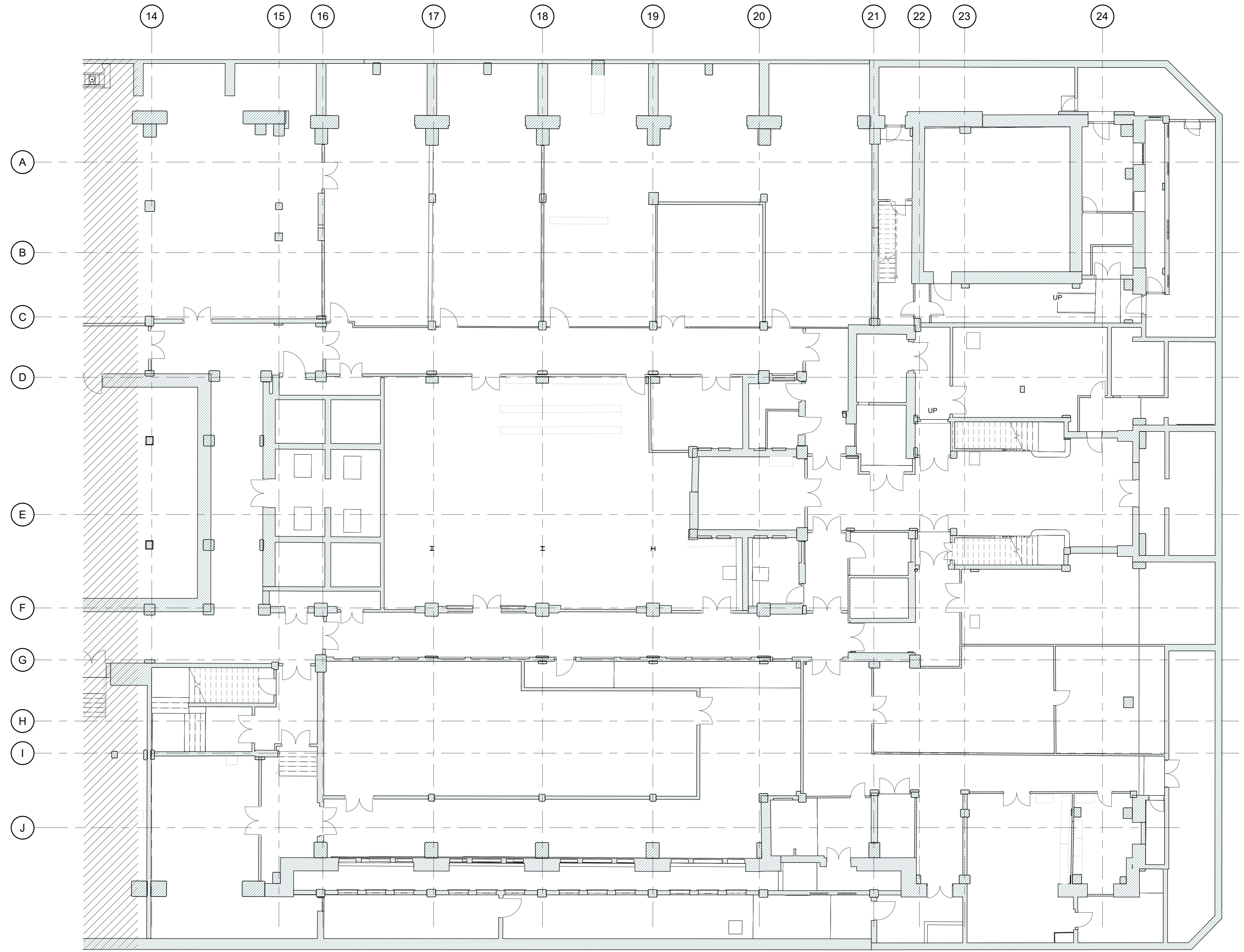


**EXISTING NOTES**

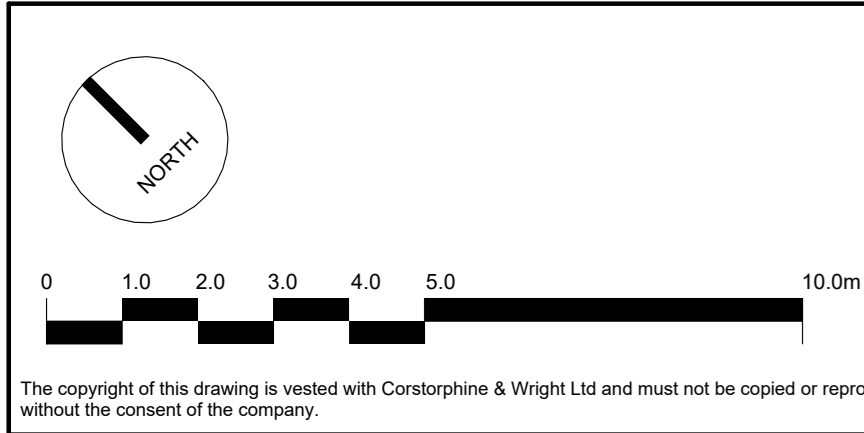
1. ALL SERVICES SHOWN ON THIS DRAWING ARE INCLUDED FOR SCALE, SPATIAL CONTEXT & COORDINATION ONLY. PLEASE REFER TO INDIVIDUAL CONSULTANTS INFORMATION FOR DETAILS.
2. THE PURPOSE OF THIS DRAWING AND ITS RELEVANT PACKAGE IS FOR STAGE 4 INFORMATION ONLY.
3. DO NOT SCALE DRAWING, USE FIGURED DIMENSIONS ONLY.
4. ALL DIMENSIONS ARE IN MILLIMETERS.
5. EXISTING DRAWINGS ARE BASED ON A DIGITAL SURVEY, ANY DISCREPANCIES IDENTIFIED ON SITE TO BE REPORTED TO THE ARCHITECT.



1 Existing Plan - Basement Level B2 (South)  
1:100

**SYMBOLS & HATCHES LEGEND**

- Existing Building
- Drainage Positions
- Ramps
- New disabled refuge with wireless call points



T-02	STAGE 4A INFORMATION ISSUE	16.08.2023	DL	ML
T-01	UPDATE SCALE BAR	21.12.2022	DL	ML
T-00	TENDER ISSUE	21.10.2022	EM	RW
	Rev. Description	Date	Drawn	Checked

**DRAWING PACKAGE REFERENCES**

- 0200 Series - Existing Plans, Sections & Elevations
- 1100 Series - Demolition
- 2000 Series - Proposed Plans, Sections & Elevations
- 2200 Series - Fire Strategy
- 2400 Series - Wall Types
- 2500 Series - Floor Finishes
- 2600 Series - Ceiling Finishes
- 2700 Series - Setting Out
- 3000 Series - External Details
- 4000 Series - Internal Details
- 5000 Series - Schedules

Client:  
Oxford Victoria House Ltd.

Project:  
21593 - Victoria House

Drawing Title:  
Plan - GA Existing - Basement Level B2 (South)

Drawing No:  
21593-CWA-VH-B2-DR-A-0221

Drawing Status:  
INFORMATION

**Corstorphine & Wright**

London Studio  
21-27 Lark's Court Street, Holborn, London, WC1N 3NL  
020 7463 0000

corstorphinewright.com

Revision

Drawn: DL, Checked: ML, Paper Size: A0, Scale: As indicated, Date: 21/12/2022

Revision: T-02