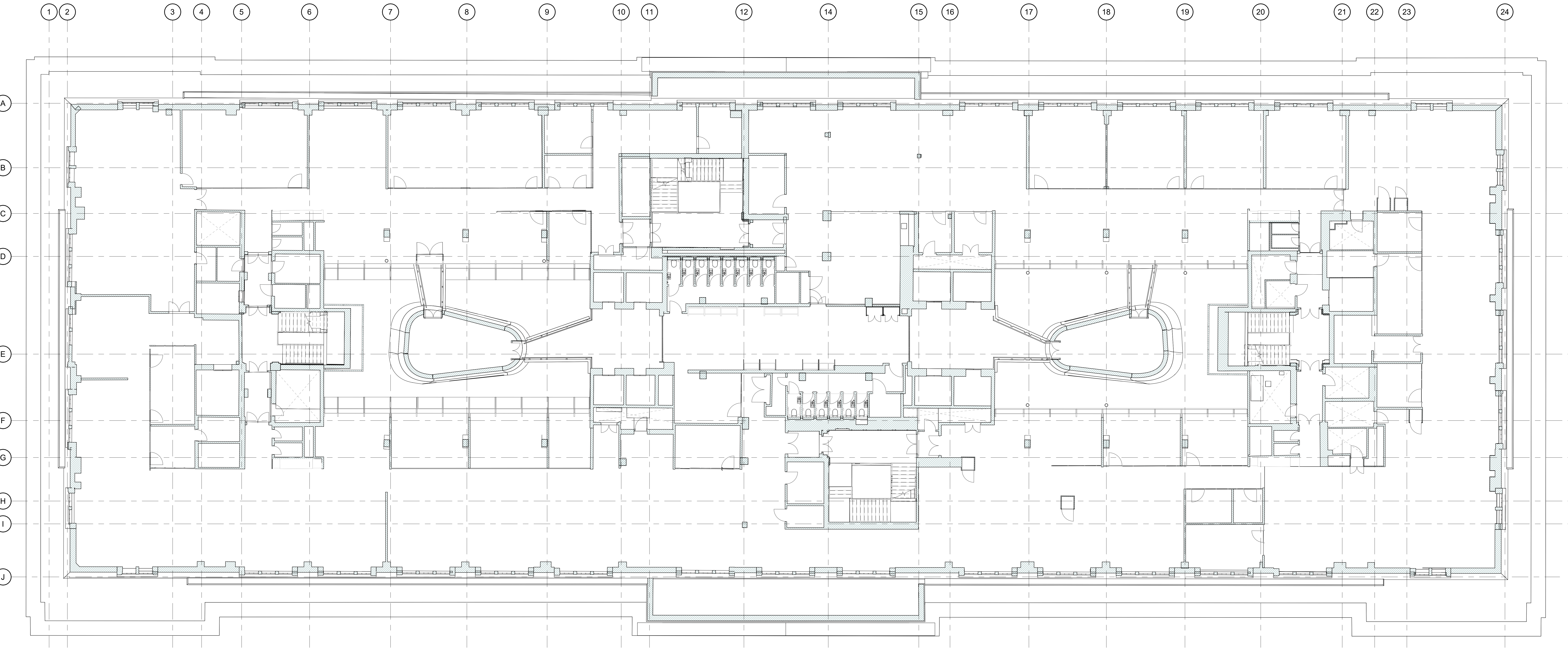


EXISTING NOTES

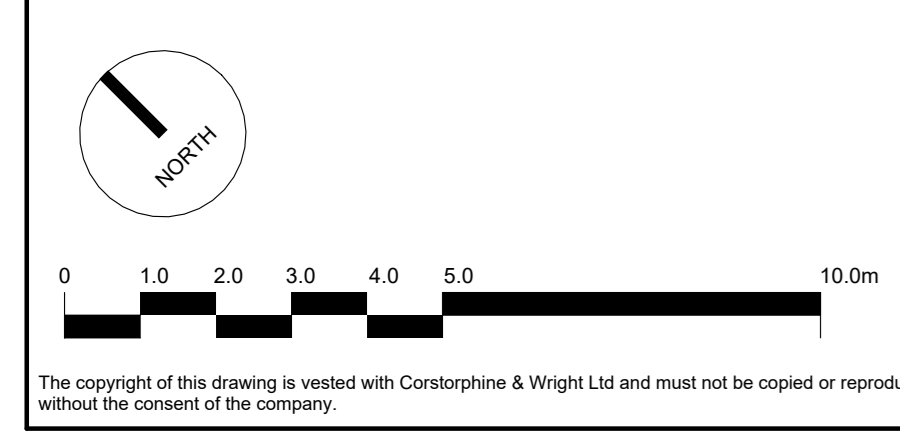
- ALL SERVICES SHOWN ON THIS DRAWING ARE INCLUDED FOR SCALE, SPATIAL CONTEXT & COORDINATION ONLY. PLEASE REFER TO INDIVIDUAL CONSULTANTS INFORMATION FOR DETAILS.
- THE PURPOSE OF THIS DRAWING AND ITS RELEVANT PACKAGE IS FOR STAGE 4 INFORMATION ONLY.
- DO NOT SCALE DRAWING, USE FIGURED DIMENSIONS ONLY.
- ALL DIMENSIONS ARE IN MILLIMETERS.
- EXISTING DRAWINGS ARE BASED ON A DIGITAL SURVEY, ANY DISCREPANCIES IDENTIFIED ON SITE TO BE REPORTED TO THE ARCHITECT.



1 Existing Plan - Sixth Floor
1:100

SYMBOLS & HATCHES LEGEND

- Existing Building
- Drainage Positions
- Ramps
- New disabled refuge with wireless call points



Rev	Description	Date	Drawn	Checked
T-02	STAGE 4A INFORMATION ISSUE	16.08.2023	DL	ML
T-01	UPDATE SCALE BAR	21.12.2022	DL	ML
T-00	TENDER ISSUE	21.10.2022	EM	RW

- DRAWING PACKAGE REFERENCES**
- 0200 Series - Existing Plans, Sections & Elevations
 - 1100 Series - Demolition
 - 2000 Series - Proposed Plans, Sections & Elevations
 - 2200 Series - Fire Strategy
 - 2400 Series - Wall Types
 - 2500 Series - Floor Finishes
 - 2600 Series - Ceiling Finishes
 - 2700 Series - Setting Out
 - 3000 Series - External Details
 - 4000 Series - Internal Details
 - 5000 Series - Schedules

Client: Oxford Victoria House Ltd.

Project: 21593 - Victoria House

London Studio
21-27 Lark's Conduit Street, Holborn, London, WC1N 3NL
020 7463 0020

Corstorphine & Wright
corstorphinewright.com

Drawing No:	21593-CWA-VH-06-DR-A-0232	Revision	T-02
Drawn:	DL	Checked:	ML
Paper Size:	A0	Scale:	As indicated
Date:	21/12/2022		

Drawing Status: INFORMATION