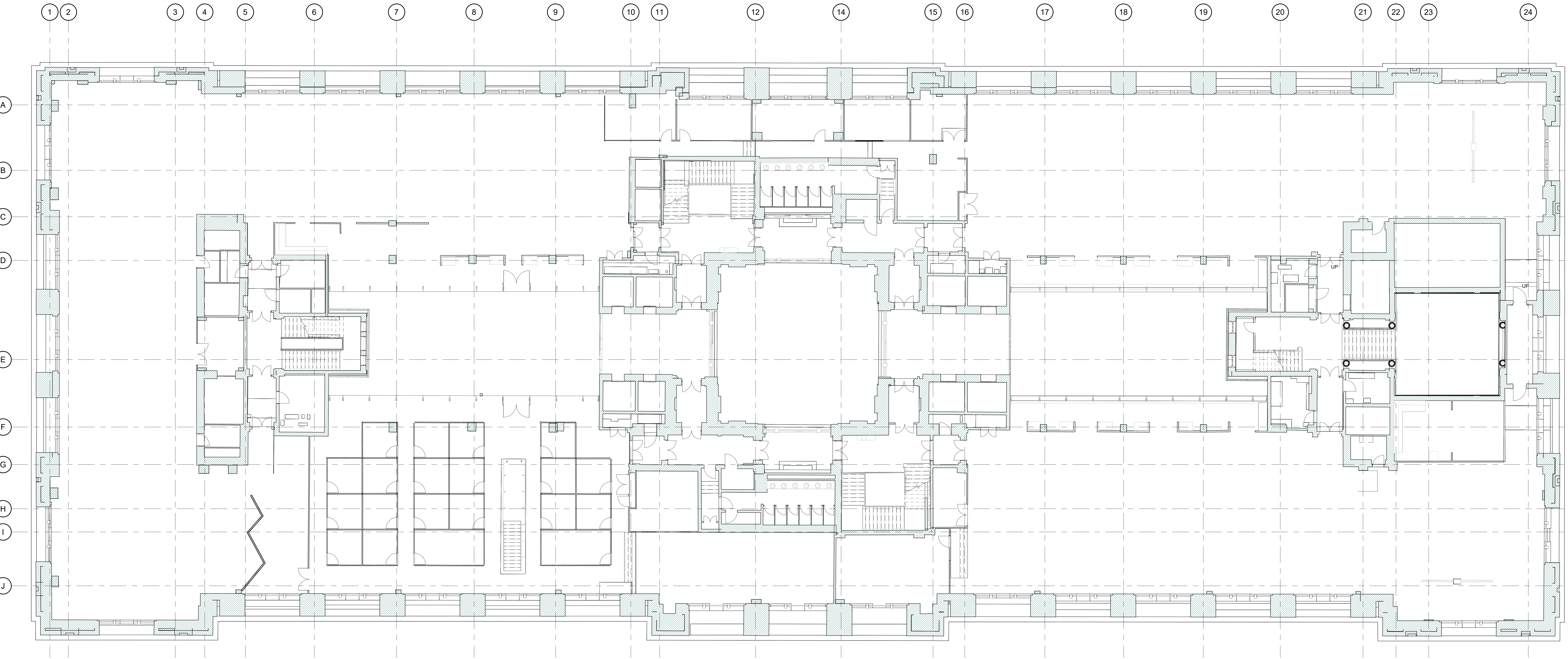


EXISTING NOTES

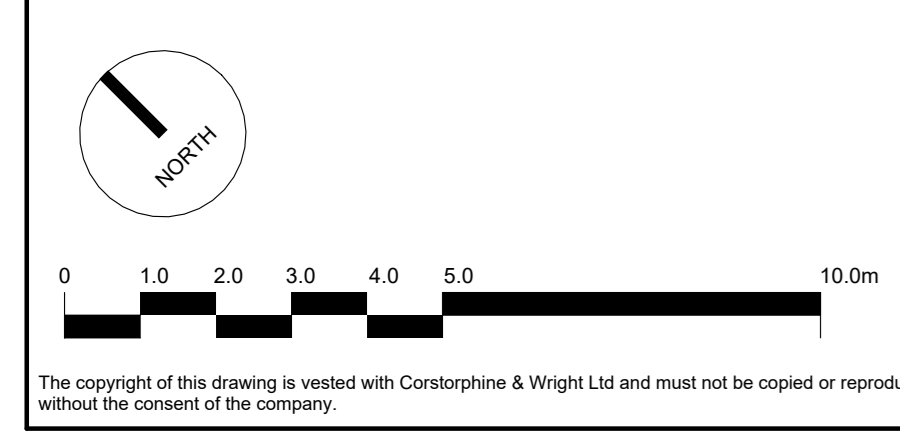
1. ALL SERVICES SHOWN ON THIS DRAWING ARE INCLUDED FOR SCALE, SPATIAL CONTEXT & COORDINATION ONLY. PLEASE REFER TO INDIVIDUAL CONSULTANTS INFORMATION FOR DETAILS.
2. THE PURPOSE OF THIS DRAWING AND ITS RELEVANT PACKAGE IS FOR STAGE 4 INFORMATION ONLY.
3. DO NOT SCALE DRAWING, USE FIGURED DIMENSIONS ONLY.
4. ALL DIMENSIONS ARE IN MILLIMETERS.
5. EXISTING DRAWINGS ARE BASED ON A DIGITAL SURVEY, ANY DISCREPANCIES IDENTIFIED ON SITE TO BE REPORTED TO THE ARCHITECT.



1 0227 - Existing Plan - First Floor
1:100

SYMBOLS & HATCHES LEGEND

	Existing Building
	Drainage Positions
	Ramps
	New disabled refuge with wireless call points



T-02	STAGE 4A INFORMATION ISSUE	16.08.2023	DL	ML
T-01	UPDATE SCALEBAR	21.12.2022	DL	ML
T-00	TENDER ISSUE	21.10.2022	EM	RW
	Rev. Description	Date	Drawn	Checked

DRAWING PACKAGE REFERENCES

0200 Series - Existing Plans, Sections & Elevations	2600 Series - Ceiling Finishes
1100 Series - Demolition	2700 Series - Setting Out
2000 Series - Proposed Plans, Sections & Elevations	3000 Series - External Details
2200 Series - Fire Strategy	4000 Series - Internal Details
2400 Series - Wall Types	5000 Series - Schedules
2500 Series - Floor Finishes	

Client: Oxford Victoria House Ltd.		Corstorphine & Wright	
Project: 21593 - Victoria House		London Studio 21-27 Lark's Conduit Street, Holborn, London, WC1N 3NL 020 7443 0520 corstorphine-wright.com	
Drawing Title: Plan - GA Existing - First Floor	Drawing No: 21593-CWA-VH-01-DR-A-0227	Revision: T-02	
Drawing Status: INFORMATION	Drawn: DL	Checked: ML	Paper Size: A0
	Scale: As indicated	Date: 21/12/2022	