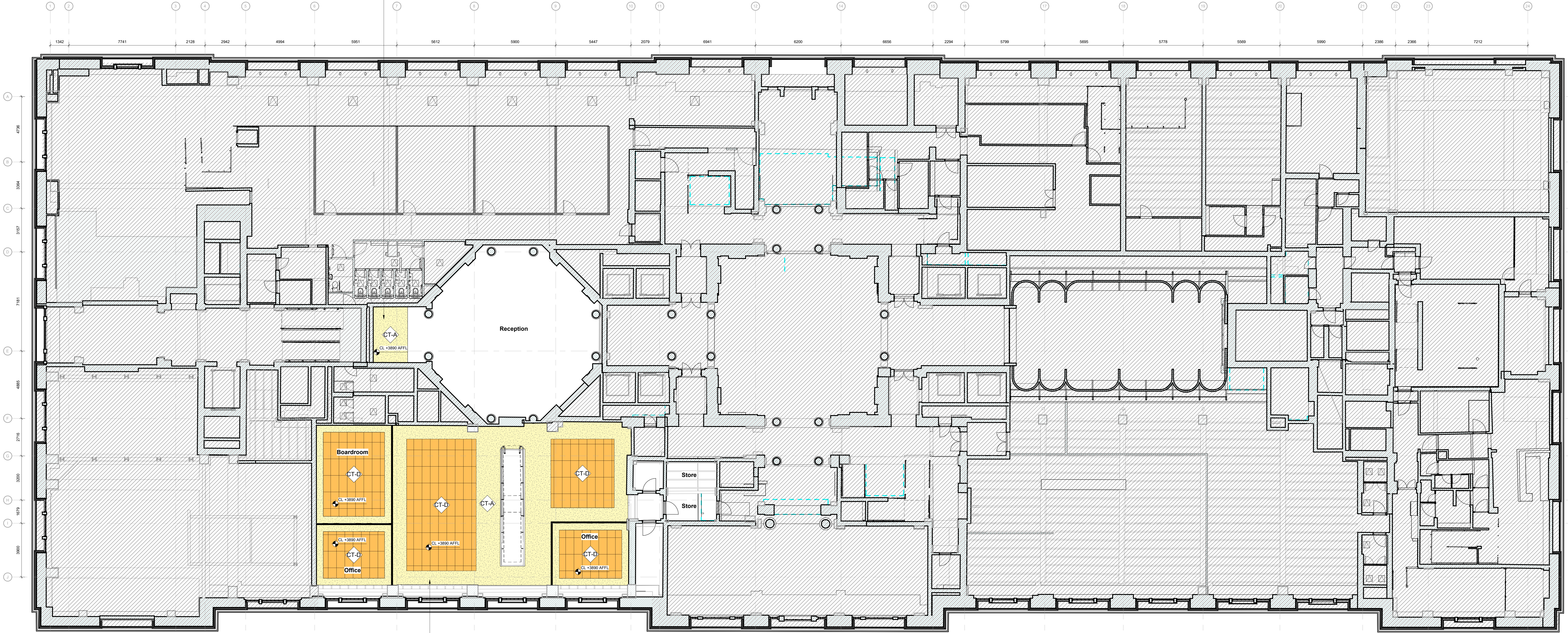


- GENERAL NOTES**
1. ALL SERVICES SHOWN ON THIS DRAWING ARE INCLUDED FOR SCALE. SPATIAL CONTENT & COORDINATION ONLY. PLEASE REFER TO INDIVIDUAL CONSULTANTS INFORMATION FOR DETAILS.
 2. DO NOT SCALE DRAWING. USE FIGURED DIMENSIONS ONLY.
 3. ALL DIMENSIONS ARE IN MILLIMETERS.
 4. ANY DISCREPANCIES FOUND BETWEEN ARCHITECTURAL DRAWINGS & SPECIFICATION AND/OR ANY OTHER CONSULTANTS DRAWINGS & SPECIFICATIONS ARE TO BE REPORTED TO THE ARCHITECT AND RELEVANT CONSULTANT FOR CLARIFICATION AND APPROVAL.

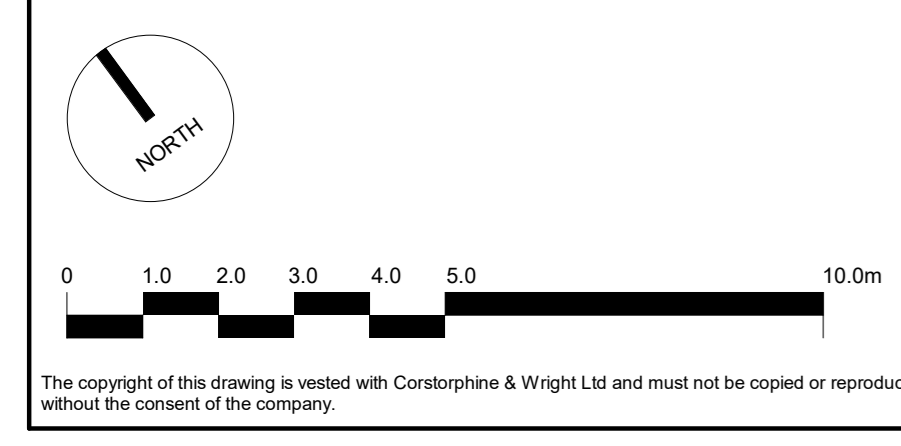
- CEILING FINISHES NOTES**
1. DRAWING TO BE READ IN CONJUNCTION WITH PREVIOUS PACKAGE OF WORKS. 200 SERIES CEILING FINISHES & SPECIFICATIONS.
 2. ANY DISCREPANCIES OR ISSUES TO BE REPORTED TO THE ARCHITECT PRIOR TO THE APPLICATION OF PROPOSED FINISHES.
 3. AREAS WITHOUT HATCH OR COLOUR ARE EXPOSED TO UNDERSIDE OF SOFFIT. PAINT FINISH HAS BEEN INCORPORATED INTO PREVIOUS PHASE OF WORKS.
 4. CEILINGS ALONG EXTERNAL PERIMETER WALL REQUIRE A BULKHEAD TO AVOID CLASH WITH EXISTING WINDOWS AND CEILINGS. REFER TO HATCH LEGEND TO SYMBOL & COLOUR ASSOCIATED TO BULKHEAD.
 5. ALL CEILINGS ARE TO BE +2700mm FROM LABORATORY FINISHED FLOOR LEVEL.

CEILING IN THIS AREA IS NOT FULLY ENCLOSED. INSPECTION ON SITE IS REQUIRED TO DETERMINE FULL EXTENT OF CEILING REQUIRED TO MAKE GOOD.



- HATCH LEGEND**
- OUT OF SCOPE
 - PROPOSED SLOPES / RAMPS
 - EXISTING SLOPES / RAMPS
 - SIGNAGE
 - CT-A
 - CT-D
 - CT-F
 - BULKHEAD

- CEILING FINISHES**
- CT-A SUSPENDED CEILING SYSTEM TO CEILING, BULKHEADS AND MARGINS. PLASTERBOARD IN FULLY SEALED AND DECORATED WITH ONE MIST COAT AND TWO FULL COATS EMULSION PAINT FINISH. COLOUR WHITE, RAL 9010
 - CT-D SUSPENDED CEILING SYSTEM WITH PERFORATED METAL TILE. SAS 120 SYSTEM WITH 600 X 1200MM GRID. SAS SPRING TIE SUSPENSION. POLYESTER POWDER-COATING ANTI-BACTERIAL FINISH. COLOUR WHITE, RAL 9010. PERFORATIONS: S2516, SQUARE PATTERN - 2.5MM DIAMETER, 16% OPEN AREA.
 - CT-F SUSPENDED CEILING SYSTEM WITH PERFORATED METAL TILE. SAS 150 SYSTEM WITH 600 X 600MM ALIGNED-P CLEANSEAL GRID. SAS SPRING TIE SUSPENSION. POLYESTER POWDER-COATING ANTI-BACTERIAL FINISH. COLOUR WHITE, RAL 9010. PERFORATIONS: S2516, SQUARE PATTERN - 2.5MM DIAMETER, 16% OPEN AREA.



101 Stage 3 Tender Issue
 22/01/2024 DL ML
 Date Drawn/Checked

Client: Oxford Victoria House Ltd.
 Project: Victoria House - Phase 4
 Drawing Title: Layout - Ceiling Finishes - Upper Ground Floor
 Drawing No: 21593-CWA-P4-UG-DR-A-2603
 State: S2
 Revision: T01
 Date: 29/11/2023
 Scale: 1:100
 Drawn: DL, Checked: ML, Paper Size: A0

Corstorphine & Wright
 London Studio
 21/21 Lamb's Conduit Street, Holborn, London, WC1N 3NL
 020 744 0020
 corstorphine-wright.com