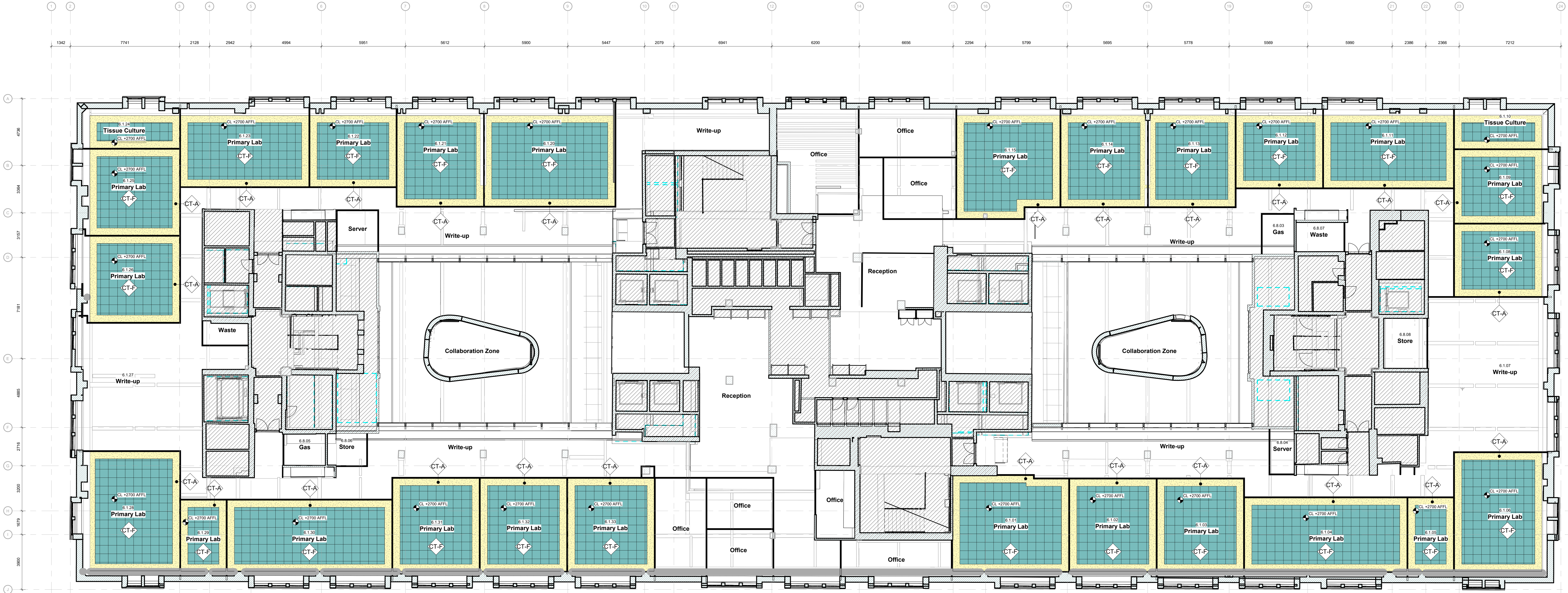


GENERAL NOTES

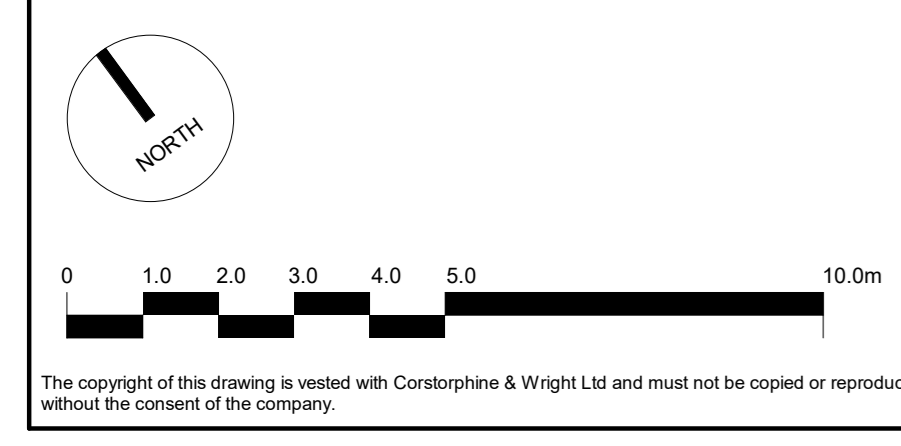
1. ALL SERVICES SHOWN ON THIS DRAWING ARE INCLUDED FOR SCALE. SPATIAL CONTEXT & COORDINATION ONLY. PLEASE REFER TO INDIVIDUAL CONSULTANTS INFORMATION FOR DETAILS.
2. DO NOT SCALE DRAWING. USE FIGURED DIMENSIONS ONLY.
3. ALL DIMENSIONS ARE IN MILLIMETERS.
4. ANY DISCREPANCIES FOUND BETWEEN ARCHITECTURAL DRAWINGS & SPECIFICATION AND/OR ANY OTHER CONSULTANTS DRAWINGS & SPECIFICATIONS ARE TO BE REPORTED TO THE ARCHITECT AND RELEVANT CONSULTANT FOR CLARIFICATION AND APPROVAL.

CEILING FINISHES NOTES

1. DRAWING TO BE READ IN CONJUNCTION WITH PREVIOUS PACKAGE OF WORKS. 200 SERIES CEILING FINISHES & SPECIFICATIONS.
2. ANY DISCREPANCIES OR ISSUES TO BE REPORTED TO THE ARCHITECT PRIOR TO THE APPLICATION OF PROPOSED FINISHES.
3. AREAS WITHOUT HATCH OR COLOUR ARE EXPOSED TO UNDERSIDE OF SOFFIT. PAINT FINISH HAS BEEN INCORPORATED INTO PREVIOUS PHASE OF WORKS.
4. CEILINGS ALONG EXTERNAL PERIMETER WALL REQUIRE A BULKHEAD TO AVOID CLASH WITH EXISTING WINDOWS AND CEILING. REFER TO HATCH LEGEND TO SYMBOL & COLOUR ASSOCIATED TO BULKHEAD.
5. ALL CEILINGS ARE TO BE +2700mm FROM LABORATORY FINISHED FLOOR LEVEL.



	OUT OF SCOPE		CT-A		BULKHEAD	CT-A	SUSPENDED CEILING SYSTEM TO CEILING, BULKHEADS AND MARGINS. PLASTERBOARD IN FULLY SEALED AND DECORATED WITH ONE MIST COAT AND TWO FULL COATS EMULSION PAINT FINISH. COLOUR WHITE, RAL 9010
	PROPOSED SLOPES / RAMPS		CT-D			CT-D	SUSPENDED CEILING SYSTEM WITH PERFORATED METAL TILE. SAS 120 SYSTEM WITH 600 X 1200MM GRID. SAS SPRING TIE SUSPENSION. POLYESTER POWDER-COATING ANTI-BACTERIAL FINISH. COLOUR WHITE, RAL 9010. PERFORATIONS: S2516, SQUARE PATTERN - 2.5MM DIAMETER, 16% OPEN AREA
	EXISTING SLOPES / RAMPS		CT-F			CT-F	SUSPENDED CEILING SYSTEM WITH PERFORATED METAL TILE. SAS 150 SYSTEM WITH 600 X 600MM ALLIGRD-P CLEANSEAL GRID. SAS SPRING TIE SUSPENSION. POLYESTER POWDER-COATING ANTI-BACTERIAL FINISH. COLOUR WHITE, RAL 9010. PERFORATIONS: S2516, SQUARE PATTERN - 2.5MM DIAMETER, 16% OPEN AREA
	SIGNAGE						



T01	Stage 3 Tender Issue	22/01/2024	DL	ML
Rev.	Description	Date	Dwg.	CHK.

Client: Oxford Victoria House Ltd.

Project: Victoria House - Phase 4

Drawing Title: Layout - Ceiling Finishes - Sixth Floor

Submittal: TENDER

London Studio
21-27 Lamb's Conduit Street, Holborn, London, WC1N 3SE
020 7446 0020
corstorphine-wright.com

Drawing No.	21593-CWA-P4-06-DR-A-2610	Status	S2	Revision	T01
Drawn	DL	Checked	ML	Paper Size	A0
Scale	1:100	Date	29/11/2023		