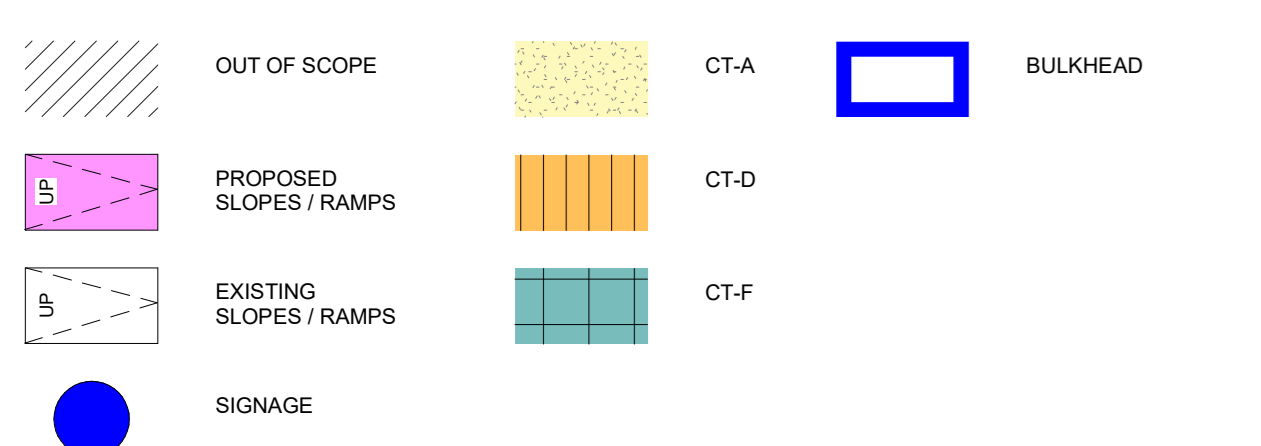
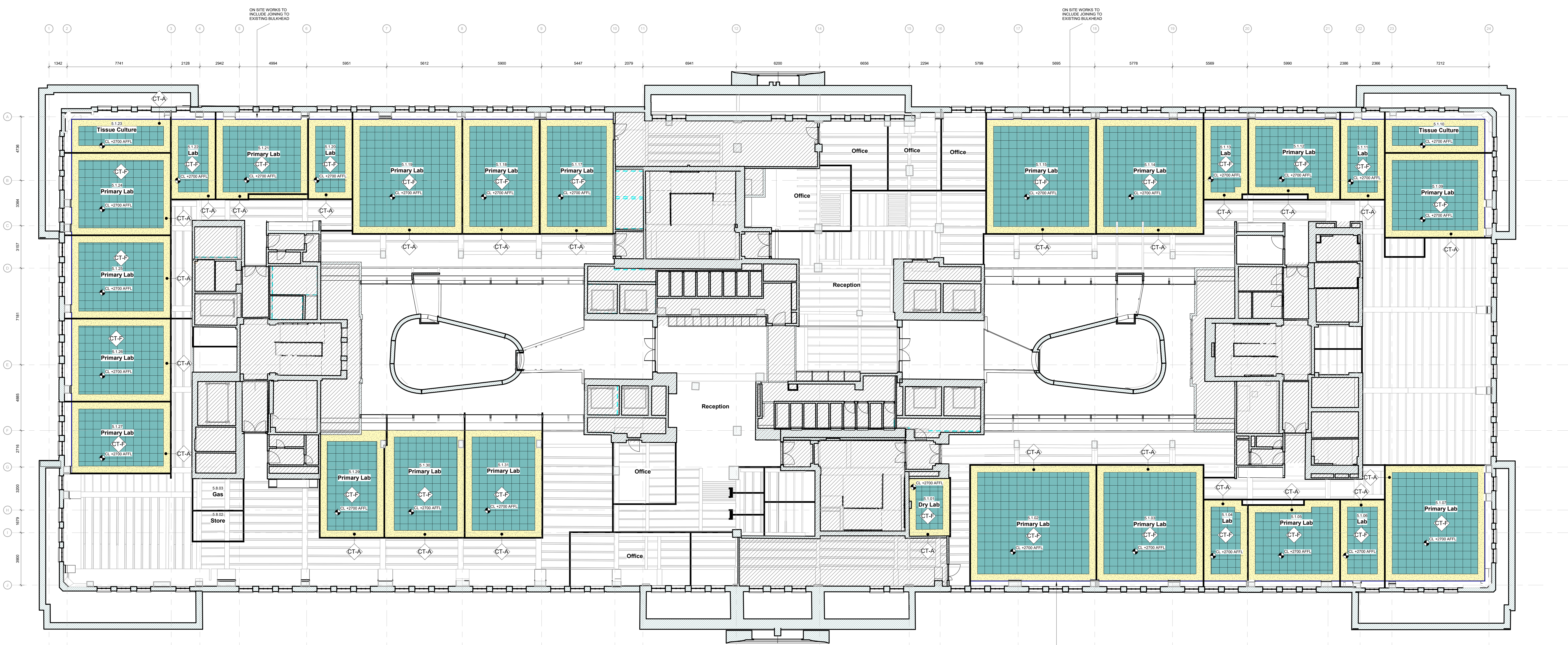
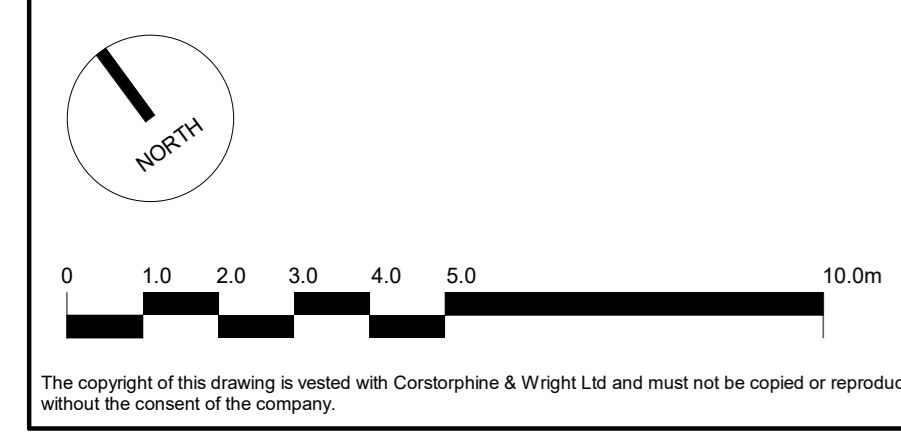


- GENERAL NOTES**
1. ALL SERVICES SHOWN ON THIS DRAWING ARE INCLUDED FOR SCALE. SPATIAL CONTEXT & COORDINATION ONLY. PLEASE REFER TO INDIVIDUAL CONSULTANTS INFORMATION FOR DETAILS.
 2. DO NOT SCALE DRAWING. USE FIGURED DIMENSIONS ONLY.
 3. ALL DIMENSIONS ARE IN MILLIMETERS.
 4. ANY DISCREPANCIES FOUND BETWEEN ARCHITECTURAL DRAWINGS & SPECIFICATION AND/OR ANY OTHER CONSULTANTS DRAWINGS & SPECIFICATIONS ARE TO BE REPORTED TO THE ARCHITECT AND RELEVANT CONSULTANT FOR CLARIFICATION AND APPROVAL.

- CEILING FINISHES NOTES**
1. DRAWING TO BE READ IN CONJUNCTION WITH PREVIOUS PACKAGE OF WORKS. 2000 SERIES CEILING FINISHES & SPECIFICATIONS.
 2. ANY DISCREPANCIES OR ISSUES TO BE REPORTED TO THE ARCHITECT PRIOR TO THE APPLICATION OF PROPOSED FINISHES.
 3. AREAS WITHOUT HATCH OR COLOUR ARE EXPOSED TO UNDERSIDE OF SOFFIT. PAINT FINISH HAS BEEN INCORPORATED INTO PREVIOUS PHASE OF WORKS.
 4. CEILING ALONGS EXTERNAL PERIMETER WALL REQUIRE A BULKHEAD TO AVOID CLASH WITH EXISTING WINDOWS AND CEILINGS. REFER TO HATCH LEGEND TO SYMBOL & COLOUR ASSOCIATED TO BULKHEAD.
 5. ALL CEILING ARE TO BE +2700mm FROM LABORATORY FINISHED FLOOR LEVEL.



- CT-A** SUSPENDED CEILING SYSTEM TO CEILING, BULKHEADS AND MARGINS. PLASTERBOARD IN FULLY SEALED AND DECORATED WITH ONE MIST COAT AND TWO FULL COATS EMULSION PAINT FINISH. COLOUR: WHITE, RAL 9010
- CT-D** SUSPENDED CEILING SYSTEM WITH PERFORATED METAL TILE. SAS 120 SYSTEM WITH 600 X 1200MM GRID. SAS SPRING TIE SUSPENSION. POLYESTER POWDER-COATING ANTI-BACTERIAL FINISH. COLOUR: WHITE, RAL 9010. PERFORATIONS: S2516, SQUARE PATTERN - 2.5MM DIAMETER, 16% OPEN AREA.
- CT-F** SUSPENDED CEILING SYSTEM WITH PERFORATED METAL TILE. SAS 130 SYSTEM WITH 600 X 600MM ALIGNED-P CLEANSEAL GRID. SAS SPRING TIE SUSPENSION. POLYESTER POWDER-COATING ANTI-BACTERIAL FINISH. COLOUR: WHITE, RAL 9010. PERFORATIONS: S2516, SQUARE PATTERN - 2.5MM DIAMETER, 16% OPEN AREA.



101	Stage 3 Tender Issue	22/01/2024	DL	ML
Rev:	Description	Date	Dwg	CHK

Client: Oxford Victoria House Ltd.		Corstorphine & Wright	
Project: Victoria House - Phase 4		London Studio 21-27 Lamb's Conduit Street, Holborn, London, WC1N 3NL 020 7464 0020 corstorphine-wright.com	
Drawing Title: Layout - Ceiling Finishes - Fifth Floor	Drawing No: 21593-CWA-P4-05-DR-A-2609	Status: S2	Revision: T01
Submittal: TENDER	Drawn: DL	Checked: ML	Paper Size: A0
	Scale: 1:100	Date: 29/11/2023	