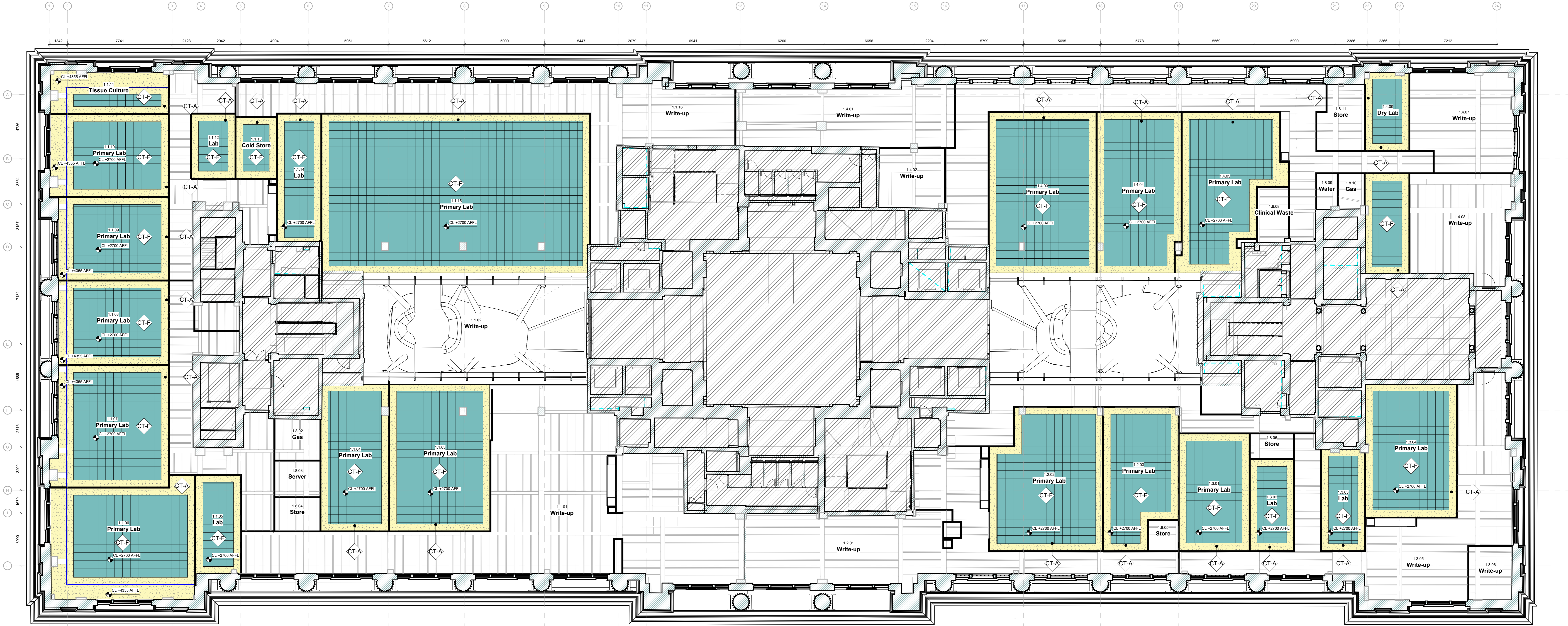


GENERAL NOTES

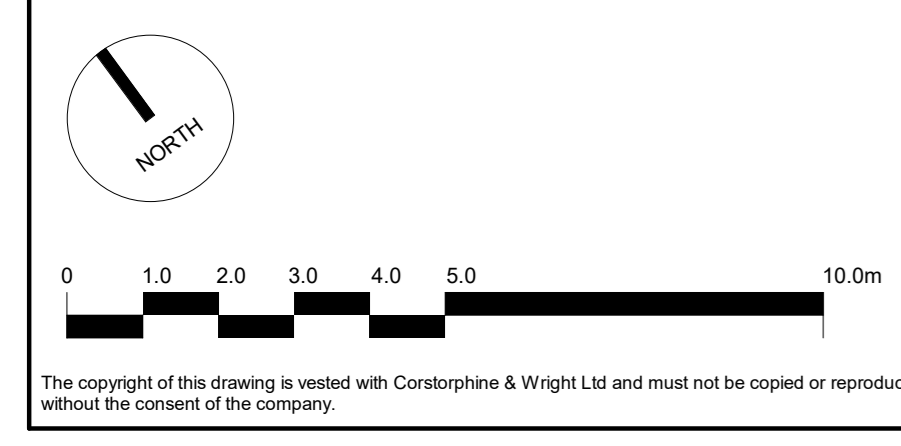
1. ALL SERVICES SHOWN ON THIS DRAWING ARE INCLUDED FOR SCALE. SPATIAL CONTEXT & COORDINATION ONLY. PLEASE REFER TO INDIVIDUAL CONSULTANTS INFORMATION FOR DETAILS.
2. DO NOT SCALE DRAWING. USE FIGURED DIMENSIONS ONLY.
3. ALL DIMENSIONS ARE IN MILLIMETERS.
4. ANY DISCREPANCIES FOUND BETWEEN ARCHITECTURAL DRAWINGS & SPECIFICATION AND/OR ANY OTHER CONSULTANTS DRAWINGS & SPECIFICATIONS ARE TO BE REPORTED TO THE ARCHITECT AND RELEVANT CONSULTANT FOR CLARIFICATION AND APPROVAL.

CEILING FINISHES NOTES

1. DRAWING TO BE READ IN CONJUNCTION WITH PREVIOUS PACKAGE OF WORKS. 200 SERIES CEILING FINISHES & SPECIFICATIONS.
2. ANY DISCREPANCIES OR ISSUES TO BE REPORTED TO THE ARCHITECT PRIOR TO THE APPLICATION OF PROPOSED FINISHES.
3. AREAS WITHOUT HATCH OR COLOUR ARE EXPOSED TO UNDERSIDE OF SOFFIT. PAINT FINISH HAS BEEN INCORPORATED INTO PREVIOUS PHASE OF WORKS.
4. CEILING ALONG EXTERNAL PERIMETER WALL REQUIRE A BULKHEAD TO AVOID CLASH WITH EXISTING WINDOWS AND CEILING. REFER TO HATCH LEGEND TO SYMBOL & COLOUR ASSOCIATED TO BULKHEAD.
5. ALL CEILING ARE TO BE +2700mm FROM LABORATORY FINISHED FLOOR LEVEL.



	OUT OF SCOPE		CT-A		BULKHEAD	CT-A	SUSPENDED CEILING SYSTEM TO CEILING, BULKHEADS AND MARGINS. PLASTERBOARD IN FULLY SEALED AND DECORATED WITH ONE MIST COAT AND TWO FULL COATS EMULSION PAINT FINISH. COLOUR WHITE, RAL 9010
	PROPOSED SLOPES / RAMPS		CT-D			CT-D	SUSPENDED CEILING SYSTEM WITH PERFORATED METAL TILE. SAS 120 SYSTEM WITH 600 X 1200MM GRID. SAS SPRING TIE SUSPENSION. POLYESTER POWDER-COATING ANTI-BACTERIAL FINISH. COLOUR WHITE, RAL 9010. PERFORATIONS: S2516, SQUARE PATTERN - 2.5MM DIAMETER, 16% OPEN AREA.
	EXISTING SLOPES / RAMPS		CT-F			CT-F	SUSPENDED CEILING SYSTEM WITH PERFORATED METAL TILE. SAS 150 SYSTEM WITH 600 X 600MM ALIGNED-P CLEANSEAL GRID. SAS SPRING TIE SUSPENSION. POLYESTER POWDER-COATING ANTI-BACTERIAL FINISH. COLOUR WHITE, RAL 9010. PERFORATIONS: S2516, SQUARE PATTERN - 2.5MM DIAMETER, 16% OPEN A.
	SIGNAGE						



T01 Stage 3 Tender Issue
 22/01/2024 DL ML
 Date Drawn/Checked

Client: Oxford Victoria House Ltd.		Corstorphine & Wright	
Project: Victoria House - Phase 4		London Studio 21-27 Lamb's Conduit Street, Holborn, London, WC1N 3NL 020 7464 0020 corstorphine-wright.com	
Drawing Title: Layout - Ceiling Finishes - First Floor	Drawing No: 21593-CWA-P4-01-DR-A-2607	Scale: S2	Revision: T01
Submittal: TENDER	Drawn: DL	Checked: ML	Paper Size: A0
	Scale: 1:100	Date: 29/11/2023	