

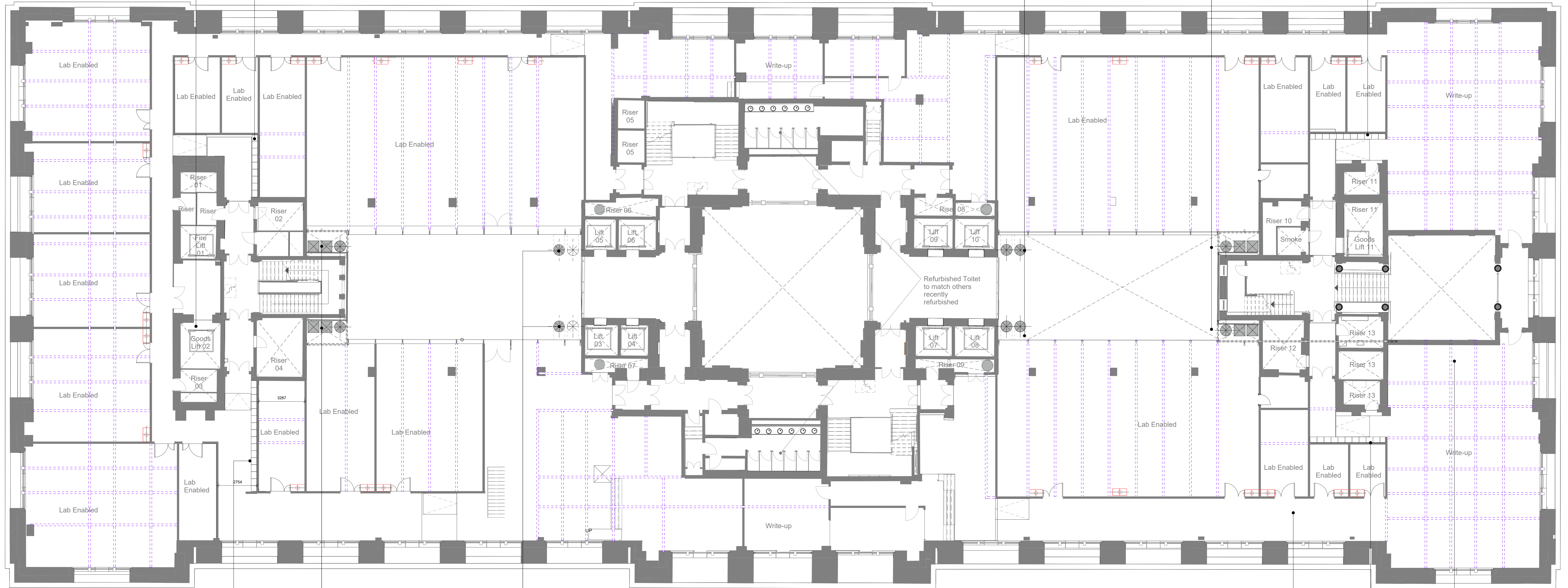
Lift threshold & lift door to be lowered +/- 120mm down to slab level & plasterboard opening to be made good.

Proposed recess for lockers

Proposed exposed ductwork double skin decorative ducts serving ceiling services voids on levels 1 - 7. Atrium glazing to be removed in local surrounding ducts and replaced with glazing accomodating service penetrations at high level.

Proposed Atrium ductwork concealed with plasterboard enclosure. Glazing removed and small area of slab installed as part of 2002 works removed.

Proposed recess for lockers



Proposed recess for lockers

Proposed Atrium ductwork concealed with plasterboard enclosure. Glazing removed and small area of slab installed as part of 2002 works removed.

Proposed exposed ductwork at high level. double skin decorative ducts serving ceiling services voids on levels 1 - 7. Atrium glazing to be removed in local surrounding ducts and replaced with glazing accomodating service penetrations at high level.

Proposed recess for lockers

Removal of Raised Access Floors in Lab Enabled Areas

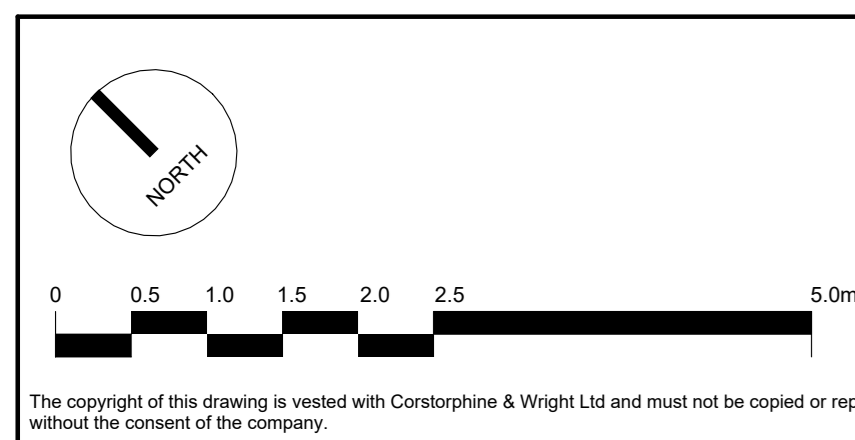
Removal / Retainment of Raised Access Floors in Write-up spaces dependent on local condition.

1 First Floor - Proposed

1:100

- Proposed Partition Locations
- - - Proposed flexible partition locations. (Minimum laboratory width = 3 meters)
- - - Drainage Positions - Proposed drainage penetrations in slab
- - - Ramps - Proposed 'illustrative' location of transition in level from slab to raised access floor. Location dependent on final tenant fit out.

Note
For all items being removed, please refer to demolition drawings 21593-0340 - 0356
Existing services in modernised areas to be altered, refer to services consultant drawings and reports for details.



P-01 PLANNING REVISED
FOR PLANNING

28/09/2022 T1 RS
01/07/2022 RS ATJ
Date Drawn/Checked

Client: Oxford Victoria House Ltd.

Project: 21593 - Victoria House

Drawing Title: Proposed - First Floor Plan

Drawing Status: PLANNING

Corstorphine & Wright

London Studio
One Motspur Street, London, W1T 3JA
020 7463 0200

corstorphine-wright.com

Drawing No: 21593-CWA-VH-01-DR-A-0327

Drawn: ATJ
Checked: RS
Paper Size: A0
Scale: 1:100

Date: 01/07/2022

Revision P-01