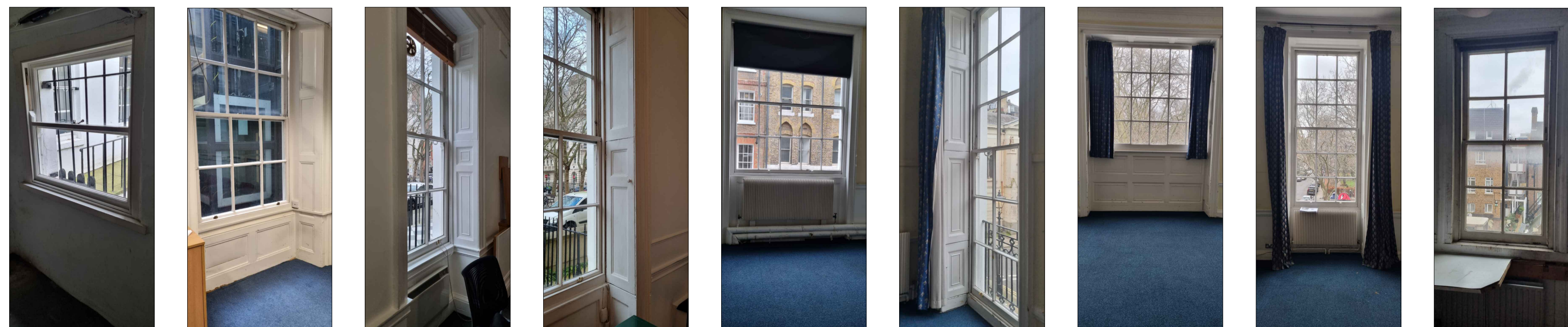
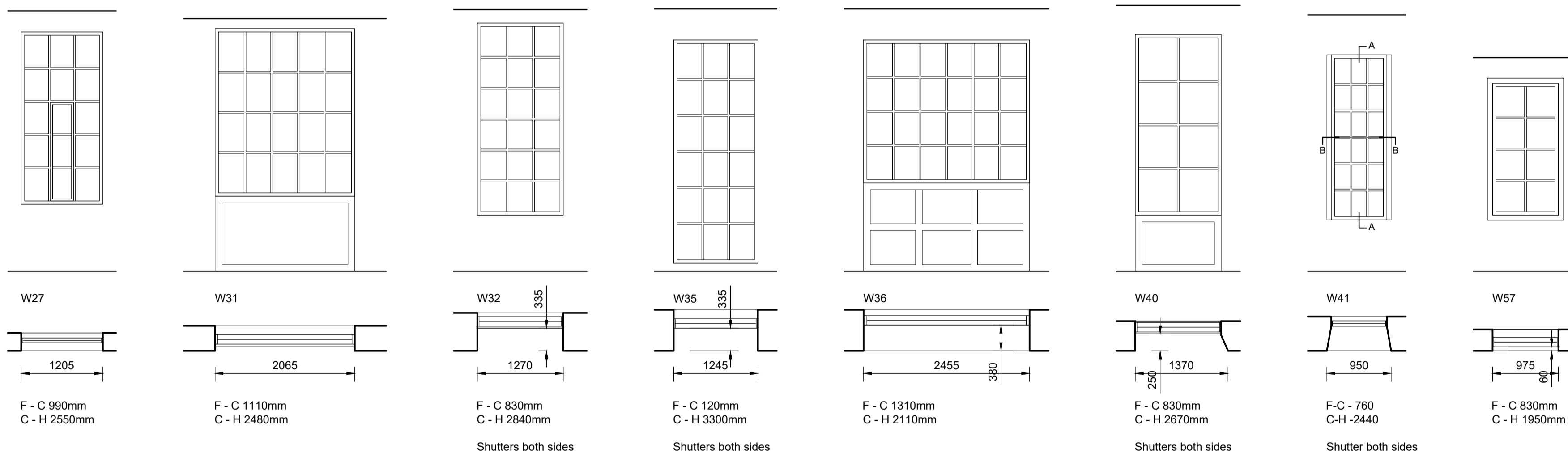
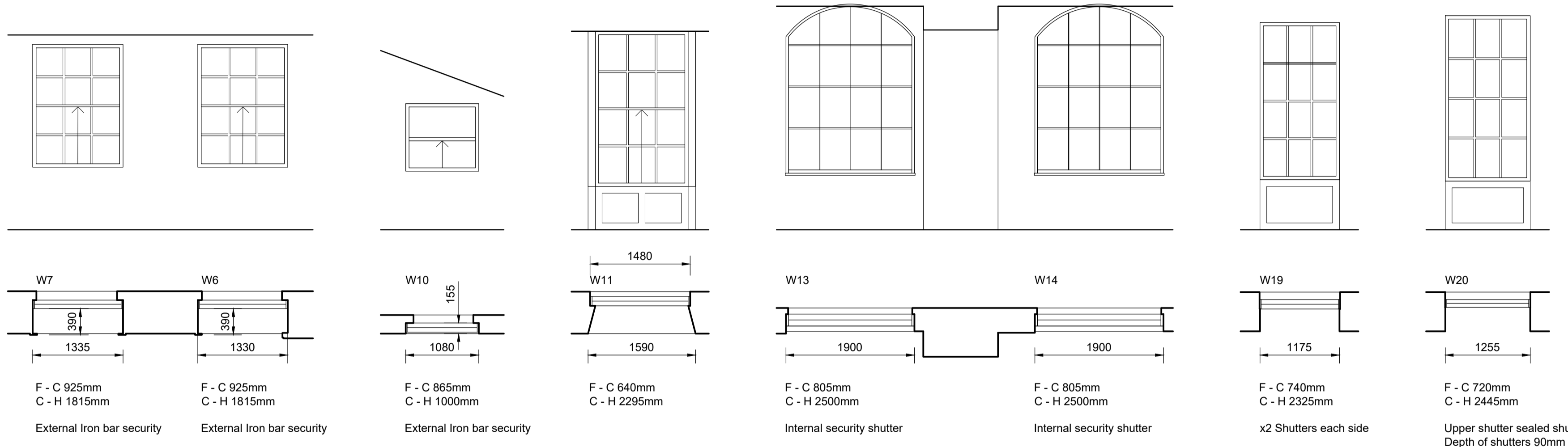
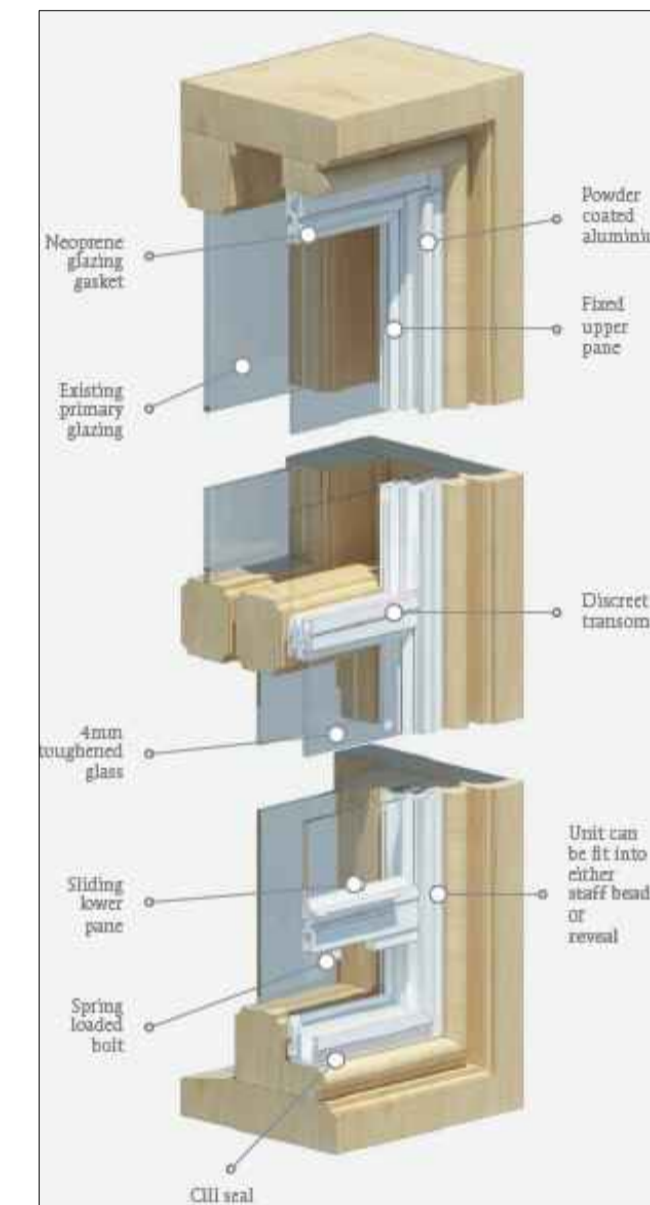


Detail A

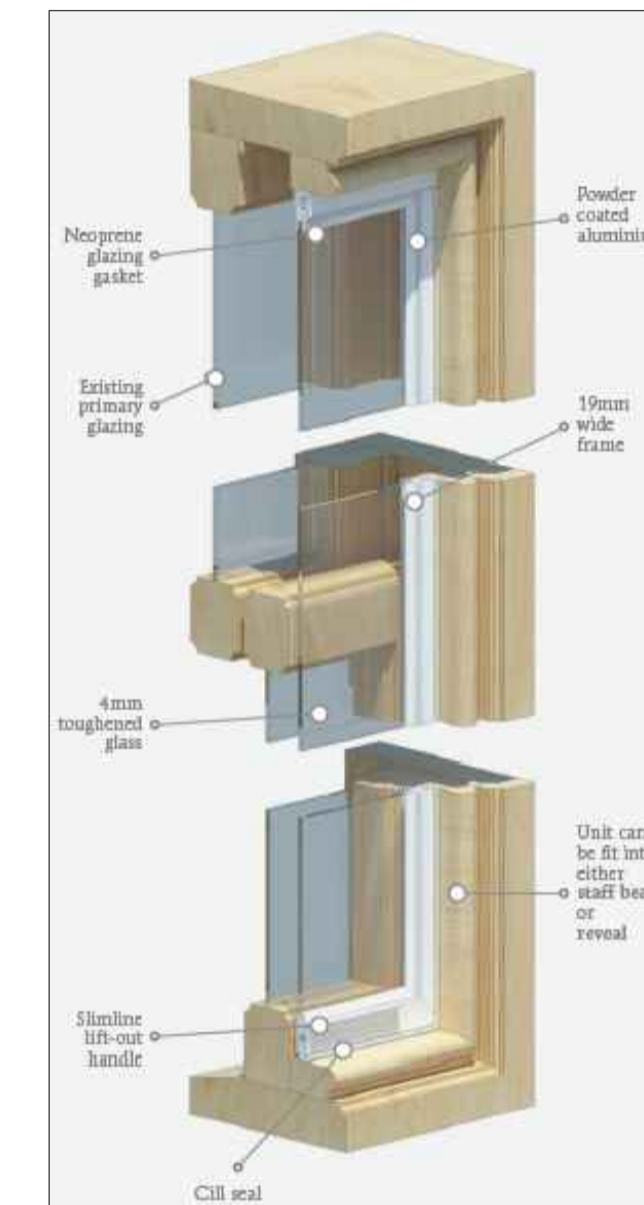


W10 W11 W19 W20 W31 W35 W36 W37 W57



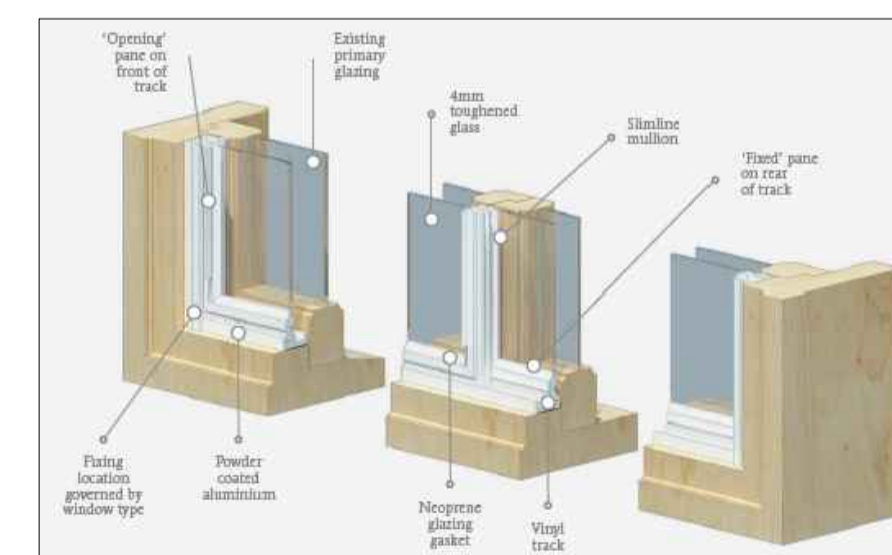
Lower Vertical Sliding Sash Unit

Toughened glass to BS EN 12150 as standard  
 Aluminium - 6063T6 alloy to BS EN 755  
 Neoprene gasket and cill seal to BS738b



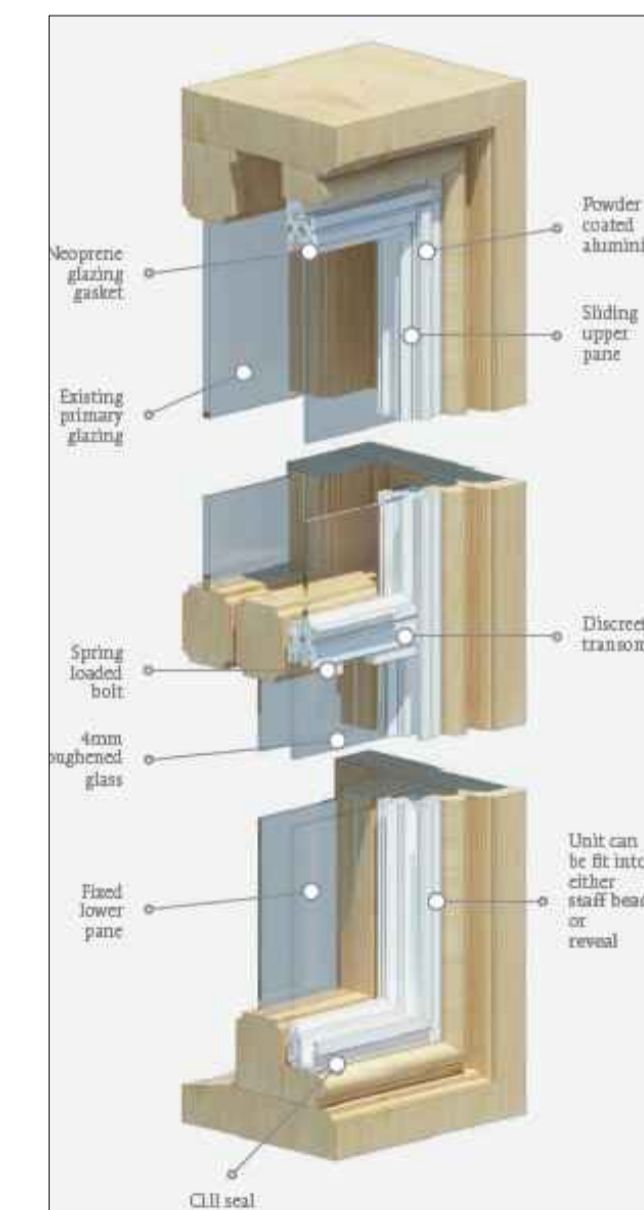
Slimline Unit

Toughened glass to BS EN 12150 as standard  
 Aluminium - 6063T6 alloy to BS EN 755  
 Neoprene gasket and cill seal to BS738b



Horizontal Sliding Unit

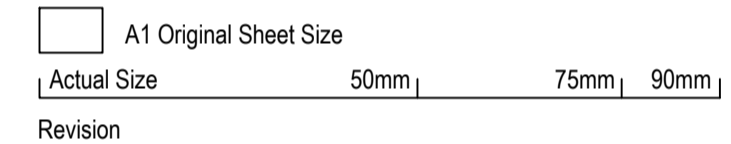
Toughened glass to BS EN 12150 as standard  
 Aluminium - 6063T6 alloy to BS EN 755  
 Neoprene gasket and cill seal to BS738b



Upper Vertical Sliding Sash Unit

Toughened glass to BS EN 12150 as standard  
 Aluminium - 6063T6 alloy to BS EN 755  
 Neoprene gasket and cill seal to BS738b

Thermal efficiency  
 Secondary glazing units to be glazed with 4mm toughened safety glass, to be powder coated in standard White (RAL9910 Satin)  
 A further option of 4mm toughened 'K' glass can be used, which would better the U-Values.  
 Existing single glazing: 5.5 W/m<sup>2</sup>K  
 Single glazing with secondary glazing - 4mm toughened safety glass: 2.3 W/m<sup>2</sup>K achieved  
 Single glazing with secondary glazing - 4mm 'K' Glass (low emissivity): 1.6 W/m<sup>2</sup>K  
 Glazing can have specialist shape window



Job  
**Proposed GK and Consultant suite**  
 Client  
**Amethyst**  
 Drawing  
**Existing Window Details**  
 Scale/Date/Drawn/Chk.  
**1:5 / 02'24 / KR**



1 Boyd Street  
 Shieldfield  
 Newcastle upon Tyne  
 NE2 1AP  
 Tel +44 (0) 191 260-2450  
 Fax +44 (0) 191 261-7301  
 E-mail admin@csmarshitects.co.uk  
 Web Site www.csmarchitects.co.uk

**4952**  
 404