

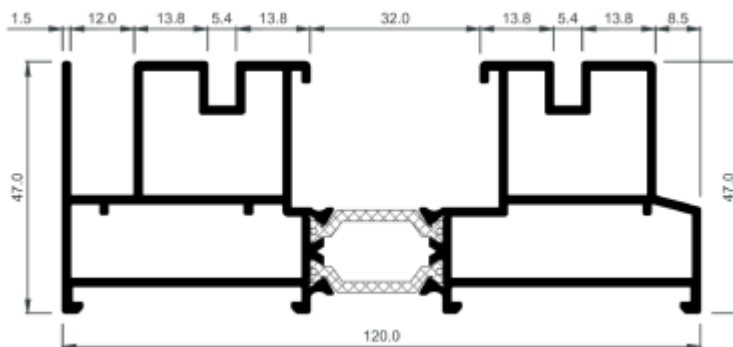
# The Ultimate

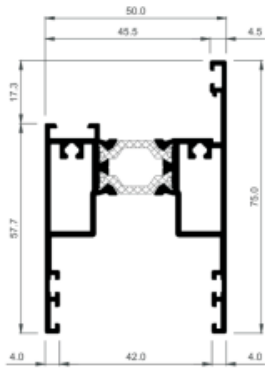
## EvoSlide ALUMINIUM PATIO DOORS

### TECHNICAL SPECIFICATIONS

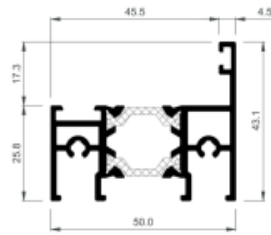


- Slim interlock profile of 47mm
- Stainless steel rails that allow for ultra smooth sliding
- Sash heights from 1500mm - 3000mm
- Sash width from 600mm - 2500mm
- Fully assembled from the ground up
- White, Grey and Black standard colours
- Sliding of 2, 3, 4 & 6 sash configurations
- Maximum weight/sash of 280Kg
- 2500+ RAL colour options, single or dual
- Internally glazed accomodating 28mm (double glazed) or 34mm (triple glazed) IGUs
- Optional PAS24 compliant for 2 pane configurations
- Air permeability (EN 12207): Class 3\*
- Water tightness (EN 12208): Class 7A\*
- Wind resistance (EN 12210): Class C5\*
- Regimental Quality Control - every EvoSlide is tested, filmed and fully packaged

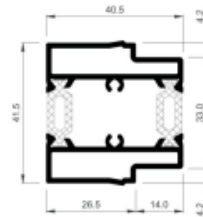




Perimeter sash



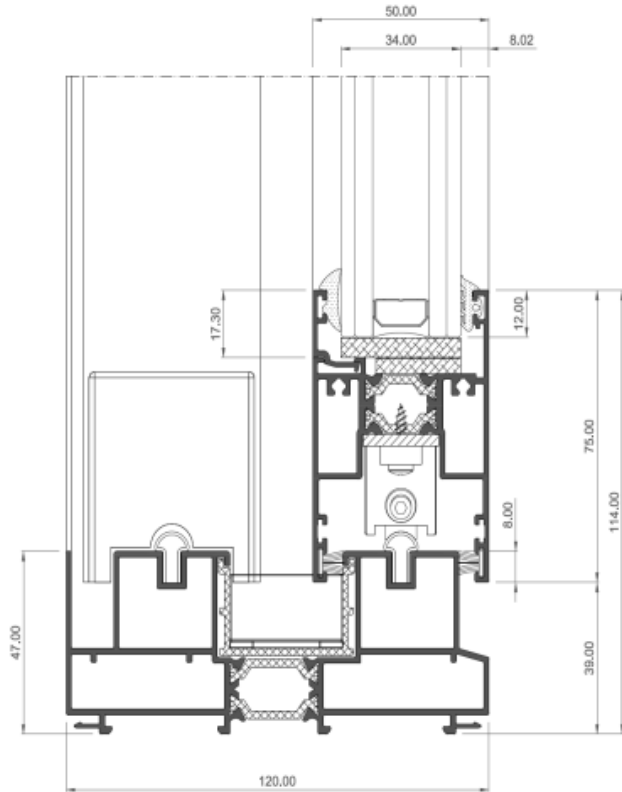
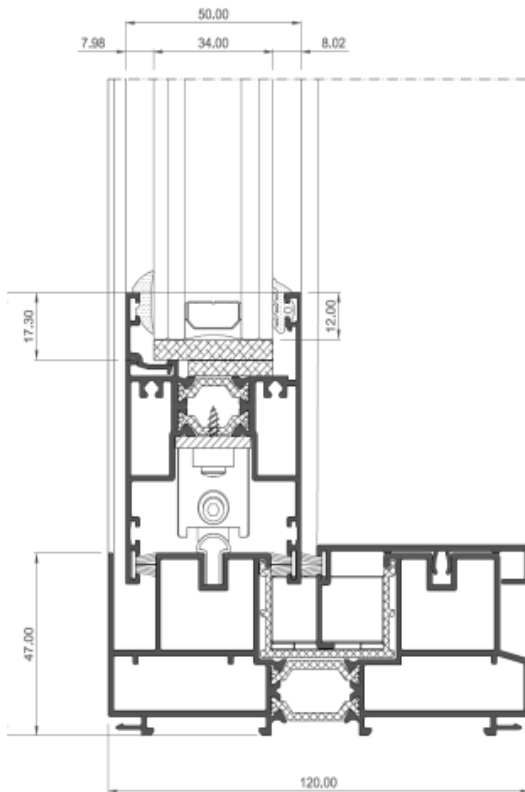
Central sash



Sash joint profile



Intersection cover



Double track